

Connecticut College

## Digital Commons @ Connecticut College

---

1956-1957

Student Newspapers

---

3-7-1957

### Connecticut College News Vol. 42 No. 14

Connecticut College

Follow this and additional works at: [https://digitalcommons.conncoll.edu/ccnews\\_1956\\_1957](https://digitalcommons.conncoll.edu/ccnews_1956_1957)

---

#### Recommended Citation

Connecticut College, "Connecticut College News Vol. 42 No. 14" (1957). 1956-1957. 8.  
[https://digitalcommons.conncoll.edu/ccnews\\_1956\\_1957/8](https://digitalcommons.conncoll.edu/ccnews_1956_1957/8)

This Newspaper is brought to you for free and open access by the Student Newspapers at Digital Commons @ Connecticut College. It has been accepted for inclusion in 1956-1957 by an authorized administrator of Digital Commons @ Connecticut College. For more information, please contact [bpancier@conncoll.edu](mailto:bpancier@conncoll.edu).  
The views expressed in this paper are solely those of the author.



# CONNECTICUT COLLEGE NEWS



86  
Vol. 42—No. 14

New London, Connecticut, Thursday, March 7, 1957

10c per copy

## Six Conn. Seniors Recently Elected To Phi Beta Kappa

Dean E. Alverna Burdick announced in assembly last Monday the election of six members to Phi Beta Kappa, on the basis of three and a half years' work. The six girls are: Linda Cunningham, Carol Dana, Elizabeth Horigan, June Ippolito, Sandra Jellinghaus, and Irene Pantages. The Winthrop Scholars, Lucie Hobitzelle and Joan Faraci Jones, were elected to Phi Beta Kappa last fall on the basis of three years' work.

Three of the girls, Linda Cunningham, June Ippolito, and Sandra Jellinghaus live in Emily Abbey, the co-operative house. Linda, who is the president of Emily Abbey is a religion major. While at Connecticut she has been active in IRC and Political Forum. Linda was an adviser to the freshman for Religious Fellowship.

June, a zoology major looks forward to teaching biology in a secondary school. Last year her campus activities included membership in the Conn Chords and in Science Club. She has been AA's News representative, and last year she was a member of the Laurel Chain.

Sandy has been active athletically. She has played on her class hockey, basketball, and tennis teams, and has been treasurer of AA for two years. She was Business Manager of the "C" Book and is a member of the choir. A chemistry major, Sandy is the president of Science Club. Next year she will go to the University of Pennsylvania for graduate study.

Elizabeth Horigan is majoring in Spanish. A resident of Jane Adams, she is an active member of the Spanish Club, vice president of IRC and president of the Student Library Committee.

Carol Dana and Irene Pantages are both residents of Mary Harkness. Carol is majoring in history. She was prop chairman of the Junior Show and publicity chairman of Soph Hop. On campus she works for the admissions office.

See "Phi Beta Kappa"—Page 3

## Prize Package Of Four Movies Comes Saturday

Prize Package, consisting of four films, will be shown as this week's campus movie on Saturday, March 9, in Palmer Auditorium at 7:30 p.m.

The four individual shorts included in Prize Package are The Stranger Left No Card, A Prince for Cynthia, The Gentleman in Room Six, and Martin and Gaston. Although the producer George K. Arthur, a one time Hollywood comedian and a present magazine publisher, does movie making as a hobby, these are all professional works done by prize winners of the Edinburgh, Venice, and Cannes Film Festivals. The first three stories were written by Sydney Carroll, one of the most brilliant young American short story writers.

The Stranger Left No Card is a comedy of murder, starring Alan Badel. Badel arrives at Windsor, England, as a stranger in a weird costume, causing quite a stir in this small town. He becomes acclaimed as the town buffoon, but soon leaves unnoticed and unrecognized, after having revealed himself to a town official.

A Prince for Cynthia starring Paul Rodgers and Elizabeth Hensen, is both bitter and sweet, humorous and sentimental. Everyone knows the heroine, for she is just like many other lonely young women who tend to day dream. Her common everyday emotions almost convince the viewer that her latest romance is not a dream.

The Gentleman in Room Six starring Hans Twardosky, Daniel Ocko, and Norma Winters, is a mock piece with a surprise ending. The story is in the first person, in which not only the mental viewpoint but the visual as well, never wavers from the narrator, until the climax. The clever camera work conveys the actor as the camera's eyes, so that the audience does not see the man until the final scene.

Martin and Gaston is a tale of See "Campus Movie"—Page 3

## Africa in the Modern World To be Theme of Ninth Annual United Nations Conference



Gwendolen M. Carter, chairman of the Government Department at Smith College, is the principle speaker at UN Weekend. Profiles of the other speakers appear on page six.

## Miss Gwendolen M. Carter to Present Keynote Address at UN Conference

Miss Gwendolen M. Carter, Professor and Chairman of the department of Government at Smith College, has taught at Smith since 1943. She received her B.A. from the University of Toronto, her M.S. from Oxford University, and her Ph.D. from Radcliffe.

She has taught at McMaster University in Ontario, at Wellesley and Tufts Colleges, and has been connected with the Radcliffe-Harvard Bureau of International Research. She will give a series of lectures on "Africa—South of the

Sahara" in the adult lecture series represented by Hartford Junior College during the fall of 1954.

In September, 1953, Miss Carter returned from a year's leave of absence spent on field research in South Africa, and Southern Rhodesia where she studied the party systems and their relation to racial problems, under grants from the Rockefeller Foundation and the Social Science Research Council. On her way back from South Africa, Miss Carter visited both the Belgian Congo and the Gold Coast to study their distinctive situations.

On an earlier trip undertaken during her sabbatical leave in 1948-49, and sponsored by several foundations, Miss Carter visited East, Central and South Africa as part of a world tour of the nations of the British Commonwealth relations after World War II.

At present she is engaged in writing a book on South Africa based on material gathered in 1948-49 and 1952-53, and has a research grant from the Rockefeller Foundation this year toward its publication.

She is the author of "The British Commonwealth and International Security" published in 1947, and of numerous articles and Foreign Policy Reports on the British Commonwealth and its constituent members. She collaborated with the late John C. Panney, former associate professor of government at Smith, and subsequently with John Herz of Howard University, on "The Major Foreign Powers," first published in 1949, revised in 1952, and currently used as a text book in 187 universities and colleges in the United States. She is also the author of articles on the Gold Coast in Encyclopaedia Americana.

She is a member of Phi Beta See "Carter"—Page 4

## Discussion to Begin Friday at 8:00 p.m.; Panels on Saturday

The Ninth Annual International Relations Conference will be held this weekend, March 8-9, at Connecticut College. The Conference, sponsored by the International Relations Club, with the aid of Miss Holborn, the club's adviser, has become an event of interest to colleges in the New England area as well as to the citizens of New London and vicinity.

The conference this year is being held in conjunction with the Foreign Policy Association of Connecticut. Fifty-six delegates, including a number of foreign students, will represent the following colleges and universities: Connecticut College, Danbury Teachers College, Hartford College, Hillyer, Northeastern University, Smith, Teacher's College of Connecticut, Trinity, the University of Connecticut, and Wesleyan University.

Africa in the Modern World is the theme of the 1957 conference. An opening public meeting will be held on Friday, March 8, at 8 p.m. in Palmer Auditorium. Africa at the Crossroads will be discussed by Miss Gwendolen M. Carter, Chairman of the Government Department at Smith College, Mr. L. Gray Cowan, of the School of International Studies at Columbia, and Mr. Carl G. Rosberg, Jr., of the Boston University African Institute.

On Saturday morning three panels, each followed by a round table discussion, will be held simultaneously. In Hale Laboratory Mr. Rosberg will moderate a discussion on the Major Consequences of British Policy in East Africa; in the Palmer Room of the Library Mr. Cowan will lead a discussion on the Major Consequences of British and French Policy in West Africa; while in WMI Mr. Erroll E. Harris, visiting Professor of Philosophy from South Africa, will conduct a discussion of Race and Politics in the Union of South Africa. The students working with these panels will be from Smith, Wesleyan, Trinity, and the University of Connecticut. Melinda Brown '59, South African panel and Sarah Greene '57, West African panel, will represent Connecticut College. Other students from Connecticut will contribute to the weekend by forming study groups on the various sections of Africa instead of specifically serving as members of the panels.

On Saturday afternoon, there will be a plenary meeting in WMI conducted by Miss Carter. At this session reports on the morning discussions will be presented by three student reporters. Following a coffee break the four authorities will participate in a final panel discussion on Africa and the United States. The Conference will officially end with a dinner in Smith-East.

Visiting delegates will be directed to the weekend meetings by these students: Mary Morse '59, Jean Tierney '58, M. J. Driggs See "UN Conference"—Page 3

## Faculty Rate Compets

by Glen L. Kolb  
Department of Spanish

The annual dramatic events known as Competitive Plays were brought to a brilliant conclusion on Friday evening, March 1, with very laudable performances by the classes of 1957 and 1960.

The seniors, skillfully directed by Elaine Manasevit, presented Act II of Giraudoux's The Madwoman of Chaillet, a work so difficult and demanding in the subtleties of interpretation that it is a challenge to even the most experienced professionals. Martha Kelly, playing the leading role as the Countess Aurelia, was a most convincing madwoman, and capably set the tone of Giraudoux's sparkling comic satire. Elizabeth Peer, playing the part of Mme. Constance, must have been very close to the author's conception of the spoiled and eccentric little widow who, indulging in dreams of youthful romance, was much more interested in bothering her friends about the alleged presence or absence of her non-existent pet dog than in helping the Countess to solve the world's problems. The beautiful but frustrated Mlle. Gabrielle was inter-



Elaine Manasevit '57, two time winning director of Compet Plays, is shown holding the coveted cup. Seated around her are several members of the cast. From left to right are Judy Pearce, Joan Schwartz, Barkie Billings and Donna MacKenzie.

preted by Barbara Billings, who knew how to be suitably modest and innocent while revealing her own particular mania; and Joan Swartz was more than competent as the somber and legalistic Mme. Josephine. Special plaudits must go to Judith Pearce for her fine portrayal of the Ragpicker, a heavy role, and a particularly difficult one. See "Kolb Review"—Page 3

by Jean M. Leblon  
Department of French

The double bill at Palmer Auditorium Friday night, February 22, consisted of one-act plays by two contemporary writers. The time of their creation, our time, is undoubtedly the only rapport, tenuous as it may be, that these two plays ever suggested in the course of the evening. In fact we might well agree that a near perfect dissonant note was struck when the Junior and Sophomore Classes came to stage Tennessee Williams and Ann Frankel, respectively.

By choosing Williams' This Property Is Condemned to represent them in the competition, the members of the Junior Class gave their fellow director, Mary Ann Handley, a very arduous task to manage. Nevertheless, Miss Handley proved that she could cope with most of the exigencies of her job. The entrance and exit of Willie, played by Suzanne Kent, on the rail also used by the Cannonball Express and her engineers, were clever and apropos. Unfortunately Willie's aimless pacing lacked imagination and See "Leblon Review"—Page 4



## Reflect, Then Elect

At Connecticut College, certain social and academic limitations are placed upon the students by the faculty and administration. To deny the existence of these limits would be ridiculous; to deny their necessity, questionable. But the fact remains that we do have a Student Government—and a very active and healthy one at that. Student Government is one phrase that means exactly what it says; that is, it is government organized and directed by the students. Its main purpose, that of legislation, is best carried out with the help of a group considerably smaller than that of the entire student body. Because such a group is not unwieldy in size, it can fill the necessary position of liaison officer between the administration and the students.

The role of liaison officer in our particular student government is played by Cabinet. This group considers suggestions originating from members of the student body and determines what could and what should be done. If a suggestion lies beyond the present boundaries of acceptable action, Cabinet is in a position to request changes in these boundaries or to supply alternative measures which do lie within its sphere of possible action. For these reasons, Cabinet is a very important part of Student Government. Next Wednesday, Connecticut College will hold general elections that will determine the holders of eight of the fourteen Cabinet positions for the coming academic year. In deciding for whom you will vote, we recommend that you consider the candidates in light of their being your representatives on Cabinet as well as in light of their capabilities in carrying out the other duties of their offices.—BKS

## Student Discusses Avakian's Recital Played at Holmes

by Anne Detarando '57

Leopold Avakian, who is in his early twenties, played in Holmes Hall last Monday afternoon, the complete recital that he will present when he makes his Carnegie Hall debut on Friday, March 8. The young artist was born in Persia (Iran). He has studied at the Juilliard School of Music for some time and has performed throughout the United States and the Middle East.

Of his performance on the whole, my opinion is not entirely complimentary. The violinist's tone in the upper register was full and brilliant and highly commendable; therefore, he was most at home and sounded best playing pieces which displayed this beautiful tone such as Spanish Dance by DeFalla, Domanza Andaluza by Saratate, and Scherzo-Tarantelle by Wieniawski. However, Avakian's tones in the lower register were weak, and his technique was not always smooth. As far as musicianship goes, his performance, to me, lacked at times the depth of interpretation which stamps an unusually fine musician. Although he achieved some effective moments via a big and fiery tone, the poetic spots were not poetic, as for example in the encore, La Fille aux Cheveux de Lin by Debussy (a piece written for piano which should be played on the piano).

The rest of the program included—  
See "Avakian"—Page 4

## Chapel

**Friday, March 8**  
Hymn Sing: Susan Rike '59

**Sunday, March 10**  
The Rev. Thomas Stack, St. Patrick's Church, East Hampton, Connecticut.

**Tuesday, March 12**  
Louise Schine '60

**Wednesday, March 13**  
Marna Leerburger '59

**Thursday, March 14**  
Suzanne Heneage '58

## Radio

This week's College Radio Programs are as follows:  
**Thursday, March 7**—Disc Jockey program.  
**Monday, March 11**—Jazz music.  
**Tuesday, March 12**—Broadway Show Tunes.  
**Wednesday, March 13**—Notes and Quotes.

The College Student Hour this week will present True Talley '58 and Barbara Paust '60 in a discussion of Louise Hall Tharp's The Peabody Sisters of Salem. Since the book has been the subject of a History paper by True and a talk in Speech class by Barbara, their joint discussion should prove most interesting and informative.

## Movie Calendar

**CAPITOL**  
**Wednesday, March 6**—**Saturday, March 9:** Oh Men, Oh Women with Dan Dailey and Ginger Rogers and Scandal Inc. with Robert Hutton and Patricia Wright.  
**Sunday, March 10**—**Tuesday, March 12:** Voodoo Women with Marla English and Tom Conway, and The Undead with Allison Hayes and Richard Garland.

**GARDE**  
**Wednesday, March 6**—**Saturday, March 9:** The Big Land with Alan Ladd and Virginia Mayo and Dance with Me Henry with Abbott and Costello.  
**Sunday, March 10**—**Tuesday, March 12:** The Iron Petticoat with Bob Hope and Katharine Hepburn and Mutiny on the Bounty with Charles Laughton and Clark Gable.

## FREE SPEECH

A Forum of Opinion From On and Off Campus  
The opinions expressed in this column do not necessarily reflect those of the editors.

Dear Editor,  
Three cheers for Ann Frankel and Jane Till who put into writing what so many of us have been talking about. They are right in saying that we students would be faced with a serious time limit next year with the new proposed work program. Many of us have no time to spare now and extra limitations would be fatal. As a student body we deserve credit for being willing to take on both extra work and financial burdens. We do not ask for credit, however, only consideration. Can we ask for only one insignificant concession; a smaller gym schedule consisting of not more than two regular class hours per week, each season?  
We have an excellent physical education department. Let us hope it can be reasonable, and above all, fair!

AJL, CDC and PCH '59

Dear Editor,  
A college woman is presumed a mature individual. As a mature individual it is presupposed that she is capable of working out some sort of time schedule to fit her needs.

At the present time we at Connecticut are asked to contribute but one hour of our week to sitting on bells. At other institutions, of the same caliber as Connecticut, girls are asked not only to sit on bell duty, at night as well as during the day, but to accept complete responsibility for the cleaning of the dorms; this includes the cleaning of the bathrooms, working in the kitchen and waiting on tables as well. These girls seem to be able to blend an academic, work, and social life (and take gym too). No one can deny that every girl on this campus spends many hours a week, an amazing number if you stop to count, playing bridge, knitting, listening to records, or just talking. It would not seem that one or two less hours a week of such activity would incapacitate anyone—in fact an hour or two spent along more domestic lines might be highly beneficial in the long run.

Furthermore, there is a statute on the books in Connecticut that stipulates that every college undergraduate must have three years of gym. It would appear that complaints about Connecticut's gym requirements might be more relevant if they were directed to the state legislature rather than to the college administration.

Balancing a budget of any sort today is a problem. If we can help alleviate this problem by giving but two or three hours, out of the 168 a week, it would appear to me that we are pretty immature and irresponsible if we can't fit it into our schedules! If the time spent complaining were spent in working, the work itself would not even faze us.

Lucia Beadel '58

## Sideline Sneakers



by Linda Hess '59

The frolicking faculty has done it again! In a lively volleyball match between the faculty and the students on Saturday, February 23, our professors proved their might once more as they piled up 36 points to our 30. Mr. Mack was high scorer with 9 points while Mr. Cranz was close behind with 7. Messrs. Birdsall, Christiansen, Leblon, McClay, Niering, and Miss Gorton should all be congratulated for their contribution to their team's success. I think the student team members, Mmes. Czakowski, Usher, Saunders, Shaw, Bove, Flower, Huber, Wrampelmeyer, Myers, and Jomo would join with me in saluting these and other faculty members who give their time and energy to enjoyable events which serve to bring the students and faculty together in a more casual atmosphere than in that found in the classroom. We are much more fortunate than many colleges in this respect . . . In class volleyball competition, the sopho-

mores are leading the field, having beaten both the freshmen and the seniors; "Heaven's Above!" . . . We are extremely fortunate too, in having the opportunity to view the Harvard Hasty Pudding Club's performance of "On the Rocks" on April 4. A lively satire on debonair debutantes, "On the Rocks" will be well worth seeing, especially since the low admission fee of only \$2.00 per person, will bring us closer to turning that rec-hall dream into reality. Buy your tickets early; they are on sale now in all the dorms . . . Conn. College was very well represented last Saturday at the annual playday at Wellesley College. Our basketball team, composed of six girls who had never played together, registered only one defeat and that was only because they had to play the more experienced Wellesley team without any preliminary practice. After this lone defeat and one game's practice, our CC Six rarely let their next opponents, Radcliffe, Holyoke, Pembroke and Wheaton get a point in edgewise as they went on to win second place in the day's events . . . After holding her own on the Wellesley badminton court, against all six colleges, it was reported that Ath Wilbur became a walking advertisement for Connecticut College and Coca-Cola . . . Lorraine Haf-fener has started something new in swimming this year. Monday nights from 7:00 to 8:00 o'clock there will be Water Ballet at the C.G.A. pool . . .

March traditionally roared in like a lion and will undoubtedly roar again before it's over, but Spring is in the air and we will be starting the popular spring sports soon after vacation. Two sprightly young ladies, however, will be several weeks before forgetting the winter sports. Both Lynnies Graves and Hopie Gibson are sporting stylish casts as souvenirs they will undoubtedly be delighted to lose . . . Going back to Spring Sports, we should (?) all have the attitude of a New London Miss who asked a Kaplan's Travel agent about places to go for her Easter vacation. On being asked what sports she liked best, she replied, "winter sports or summer sports . . . I like 'em all as long as they're cute and single!" Right idea, wrong motive!

## The Rev. Mr. Stack To Lecture Sunday Evening at 7:00 p.m.

Because of illness, Bishop Flanagan of Norwich has been compelled to cancel his speaking engagement at Harkness Chapel at Connecticut College on Sunday evening, March 10, at 7 p.m. He has appointed as his substitute the Rev. Thomas Stack, priest in charge at St. Patrick's Church in East Hampton, Conn. Father Stack is a native of Winsted, Conn., prepared for the priesthood at St. Thomas' Seminary, Hartford, and at St. Bernard Seminary in Rochester. After a period of study in the Arcive Scoville in Florence, Italy, he was ordained there in 1932. Returning to this country, he continued post graduate studies at Columbia University, taught English and Italian at St. Thomas' Seminary until 1953, when he was appointed to his present post in East Hampton.

A male choir from St. Mary's (R.C.) Church, under the direction of John J. McCarthy will sing on this occasion. The public is invited to attend.

## CONNECTICUT COLLEGE NEWS

Established 1916

Published by the students of Connecticut College every Thursday throughout the college year from September to June, except during mid-years and vacations.

Entered as second-class matter August 5, 1919, at the Post Office at New London, Connecticut, under the act of March 3, 1879.

REPRESENTED FOR NATIONAL ADVERTISING BY  
**National Advertising Service, Inc.**  
College Publishers Representative  
420 MADISON AVE. NEW YORK, N. Y.  
CHICAGO - BOSTON - LOS ANGELES - SAN FRANCISCO

Member  
**Associated Collegiate Press**  
**Intercollegiate Press**

### EDITORIAL STAFF

**Editor-in-Chief:** Bannie Steger '58  
**Managing Editor:** Mary Anne Lincoln '58  
**Associate Editor:** Vicki deCastro '58  
**News Editor:** Carlene Newberg '59  
**Assistant News Editor:** Joan Wagner '59  
**Feature Editor:** Ann Frankel '59  
**Assistant Feature Editor:** Joella Werlin '59  
**Faculty Adviser:** Robert E. L. Strider  
**Make-up Editors:** Barbara Phillips '58, Lillian Rodgers '59  
**Copy Editors:** Lollie Beadel '58, Pat Criscuolo '58  
**Art Critic:** Katie Lindsay '57  
**Music Critics:** Deborah Cohen '57, Anne Detarando '57  
**Cartoonist:** Liz Peer '57  
**Photographer:** Jane Taylor '59  
**Advertising Managers:** Susan Camp '59, Debbie Tolman '58  
**Business Managers:** Jean Cook '58, Phil Iorio '58  
**Circulation Manager:** Betty Anthony '58  
**Exchange Editor:** Shelley Schildkraut '59  
**Typists:** Clara Carr '58, Kathy Gregory '58  
**Reporters:** Nancy Bald '60, Marlon Fitz-Randolph '60, Sally Glanville '60, Ellie Jones '60, Paula Fae Kimmerling '60, Jean MacCarthy '59, Clara Mack '59, Linda Maluzzo '60, Sue Miller '58, Betty Joan Moss '60, Carol Plans '60, Jan Rusch '58, Judy Solloway '60, Gayle von Plonski '60, Karen Widder '60.

### Interviews in Preview

**Monday, March 11** Aetna Life Insurance Company (Hartford, Conn.)  
Group Contract trainee, Group underwriting trainee, Job and Methods Analyst trainee

**Wednesday, March 13** Connecticut General Life Insurance Company (Hartford)  
Group underwriting trainee

**Thursday, March 14** Harvard (Cambridge)  
Department secretaries, Assistants in courses, Lab workers, Librarians Harvard Medical School (Boston)

**Monday, March 18** Providence Public Library  
Training program in Book Selection, Children's Literature, Library organization, Cataloging, Reference Service

**Wednesday, March 21** Massachusetts Life Insurance Co. (Springfield)  
Training programs for various positions

For further information or an appointment for an interview, stop in at the Personnel Bureau.



**Kolb Review**

(Continued from Page One)

difficult one for a woman to play convincingly.

An excellent supporting cast included Gail Berquist as Irma, the Countess' maid; Donna MacKenzie, who interpreted the role of the Sewer Man; Ann Richardson, as the Peddler; Deborah Cohen, who performed very pleasantly as the Street Singer with music she herself had composed for the play; Jean Gallo, as the Juggler; and Lucie Hoblitzelle, who played the part of the Flower Girl.

The good teamwork of the whole cast, supported by a most competent production staff, resulted in a performance that was smoothly executed from beginning to end. There were no observable lapses of memory, and delayed responses to cues were very few and almost unnoticeable. Altogether, *The Madwoman of Chaillot* must be considered one of the best competitive plays produced by any class in recent years.

The freshmen, under the very capable direction of Edith Chase, presented the one-act play, *Overtones*, by Alice Gerstenberg. Although much shorter and less complex than the work performed by the seniors, this clever little play is even more demanding in certain respects, most notably the necessity of almost mirror-like synchronization of movement on the part of Harriet and her inner self, Hettie, in order to establish, at the very beginning, the identity of their dual personality. These two difficult roles were played, respectively, by Mary Fyffe and Nancy Donahue. Their rival, Margaret, was played by Joan Wertheim, while the latter's inner self, Maggie, was interpreted by Pat Wertheim.

This total cast of four showed very good co-ordination and a sensitive understanding of their parts. The facade of culture and refinement displayed by Mary and Nancy was normal and convincing; and the constant emotional turmoil and conflict of the inner selves portrayed by Joan and Pat were extremely effective. Nor were they lacking in stage presence: when the purse was dropped, it was retrieved so casually and naturally that this slight accident might have been part of the play. Recognition must also be given to Carol Griffenhagen and the freshman stage crew who succeeded so well in the arrangement of duplicate scenery.

Altogether, the performance was an exceedingly creditable one, and although I would take no exception to the decision of the judges in awarding the cup to the seniors, I venture to predict that these very able freshmen will win first honors in some future competitive play.

**UN Conference**

(Continued from Page One)

'58, Joan Wagner '59, Shelley Schildkraut '59, and Connie Wharton '59.

**SOPHOMORES  
YOUR JUNIOR YEAR  
IN NEW YORK?**

See your dean or write for brochure to:

Dean F. H. McCloskey  
Junior Year Program  
Washington Square  
College  
New York University  
New York 3, N. Y.



**Ninth Annual United Nations Weekend  
Calendar of Events Open to the Public**

Friday, March 8, 1957

8:00—Public Meeting — Palmer Auditorium  
AFRICA AT THE CROSSROADS  
Gwendolen M. Carter  
L. Gray Cowan  
Carl G. Rosberg, Jr.

Saturday, March 9, 1957

9:15-11:45—Panels and Roundtables  
MAJOR CONSEQUENCES OF BRITISH  
POLICY IN EAST CENTRAL AFRICA  
Hale Laboratory  
Carl G. Rosberg, Jr.

MAJOR CONSEQUENCES OF BRITISH AND  
FRENCH POLICY IN WEST AFRICA  
Palmer Room, Library

L. Gray Cowan  
Arthur Porter  
Sierra Leone

RACE AND POLITICS IN THE  
UNION OF SOUTH AFRICA  
WMI Auditorium

Errol E. Harris  
Cleopas Kumalo

10:15-10:30—Coffee Break

2:15—Plenary Meeting: Reports of Roundtables  
and Discussions  
WMI Auditorium  
Gwendolen M. Carter

3:30—Coffee Break

4:00—AFRICA AND THE UNITED STATES  
WMI Auditorium

Panel: Gwendolen M. Carter  
L. Gray Cowan  
Errol E. Harris  
Carl E. Rosberg, Jr.

**FIFE & MONDO'S**

Dancing Nitely to the Eddie Turner Trio  
Dining and Dancing  
Waterford, Conn.

**CAMP COUNSELLOR OPENINGS**

— for Faculty, Students and Graduates —

**THE ASSOCIATION OF PRIVATE CAMPS**  
... comprising 250 outstanding Boys, Girls, Brother-Sister and Co-Ed Camps, located throughout the New England, Middle Atlantic States and Canada  
... INVITES YOUR INQUIRIES concerning summer employment as Counsellors, Instructors and Administrators.  
... POSITIONS in children's camps, in all areas of activities, are available.

WRITE OR CALL IN PERSON  
ASSOCIATION OF PRIVATE CAMPS  
DEPT. C

55 West 42nd Street, Room 743 New York 36, N. Y.

**"Collegiate Hospitality"**

YOUR 1957 SUMMER TOUR OF  
**EUROPE**



Have fun in England, Holland, Germany, Austria, Italy, France, Switzerland, Belgium. 59-day co-ed tour for college people only. \$973, complete cost. Escorted by Mr. and Mrs. Jean M. Leblon. Sail on student ship "Grooten Beer" June 19. Ask now for full details!

CULTURAL TRAVEL DIVISION

**THE HOUSE OF TRAVEL**

17 East 49th Street, New York 17 • MU 8-0185

**Piccadilly Restaurant**

Excellent Food

Unique Atmosphere

Serving Breakfast — Lunch — Dinner

**Campus Movie**

(Continued from Page One)

two small, but fearless boys, and their adventures on the high seas and the tropic isles. This story, told through the eyes of a child, has won several awards, including those by Golden Reel, and American Film Association. The animated drawings were made by the children, ages 8, 9, and 10, from the school in Avenue Thierry d'Avray.

These four shorts in Prize Package, all filmed in Europe, have achieved great success throughout the United States.

**Phi Beta Kappa**

(Continued from Page One)

She would like to go to graduate school.

Irene is a Spanish major and 's secretary-treasurer of the Spanish Club. She looks forward to doing graduate study.

The Phi Beta Kappa chapter of Connecticut College sponsors a scholarship awarded to a senior for graduate study. Members and alumnae of the Connecticut chapter and residents of New London who are members of Phi Beta Kappa contribute to the scholarship fund. Nellie Beetham was last year's recipient.

Dear Susie

See you in Bermuda at Tringham's.  
Be sure to sign the Tringham College Register.



Tringham's is Bermuda headquarters for Madras shirts, Bermuda shorts, Ballantyne cashmeres, doekskins, Daks trousers, Liberty scarves, British woolens, polo coats, Jaeger classics, Paris perfumes.

Love,  
Joe

**HERE IS THIS WEEK'S TIE-BREAKER IN  
OLD GOLD'S**

**TANGLE  
SCHOOLS**

PUZZLES



**TIE-BREAKING  
PUZZLE  
NO. 6**

**CLUE:** This coeducational state university is located in the South and was chartered in 1820, opened in 1831. In 1865 most of the university buildings were burned by a body of Federal cavalry.

**CLUE:** Opened in 1889, this is the undergraduate college for women of a large eastern university. It is named for an eminent educator who advocated its establishment.

**CLUE:** This Ohio college was established in 1881 as Educational Branch of YMCA. It acquired its present name in 1929.

ANSWER 1. \_\_\_\_\_  
ANSWER 2. \_\_\_\_\_  
ANSWER 3. \_\_\_\_\_

Name \_\_\_\_\_  
Address \_\_\_\_\_  
City \_\_\_\_\_ State \_\_\_\_\_  
College \_\_\_\_\_

**HOLD UNTIL YOU HAVE COMPLETED ALL EIGHT TIE-BREAKERS**

All contestants who successfully completed the first 24 puzzles in Old Gold's Tangle Schools contest are required to solve eight tie-breakers in order to compete for the first prize of a World Tour For Two, and the 85 other prizes now tied for. Note that the above puzzle contains the names of three schools, for which three separate clues are given.

Puzzled About Cigarette Claims? Try today's Old Golds ... Regulars, King Size or Filters and enjoy terrific taste ... thanks to Old Gold's exclusive blend of nature-ripened tobaccos ... so rich, so light, so golden bright.

**NO OTHER CIGARETTE  
CAN MATCH THE  
TASTE OF TODAY'S**

**OLD GOLDS**



Copyr. 1957  
Harry H.  
Hollister



# News Presents Background Material

## President of Student Government

Gretchen Diefendorf

Gretchen Diefendorf, candidate for President of Student Government, hails from Summit, New Jersey. Prior to Connecticut, she attended Emma Willard, where she was elected President of her Senior Class. Gretchen was recently appointed Business Manager of Shwiffs; an active member of the group, singing ranks high on her list of enjoyments. A Junior in Windham, she is majoring in Economics.



GRETCHEN DIEFENDORF

Mildred Anne Schmidtman

Mildred Schmidtman, candidate for President of Student Government, is from Washington, D. C. A European History major, Millie, having worked for Civil Service in past summers, hopes to enter into government service after she graduates from Connecticut. Both Freshman and Sophomore years, Millie was vice president of her house, and this year she is Vice President of the Junior Class and House Junior for Winthrop. Besides her other activities, Millie has been Sports Co-ordinator for AA for the past two years.



MILDRED SCHMIDTMAN

## Chief Justice of Honor Court



JUDY JOHNSON

Judy Johnson

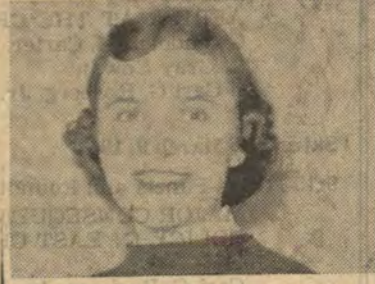
Judy Johnson, candidate for Chief Justice of Honor Court, comes from Braintree, Massachusetts. Judy has been in Shwiffs since her freshman year, and now is leader of the singing group. Presently July is also serving on the Rec Hall Committee for which she is Pledge-Treasurer in addition to holding the position of House Junior for North. Judy supplements her full schedule of activities with organ lessons which have currently become her hobby. An Economics major, Judy's post college plans are undecided.



PAT ASBAUGH

Pat Ashbaugh

Pat Ashbaugh '58, a candidate for Chief Justice of Honor Court, transferred to Connecticut College from the University of Michigan after her Freshman year. Last year she was elected Business Manager for the Conn Chords and was Chairman of the Home Economics department for the 1956 Science Conference. Pat, a Home Economics major from Dearborn, Michigan, is Treasurer of the Junior class, Secretary of the Home Economics and Child Development Club, and is head of Bowling for AA.



SUZANNE HENEAGE

Suzanne Heneage

Suzanne Heneage is a candidate for Chief Justice of Honor Court. Suzie comes from Chicago and is a junior in Windham. Her extra-curricular activities include Religious Fellowship and interclass sports. Last year she was Social Chairman of Religious Fellowship.

## President of AA

Atheline Wilbur

Atheline Wilbur '58, candidate for AA President, comes to Connecticut College from Shaker Heights, Ohio.

Ath has participated in most class sports during the past three years and has earned her Seven Club Award in AA. Freshman year she was Class AA representative and now she is Windham's AA representative. Ath has also taken part in several playdays at other colleges. Ath's other achievements include the duties as Chairman of the Publicity Committee for Junior Prom and her two years of participation in the Learned House Program. She is majoring in Government.



ATHELINE WILBUR

Joan Michaels

Joan Michaels, a junior in Windham, is candidate for AA president. Joan, from Woodbridge, Connecticut, is House Junior of Knowlton. Freshman year she was a member of the Outing Club. Last year Joan was treasurer of the Outing Club and now holds the office of President. She is a three year member of the Choir. As a sophomore, Joan won the CC Athletic Award. This year she has earned the Four Club and the Seven Club AA Awards.



JOAN MICHAELS

## Avakian

(Continued from Page Two)

ed Chanconne by Vitali, Sonata in D minor by Brahms, Out of the Depths by Alan Havhaness (first New York performance) and a Debussy Sonata. Of these, the Vitali and the Hovhaness pointed up Avakian's rich tone quality and were successful.

Mr. Avakian was assisted by Leon Pommers at the piano. The violinist was very amiable, and the whole affair turned out to be the most informal recital I have ever witnessed at Holmes Hall.

## Vice President of Student Government

True Talley

True Talley '58, candidate for the office of Vice President of Student Government, comes to Connecticut from Lock Haven, Pennsylvania, where she also attended high school. An English major, True has taken part in various phases of campus activities since her Freshman year. Last year she began earning points for Wig and Candle membership, and is now working on Publicity for this organization. True is Program Chairman for Station WNLC which is operated under the auspices of the Radio Club. In addition to her duties as House Junior for Vinal, she is President of Mary Harkness. In her Sophomore year, True was appointed to the "C" Book staff by the editor.



TRUE TALLEY

Sally Wilson

Sally Wilson, candidate for Vice President of Student Government, comes from Newton, Massachusetts. In both her Freshman and Sophomore years she was class Treasurer and this year is President of the Junior class. Sally's wide span of interests also includes modern dancing, and last year she danced in The Five Arts Festival and she served on Soph Hop Committee a year ago December. An English major, Sally's post college plans are still indefinite.



SALLY WILSON

## Leblon Review

(Continued from Page One)

the movements of the supporting actress, Signa Irwin in the role of Tom, were vague and not often justifiable from the viewer's seat. Both Miss Kent, as the child prostitute, and Miss Irwin, as her naive kite-flying boy-friend, showed that they understood their parts, but they failed to give their characters much stature; they seemed reticent and were not projecting their lines with conviction. And well they might be excused! To recreate the Mississippi world of Tennessee Williams takes more than comprehension, however penetrant. To this aim the production crew contributed very well: the combination of Judith Ankarstran and Ann Carnahan's three dimensional set, the costumes of Evelyn Woods, and Audrey Bateman's whistle helped convince us, more than Willie did, of the existence of the big yellow house. We also liked Raggedy Ann (the doll, played by herself).

If Willie wants to die soon, like See "Leblon Review"—Page 5

IT'S FOR REAL! by Chester Field



DREAM GIRL

"My ideal gal has got to be From four foot six to six foot three! And I insist, my ideal queen Be plump or slim or in-between. Redhead, brunette, or blonde" . . . said he, "I won't complain if she's a she."

MORAL: Dreaming's fine—but you want to smoke for real. So get behind a Chesterfield. That's flavor, man! That's aroma! Speak up and say Chesterfield—and take your pleasure BIG. Packed more smoothly by ACCU-RAY, it's the smoothest tasting smoke today!

Smoke for real . . . smoke Chesterfield!

\$50 for every philosophical verse accepted for publication. Chesterfield, P.O. Box 21, New York 46, N.Y.

© Liggett & Myers Tobacco Co.



## Carter

(Continued from Page One)

Kappa, and the American Political Science, Canadian Historical and Canadian Political Associations, and is on the International Relations Committee of the American Association of University Women. She has recently been appointed for a two year term to the Council of the American Political Association as the only woman member of the Council.

Miss Carter is author of the section "The Commonwealth Overseas: Variations on a British Theme," dealing with political parties in Canada, Australia, New Zealand and South Africa, in a pioneering and perhaps definitive work on Modern Political Parties edited by Sigmund Newmann of Wesleyan and published January, 1956 by Chicago University Press.



# Of Nominations For Stu. Govt. Offices

## President of Service League

### Pegotty Namm

Pegotty Namm comes to Connecticut College from Lennox School in New York where she was president of Student Government. Pegotty is a resident of New York City. She is a candidate for President of Service League. During her freshman year, she followed her interest in sports and became AA Dorm Representative of Thames and played on the Basketball and Softball teams. She was also active in the Radio Club. Since then, Pegotty has played volleyball and basketball for her class. She has been kept busy by her duties as Community Fund Co-Chairman, as a member of the Student Alumnae Building Committee, and as a participant on the Faculty Student Public Relations Advisory Committee. Pegotty is currently Vice-President of Freeman House.



PEGOTTY NAMM



FRANCES NOLDE

### Frances Dean Nolde

Fran Nolde, a candidate for Service League President, comes from Washington, D. C. Frannie has been a member of the Conn Chords for the past three years. During her freshman year, Fran was also a member of the choir. She has been active in many social functions on Campus. During her freshman year, she was social chairman for Knowlton. She was elected social chairman of her class during her sophomore year. This past year, she has been social chairman of Service League. Fran was among those chosen to participate in the experiment in International Living and under the auspices of this club, she spent this past summer living with a family in France. An English major, Fran lives in Windham House.

## Leblon Review

(Continued from Page Four)

her big sister Alva with maybe a little more Hollywood glamour at the funeral, Gladys Jones, the sinful woman in Ann Frankel's Heavens Above is literally pushed into Paradise by a truck driver and persuaded to like it by her friend Blanche LaFemme. All in all, Good triumphs over Evil and even over Better than Good, and the French adage which says that Le Mieux est parfois l'ennemi du bien is once again proven. No, the Sophomore Class was not rehearsing for Senior Melodrama; it is really not ready for that yet.

The director of the play, Nan Krulewitch, is to be congratulated for a coherent production; she made good use of the stage: angels down in front of the curtain and up behind a diaphanous back scrim helped give the illu-



SANDRA SIDMAN

### Sandra Sidman

Sandy Sidman, candidate for Speaker of the House, came to Connecticut from the high school in her home town of Glenridge, New Jersey. At present, she is serving as Secretary of the International Relations Club, and has been an active member of the Philosophy Club. A member of the AA Board because of her position as captain of the Rifery team, Sandy is fond of sports—tennis and swimming in particular. Sandy is now majoring in Government, but still retains much of her interest in Philosophy, her former choice.



BARBARA QUINN

### Barbara Quinn

Barbara Quinn comes to Connecticut from Chaffee School in Windsor, Conn. She is a resident of West Hartford, Connecticut. During her freshman year, Barb served as a Group Leader and later was elected Work Chairman of Winthrop. In spite of her busy schedule as Advertising Manager of News, she found time to do some radio programs. This past year, she was elected president of Branford. Barb is an Economics major, and she is running for the office of Speaker of the House.



EMILY HODGE

### Emily Hodge

Emily Hodge, a sophomore from Cleveland, is a candidate for Speaker of the House. Last year she was social Chairman of Winthrop and now she is President of Katharine Blunt. A child development major, Emily plans to teach elementary grades after graduation.

## Social Chairman of Service League



LYNN GRAVES

### Lynn Graves

Lynn Graves '59, candidate for Social Chairman of Service League, hails from Old Greenwich, Connecticut. A graduate of Northfield School for Girls, Lynn was elected House President of Knowlton. As a Freshman she was also an Honor Court Judge, and in addition to these duties she worked on the advertising staff of Koine. This year, Lynn got off to an exhausting start by being chased all over campus as she performed her Mascot Hunt duties as President of the Sophomore Class. An Art Major, she hopes to go abroad this summer with the Experiment in International Living.

## Chairman of Chapel Activities

### Katherine Lloyd-Rees

Katherine Lloyd-Rees '59 has been active in Chapel affairs during her two years at Connecticut. She was the Chapel Representative for Knowlton during her Freshman year and is now Chapel Conference Chairman. In addition to this, Katherine was a member of the "C" Book staff last year and has been an active member of the Sailing Club for two years. As a member of the Hockey Club, she participated in the Northwest Hockey Tournament.

Katherine plans to major in Spanish. She is interested in either teaching Spanish or going into some field of business in which she could utilize her language training. Katherine comes from Scottsville, Virginia, and attended St. Catherine's School in Richmond.



KATHERINE LLOYD-REES

### Anne Warner

Anne Warner '59 is active in Religious Fellowship and is a member of the Cabinet of that group. She counts among her other activities the Student Library Committee, Dance Club, and the "C" Book staff. Anne is also a member of the Choir. In addition to her campus activities, Anne is qualified to teach at Seaside.

Anne, who is going to be a Zoology major, plans to become a nurse. She spends her spare time playing the violin and the piano and has taken violin instruction here at CC. Her home town is Woodbury, Conn.



ANNE WARNER

right busy, even if heavenly, body. The only criticism we should like to make is that the performers did not count enough on the spectators to voice their enjoyment; hence, a few lines were completely inaudible.

Edwina Czajkowski's scenery was good and the costumes by Carol Bayfield and Pat Calhoun deserve praise. Ann Frankel's play is not to be evaluated here, for the choice of the play is the thing. From that standpoint, the Sophomore Class acted wisely, in our estimation, when it chose Heaven's Above as their competitive Play. We might have imagined ourselves at times in a secondary school auditorium, but at least we had the feeling that the play was never in the way when the time came to interpret and produce it.

GI 3-7395 Over Juvenile Shop  
**OTTO AIMETTI**  
Ladies' and Gentlemen's Custom  
Tailoring  
Specializing in Ladies' Tailor-Made  
Dresses — Coats and Suits Made  
to Order — Fur Remodeling  
86 State St. New London, Conn.

HOLLY HOUSE  
for  
GOOD FOOD

## President of Wig and Candle

### Mary Ann Handley

Mary Ann Handley '58, candidate for President of Wig and Candle, has been active in that organization ever since she came to Connecticut from the Chaffee School in Manchester. In her Freshman year Mary Ann participated in Compet Plays and worked on Publicity for Wig and Candle. As a Sophomore, she was chosen Compet Play Director for her class, awarded roles in Elec-



MARY ANN HANDLEY

tra and Clandestine Marriage, in charge of the set for the Five Arts play, and a backstage hand for the Faculty Show. This year, Mary Ann designed the set for Basha, served as Stage Manager for the Revesby Sword Play, was Publicity Chairman for The Cocktail Party, and the Director of the Junior Compet Play. Her future schedule will include supervising the lighting for Blood Wedding, and acting as Stage Manager for the Junior Show. A History major, Mary Ann is planning to attend Graduate School when she leaves Connecticut.



SIDNEY WRIGHTSON

### Sydney Wrightson

Sydney Wrightson '58, candidate for President of Wig and Candle, is best known around campus for her roll of Mary Tillford in The Children's Hour, Wig and Candle's winter production of last year. Sydney earned a membership in Wig and Candle her Freshman year by directing her class's compet play, working on sound for Play Production and doing publicity and promoting for Wig and Candle.

In addition to starring in The Children's Hour her Sophomore year, she played in Clandestine Marriage, Paleas and Melisande, and Ladies in Retirement—her classes compet. She also worked on lighting for the latter production. Being the Director of Junior Show this year has limited her activities somewhat, but Sydney has appeared in Basha and worked on sets and was on the stage crew for Cocktail Party. Graduating from the Low-Heywood School in Stamford, Connecticut, Sydney is now a French major. She intends to make dramatics her profession after graduating from here.



MARY BURROWES

### Mary B. Burrowes

Mariby Burrowes '59, candidate for Social Chairman of Service League, comes to Connecticut from Keyport, New Jersey, via Abbot Academy in Andover. As a Freshman, Mariby was chosen Community Fund Representative for Knowlton House. This year, she is kept busy as Social Chairman of Branford and as a member of the Sophomore Committee for Rec Hall. Mariby, a Sociology major, was Publicity Chairman for Mid-Winter Formal.

# VOTE



# Hurry Hurry Hurry Step Right up to Carousel

**ROBERT L. PERRY STUDIO**

**PORTRAITS OF QUALITY**

86 Huntington St. Phone GI 2-3383 New London, Conn.

## MALLOVE'S RECORD DEPT.

The Finest Selection in Town  
Long-Playing — Regular — 45 rpm  
"What you need at any speed"

Shop at Our Modern Music Center  
Complete Record Player Department

**CHARGES WELCOMED CHECKS CASHED**

74 State Street Phone GI 2-4391 New London

### Science Club Open Meeting

Connecticut College's Science Club will have Dr. Ruth Kleinfeld as its guest speaker on March 12 at 4:20 in Hale Laboratory.

Dr. Kleinfeld is presently working at the Yale Medical School on polio and measles viruses. She received her Ph.D. in cytochemistry (the chemistry of cells) from the University of Chicago. One of her major interests is the association of cell changes and certain pathological conditions (conditions having to do with the origin and nature of disease).

This meeting of the Science Club is open to all students. The lecture, according to Sandy Jellinghaus, President, will not be too technical for the non-science major. Nominations for next year's officers will follow the lecture.

## UN Panels Guided by Experts To Discuss African Problems

On the panel speakers for Un Weekend's discussions on Africa is Dr. Errol E. Harris a visiting professor of philosophy at Connecticut College, is a native of South Africa. He holds degrees of Master of Arts from Rhodes University in South Africa, Bachelor of Literature from Magdalen College of Oxford University and Doctor of Literature from the University of Witwatersrand, Johannesburg.

He was a Hugh le May Research Fellow at Rhodes University in 1949 and has held the Alfred Beit Scholarship, the University Scholarship and the Queen Victoria Scholarship. Since 1946 he has been a professor of philosophy at Witwatersrand Univer-

sity. His publications include The Survival of Political Man and Nature, Mind and Modern Science, as well as articles in various professional journals. Dr. Harris will serve as moderator for the panel and round table on South Africa and will participate in the Saturday afternoon panel.

### Carl G. Rosberg

Mr. Carl G. Rosberg, D. Phil, is a research associate in political science, in the African Research and Studies Program, Boston University. He held a Ford Foundation fellowship in 1954-55 for field research in Kenya.

He has done a political study in Ceylon and has traveled in British Central and West Africa. He published several articles on Africa. Mr. Rosberg will speak at the Friday evening and Saturday afternoon programs and will moderate the panel on East and Center Africa.

### Gray Cowan

Mr. L. Gray Cowan was born in Canada and did his undergraduate work at the University of Toronto and his graduate work at Columbia, where he received his Ph.D.

In 1950 he spent some time in North Africa doing a political and economic survey of Algeria. From 1953-55, he traveled on Rockefeller Grant through West Africa, covering the areas of French West Africa, the Gold Coast (Ghana), Nigeria, French Cameroons, French Equatorial Africa and the Belgian Congo. His research during this time was concerned with a comparison of local administration and conciliar and representative structure and their development in British and French Territories. He published several articles on West Africa. Mr. Cowan will speak at the Friday evening and Saturday afternoon programs and will moderate the panel and roundtable on West Africa.

### L. Lewis & Co.

China — Glass — Silverware  
and  
Unusual Gifts  
GI 3-4270 142 State Street

### LAUNDRY-QUIK INC.

241 Bank Street  
GI 2-2889  
One Day Service

### STARR BROS.

REXALL DRUG STORE  
110 State St., New London

Gibson 2-4461

DAILY FREE DELIVERY

Cosmetics Checks Cashed  
Photo Dept. Charge Accounts

### COURTESY DRUG STORE

119 State St. New London  
Cosmetics Prescriptions

Checks Cashed

Free Delivery

Charge Accounts

Films Developed

Tel. GI 2-5857

# Live Modern!

## Pick the Pack that Suits You Best!



On some occasions the Crush-proof box is a natural.  
You are free to choose... only when you smoke modern L&M.



Other times the pack will suit you better.

Smoke modern L&M and always get  
**full exciting flavor**

... PLUS THE PURE WHITE MIRACLE TIP

With L&M... and only L&M...  
can you pick the pack that  
suits you best. And only L&M  
gives you the flavor... the full,  
exciting flavor that makes L&M  
AMERICA'S  
FASTEST-GROWING CIGARETTE

