

1830

Banks of the Blue Moselle

George Herbert Rodwell

Edward Fitzball

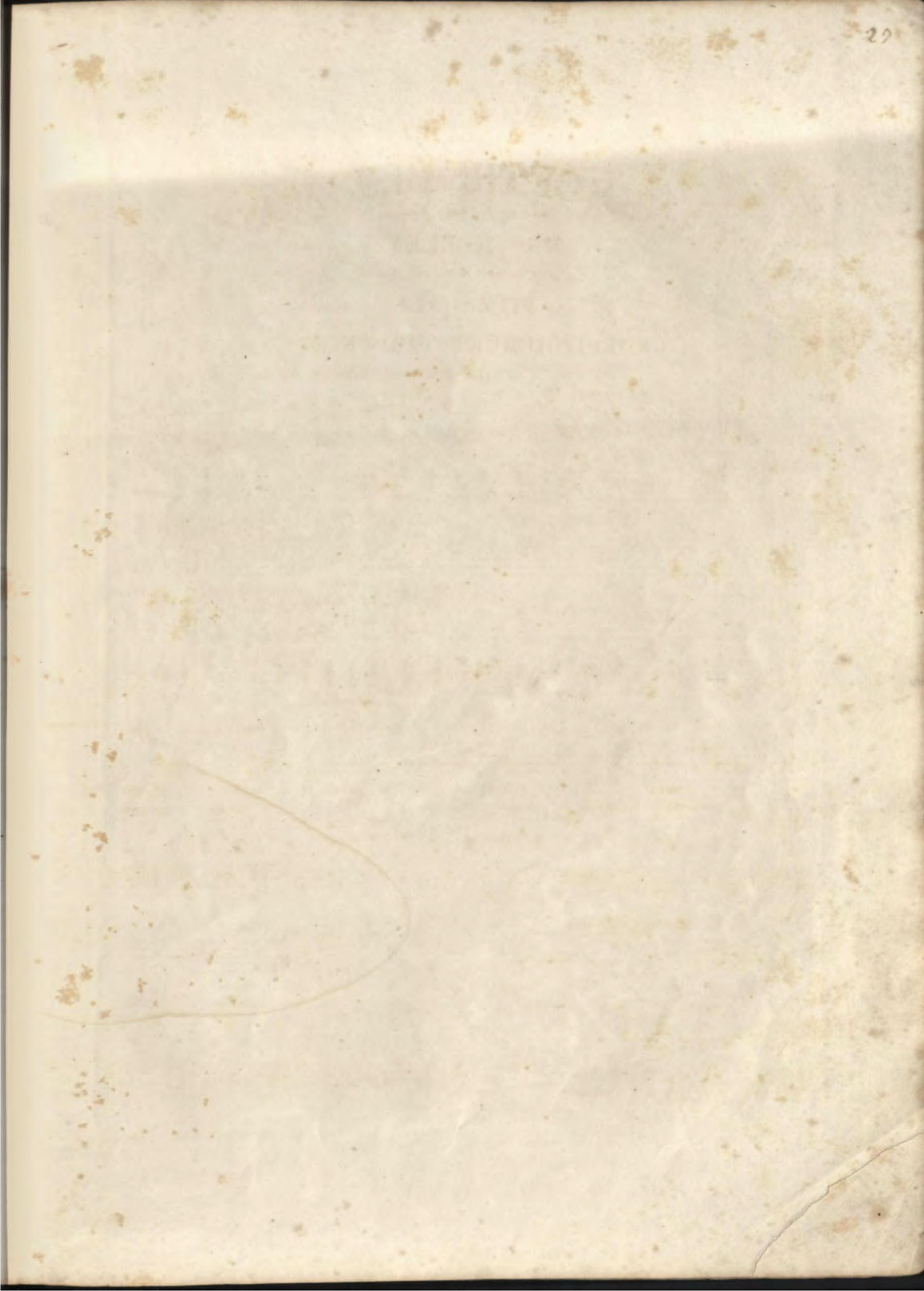
Follow this and additional works at: <http://digitalcommons.conncoll.edu/sheetmusic>

Recommended Citation

Rodwell, George Herbert and Fitzball, Edward, "Banks of the Blue Moselle" (1830). *Historic Sheet Music Collection*. Paper 115.
<http://digitalcommons.conncoll.edu/sheetmusic/115>

This Score is brought to you for free and open access by the Greer Music Library at Digital Commons @ Connecticut College. It has been accepted for inclusion in Historic Sheet Music Collection by an authorized administrator of Digital Commons @ Connecticut College. For more information, please contact bpancier@conncoll.edu.

The views expressed in this paper are solely those of the author.



THE BANKS OF THE BLUE MOSELLE,

— as SUNG by —

MRS KEELEY

with the most Rapturous Applause

Poetry by FITZ BALL, Music by

GEORGE HERBERT RODWELL

NEW YORK: ATWILL Publisher, 201 Broadway.

MODERATO.

The piano introduction consists of two staves. The right hand plays a melodic line with eighth and sixteenth notes, while the left hand provides a harmonic accompaniment with chords and moving lines. Dynamics range from piano (p) to forte (f).

The piano accompaniment for the first vocal line. It features a complex texture with many sixteenth notes in the right hand and chords in the left hand. Dynamics include piano (p) and forte (f).

2^d v. If the
1st v. When the

cares of life should shade thy brow, Yes yes in our na... tive bow'rs My
glow worm gilds the El... fin flow'r, That clings round the ruind shrine, Where

The first system of the vocal score. It includes the vocal line with lyrics and the piano accompaniment. The lyrics are: "cares of life should shade thy brow, Yes yes in our native bow'rs My glow worm gilds the Elf in flow'r, That clings round the ruined shrine, Where".

Lute and heart might best accord, To tell of hap-pier hours. 'Yes
first we met, when first we lov'd, And I con-fess'd me thine, 'Tis

The second system of the vocal score. It includes the vocal line with lyrics and the piano accompaniment. The lyrics are: "Lute and heart might best accord, To tell of happier hours. 'Yes first we met, when first we loved, And I confessed me thine, 'Tis".

there I'll sooth thy grief to rest, Each sigh of sor- row quell.
 there I'll fly to meet thee still, At sound of ves- per bell. In the

p *ad lib*

star- ry light, of a sum mer night, In the star ry light, of a sum mer night, On the

pp

banks of the blue Mo- - selle, On the banks of the blue Moselle, In the

p *ad lib*

star ry light of a sum- mer night, On the banks of the blue Moselle.

p *f* *ad lib*

p *f*

