

1918

Has Anybody Seen my Corinne?

Lukie Johnson

Follow this and additional works at: <https://digitalcommons.conncoll.edu/sheetmusic>

Recommended Citation

Johnson, Lukie, "Has Anybody Seen my Corinne?" (1918). *Historic Sheet Music Collection*. 569.
<https://digitalcommons.conncoll.edu/sheetmusic/569>

This Score is brought to you for free and open access by the Greer Music Library at Digital Commons @ Connecticut College. It has been accepted for inclusion in Historic Sheet Music Collection by an authorized administrator of Digital Commons @ Connecticut College. For more information, please contact bpancier@conncoll.edu.

The views expressed in this paper are solely those of the author.

Has Anybody Seen My Corinne?

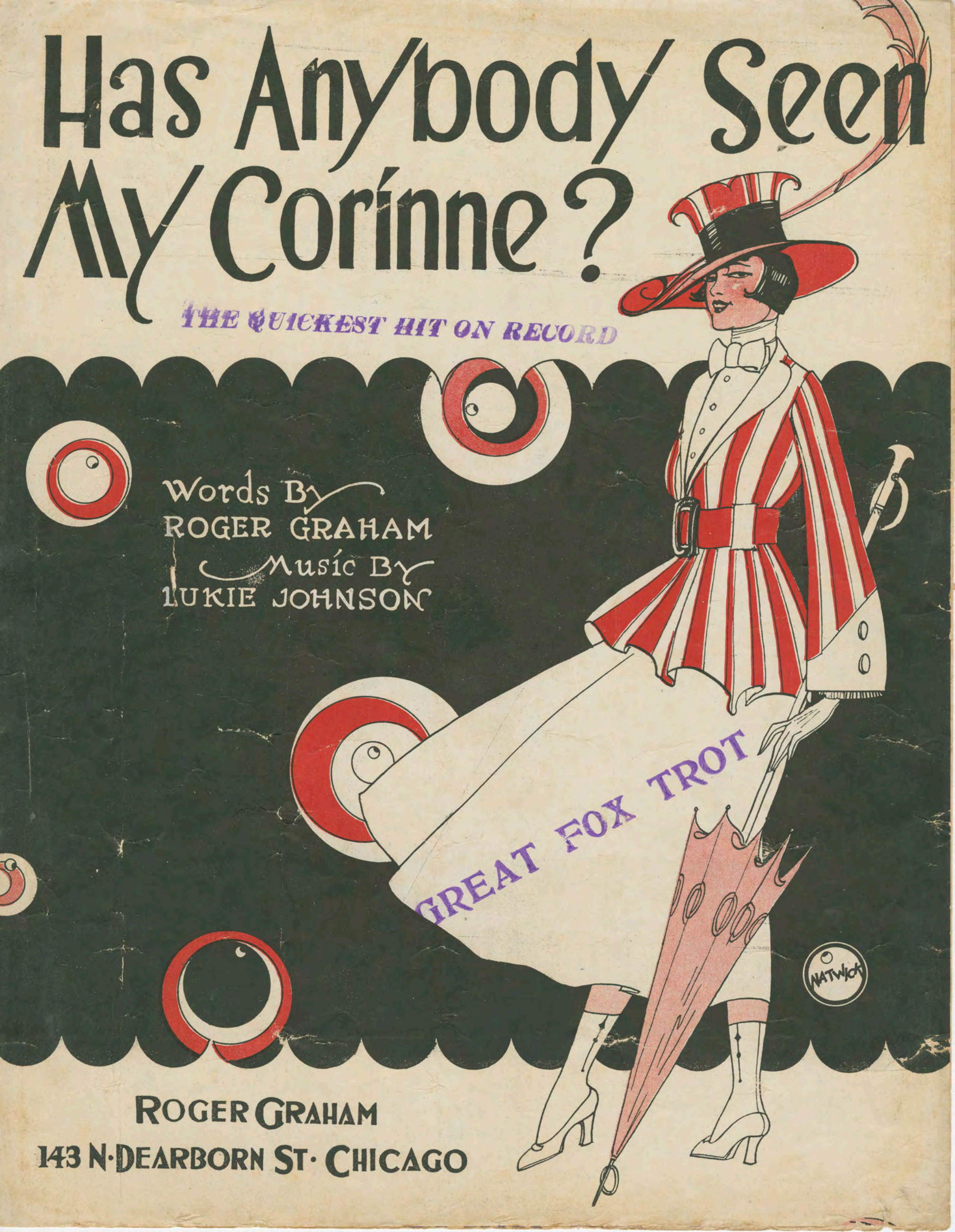
THE QUICKEST HIT ON RECORD

Words By
ROGER GRAHAM
Music By
LUKIE JOHNSON

GREAT FOX TROT

NATWICK

ROGER GRAHAM
143 N. DEARBORN ST. CHICAGO



HAS ANYBODY SEEN MY CORINNE?

Words by
ROGER GRAHAM.

Music by
LUKIE JOHNSON.

Moderato.

VAMP

The piano introduction consists of two systems of music. The first system is marked *f* and features a rhythmic pattern of eighth notes in the right hand and a bass line in the left hand. The second system is marked *p* and features a vamp consisting of repeated chords in the right hand and a simple bass line in the left hand.

My girl ran a - way last night, I did my best to treat her right,
Gee, but she was good and kind, A girl like her is hard to find,

The vocal line for the first two lines of lyrics is written on a single staff. The piano accompaniment is written on two staves (treble and bass clef). The piano part features a steady accompaniment of chords and moving lines.

For no rea - son I can see I was cra - zy 'bout her tho't she was wild a-bout me,
For her sweet smile you would fall For the way she loved me, there's nothing bet-ter than all,

The vocal line continues with the next two lines of lyrics. The piano accompaniment continues with a consistent harmonic support.

Im so wor - ried, 'bout to cry, to think she left and nev - er said good - bye, Heart
Her eyes say, "I've got you, dear," Id kissed her lips, then longed to lin - ger near To

The vocal line continues with the next two lines of lyrics. The piano accompaniment continues with a consistent harmonic support.

brok - en and a - lone I want my ba - by to come home. Has an - y -
hold my babe once more and love her as I did be - fore. Has an - y -

The vocal line concludes with the final two lines of lyrics. The piano accompaniment concludes with a final chord and a short melodic flourish.

CHORUS.

bod - y seen my Co - rinne? Oh, she's a dream, Just like a Vampire,
(She's my Ba-by Doll)

she set my heart on fire I re-gret the day, the

day that I was born, 'Cause my lov - in' Co - rin-na has gone,
(She done me wrong)

If an-y - bod - y sees my Co - rinne No matter where Corin - a may be,

Tell my Corin-na to come right back to me.
me (I want some lovin', sweetie dear.)

Has Anybody Seen My Corinne? 2.

H.S. TALBOT CO.
Music Printers
Chicago.

SAMPLE COPY

BEAUTIFUL SONGS THAT WILL LIVE FOREVER

BY **MAY HILL** — THE POPULAR WESTERN GIRL COMPOSER

TRY THESE OVER ON YOUR PIANO

Words by WALTER HIRSCH

YOU CAN'T BRING BACK YESTERDAY

REFRAIN *Valse Moderato con espressione*
p-mf

Music by MAY HILL.

You can bring back the smile that has faded away, You can bring back a ship on the sea, You can

Words by WALTER HIRSCH.

CHORUS *With expression*

A TEAR, A KISS, A SMILE

Music by MAY HILL.

A tear, a kiss, a smile, Like sunshine after rain That

Words by MARVIN LEE.

THE MOST BEAUTIFUL PICTURE OF ALL

CHORUS. *Valse Moderato con espressione*

Music by MAY HILL.

You may paint ev-'ry day at its dawn-ing Or at dusk, when the night sha-dows fall, The

Words by ROGER GRAHAM.

REFRAIN. *Slowly with expression*

YOU'LL WANT ME BACK SOME DAY

Music by MAY HILL.

You wrecked ev-'ry dream that I had, dear, You shattered each hope that I knew,

Words by ROGER GRAHAM.

CHORUS. *Valse lento con espressione*

I BELIEVE IN YOU

Music by MAY HILL.

I be-lieve that you love-me, I be-lieve you are true,

Words by CASPER NATHAN.

THE QUEEN OF MY CASTLE OF DREAMS

CHORUS. *Valse lento con espressione*

(With Violin Obligato.)

Music by MAY HILL.

She's the Queen of my Cas-tle of Dreams I'm her slave guarding Love's gard-en wall I'm

Price 15 Cents Each, Postpaid.

ALL SIX SONGS — SPECIAL PRICE 75 Cents, Postpaid.

ROGER GRAHAM

143 North Dearborn St.

Chicago, Illinois.