

1833

Maltese Boatmans Song

L. Devereaux

Follow this and additional works at: <https://digitalcommons.conncoll.edu/sheetmusic>

Recommended Citation

Devereaux, L., "Maltese Boatmans Song" (1833). *Historic Sheet Music Collection*. 712.
<https://digitalcommons.conncoll.edu/sheetmusic/712>

This Score is brought to you for free and open access by the Greer Music Library at Digital Commons @ Connecticut College. It has been accepted for inclusion in Historic Sheet Music Collection by an authorized administrator of Digital Commons @ Connecticut College. For more information, please contact bpancier@conncoll.edu.

The views expressed in this paper are solely those of the author.

MALTESE BOATMANS SONG,

Arranged

For

One Two or Three Voices

With an Accompaniment for the

PIANO FORTE,

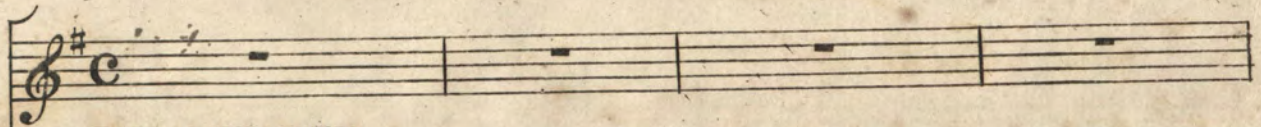
BY

L. Devereaux.

Pr: 38.

New York FIRTH & HALL, 1 Franklin Sq^e

VOICE.

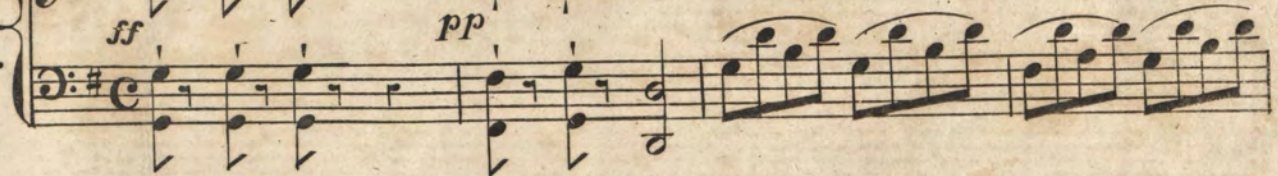


PIU ANDANTE.

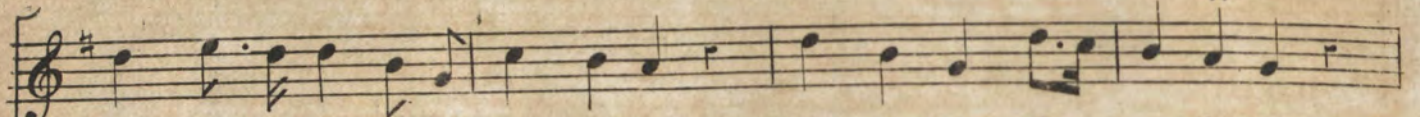
PIANO



FORTE.



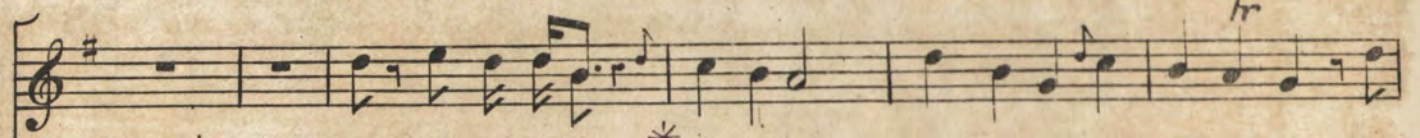
2^d V: See how the tints of... day - light die, Soon we'll hear the ten - der sigh; *hr*



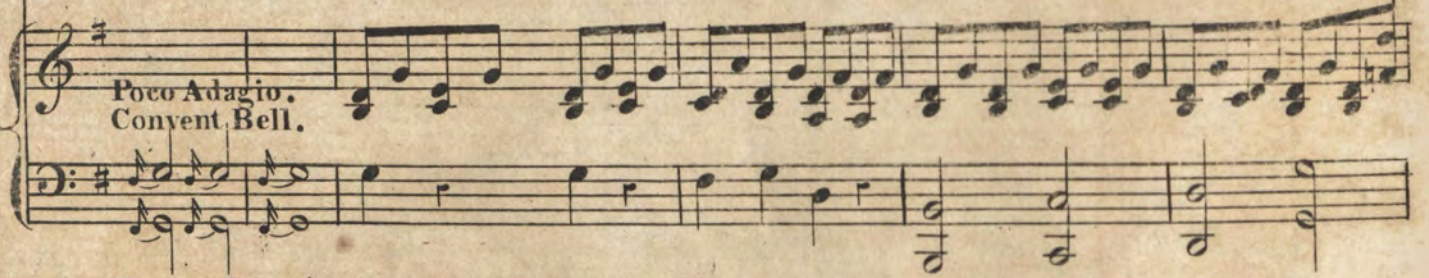
1st V: See, Brothers see, how the night comes on, Slow - ly sinks the set - ting sun,



For when the toil of labour's o'er, We shall meet our friends on shore; Then

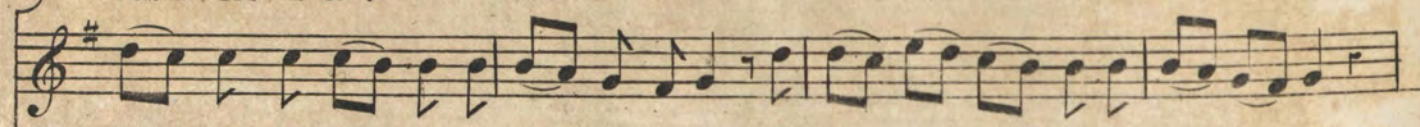


Hark how the solemn * vesper clear Sweetly falls up - on the ear; Then

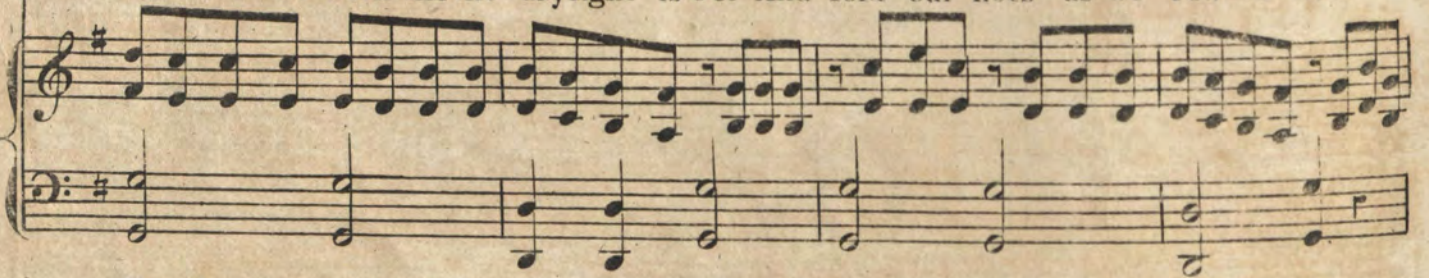


Poco Adagio.
Convent Bell.

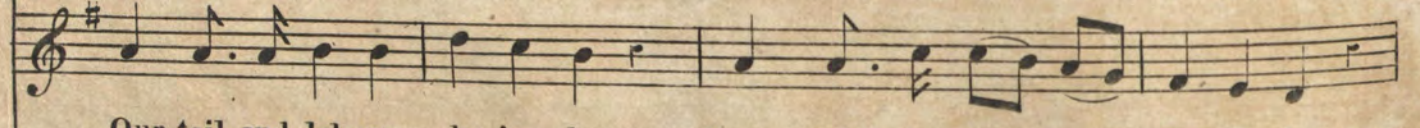
haste let us &c.



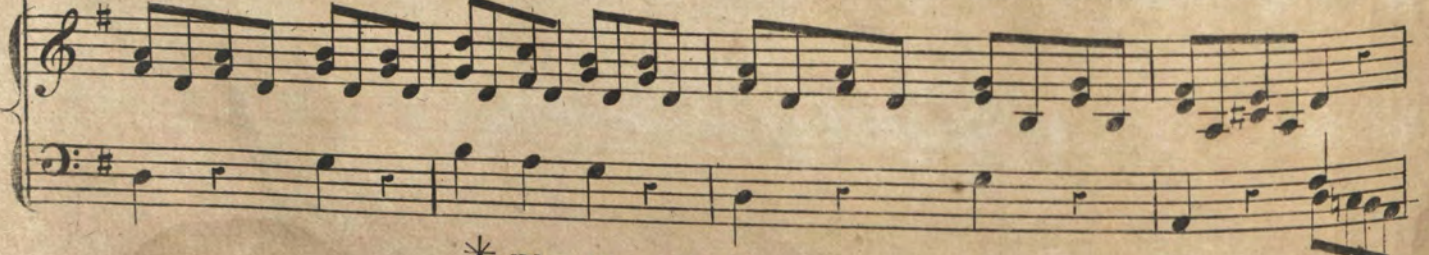
haste let us work till the daylight is o'er And fold our nets as we row to shore



For fame or gold how e'er we roam, No sound so sweet as welcome home.



Our toil and labour be-ing done How sweet the boat - mans welcome home.



* The Vesper Bell.

Home, home, &c.

Home, home, home, the Boatman's welcome home, Sweet O sweet the Boatman's welcome home.

The piano introduction consists of two staves. The right hand plays a melody of eighth and sixteenth notes, while the left hand provides a harmonic accompaniment with chords and single notes.

1st Voice.

Then haste let us work till the daylight is o'er, And fold our nets as we row to shore.

The 1st voice part is a single melodic line in treble clef, featuring a mix of eighth and sixteenth notes.

2d Voice.

Then haste let us work till the daylight is o'er, And fold our nets as we row to shore.

The 2nd voice part is a single melodic line in treble clef, mirroring the 1st voice part.

Bass.

Then haste let us work till the daylight is o'er, And fold our nets as we row to shore.

The Bass part is a single melodic line in bass clef, providing a lower harmonic foundation.

Piano Forte.

The Piano Forte accompaniment consists of two staves. The right hand plays a rhythmic accompaniment with eighth notes and chords, while the left hand plays a simple bass line.

Our toil and labour be- ing done How sweet the Boat- man's welcome home.

Our toil and labour be- ing done How sweet the Boat- man's welcome home.

Our toil and labour be- ing done How sweet the Boat- man's welcome home.

The Piano Forte accompaniment continues with the same rhythmic pattern as the first line.

Home, home, home, the Boatman's welcome home, Sweet, O sweet the Boatman's welcome home.

Home, home, home, the Boatman's welcome home, Sweet, O sweet the Boatman's welcome home.

Home, home, home, the Boatman's welcome home, Sweet, O sweet the Boatman's welcome home.

Welcome home, welcome home, welcome home.

Welcome home, welcome home, welcome home.

Welcome home, welcome home, welcome home.