

Connecticut College

## Digital Commons @ Connecticut College

---

Historic Sheet Music Collection

Greer Music Library

---

1920

### Jennie

Garfield Kilgour

Henry Bergman

Lou Handman

Follow this and additional works at: <https://digitalcommons.conncoll.edu/sheetmusic>

---

#### Recommended Citation

Kilgour, Garfield; Bergman, Henry; and Handman, Lou, "Jennie" (1920). *Historic Sheet Music Collection*. 750.

<https://digitalcommons.conncoll.edu/sheetmusic/750>

This Score is brought to you for free and open access by the Greer Music Library at Digital Commons @ Connecticut College. It has been accepted for inclusion in Historic Sheet Music Collection by an authorized administrator of Digital Commons @ Connecticut College. For more information, please contact [bpancier@conncoll.edu](mailto:bpancier@conncoll.edu).

The views expressed in this paper are solely those of the author.

# Jennie



Words by  
**GARFIELD KILGOUR**  
and  
**HENRY BERGMAN**

Music by  
**LOU HANDMAN**

Irving Berlin, Inc.  
Music Publishers  
1587 Broadway  
New York

©  
R.S.

# Jennie

Words by  
GARFIELD KILGOUR  
and HENRY BERGMAN

Music by  
LOU HANDMAN

Moderato

*ff*

*Till Ready*

*sfz* *p*

Detailed description: This block contains the piano introduction. It starts with a 'Moderato' tempo marking and a fortissimo (*ff*) dynamic. The music is in 2/4 time and features a melody in the right hand and a bass line in the left hand. The introduction concludes with a 'Till Ready' section marked with a piano (*p*) dynamic and a sforzando (*sfz*) accent.

Down town — ov - er Ho - gan's store I found — what I'm looking for She's the sweetest  
Some day com - ing pret - ty soon I'll say in the month of June Jen - nie, you're my

*p*

Detailed description: This block shows the first line of the song. The vocal line is written in a single staff with lyrics underneath. The piano accompaniment is in two staves. The dynamic is marked piano (*p*).

gal Jen - nie she's my pal. Just she — in that ten - e - ment  
pride Won't you be my bride? You guess what she'll answer me

Detailed description: This block shows the second line of the song. The vocal line continues with lyrics. The piano accompaniment continues in two staves.

Fills me — full of sen - ti - ment She'll be mine some day 'Cause ev'ry time we meet I say.  
Just "Yes" if you wait you'll see Then I'll steal a kiss And start to whis - per words like this.

Detailed description: This block shows the third line of the song. The vocal line concludes with lyrics. The piano accompaniment continues in two staves.

THE  
NUM  
e  
be  
for  
Phon  
or  
Pla  
Pi

CHORUS

Jen - nie love me just a lit-tle Jen - nie Why I'd spend me ev'ry pen - ny

Just to win your heart Your sis-ter Mol - ly loves me lit-tle brudder Chol-ly

That's why he's jol - ly 'Cause she makes him glad while I feel sad Why ev'ry Sal-ly in our

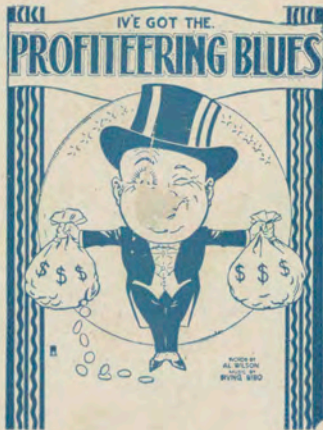
al - ley Would be glad if I'd be pal - ly But for me there's just one gal, see And I'm pretty

wise I go to night school Yes, and me teacher says I'm no fool Gee you're the

sweetest gal of an - y Jen - nie dear, dear.

THIS  
BER  
an  
had  
your  
ograph  
your  
yer-  
ano

# A SENSATIONAL COMEDY SONG HIT



## I'VE GOT THE **PROFITEERING BLUES**



Chorus — I've got the

Prof i-teer-ing blues. — I've got the Prof-i-teer-ing blues — High pric-es make me sick for all my

clothes are worn through, — I'll have to dress like A - dam but what else can I do, — I've got the

prof-i - teer-ing blues — I can't af - ford to buy — a pair of shoes. —

Copyright MCMXX by Irving Berlin Inc., 1587 Broadway, New York City  
International Copyright Secured All Rights Reserved

FOR SALE WHEREVER MUSIC IS SOLD.