

1856

Pretty Fay, Why Away

J. W. Cherry

Follow this and additional works at: <https://digitalcommons.conncoll.edu/sheetmusic>

Recommended Citation

Cherry, J. W., "Pretty Fay, Why Away" (1856). *Historic Sheet Music Collection*. 824.
<https://digitalcommons.conncoll.edu/sheetmusic/824>

This Score is brought to you for free and open access by the Greer Music Library at Digital Commons @ Connecticut College. It has been accepted for inclusion in Historic Sheet Music Collection by an authorized administrator of Digital Commons @ Connecticut College. For more information, please contact bpancier@conncoll.edu.

The views expressed in this paper are solely those of the author.

SIX SONGS

BY

J. W. CHERRY

Author of
Shells of Ocean

MY NATIVE FLOWERS
HER MOUTH IS LIKE A LITTLE CAGE
HE CHANCES NOT
SAILING ON THE SUMMER SEA
MADOLINE

PAULINE
SPEAK NOT LIGHTLY
BE MERRY TO NIGHT
BEAUTIFUL LEAVES
PRETTY FAY, WHY AWAY.

BOSTON

Published by OLIVER DITSON Washington St

C. C. CLAPP & Co.
Boston

BECK & LAWTON
Philad^a

D. A. TRUAX.
Cincinnati

H. D. HEWITT.
N. Orleans

S. T. GORDON.
N. York



PRETTY FAY, WHY AWAY.

J. W. Cherry.

Cherry's Songs.



Pretty Fay, All the day Where art thou stay - ing?



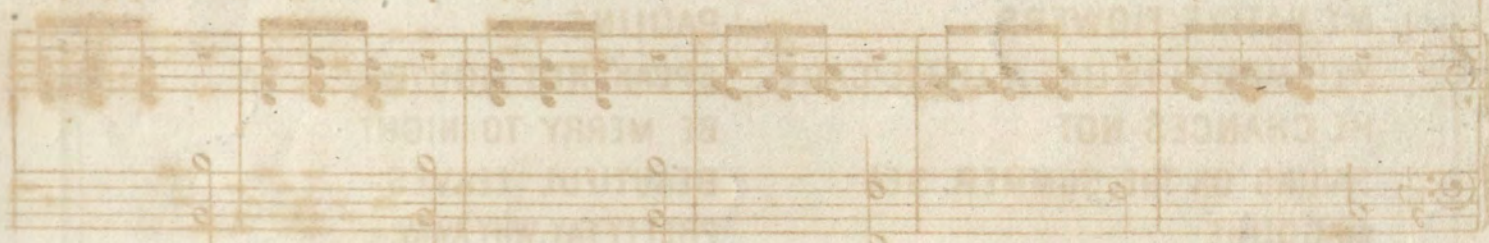
Pretty Fay, why s-w-a-y Where art thou go - ing?



Don't thou lie Neath the sky, Mid' breezes play - ing Round thy bed, O'er thy head,



Stay with me, much from thee I would be know - ing; Spirit fair, child of air,



Gay flowers way - ing; At thy feet, Brooming sweet, Bright waters lav - ing



Where is thy dwelling, Tell to me if it be Earth's joy ex - celling



PRETTY FAY, WHY AWAY.

Cherry's Songs.

J. W. Cherry.

The piano introduction consists of two staves. The right hand features a melodic line with eighth and sixteenth notes, while the left hand provides a harmonic accompaniment with chords and single notes.

Pret-ty Fay, All the day Where art thou stay - ing?

The first line of the song is set in 2/4 time. The vocal line is on a single staff, and the piano accompaniment is on two staves. The lyrics are: "Pret-ty Fay, why a-way Where art thou go - ing?"

Dost thou lie 'Neath the sky, Mid breezes play - ing Round thy bed, O'er thy head,

The second line of the song continues the melody. The lyrics are: "Stay with me, much from thee I would be know - ing; Spirit fair, child of air,"

Gay flow'rets wav - ing; At thy feet, Murm'ring sweet, Bright waters lav - ing;

The final line of the song concludes the piece. The lyrics are: "Where is thy dwelling Tell to me if it be Earth's joy ex - celling;"

In some star For thy car, Mid splendour beam - ing, Doest thou ride
 When the day Dies a - way, 'Mid all the splen - dour Clouds of gold

In thy pride, Near maid - ens dream - ing; Then with spells, Which ex - cels
 can un - fold, Or twi - light ren - der; Doest thou come From thy home

All mor - tals know - ing, As their friend Doest thou send Bright vi - sions
 'Mid fai - ry flow - ers, On the wing, Here to sing with magic

glow - ing? Pret - ty Fay, &c.
 pow - ers? Pret - ty Fay, why a - way Where art thou go - - ing?

Stay with me, Much from thee I would be know - ing; Spi - rit fair,

Child of air, Where is thy dwell - ing Tell to me If it be

rall:

colla voce.

Earth's joy ex - celling.

tempo

rall:

Faint, illegible text at the top of the page, possibly a title or header.

Faint, illegible text on the first line of the page.

Faint, illegible text on the second line of the page.

Faint, illegible text on the third line of the page.

Faint, illegible text on the fourth line of the page.

Faint, illegible text on the fifth line of the page.

Faint, illegible text on the sixth line of the page.

Faint, illegible text on the seventh line of the page.

Faint, illegible text on the eighth line of the page.

Faint, illegible text on the ninth line of the page.

Faint, illegible text on the tenth line of the page.

Faint, illegible text on the eleventh line of the page.

Faint, illegible text on the twelfth line of the page.