

1834

# Erin is My Home

James Gaspard Maeder

Follow this and additional works at: <https://digitalcommons.conncoll.edu/sheetmusic>

---

## Recommended Citation

Maeder, James Gaspard, "Erin is My Home" (1834). *Historic Sheet Music Collection*. 889.  
<https://digitalcommons.conncoll.edu/sheetmusic/889>

This Score is brought to you for free and open access by the Greer Music Library at Digital Commons @ Connecticut College. It has been accepted for inclusion in Historic Sheet Music Collection by an authorized administrator of Digital Commons @ Connecticut College. For more information, please contact [bpancier@conncoll.edu](mailto:bpancier@conncoll.edu).

The views expressed in this paper are solely those of the author.



**"ERIN IS MY HOME"**

**Ballad.**

*Sung by*

**MR. MAEDER,**

Composed & dedicated

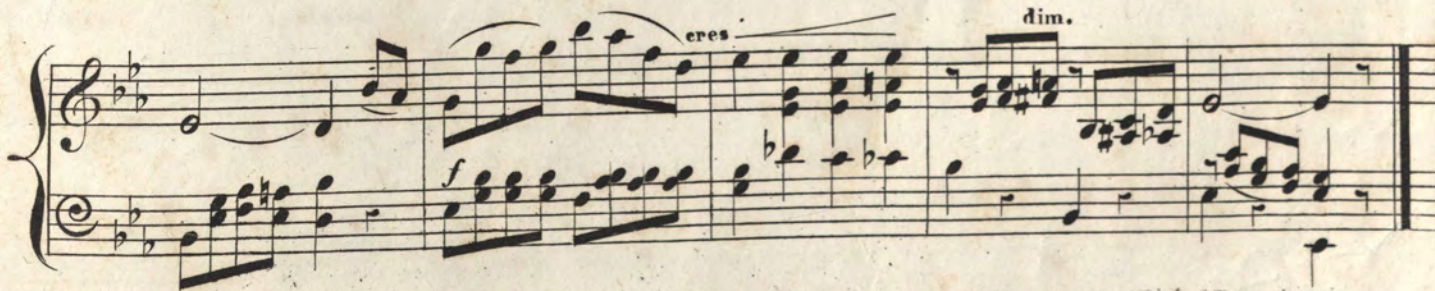
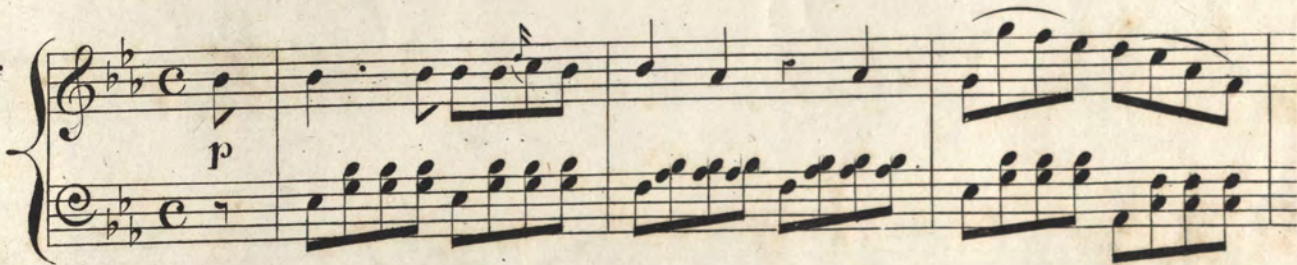
*to*  
**John E. Sullivan, Esq.**

*by*

**JAMES G. MAEDER.**

*New York, JOHN F. NUNNS 240 Broadway.*

**ANDANTE  
AFFETUOSO.**



*Entered according to Act of Congress in the Year 1834 by Krotzschmer & Nunn's at the Clerk's Office in the East<sup>1</sup> Dist<sup>1</sup> of Pennsylvania.*



Oh I have roved in ma-ny lands, And ma ny friends I've

*p*

met, Not one fair scene or kind-ly smile, Can

this fond heart for-get, But I'll con-fess that leaving

*f*

them, No more I wish to roam, Oh

*p* *f*

Erin is my home.





espres:

steer my barque to E\_rin's Isle, For E\_rin is my

ritard:

Home! Oh steer my barque to E\_rin's Isle, For

ad lib:

Erin is my Home!

2.

If England were my place of birth,  
 I'd love her tranquil shore,  
 And if Columbia were my home  
 Her freedom I'd adore.  
 Though pleasant days in both I pass,  
 I dream of days to come,  
 Oh steer my barque to Erin's Isle,  
 For Erin is my home!

Erin is my home.



