

1905

Mazie

Alfred Baldwin Sloane

Frederic Ranken

Follow this and additional works at: <https://digitalcommons.conncoll.edu/sheetmusic>

Recommended Citation

Sloane, Alfred Baldwin and Ranken, Frederic, "Mazie" (1905). *Historic Sheet Music Collection*. 902.
<https://digitalcommons.conncoll.edu/sheetmusic/902>

This Score is brought to you for free and open access by the Greer Music Library at Digital Commons @ Connecticut College. It has been accepted for inclusion in Historic Sheet Music Collection by an authorized administrator of Digital Commons @ Connecticut College. For more information, please contact bpancier@conncoll.edu.

The views expressed in this paper are solely those of the author.

HARRY E. CONVERSE
& MASON PETERS
PRESENT THEIR FANCIFUL
Fairyesque



THE GINGERBREAD MAN



Book & lyrics by

**FREDERIC
RANKEN**



Music by

**A. BALDWIN
SLOANE**

THE EVIL EYE	-	-	-	60
MAZIE	-	-	-	60
BEAUTIFUL LAND OF BON BON	-	-	-	60
JOHN DOUGH	-	-	-	60
DO YOU BELIEVE IN SANTA CLAUS	-	-	-	60
MARCH ON, O SOLDIER	-	-	-	60
THE GINGERBREAD CADETS, March	-	-	-	60

OLD RAMESES	-	-	-	-	60
NURSERY RHYMES	-	-	-	-	60
MOON	-	-	-	-	60
WISE OLD OWL	-	-	-	-	60
EVERY LITTLE SOMETHING	-	-	-	-	60
TOAST "TO SALLY"	-	-	-	-	60
QUEEN OF MY DREAMS	-	-	-	-	60



PUBLISHED BY
CHAS. K. HARRIS
NEW YORK
CHICAGO
CANADIAN-AMERICAN MUSIC CO. LTD. - TORONTO, CANADA.
ALBERT & SON
LONDON AND SYDNEY



STARMER

Selection = \$1.00

Vocal Score = \$2.00

SMITH BROTHERS
SHEET MUSIC
33 & 39 BANK STREET,
NEW LONDON, CONN.

Copyright MCMV by Chas. K. Harris.
British Rights Secured.

know of one and so do you with which none can com-pare, She's
spark - ling bright - ness, stars at night, must yield to you the prize, Such

all the flowers that ev - er grew, In cu - pid's gar - den fair, I
moon - beams ev - er gave the light, That shines from out your eyes, In

Of
What

Music by
A. BALDWIN SLOANE.

Lyric by
FREDERIC RANKEN.

Mazie.

just a dain - ty dim - pled maid, with eyes of deep - est blue, A
nec - tar gave no hon - ey flow'r, as on your lips so sweet, If

rose - tint cheek and best of all, A heart for - ev - er true. —
I pos - sessed a king - ly pow'r, I'd lay it at your feet. —

REFRAIN.

Ma - zie, Ma - zie, ev - 'ry - bod - y knows you are

L.H. *L.H.*

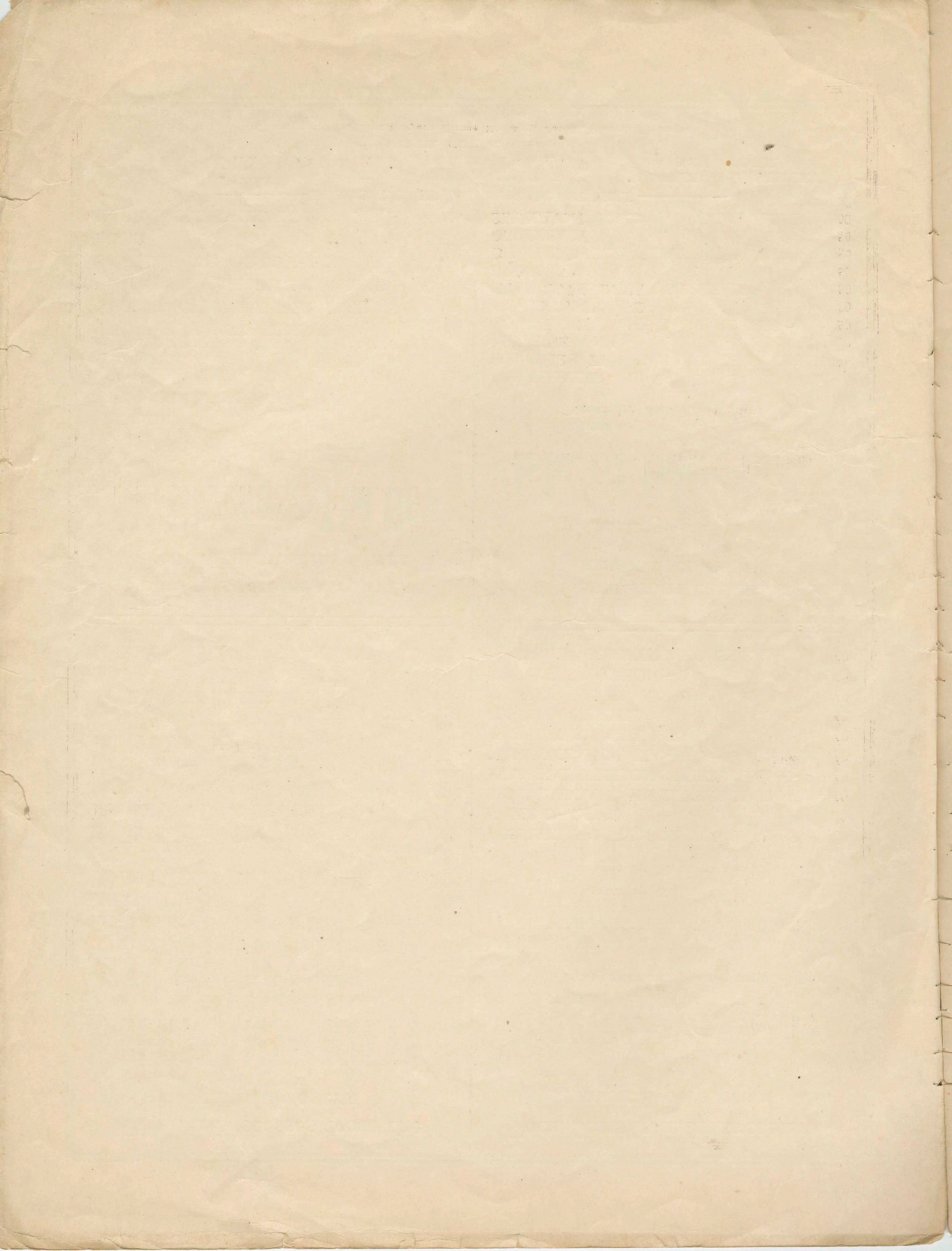
p - f

miss me come and kiss me Ma - zur - ka
do. do.

1 2

Come dear I'm here wait - ing just for you, Don't you

neat - er, you are sweet - er than the full blown rose,



Popular successes from the
beautiful opera

"SERGEANT KITTY"

Music by A. Baldwin Sloane
Lyrics by R. H. Burnside

You Never Know What's Going to Happan Next	60
Ninon's Father Doesn't Seem to Mind	60
Love Laughs at Locksmiths	60
The One I Love the Best Gave That to Me	60
Love	60
Oh, Star of Hope	60
True Love Lives But In Our Dreams	60
War!	60
The Girl He Left Behind Him	60
Just Take Things As They Come	60
Oh, Kitty	60
We Are A Gallant Regiment, March Song	60
Waltz	60
March	60
Selection	\$1.00
Vocal Score	\$2.00

Popular successes from the
beautiful musical satire

"His Highness The Bey"

Lyrics by Hough & Adams
Music by Jos. E. Howard

HONOLULU	60
THE LAND OF NOD	60
MY GYPSY MAID	60
JULIE DOOLEY	60
THE KITTY AND THE OWL	60
STORIES OF A SUMMER NIGHT	60
IN THE ORANGE BLOSSOM LAND	60
SWEETHEARTS OF BOYHOOD DAYS	60
LOUIE	60
IN DEAR OLD KANKAKEE	60

Vocal Gems from the successful
musical potpourri

"Higgledy=Piggledy"

AS PRODUCED AT THE

Weber Music Hall, New York

Lyrics by Edgar Smith
Music by Maurice Levi

FOR YOU, HONEY, FOR YOU	60
GAME OF LOVE	60
BIG INDIAN AND HIS LITTLE MAID	60
MISS WATERMELON SWEET, Coon song	60
NANCY CLANCY, Waltz song	60
A GREAT BIG GIRL LIKE ME	60
I'M SO LONESOME	60
IN GAY PAREE	60
SOCRATES JACKSON	60
MAMMA'S BOARDING HOUSE	60

Vocal Gems from the successful
musical comedy

— The —

"Isle of Bong=Bong"

Lyrics by Hough & Adams
Music by Jos. E. Howard

MY ILLINOIS	50
IF I WERE THE MAN IN THE MOON	50
ASK THE MAN	50
YOU'RE JUST THE SAME TO ME	50
I'M LONESOME FOR YOU	50
HEAP LOVE, INDIAN SERENADE	50
BROWNIES	50
OH THE DEUCE, WHAT'S THE USE	50
DIPLOMACY	50
SELECTION	\$1.00
VOCAL SCORE	2.00

FOR SALE AT ALL MUSIC STORES

Published
by . . .

CHAS. K. HARRIS,

31 WEST 31st STREET,
NEW YORK.

MEYER COHEN, Manager

Chicago Office, Grand Opera House Building, Joe M. Harris, Manager