

Connecticut College

Digital Commons @ Connecticut College

Historic Sheet Music Collection

Greer Music Library

1913

There's A Long, Long Trail

Stoddard King

Zo Elliot

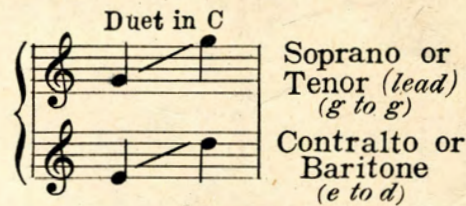
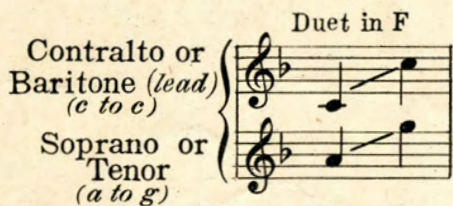
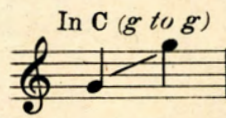
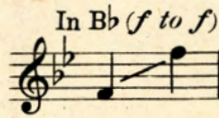
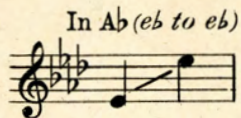
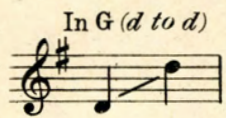
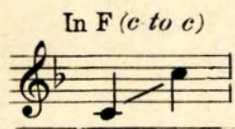
Follow this and additional works at: <https://digitalcommons.conncoll.edu/sheetmusic>

Recommended Citation

King, Stoddard and Elliot, Zo, "There's A Long, Long Trail" (1913). *Historic Sheet Music Collection*. 1092.
<https://digitalcommons.conncoll.edu/sheetmusic/1092>

This Score is brought to you for free and open access by the Greer Music Library at Digital Commons @ Connecticut College. It has been accepted for inclusion in Historic Sheet Music Collection by an authorized administrator of Digital Commons @ Connecticut College. For more information, please contact bpancier@conncoll.edu.

The views expressed in this paper are solely those of the author.



THERE'S A LONG, LONG TRAIL



WRITTEN BY

STODDARD KING

COMPOSED BY

ZO ELLIOTT

Solo 60 Cents

Duet 75 Cents



M. WITMARK & SONS,

NEW YORK • CHICAGO • LONDON.

Mission Phonograph & Piano Co.
2538 Mission & 151-16th St.
SAN FRANCISCO • CAL.

A Song, - Full of Sunshine and Love

EVENING BRINGS REST AND YOU

With Violin or Cello *Obbligato ad lib.*

Published as follows

Solo, Four Keys - *E♭, B♭ to D, F, C to E, G, D to F♯, B♭, F to A*, 60 cents each

Duet, Two Keys - In *F*, Alto or Baritone (lead) and Soprano or Tenor

In *B♭*, Soprano or Tenor (lead) and Alto or Bass, 75 cents each

Violin or Cello *Obbligato* 15 cents each

Male, Female or Mixed Voices, 15 cents each

Lyric by
EDNA STANTON WHALEY

Music by
F. H. BISHOP

Moderately slow

pp

When the sky in the East flames crim-son and gold In the light of the morn- ing sun, — When in

p

clear lilt-ing voice sweet song birds re-joice, Bid-ding wel-come to day just be - gun: — Then I

poco cresc. *f* *p*

Tenderly

pass on my way to the la-bor of day, And your smile as we part thrills me through, — For it

and with much expression

short-ens the day till the light fades a - way, And eve-ning brings rest and you, — And

colla voce

Published and Copyrighted MCMXVI by M. Witmark & Sons. 10 Witmark Building, New York
CHICAGO SAN FRANCISCO LONDON PARIS

Complete Copies can be had wherever Music is sold or from the Publishers
Solo, 60 cents; Duet, 75 cents; Discount 1/2 off postpaid. Octavo, 15 cents each net, postpaid

There's A Long, Long Trail

1.

Nights are growing very lonely,
Days are very long;
I'm a growing weary only
List'ning for your song.
Old remembrances are thronging
Thro' my memory,
Till it seems the world is full of dreams
Just to call you back to me.

Chorus

There's a long, long trail a-winding
Into the land of my dreams,
Where the nightingales are singing
And a white moon beams:
There's a long, long night of waiting
Until my dreams all come true;
Till the day when I'll be going down
That long, long trail with you.

2.

All night long I hear you calling,
Calling sweet and low;
Seem to hear your footsteps falling,
Ev'rywhere I go.
Tho' the road between us stretches
Many a weary mile
I forget that you're not with me yet
When I think I see you smile.

Stoddard King

There's A Long, Long Trail

Written by
STODDARD KING

Composed by
ZO ELLIOTT

Moderato

The piano introduction consists of two staves. The right hand starts with a treble clef, a key signature of one flat (B-flat), and a common time signature. It begins with a series of chords and a melodic line that descends. The left hand starts with a bass clef and provides a harmonic accompaniment with chords and single notes. Dynamics include a forte (*f*) marking at the beginning and a piano (*p*) marking towards the end.

With expression

The first system of the vocal and piano accompaniment. The vocal line is on a single staff with a treble clef and a key signature of one flat. The lyrics are: "Nights are grow-ing ver - y lone - ly, Days are ver - y All night long I hear you call - ing, Call - ing sweet and". The piano accompaniment is on two staves (treble and bass clefs) with a key signature of one flat. It features a piano (*p*) dynamic marking.

The second system of the vocal and piano accompaniment. The vocal line continues with the lyrics: "long; I'm a - grow - ing wear - y on - ly low; Seem to hear your foot-steps fall - ing,". The piano accompaniment continues on two staves with a piano (*p*) dynamic marking.

List - 'ning for your song. Old re - mem - bran - ces are
 Ev - 'ry - where I go. Tho' the road be - tween us

throng - ing Thro' my mem - o - ry. Till it seems the world is
 stretch - es Man - y a wear - y mile, I for - get that you're not

full of dreams Just to call you back to me.
 with me yet, When I think I see you smile.

REFRAIN *Evenly with much expression*

There's a long, long trail a - wind - ing In - to the land of my

dreams,— Where the night - in-gales are sing - ing And a white moon

pp *rit.*

beams:— There's a long, long night of wait - ing— Un-til my

f *pp*

dreams all come true;— Till the day when I'll be

ff

go - ing down That long, long trail with you. There's a you.—

rit. *p*

BEAUTIFUL SACRED SONGS FOR CHURCH, HOME AND CONCERT USE

Teach Me To Pray

Lyric by
GEORGE GRAFF Jr.

Solo Five Keys—*E♭, (♭♭ to d) F, (c to c) G, (d to f♯) A♭, (e♭ to g) B♭, (f to a)*
Duet Two Keys—*F and B♭. Octavo; Male, Female or Mixed Voices*

Music by
JESSIE MAE JEWITT

Andante religioso
Fervently

Teach me to pray, Lord God in Heav'n a - bove, Teach me to know that in Thy bound-less love, Thou see-est ev - - 'ry
spar-row that may fall, And giv - est what is best for all. Al - tho' my ways are laid in pas - tures drear,

p dolce *mp* *mp* *p rit.* *mf a tempo*

I Come To Thee

Lyric by
GEORGE GRAFF Jr.

Solo Four Keys—*D♭, (♭♭ to c) E♭, (c to d) F, (d to e) A♭, (f to g)*
Duet in *F. Octavo; Male, Female or Mixed Voices*

Music by
CARO ROMA

Lento

I come to Thee at last, oh Lord, for rest, With wa-sted years, with heart and mind op - pressed; And now Thy
prom - ise is to me so sweet, That I shall find for - give - ness at Thy feet.

mp *dim.* *rit.* *dim.* *colla voce*

It Was For Me

Solo Three Keys—*F, (c to d) A♭, (e♭ to f) B♭, (f to g)*
Duet Two Keys—*B♭ and F. Octavo; Male, Female or Mixed Voices*

Lyric and Music
By CHARLES B. BLOUNT

Andante cantabile

It was for me, that Je - sus came to suf - fer, It was for me, He died up - on the tree, It was for
me, with God, He in - ter - ced - ed, It was for me, ah yes, it was for me.

p *p* *cresc.* *mf* *dim.* *mp* *ad lib.* *p* *cresc.* *mf* *dim.* *mp* *colla voce* *cantando*



Published and Copyrighted by M. Witmark & Sons 10 Witmark Building, New York
Complete Copies can be had wherever Music is sold or from the Publishers
Solo, 60 cents; Duet, 75 cents; Discount 1/2 off postpaid. Octavo, 15 cents each net, postpaid





FOUR BEAUTIFUL BALLADS

SELECTED FROM

THE WITMARK BLACK AND WHITE SERIES



THAT SHOULD BE IN EVERY HOME WHERE SINGING IS A FAVORITE PASTIME

MY ROSARY FOR YOU

Lyric by
AMY ASHMORE CLARK

Music by
ERNEST R. BALL

In Barcarole tempo *With expression.*

A ros-a-ry I wrought for you, Each pearl a mem-o-ry Of
hap-pi-ness my heart once knew, Of love you had for me. Each
ros-ar-y must have its cross To bear un-to the end, And

p a tempo

rit.

a tempo

Copyright MCMXVI by M. Witmark & Sons

SOLO, FIVE KEYS—C, (C TO D) D \flat , E \flat , F, G. DUET, TWO KEYS—D \flat , F.
Quartets for Male, Female and Mixed Voices.

THERE'S A LONG, LONG TRAIL

Lyric by
STODDARD KING

Music by
ZO. ELLIOTT

Evenly with much expression

There's a long, long trail a-wind-ing In to the land my
dreams, Where the night-in-gales are sing-ing And a white moon
beams: There's a long, long night of wait-ing Un-til my

p - f a tempo

pp *pp* *rit.*

f *pp*

Copyright assigned MCMXV to M. Witmark & Sons

SOLO, FIVE KEYS—F, (C TO C), G, A \flat , B \flat , C. DUET, TWO KEYS—F, C.
Quartets for Male, Female and Mixed Voices.

EVENING BRINGS REST AND YOU

Lyric by
EDNA STANTON WHALEY

Music by
F. H. BISHOP

Moderately slow

When the sky in the East flames crim-son and gold In the light of the morn-ing sun, When in
clear lit-ting voice sweet song birds re-joice, Bid-ding wel-come to day just be-gun: Then I
pass on my way to the la-bor of day, And your smile as we part thrills me through, For it

pp

poco cresc.

Tenderly

and with much express. Copyrighted MCMXVI by M. Witmark & Sons.

SOLO, FOUR KEYS—E \flat , (B \flat TO D) F, G, B \flat . DUET, TWO KEYS, F, B \flat
Quartets for Male, Female and Mixed Voices.

Too-ra-loo-ra-loo-ral THAT'S AN IRISH LULLABY

Lyric and Music by J. R. SHANNON

Smoothly with much expression

"Too-ra-loo-ra-loo-ral, Too-ra-loo-ra-li.
Too-ra-loo-ra-loo-ral, Hush now, don't you cry!
Too-ra-loo-ra-loo-ral, Too-ra-loo-ra-

mp in time

Copyright MCMXIII by M. Witmark & Sons

SOLO, FOUR KEYS—C, (C TO C) E \flat , F, G. DUET, TWO KEYS, E \flat , G.
Quartets for Male, Female and Mixed Voices.

THE ABOVE CAN BE HAD WHEREVER MUSIC IS SOLD OR OF THE PUBLISHERS

M. WITMARK & SONS — 10 WITMARK BUILDING — NEW YORK

Price, Solos 60c. Duets 75c. Discount, One-Half Off, Postpaid. Quartets, 15c Each, Net, Postpaid.

If you are interested in Beautiful Songs (Sacred or Secular) send for our Catalog containing complete Poems and Thematic quotations from some of the most beautiful numbers in the well-known

WITMARK BLACK AND WHITE SERIES

ENCLOSE STAMP FOR POSTAGE.

