

Connecticut College

## Digital Commons @ Connecticut College

---

Historic Sheet Music Collection

Greer Music Library

---

1858

### O'er Thee Alone

William Thomas Wrighton

Follow this and additional works at: <https://digitalcommons.conncoll.edu/sheetmusic>

---

#### Recommended Citation

Wrighton, William Thomas, "O'er Thee Alone" (1858). *Historic Sheet Music Collection*. 1161.  
<https://digitalcommons.conncoll.edu/sheetmusic/1161>

This Score is brought to you for free and open access by the Greer Music Library at Digital Commons @ Connecticut College. It has been accepted for inclusion in Historic Sheet Music Collection by an authorized administrator of Digital Commons @ Connecticut College. For more information, please contact [bpancier@conncoll.edu](mailto:bpancier@conncoll.edu).

The views expressed in this paper are solely those of the author.

OVER THEE ALONE

SONG

BY

W. T. WRIGHTON.



BOSTON.  
OLIVER DITSON & CO. 277 Washington St.

Chicago.  
Lyon & Healy.

Cinn.  
J. Church, Jr.

N. YORK.  
G. H. DITSON & CO.

Boston.  
J. C. Haynes & Co.

Phil<sup>a</sup>  
G. W. A. Trumpler.

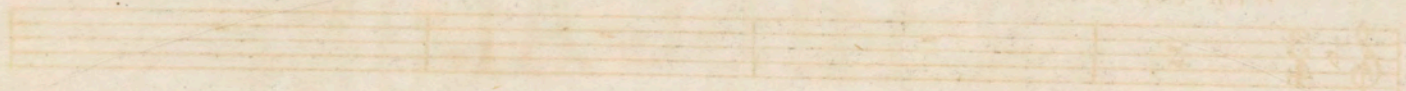




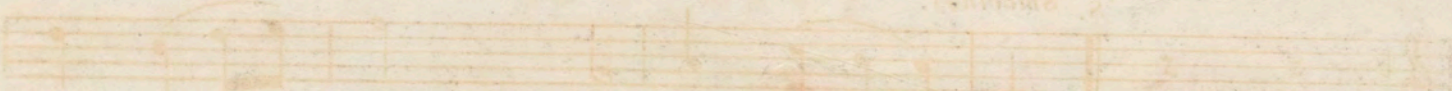
# OVER THE ALONE

Composed by W. T. WRIGHTON

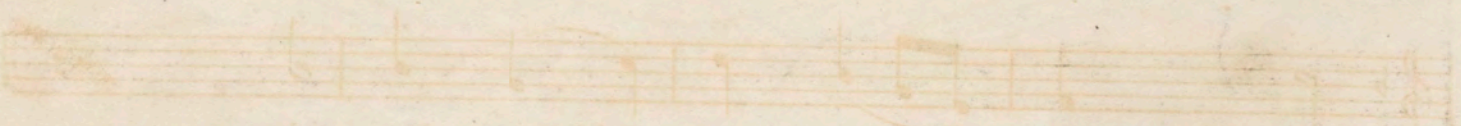
With accompaniment



Secondly



1. Get thee a lamb  
2. Get thee a best one  
Oh, in  
thy



one  
hour  
May  
friend  
ship  
bless  
thy  
hand  
May  
love  
on  
fold  
its  
wing





# O'ER THEE ALONE.

COMPOSED BY W.T. WRIGHTON.

*With expression.*

The piano introduction consists of three measures in 3/4 time, marked with a key signature of one flat (B-flat). The right hand plays a simple melody starting on a whole note G4, followed by quarter notes A4, B4, and C5. The left hand provides a harmonic accompaniment with chords: G4-Bb4, G4-Bb4-C4, and G4-Bb4-C4.

*Smoothly.*

The first two lines of the song are set in 3/4 time with a key signature of one flat. The vocal line begins with a whole note G4, followed by quarter notes A4, B4, and C5. The piano accompaniment features a steady bass line with chords: G4-Bb4, G4-Bb4-C4, and G4-Bb4-C4.

1. O'er thee..... a lone, oh, gen.....tle  
 2. O'er thee..... dear one, in ev'.....ry

The final line of the song continues the melody and accompaniment. The vocal line includes the lyrics: one, May love..... un.....fold its wing,  
 hour, May friend..... ships' blos.....soms bend,



And give..... thee shel.....ter from..... the  
 And guard thee as a ten.....der

storms Which com.....ing years may bring.  
 flow'r, On which soft dew's de....scend.

Too frail art thou to bear the  
 E.....ver to thee, so sweet, so

cold, The blight.....ing frost..... of  
 frail, Should fond.....est love..... be



time; .....  
 given, .....

Thou'rt To look ..... ing  
 To keep ..... the

for a bet ..... ter land — A  
 plant whose blos ..... soms shall Un .....

*rall. e cres.*

soft ..... er pur ..... er clime.  
 fold ..... their hues in heaven.

*D.C. al. S.*



