

Connecticut College

Digital Commons @ Connecticut College

Historic Sheet Music Collection

Greer Music Library

1920

Pale Moon

Frederic Knight Logan

Jesse G. M. Glick

Follow this and additional works at: <https://digitalcommons.conncoll.edu/sheetmusic>

Recommended Citation

Logan, Frederic Knight and Glick, Jesse G. M., "Pale Moon" (1920). *Historic Sheet Music Collection*. 1171. <https://digitalcommons.conncoll.edu/sheetmusic/1171>

This Score is brought to you for free and open access by the Greer Music Library at Digital Commons @ Connecticut College. It has been accepted for inclusion in Historic Sheet Music Collection by an authorized administrator of Digital Commons @ Connecticut College. For more information, please contact bpancier@conncoll.edu.

The views expressed in this paper are solely those of the author.

2-15-37 Berlin

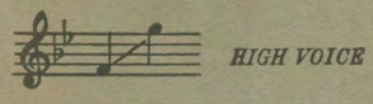
G. V. Pettigrew

PALE MOON

AN INDIAN LOVE SONG

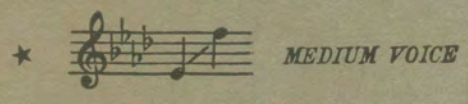
LYRIC BY
JESSE G. M. GLICK

MUSIC BY
FREDERIC KNIGHT LOGAN

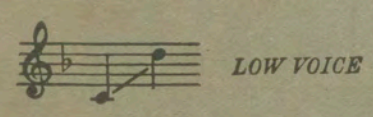


HIGH VOICE

60



MEDIUM VOICE



LOW VOICE



FORSTER
MUSIC PUBLISHER INC.
736 SO. MICHIGAN AVE.
CHICAGO

VAN DOORN
MORGAN

COME INTO MY HEART

SONG

LYRIC BY
GUY WELLINGTON

MUSIC BY
FREDERIC KNIGHT LOGAN

OPUS 99

Price 40 Cents

Come Into My Heart

WITHOUT doubt the best heart-song in years. An instantaneous hit, with a lyric from the clever pen of Guy Wellington, to an alluring melody— followed by a haunting, slow waltz refrain. This is one of Frederic Knight Logan's most beautiful numbers, and is destined to achieve the same wonderful popularity as did his famous folk-song composition, "The Missouri Waltz". It is published in three keys, and is suitable for teaching, and for all occasions.

High Medium Low

Moderato
With much expression

Part of Verse

rit. *a tempo*

I whis-per your name in the hush of the dawn And dream of you all thru the
I wan-der a - lone thru the long si-lent night And fol-low the moon's sil-ver

p *rit.* *a tempo*

Refrain

Slowly *rit.* *Slowly*

Come in - to my heart _____ Come nev - er to

p *Slowly* *a tempo* *Slowly*

part _____ With plead-ing lips and lone - ly arms I wait for the

rit.

GET IT FROM YOUR MUSIC DEALER. PRICE 40c PER COPY. IF FOR ANY REASON HE
WON'T SUPPLY YOU MAIL AMOUNT STATED DIRECT TO THE PUBLISHER

FORSTER MUSIC PUBLISHER, Inc., 235 South Wabash Avenue, CHICAGO, ILL.

SEND 3c STAMP FOR BEAUTIFUL ILLUSTRATED THEMATIC CATALOG.

*Return
Old folks
10-24-50
Pearson House*

Dedicated to, and sung by

MISS ROSA RAISA

PALE MOON

An Indian Love Song

Lyric by
JESSE G.M. GLICK

Music by
FREDERIC KNIGHT LOGAN

HIGH VOICE

LOW VOICE

MEDIUM VOICE

Mournfully

Indian Flute

p *accel.*

rit. *a tempo* *R.H.* *L.H.* *L.H. rit* *Sweetly* *a tempo*

Use two Pedals

Plaintively

Out of my lodge at ev-en-tide

Ped * *Ped* * *Ped* * *Ped* *

Copyright MCMXX by Forster Music Pub., Inc., Chicago, Ill.

International copyright secured

All rights reserved

'Mong the sob - bing pine _____ Foot - steps ech - o

Ped * *Ped* * *Ped* * *Ped* * *Ped* * *Ped* *

Mysterious

by my side, A spir-it face, - a sign. _____

rit.

Ped * *Ped* * *Ped* * *Ped* *Ped*

Twi - light skies are

a tempo _____ *L.H.*

Ped * *Ped* * *Ped* * *Ped* * *Ped* *

all a-light A - cross the deep la - goon

L.H.

Tenderly * *Ted* * *Ted* * *Ted* * *Ted* * *Ted* * *Sweetly*

A face is break - ing thru the night My In - dian maid, Pale

rit. pp

Moon _____ *Tenderly with singing tone*

p

Gradually broader *f* *Speak*

CEGBc.

Pale Moon 5 Med. * *Ted* * *Ted* * *Ted* * *Ted* * *Ted* *

ff Very dramatic and slow

to thy love for - sak - en, Thy spir - it man - tle

ff *R.H.* *R.H.* *ff*

With decision, Very broad

throw — Ere thou the great white dawn a - wak - en, And

R.H. *R.H.* *R.H.*

Very legato

to the sea thou swing-est low —

Echo.

p *pp* *f* *accel.*

rit. *a tempo* *rit.*

R.H. *R.H.* *R.H.* *R.H.*

L.H. *L.H.*

Softly and sweetly

Then to the West I'll fol - low A - cross the deep la -

a tempo pp

Soft Pedal

Decisive accel.

goon Swift as a fly - ing ar - row,

rit.

accel.

rit.

p Slower

With much feeling

Add loud Pedal

To thy a-bode, Pale Moon,

Very slow and soft pp (As an echo)

Pale Moon

Lento

p pp p pp ppp

Soft Ped.

FREDERIC KNIGHT LOGAN COMPOSITIONS

SONGS OF CUPID

A group of seven "love songs," admirably chosen in the author's best style. Each song is a gem in itself. May be adapted for concert, wedding, teaching, etc. Perfectly phrased and with charming lyric settings.

PRICE COMPLETE \$1.25

SONG MINIATURES

A booklet containing three songs — "Were I a Bird," "Phyllis" and "Lift Thine Eyes." Had Mr. Logan written but the bird song of this group—"Lift Thine Eyes," he would have stamped himself as a composer of remarkable merit. This song has been used by most all of the greatest singers of the concert stage, and in each instance, received nothing short of an ovation — being termed as one of the greatest "climax" songs ever written.

PRICE COMPLETE \$0.75

IN A BRAHMIN GARDEN

A SONG CYCLE.
Four Delightful East Indian Songs for Concert and Teaching.
Words by VIRGINIA K. LOGAN

- | | |
|---------------------------------------|--------------|
| 1. <i>Lol' Tis the Hour</i> | High Voice |
| 2. <i>Fair Radha</i> | Medium Voice |
| 3. <i>Ganges Boat Song</i> | High Voice |
| 4. <i>Krishna's Lament</i> | Medium Voice |

IN A BRAHMIN GARDEN

"Neath the shady palms, where jasmine white,
And lotus sweetly blow,
Is a garden fair, with perfume rare,
By Ganges' Sacred flow."

Thus, the author describes the abode of Krishna, a young Hindoo Prince.

Therein, stands a Temple, dedicated to the God Brahma; the marble dome of this Sacred Sanctuary, reflects the first flame of light from the morning's sun as it bursts into sudden glory, as by magic.

At this hour, we find the Hindoos assembled, "offering prayer to Brahma for aid, should famine e'er descend."

Krishna, becoming enamored with the beauty and grace of Radha, a dancing girl of the Temple, beseeches her to forsake the garden and fly with him. Radha, singing gaily, heeds him not, for it was ordained unlawful to love one of higher caste; but suddenly her heart yields to his entreaties, and while the chime from a distant Minaret floats softly upon the perfumed breezes of the night, they glide down the cool stream, to "Realms of Bliss."

Famine and Plague invade the land, and fair Radha dies a victim. Krishna, heartbroken, and now an out-cast, keeps vigil over his "jasmine fair," until prostrate by anguish and despair, he falls across her lifeless form, while o'er the arid land, the solemn chant of the Brahmins' is heard, still invoking a prayer for aid.

PRICE COMPLETE \$1.00

THE PIPES OF PAN

A PASTORAL SUITE FOR THE PIANOFORTE
Especially Adapted for Concert Use and Phrased and Fingered for Teaching Purposes.

- | | |
|---------------------------------|-----------|
| 1. "A Sylvan Glade" | Grade IV |
| 2. "Shepherd's Dance" | Grade III |
| 3. "Phyllis" | Grade III |
| 4. "Endymion" | Grade IV |
| 5. "Nymphs and Fauns" | Grade V |

PRICE COMPLETE \$1.25

Written in the author's well known charming style, combining the descriptive with a deep glow of melodic coloring. Opening with "A Sylvan Glade," resplendent in moonlight, and reverberating the weird notes of the pipes of Pan—followed by the graceful sway of the "Shepherd's Dance"—the dainty love song, "Phyllis," beautiful in its simplicity—"Endymion," a nocturne of rare poetic flavor, and closing with "Nymphs and Fauns," which embraces the seductive valse of the water-nymphs, and the sprightly revels of the fauns, who, when warned by chanticleer of the approach of dawn, hie away, forming a brilliant finale to a most attractive cycle for the piano.

FOUR CASTILIAN SKETCHES

Suite Espagnole
Opus 94

By Frederic Knight Logan

PRICE COMPLETE - \$1.25

- I—At Twilight
- II—Plaza Dance
- III—Neath a Balcony (Serenade)
- IV—La Fiesta (Castanet Dance)

A wonderful setting of four Spanish sketches for the piano, written in this young American composer's most artistic and descriptive manner, abounding in the local color and characteristics of the music of Old Castile.

The opening number "AT TWILIGHT," introduces the weird strains of a distant lute, whose languorous melody is wafted on the soft evening breeze, and soon augmented by the strains of a group of musicians, who wander from their housetops to the Square below.

Joined by a gay crowd of merry-makers, they indulge in a spirited "PLAZA DANCE."

Through the pale moonlight, from sweet scented orange groves, a lover's guitar is heard, as "NEATH A BALCONY" he softly pleads to his fair one. This exquisite Serenade cannot fail to elicit the admiration of the most fastidious artist.

The fourth number, "LA FIESTA," depicts a night of joyous Castilian revelry. To the fanfare of trumpet and the tinkle of tambourine and triangle, the motley crowd lithely sway to the hypnotic rhythm of the Castanet Dance. With dark eyes flashing 'neath sombrero and mantilla, to the accelerated tempo of the wild finale, a fitting climax to this Suite is effected.

"FOUR CASTILIAN SKETCHES" should be included on every recital and concert program. It is carefully fingered, phrased and pedaled for teaching.

FORSTER MUSIC PUBLISHER, Inc. 235 SOUTH WABASH AVE.
CHICAGO, ILLINOIS