

Connecticut College

## Digital Commons @ Connecticut College

---

Historic Sheet Music Collection

Greer Music Library

---

1912

### The Rosary

Robert Cameron Rogers

Etherlbert Nevin

Follow this and additional works at: <https://digitalcommons.conncoll.edu/sheetmusic>

---

#### Recommended Citation

Rogers, Robert Cameron and Nevin, Etherlbert, "The Rosary" (1912). *Historic Sheet Music Collection*. 1218.

<https://digitalcommons.conncoll.edu/sheetmusic/1218>

This Score is brought to you for free and open access by the Greer Music Library at Digital Commons @ Connecticut College. It has been accepted for inclusion in Historic Sheet Music Collection by an authorized administrator of Digital Commons @ Connecticut College. For more information, please contact [bpancier@conncoll.edu](mailto:bpancier@conncoll.edu).

The views expressed in this paper are solely those of the author.



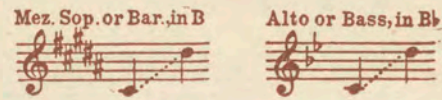
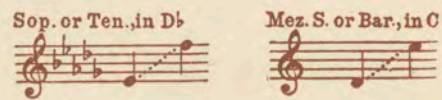
# THE ROSARY

BY  
ETHELBERT NEVIN

WORDS BY  
ROBERT CAMERON ROGERS

## VOCAL EDITIONS

Song with Piano Accompaniment (Six Keys)



- Edition with English, French & German words (6 Keys) .60
- Edition with French & English words (F, Db, C, Bb) .60
- Edition with German & English words (Eb, Db, C, Bb) .60
- Edition with Italian & English words (Db) .60
- Edition with Spanish & English words (6 Keys) .60
- Edition with Esperanto & Eng. words (Db) .60
- Edition with Violin obbligato (Eb, C) .60
- Song with Guitar Accompaniment .50
- Duet for Sop. and Alto, in Eb .60
- Duet for Sop. and Ten., in Eb .60
- Duet for Mez. Sop. and Bar., in C .60
- Quartet for Mixed Voices .15
- Quartet for Men's Voices .15
- Quartet for Women's Voices .15
- THE HOLY HOUR—Edition with Sacred words for Church use (Eb, C, Bb) .60
- THE HOLY HOUR—Quartet for Mixed Vo. .15
- THE HOLY HOUR—Quartet for Men's Vo. .15
- THE HOLY HOUR—Quartet for Women's Voices .15

## INSTRUMENTAL ARRANGEMENTS

- Piano Solo, in "Book of 7 Melodies" .75
- Piano Solo, arr. by B. Whelpley .50
- Piano Solo, arr. by Marschal-Loepke (simplified) .40
- Piano Four-Hands, arr. by Brower-Whelpley .60
- Two Pianos Four-Hands, arr. by Hull-Howe .50
- Piano Six-Hands, arr. by B. Treharne .50
- Organ Solo, arr. by R. Goss-Custard .60
- Harp (with organ *ad lib.*), arr. by A. F. Pinto .75
- Violin and Piano, arr. by Kreisler .75
- Violin and Piano, arr. by G. Strube .60
- Violin and Piano (simplified), arr. by P. Th. Miersch .60
- Violoncello and Piano .60
- Trio, Violin, 'Cello and Piano, arr. by Hugo Riesenfeld .75
- Cornet and Piano, arr. by H. G. Blaisdell .60
- C Melody Saxophone and Piano. Trans. by J. Gurewicz .75
- Eb (Alto) Saxophone and Piano. Trans. by J. Gurewicz .75
- Orchestra (Cornet Solo), arr. by G. Strube 1.00
- Song Orchestration (Eb, Db, or Bb) 1.00
- Band (Cornet Solo) 1.00
- Ukulele, arr. by C. S. De Lano .50
- Steel Guitar, arr. by C. S. De Lano .60
- Mandolin and Piano .50
- 2 Mandolins and Piano .70
- Mandolin and Guitar .40
- 2 Mandolins and Guitar .70
- Mandolin Orchestra, arr. by H. F. Odell:
  - 1st Mandolin .20
  - 2nd Mandolin .20
  - 3rd Mandolin .20
  - Tenor-Mandola .20
  - Mando-'Cello .20
  - Mando-Bass .20
  - Banjo Obbligato .20
  - Guitar Accompaniment .20
  - Piano Accompaniment .30
  - Flute .20
  - Violoncello .20
- Trombone and Piano, arr. by M. Alloo .60
- Guitar Solo .40
- Flute and Piano .60
- Piano Accordion, arr. by Pietro Deiro .50

THE BOSTON MUSIC COMPANY: BOSTON: MASSACHUSETTS







# THE ROSARY

## LE ROSAIRE DER ROSENKRANZ

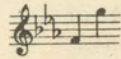
ROBERT CAMERON ROGERS

French version by Mme. C. Eschig

German version by Carl Engel

(Soprano or Tenor)

ETHELBERT NEVIN



Lento ed intimo

VOICE

The hours I spent with thee, dear heart,  
Comme un ro - sai - re sont pour moi  
Oft denk' mit Weh - mut ich zu - rück

PIANO

*Ad. Ad. \**

Are as a string of pearls to me; I count them o - ver ev - ry  
Les heu - res qui nous u - nis - saient, Tou - jours je les comp - te pen -  
Der hol - den Stun - den, reich an Glück, Die, strah - lend in der jun - gen

*Ad. Ad. \* Ad. \**

*poco rall.*

one a - part, My ro - sa - ry, my ro - sa - ry!  
sant à toi, Beau - coup trop vite el - les pas - saient!  
Lie - be Glanz, Den Per - len gleich am Ro - sen - kranz.

*poco rall.*

*dolce*

*L.H.*

*Ad. \**

Copyright, 1898, by G. Schirmer, Jr.

For all countries  
Depositado conforme a la ley de Republica Mexicana  
en el año 1912 por The Boston Music Company.

Printed in U. S. A.

B. M. Co. 782 C

When performing and programming this number on the air, kindly give credit to THE BOSTON MUSIC COMPANY



*a tempo*  
*mp*

Each hour a pearl, each pearl a pray'r To still a heart in ab-sence  
*U - ne pri - ère à cha - que grain* Pour cal-mer mon cœur aux a -  
 Wie sie, so reiht der Stun-den Zahl, Ein lich-ter Kranz, sich je - des -

*a tempo*  
*mp*

*Red. Red. \**

*molto largamente*

wrung: I tell each bead un - to the end, And there a  
*bois, Jar - rive ain - si jus - qu'à la fin, Mais là pend*  
 mal Zur Ket - te von Ge - be - ten fromm... Bis ich zum

*molto largamente*  
*dolce*

*Red. Red. \* Red. \**

*f* *a tempo* *p*

cross is - hung! O mem - o - ries that bless and  
*u - ne croix! O doux mo - ments si pleins d'é -*  
 Kreu - ze komm'! Im Geist ent - schwund' - ner Se - lig -

*a tempo*  
*f* *quasi arpeggio*  
*p vibrato*  
*dolcissimo*

*Red. Red. P. Red. \**



burn!  
moi,  
keit

O bar-ren gain  
A vous tou-jours  
Küss' ich sie all;

and bit - ter loss!  
je dois pen - ser,  
in stum-mem Leid,

*mf* *sempre cresc.* *f*

*patetico*

*mf* *sempre cresc.* *f*

*mf* *sempre cresc.* *f*

I kiss each bead, and strive at last to learn To kiss the  
Jem-bras - se cha - que grain jus - qu'à la croix, Tà - chant d'ap -  
Bis end - lich mir der Schmerz der letz - ten Stund' Drängt, O Ge -

*mf* *sempre cresc.* *f*

*mf* *sempre cresc.* *f*

cross, sweet - heart! To kiss the cross.  
*prendre* en - fin à l'em - bras - ser.  
lieb - - - ter), das Kreuz zum Mund.

*f* *poco accel.* *ff* *Largo* *pp*

*f* *pp*



# OTHER NOTABLE COMPOSITIONS

## By ETHELBERT NEVIN



"Nevin's songs have lyrical contour, lyrical impulses; they come forward in graceful curves like waves, and when they reach their destination, they rise to their climax and make a beautiful end. . . . If you feel in a man's work a quality, which you can only define by making an adjective of his name, then his work has that individuality without which no genius—however infinite his pains—could hold his own through the rush of time. Yes, I think we may call Ethelbert Nevin a great composer of great songs."

—RUPERT HUGHES—

### Nevin Songs

<b>Deep in a Rose's Glowing Heart</b>	
<i>with acc. of piano, violin and 'cello</i>	
<i>High, A; Medium, G</i>	.60
<i>with piano acc., same keys</i>	.50
<b>One Spring Morning (Frühlingsmorgen)</b>	
<i>with acc. of piano, violin and 'cello</i>	
<i>High, Em.; Medium, Dm. (e. &amp; g.)</i>	.75
<i>with piano acc., same keys</i>	.75
<b>Doris</b>	
<i>with acc. of piano, violin and 'cello</i>	
<i>High, F; Medium, Eb</i>	.90
<i>with piano acc. High, F; Medium D (e. &amp; g.)</i>	.60
<b>Little Boy Blue</b>	
<i>High, B<math>\flat</math>; Medium, Ab</i>	.60
<b>At Twilight</b>	
<i>High, G; Medium, F</i>	.60
<b>Time Enough (Rechte Zeit)</b>	
<i>High, B<math>\flat</math>; Medium, Ab; Low, G<math>\flat</math> (e. &amp; g.)</i>	.50
<b>A Life Lesson ("There, little girl, don't cry")</b>	
<i>High, B<math>\flat</math>; Medium, G</i>	.60
<b>O That We Two Were Maying</b>	
<i>with piano acc. High, A; Low, F</i>	.60
<i>duet with piano acc. Sop. and Tenor, Ab</i>	
<i>Sop. and Alto, Ab</i>	
<i>Alto and Bass, F Each</i>	.75
<b>Narcissus</b>	
<i>voice and piano High, Ab; Low, F</i>	.60

### Organ Editions

Love Song (Arr. by Edward Shippen Barnes)	.60
Slumber Song (Arr. by E. H. Lemare)	.60
At Twilight (Arr. by A. H. Ryder)	.60
Ophelia (Arr. by P. J. Mansfield)	.60
Narcissus (Arr. by R. Goss-Custard)	.60
A Shepherd's Tale (Arr. by P. J. Mansfield)	.60
Misericordia (Arr. by P. J. Mansfield)	.60
The Rosary (Arr. by R. Goss-Custard)	.60
Wedding Prelude and Intermezzo	.60
Organ Folio (9 pieces)	Complete 1.00

### Nevin Piano Pieces

<b>SKETCH BOOK (Songs and Piano Pieces)</b>	Complete	1.25
1. Gavotte		.50
2. Love Song		.50
3. Berceuse		.50
4. Serenata		.60
5. Valse Rhapsodie		.60
<b>WATER SCENES</b>	Complete	1.25
1. Dragon Fly		.60
2. Ophelia		.60
3. Water Nymph		.60
4. Narcissus		.60
5. Barcarolle		.75
<b>IN ARCADY</b>	Complete	1.25
1. A Shepherd's Tale		.60
2. Shepherds All and Maidens Fair		.75
3. Lullabye		.60
4. Tournament		.75
<b>MAY IN TUSCANY (Maggio in Toscano)</b>	Complete	1.25
1. Arlecchino		.60
2. Notturmo (in Boccaccio's Villa)		.75
3. Barchetta		.60
4. Misericordia		.60
5. Il Rusignuolo (In My Neighbor's Garden)		.75
6. La Pastorella (Montepiano)		.60
<b>MELODIES (Transcriptions)</b>	Complete	1.25
1. One Spring Morning	2. At Twilight	
3. Tell Me ( <i>Dites-moi</i> )	4. The Rosary	
5. Time Enough ( <i>Rechte Zeit</i> )	6. The Merry Lark	
7. Oh, That We Two Were Maying!		
<b>EGYPTIAN LOVE SONG</b>		.60

### Violin and Piano

Love Song	.60
Autumn	.60
Melody	.60
Habanera	.75
Narcissus (Arr. by G. Strube)	.60
Narcissus (Simplified arr. by A. Moffat)	.60
Barcarolle	.75
Lullabye	.60
Romance (Transcr. by C. Engel)	.75
Slumber Song (op. posth.)	.60
The Rosary (Arr. by Fritz Kreisler)	.75
The Rosary (Arr. by G. Strube)	.60
The Rosary (Simplified arr. by P. Th. Miersch)	.60

### Orchestra Editions

<b>POPULAR CONCERT</b>	
Library Number	
1. O That We Two Were Maying	} Small Orch. .80
7. Country Dance	
8. In Arcady	
9. Narcissus	
11. Romance	
12. Barchetta	} Full Orch. 1.10
32. Love Song	
52. { Song of Love The Old Mill	

The Boston Music Company - Boston, Mass.