

Connecticut College

## Digital Commons @ Connecticut College

---

Historic Sheet Music Collection

Greer Music Library

---

1920

### Shores of Old California

Unknown

Follow this and additional works at: <https://digitalcommons.conncoll.edu/sheetmusic>

---

#### Recommended Citation

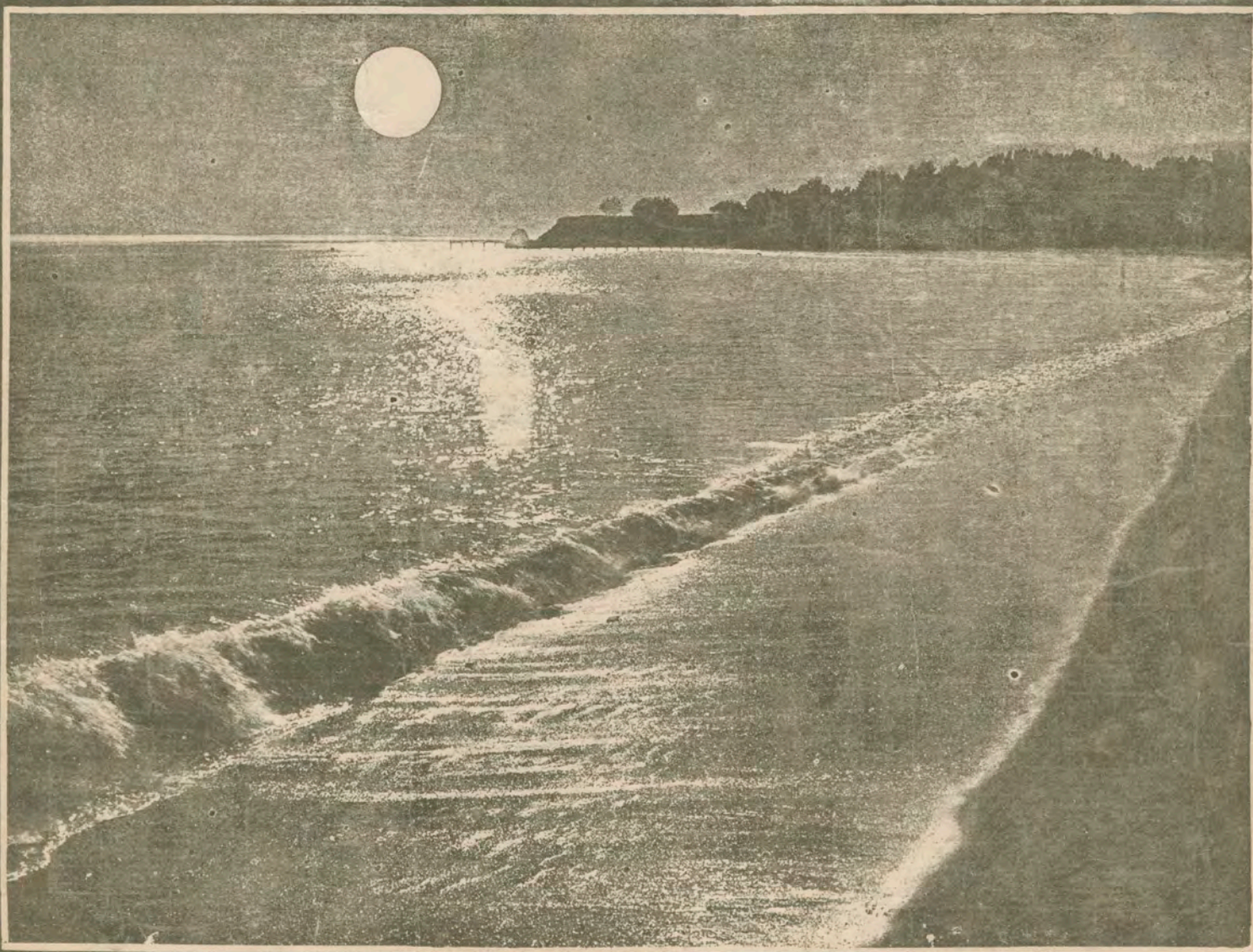
Unknown, "Shores of Old California" (1920). *Historic Sheet Music Collection*. 1256.  
<https://digitalcommons.conncoll.edu/sheetmusic/1256>

This Score is brought to you for free and open access by the Greer Music Library at Digital Commons @ Connecticut College. It has been accepted for inclusion in Historic Sheet Music Collection by an authorized administrator of Digital Commons @ Connecticut College. For more information, please contact [bpancier@conncoll.edu](mailto:bpancier@conncoll.edu).

The views expressed in this paper are solely those of the author.

Shores of old  
**California**

*Irene Mentan*



# "Shores Of Old California"

Moderato

Piano

Musical notation for the piano introduction, featuring a treble and bass clef with a 3/4 time signature. The music is in B-flat major and includes dynamic markings such as *p*, *mf*, and *p*.

Gold en Gate, I have been dream-ing of you,  
 Gold en Gate, I miss your moun-tains so green,

Musical notation for the first vocal line, including piano accompaniment with a *u tempo* marking.

Of your won-d'rous land, Of your sil-ver sand.  
 All your won-d'rous scenes, I see in my dreams.

Musical notation for the second vocal line, including piano accompaniment.

Gold en Gate, You're like an old friend that's true, I  
 Gold en Gate, You bring back scenes of child-hood, Oh,

Musical notation for the third vocal line, including piano accompaniment with a *mf* marking.

miss your dear old shores, I miss your op-en doors;  
 how I long for you, You make me feel so blue;

Musical notation for the fourth vocal line, including piano accompaniment with a *rall.* marking.

Copyright MCMXX

All Rights Reserved

Refrain *Dreamily*

Shores of old Cal - i - for - nia, How I miss

*mf a tempo*

you, Miss your waves of blue,

L.H. L.H.

And your ros - es too, Flow - ers sweet dont sur -

*mf*

- round me, As in - days of yore, South - ern shores of

L.H. *cresc.*

old Cal - i - for - nia I'm com - ing back once more.

*f* *mf* *rall.* *p* *p* *mf* *p*

1 2

