

Connecticut College

Digital Commons @ Connecticut College

Historic Sheet Music Collection

Greer Music Library

1902

Sing Me To Sleep

Edwin Greene

Follow this and additional works at: <https://digitalcommons.conncoll.edu/sheetmusic>

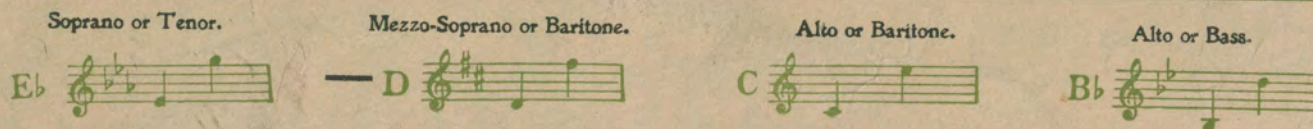
Recommended Citation

Greene, Edwin, "Sing Me To Sleep" (1902). *Historic Sheet Music Collection*. 1265.
<https://digitalcommons.conncoll.edu/sheetmusic/1265>

This Score is brought to you for free and open access by the Greer Music Library at Digital Commons @ Connecticut College. It has been accepted for inclusion in Historic Sheet Music Collection by an authorized administrator of Digital Commons @ Connecticut College. For more information, please contact bpancier@conncoll.edu.

The views expressed in this paper are solely those of the author.

EDWIN GREENE



Sing Me to Sleep

(Sing mir dein Lied)

Vocal Arrangements

Song with Guitar Accompaniment (key of C only)	.60
Song with Orchestra Accompaniment, key of E flat	.80
Song with Orchestra Accompaniment, key of C	.80
Vocal Duet, Soprano and Tenor, E flat	.75
Vocal Duet, Soprano and Alto, D	.75
Vocal Duet, Alto and Bass, C	.75

German and English Words

Violin or 'Cello ad lib.

Words by Clifton Bingham

75 cents

Instrumental Arrangements

Waltz for Piano (introducing "Voices of the Past")	.75
Violin and Piano (arranged from the song)	.75
Waltz, Orchestra and Piano	.80
Waltz, Small Orchestra and Piano	.60
Cornet Solo and Orchestra (Concert form)	.80
Cornet Solo and Small Orchestra (Concert form)	.60

SONGS BY EDWIN GREENE

HOME TO ATHLONE	60	THE BEAUTIFUL LAND OF NOD	60
Soprano or Tenor, B flat; Mezzo-Soprano or Baritone, A flat; Alto or Baritone, G; Alto or Bass, F		Soprano or Tenor, G; Mezzo-Soprano or Baritone, F; Alto or Baritone, E flat; Alto or Bass, D Violin or 'Cello ad lib.	
I REMEMBER, I REMEMBER	60	THE MUSIC THAT CAME WITH MAY	60
Soprano or Tenor, A; Mezzo-Soprano or Baritone, G; Alto or Baritone, F; Alto or Bass, E flat		Soprano or Tenor, B flat; Mezzo-Soprano or Baritone, A flat; Alto or Baritone, G; Alto or Bass, F	
IF SHE BUT KNEW	60	THERE IS A GARDEN	60
Soprano or Tenor, G; Mezzo-Soprano or Baritone, F; Alto or Baritone, E flat; Alto or Bass, D Violin or 'Cello ad lib.		Soprano or Tenor, G; Mezzo-Soprano or Baritone, F; Alto or Baritone, E flat; Alto or Bass, D	
SING ME TO SLEEP	75	THERE LET ME REST	60
Soprano or Tenor, E flat; Mezzo-Soprano or Baritone, D; Alto or Baritone, C; Alto or Bass, B flat Violin or 'Cello ad lib.		Soprano or Tenor, F; Mezzo-Soprano or Baritone, E flat Alto or Baritone, D; Alto or Bass, C Violin Obligato ad lib.	
SPRINGTIDE	60	VOICES OF THE PAST	60
Soprano or Tenor, A; Mezzo-Soprano or Baritone, G; Alto or Baritone, F; Alto or Bass, E flat		Soprano or Tenor, F; Mezzo-Soprano or Baritone, E flat; Alto or Baritone, D; Alto or Bass, C Violin or 'Cello ad lib. Song with Guitar Accompaniment	
SWEET EILEEN	60		

VOCAL DUETS BY EDWIN GREENE

SING ME TO SLEEP	75	THERE LET ME REST	60
Soprano and Tenor, E flat Soprano and Alto, D Alto and Bass, C		Soprano and Alto, F Mezzo-Soprano and Baritone, D	
		VOICES OF THE PAST	60
		Soprano and Alto, E flat Mezzo-Soprano and Baritone, D	

G. Schirmer, Jr., **THE BOSTON MUSIC CO.**, Boston, Mass.

Sole Agents for PHILLIPS & PAGE, Publishers, London

Violin acct con sordino ad lib.

Sing me to Sleep.


(Sing mir dein Lied.)


Frida Wilhelmi.

Words by
Clifton Bingham.

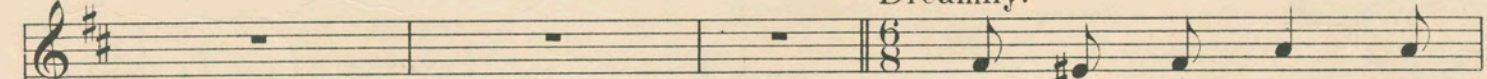
Music by
Edwin Greene.

Andantino affettuoso.


Voice. 

Piano. 

Dreamily.

Voice. 

Sing me to sleep, the
Sing mir dein Lied im

Piano. 

Voice. 

shad - ows fall, Let me for - get the world and all.
Däm - mer - schein, gieb mir Ver - ges - sen al - ler Pein.

Piano. 

Copyright, MCMII, by Phillips & Page. U.S.A.

p (as a chant)

Tired is my heart, the day is long, Would it were come to
 Lang ist der Tag, mein Herz so schwer, wollt', dass mein Leid vor -

p *colla voce*

accel.

e - ven - song. Sing me to sleep, your hand in mine, Our
 ü - ber wär. Sing mir dein Lied, reich mir die Hand und

accel. *cresc.*

ped. * *ped.* * *ped.* * *ped.* *

rit. e dimin. *p* *dolciss.*

fin - gers as in prayer en - twine; On - ly your voice, love,
 führ' mich sanft ins Träu - me - land. Wenn auch mein Au - ge

rit. *p* *dolciss.*

ped. * *ped.* *

accel. *rall.*

let me hear, Sing - ing to tell me you are near.
 dich nicht sieht, Lieb, du bist nah, ich hör' dein Lied.

accel. *rall.* *rit.* *p*

Tenderly.

Love, I am lone - ly, Years are so long,
Nichts ist ge - blie - ben, Nacht ist so lang,

p

ped. * *ped.* * *ped.* * *ped.* *

I want you on - - ly, You and your song;
lass mir dein Lie - - ben und dei - nen Sang.

ped. * *ped.* * *ped.* * *ped.* *

cresc. *dimin.*
 Dark is life's shore, love, Night, is so deep,
Wund ist mein Herz, Lieb, schwer mein Ge - müt,

cresc. *dimin.*

ped. * *ped.* * *ped.* *

cresc. *rit.* *pp very slowly*
 Leave me no more, — love, Sing me to sleep.
bleib du bei mir, — Lieb, sing mir dein Lied.

rit. *pp colla voce*

ped. *

p a tempo

Ped. * Ped. * Ped. *

Dreamily.

Sing me to sleep, love,
Sing mir dein Lied; von

dimin. *p colla voce*

you a - lone, Seem to be left me for mine own,
al - lem Glück bliebst du mir, Lieb, al - lein zu - rück,

p (as a chant)

Hap - ly my heart will know no pain, When I a - wake from sleep a - gain.
Schliesst mir der Schlaf die Au - gen zu, bringt er der mü - den See - le Ruh,

p colla voce

accel.

Sing me to sleep and let me rest, Of all the world I
 Sing mir dein Lied; ich lieb' al - lein von Al - len dich nur,

accel. cresc.

rit. * *rit.* * *rit.* * *rit.* * *rit.* *

rit. e dimin. *p dolceiss.*

love you best. No - thing is faith - ful, no - thing true,
 sing mich ein. Falsch ist und trüg' - risch Al - les hier,

rit. *p dolceiss.*

rall. *rall.*

In Heav'n or earth, but God and you.
 Gott nur und du sind treu zu mir.

rall. *rit.* *p*

Tenderly.

Love, I am lone - ly, Years are so long,
 Nichts ist ge - blie - ben, Nacht ist so lang.

p

rit. * *rit.* * *rit.* *

Sing me to Sleep.

(Sing mir dein Lied.)

Violin or Violoncello.

con sordino

Andantino affettuoso.

Edwin Greene.

p *dim.*

Dreamily *(as a chant)*

pp

accel. cre - scen - do rit. accel. rall.

dolcissimo

Teneramente.

p

colla voce molto rit.

p

Dreamily

dim. *pp*

(as a chant) accel. cre - scen - do

rit. accel. rall. Teneramente.

dolcissimo *p*

colla voce molto rit.

rit. *pp*

FOUR MELODIOUS AND ATTRACTIVE PIANO PIECES BY TALENTED COMPOSERS.

Complete Copies may be had at any Music Shop, or from the Publishers.

G. SCHIRMER, Jr.

THE BOSTON MUSIC COMPANY.

BOSTON, MASS.

Remembrance. 75c
Romance. Orchestra Parts 60c

Maurice Telma.

Andantino con molto espressione.

Piano. *p tranquillo*

Copyright U. S. A., 1905, by J. H. Larway.

Melody in G Flat. 50c

Charles Wakefield Cadman.

Moderato cantabile.

Piano. *cantando*
con Pedale

Copyright, 1905, by G. Schirmer, Jr.,

for all countries.

Narcissus. 60c
Orchestra Parts 60c

Ethelbert Nevin.
Op. 13, N94.

Andante con moto.

Piano. *p cantando*
m.d.

Copyright, 1899, by G. Schirmer, Jr.,

for all countries.

The Rosary.

Not published separately.
In Collection of seven "Melodies"
Price, complete, \$1.25n

Ethelbert Nevin.

Moderato con moto.

Piano. *mf*

Copyright, 1900, by G. Schirmer, Jr.,

for all countries.

THE PIANIST'S GUIDE.

An attractive booklet, containing a graded and classified list of recent publications, useful alike to teachers, professionals and amateurs. Sent to any address free of charge.

N. Gwendolyn Ferrill

SING ME TO SLEEP

(Sing mir dein Lied)

(Fais-moi rêver)

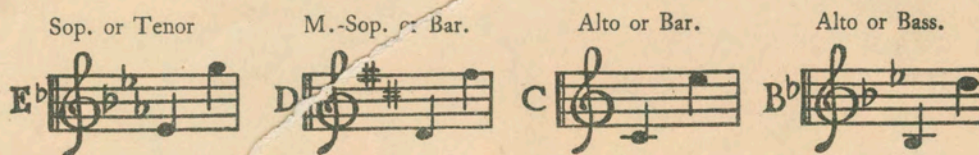
WORDS BY

CLIFTON BINGHAM

MUSIC BY

EWGIN GREENE

(Violin or 'Cello ad lib.)



75 cents

Vocal Arrangements

Song with French Words only,	Key of C	.75
“ “ Guitar Accompaniment,	“ “ C	.60
“ “ Orchestra,	“ “ E ^b	.80
“ “ Orchestra,	“ “ C	.80
Vocal Duet, Soprano and Tenor,	“ “ E ^b	.75
“ “ Soprano and Alto,	“ “ D	.75
“ “ Alto and Bass,	“ “ C	.75
Song with Italian Words	“ “ C	.75
“ “ Esperanto Words	“ “ C	.75

Instrumental Arrangements

Waltz for Piano (arranged by P. Deroy)	.75
Piano Solo by Fabian Rose	.60
Violin and Piano (arranged from the Song)	.75
Waltz, Orchestra and Piano	.80
Waltz, Small Orchestra and Piano	.60
Cornet Solo and Orchestra (Concert form)	.80
Cornet Solo and Small Orchestra (Concert form)	.60
Violoncello and Piano	.75
Banjo and Piano	.75

SOLE AGENTS

G. Schirmer



26-28 West Street

Boston, Massachusetts

NEW YORK: G. SCHIRMER

BENJ. CURTIS & CO.
113 N. WASHINGTON ST.
NEW YORK, N. Y.

Violin acct con sordino ad lib.

Sing me to Sleep.

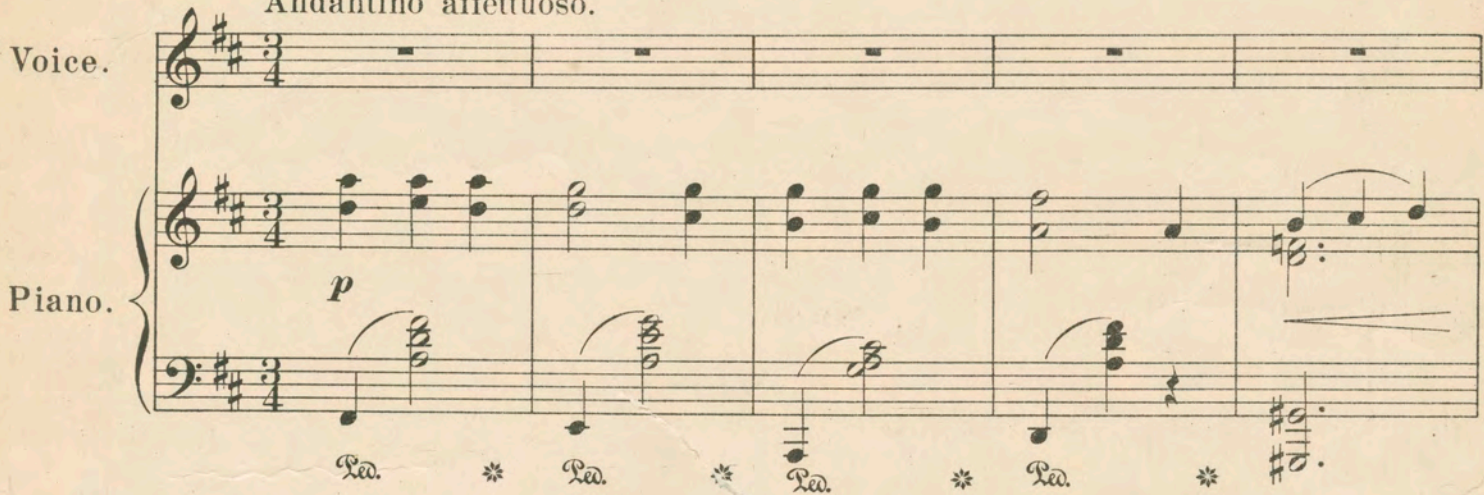
(Sing mir dein Lied.)

Frida Wilhelmi.

Words by
Clifton Bingham.

Music by
Edwin Greene.

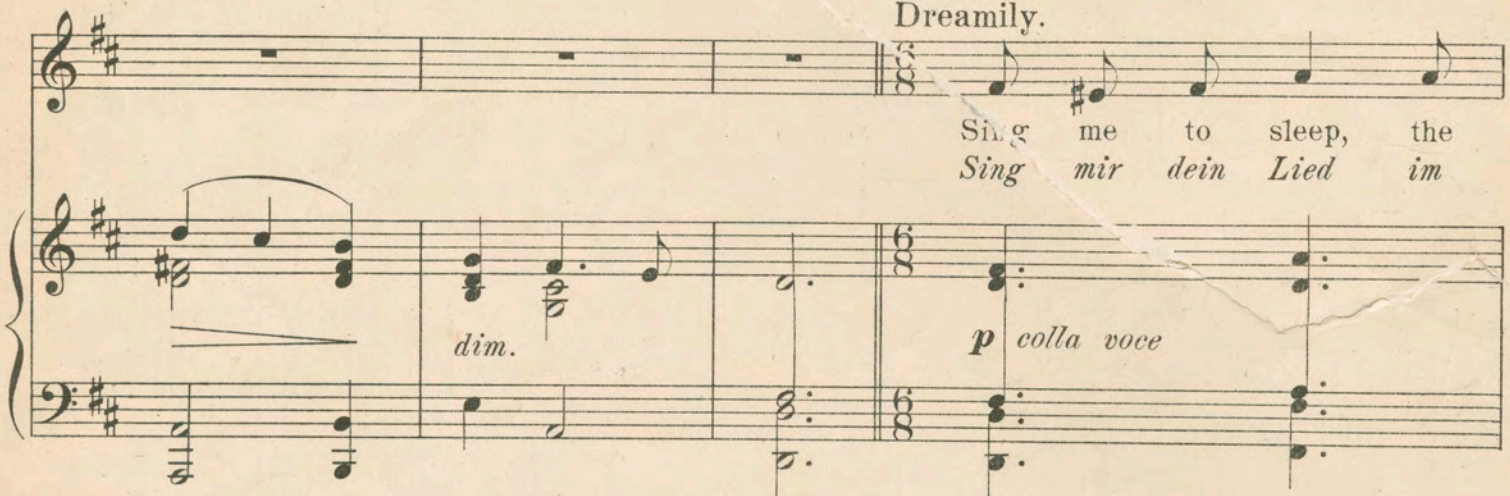
Andantino affettuoso.

Voice. 

Piano. *p*

*La. * La. * La. * La. **

Dreamily.



Sing me to sleep, the
Sing mir dein Lied im

dim. *p colla voce*



shad - ows fall, Let me for - get the world and all.
Däm - mer - schein, gieb mir Ver - ges - sen al - ler Pein.

Copyright, MCMII, by Phillips & Page. U.S.A.
Copyright assigned, 1910, to G. Schirmer, Boston