

Connecticut College

Digital Commons @ Connecticut College

Historic Sheet Music Collection

Greer Music Library

1918

Sleep, My Darling

Elsie Jean Stern

Mana Zucca

Follow this and additional works at: <https://digitalcommons.conncoll.edu/sheetmusic>

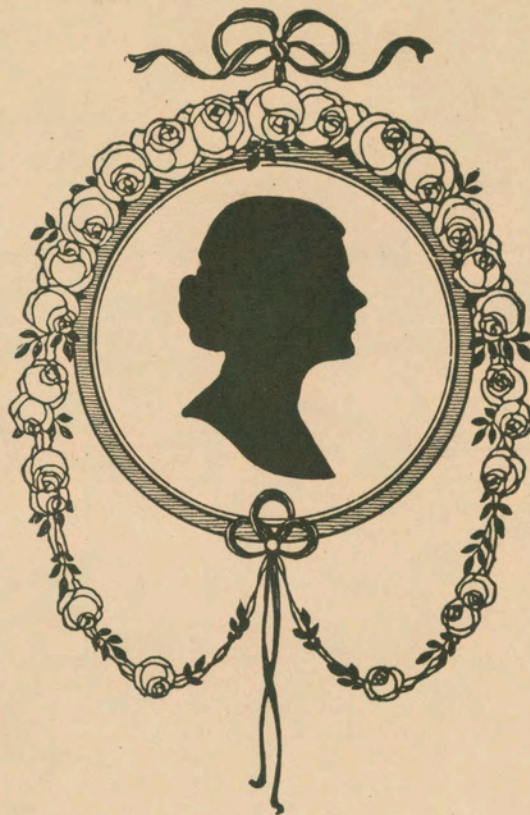
Recommended Citation

Stern, Elsie Jean and Zucca, Mana, "Sleep, My Darling" (1918). *Historic Sheet Music Collection*. 1263.
<https://digitalcommons.conncoll.edu/sheetmusic/1263>

This Score is brought to you for free and open access by the Greer Music Library at Digital Commons @ Connecticut College. It has been accepted for inclusion in Historic Sheet Music Collection by an authorized administrator of Digital Commons @ Connecticut College. For more information, please contact bpancier@conncoll.edu.

The views expressed in this paper are solely those of the author.

M A N A - Z U C C A



Songs

	<i>Net</i>		<i>Net</i>
<i>Behold, 'tis Dawn</i>	.60	<i>Eve and a Glowing West</i>	.60
<i>Medium, E</i>		<i>Medium, Eb</i>	
<i>Love's Coming</i>	.60	<i>Tell Me if This be True</i>	.60
<i>High, G</i>		<i>Medium, Eb; Low, C</i>	
<i>Persian Song</i>	.60	<i>Fairest of all (Piu bello del sole)</i>	.60
<i>High, G minor; Medium, F minor</i>		<i>High, Ab; Medium, Eb</i>	
<i>First Love (Et l'on revient toujours)</i>	.60	<i>Rose-Marie</i>	.60
<i>High, G; Low, Eb</i>		<i>High, D; Low, Bb</i>	
<i>Tear Drops</i>	.60	<i>When the Day has Flown</i>	.60
<i>High, Ab; Low, F</i>		<i>High, G minor; Medium, E minor</i>	
<i>Sleep, my Darling</i>	<u>.60</u> .50	<i>Daddy's Little Boy</i>	.60
<i>High, A minor; Low, F minor</i>		<i>High, F; Low D</i>	

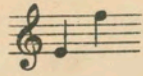
THE BOSTON MUSIC CO · BOSTON

G. SCHIRMER · NEW YORK



Sleep, my darling

Elsie Jean Stern



Mana Zucca, Op. 39, No.12
From "In Youngsterland"

Andantino e sognando

Voice

Piano

p

dolce

pp

Red. *

dolce

Sleep, dar-ling, go to sleep,- Gold-en stars at you now peep -

p

See, each twinkling lit - tle light Comes to bid my babe good night,

Red. Red. Red. Red.

Copyright, 1918, by The Boston Music Co.
For all countries

rall. *a tempo*

Peaceful be your slumbers deep, Sleep, my dar - ling, go to sleep. —

rall. *a tempo*

ped. *ped.* * *ped.* *

Sleep, — darling, go to sleep — Mother lov - ing

p

ped. * *ped.* * *ped.* * *ped.*

watch will keep, Ba - by mine in peace may rest, Angels guard your lit - tle nest,

ped. *ped.* * *ped.* *

rall.

Faithful watch they ev - er keep, sleep, my dar - ling, Ah,

a tempo *espressivo*

sleep, _____ Ah, _____ go to sleep; May God pro-tect you,

a tempo

an - gel sweet, Sleep, my dar - ling, go to sleep, _____

poco rit.

Ah, _____ go to sleep, nes-tle close to mother's heart,

poco rit.

rit.

Then for slum - ber - land we'll start. _____ *più lento rit.* go to sleep.

rit.

più lento

rit.

Lento

(humming) _____

(tempo)

p

pp morendo

Successful Songs by Mana Zucca

Behold, 'tis dawn

ELSIE J. STERN
 Fantastico, quasi senza tempo
 MANA ZUCCA. Op. 20, No. 1

Voice

Piano

The day has kiss'd the night to rest.

Once more the soft-est ro-se-ble morn.

B. M. Co. 5788 a
 Copyright, 1916, by The Boston Music Co.
 For all countries

Behold, 'tis Dawn

Medium, E

Eve and a Glowing West

Medium, E \flat

Fairest of all

Medium, E \flat

First Love

High, G

Love's Coming

High, G

Persian Song

High, G minor; Medium, F minor

Rose-Marie

High, D; Low, B \flat

Tear Drops

High, A \flat ; Low, F

Tell Me if This be True

Medium, E \flat ; Low, C

When the Day has Flown

Medium, E minor

Price, each, .60 net

Artists singing Mana Zucca songs

Frances Alda

Lucrezia Bori

Carl Braun

Florence Easton

Johanna Gadski

Amelita Galli-Curci

Alma Gluck

Christine Langenhan

Giuseppe de Luca

Florence Macbeth

Leon Rothier

Andreas de Segurola

Vernon Stiles

Herman Weil

First love

Et l'on revient toujours

ETIENNE
 Andante
 MANA ZUCCA
 Op. 31

Voice

Piano

Mad with tho
 Dans un dd.

fire of pas sion, Al-ways new chains we fash - ion,
 être ex - trê - me on veut faire ce qu'on a - me,

Breaking those that bound us, Forging oth - ers round us.
 on pré-tend se ven - ger, on ju-re de chan-ger.

B. M. Co. 5788
 Copyright, 1916, by The Boston Music Co.
 For all countries

Boston Music Company, Boston, Mass.