

Connecticut College

Digital Commons @ Connecticut College

Historic Sheet Music Collection

Greer Music Library

1909

Down at Coney Isle

Billy Schneider Jr.

Follow this and additional works at: <https://digitalcommons.conncoll.edu/sheetmusic>

Recommended Citation

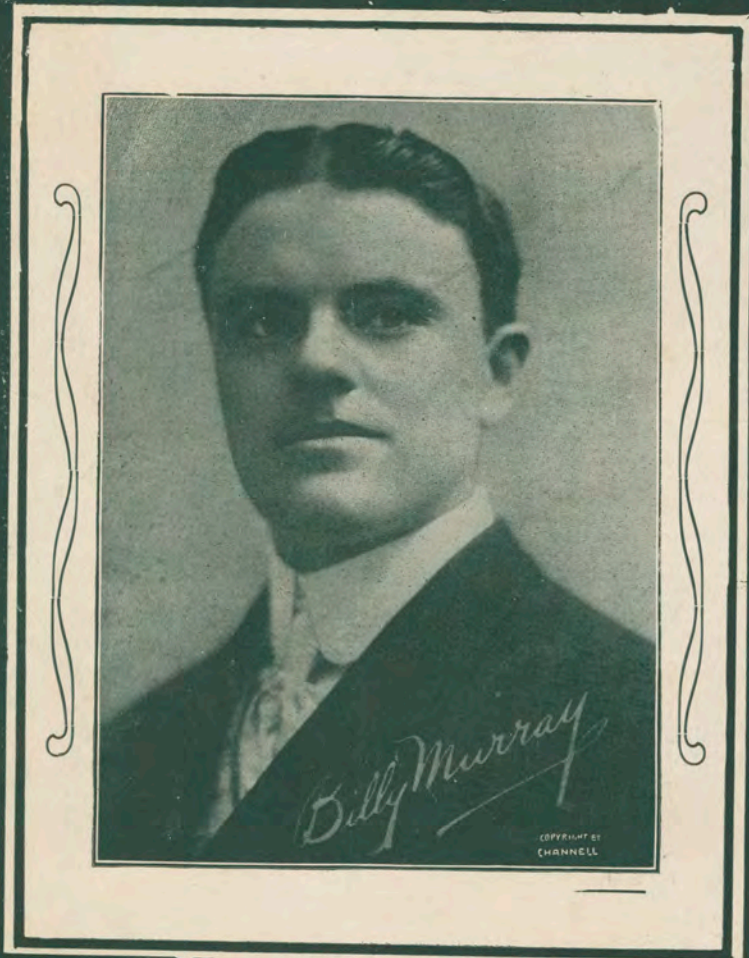
Schneider, Billy Jr., "Down at Coney Isle" (1909). *Historic Sheet Music Collection*. 1355.
<https://digitalcommons.conncoll.edu/sheetmusic/1355>

This Score is brought to you for free and open access by the Greer Music Library at Digital Commons @ Connecticut College. It has been accepted for inclusion in Historic Sheet Music Collection by an authorized administrator of Digital Commons @ Connecticut College. For more information, please contact bpancier@conncoll.edu.

The views expressed in this paper are solely those of the author.

DEDICATED TO MR. PHILIP C. MEYER

DOWN AT CONEY ISLE



WORDS & MUSIC BY



BILLY SCHNEIDER JR.

PUBLISHED BY
SCHNEIDER AND KORN
157 SEYMOUR AVE. NEWARK N.J.

ORANGE MUSIC STORE
357 MAIN ST. ORANGE N.J.

AGTS }
JOSEPH MORRIS CO. 136 N. 9TH ST. PHILA. PA.
THE ENTERPRISE MUSIC SUPPLY CO. 46 W. 28 ST. N.Y. City.
CROWN MUSIC CO. 12 E. 17TH ST. NEW YORK City.
C.H. DITSON & CO. 867 BROADWAY N.Y. City.
NEW YORK MUSIC SUPPLY CO. 17 E. 16TH ST. N.Y. City.
CARL FISHER 6 E 10 4TH AVE. NEW YORK CITY } AGTS.

DOWN AT CONEY ISLE.

Words and Music
by WILLIAM SCHNEIDER JR.

Tempo di Valse.

The piano introduction is written in 3/4 time with a key signature of two flats (B-flat and E-flat). It begins with a forte (f) dynamic. The melody is primarily in the right hand, featuring a mix of eighth and quarter notes, while the left hand provides a steady accompaniment of chords and single notes.

Voice.

The vocal line is written in a soprano or alto clef. The lyrics are: "1. Win - ter has gone and Sum - mer has come, No" and "2. When feel - ing blue, don't know what to do, Just". The piano accompaniment continues with a similar harmonic structure to the introduction, supporting the vocal melody.

The vocal line continues with the lyrics: "skat - - ing for a - while, You" and "take this tip from me, And". The piano accompaniment concludes the piece with a final chord and a few notes in the bass line.

save up your coin, The crowd you will join, For a trip to Con - ey
 pack up your grip, Then go for a trip, To a place down by the

Isle, _____ To a Ball game you'll go Or to see a show,
 sea, _____ With a nice lit - tle girl Your own lit - tle pearl, Your

And spend your good dough, _____ You sigh, then you say Now a
 head is in a whirl, _____ You're hap - py, con - tent, And you've

trip for a day, Down to Con - ey Isle.
 spent your last cent, Down to Con - ey Isle.

Chorus.

p-f

Down at Con - ey Isle, Be in

style, Stay a - while,

Ride the hors - es and loop the loop,

Then take a chance at the shoot the chutes, Its a

Big time rain or shine, Gee, its

fine, Sum-mer-time, If you talk with your

eyes Ev-'ry one will be wise, Down at Con - - ey

1 2
Isle. Isle.

TRY THIS ON YOUR PIANO. STUTTERING DICK.

3

AND HIS STUTTERING SWEETHEART

Allegro Moderato Words and Music by CLIFFORD J. WERNER

The piano introduction consists of two staves. The right hand starts with a series of eighth notes in a rhythmic pattern, while the left hand provides a simple harmonic accompaniment. The tempo is marked 'Allegro Moderato' and the dynamics range from 'f' (forte) to 'fz' (forzando).

Voice.

Till Ready

1. Dick A-lex - an - der Simp-son is a great big tongue-tied
2. Now we would stand and talk to him, a just to hear him
3. They stut-tered in the par-lor in the hall and kitch-en

The vocal line begins with a rest for four measures, then enters with the lyrics. The piano accompaniment is marked 'p' (piano) and features a steady eighth-note accompaniment in the right hand and a more active bass line in the left hand.

coon, He stut-ters and he mut-ters ev - 'ry morn - ing night and
speak, You'd have to stand six feet a - way or he'd driz - zle on your
too, They had the poor old par-rot there a - feel - ing migh - ty

The vocal line continues with the lyrics. The piano accompaniment remains consistent with the previous section, providing a steady accompaniment for the vocal melody.

noon, When he would stand and talk to you, you'd get a show-er bath, You'd
cheek, Its not right to make fun of him, for he is not to blame, You'd
blue, The Pol-ly wig-gled 'round a bit, and said ain't that a shame, If

The vocal line concludes with the lyrics. The piano accompaniment continues to support the vocal melody throughout the final measures of the page.

Copyright 1908 by Clifford J. Werner.

FOR SALE BY ALL MUSIC DEALERS