

Connecticut College

## Digital Commons @ Connecticut College

---

Historic Sheet Music Collection

Greer Music Library

---

1901

### Mighty Lak' a Rose

Frank L. Stanton

Ethelbert Nevin

Follow this and additional works at: <https://digitalcommons.conncoll.edu/sheetmusic>

---

#### Recommended Citation

Stanton, Frank L. and Nevin, Ethelbert, "Mighty Lak' a Rose" (1901). *Historic Sheet Music Collection*. 1433. <https://digitalcommons.conncoll.edu/sheetmusic/1433>

This Score is brought to you for free and open access by the Greer Music Library at Digital Commons @ Connecticut College. It has been accepted for inclusion in Historic Sheet Music Collection by an authorized administrator of Digital Commons @ Connecticut College. For more information, please contact [bpancier@conncoll.edu](mailto:bpancier@conncoll.edu).

The views expressed in this paper are solely those of the author.

Mae

VICTOR RECORD  
No. 64308  
COLUMBIA RECORD  
No. A 2571-

# MIGHTY LAK' A ROSE



Words by

FRANK L. STANTON

Music by

Ethelbert Nevin.

HIGH VOICE.

LOW VOICE

*The John Church Company*  
Cincinnati. Chicago. New York.  
Leipsic. London.

5 net.

"THE HOUSE DEVOTED TO THE PROGRESS OF AMERICAN MUSIC"

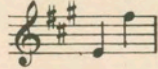
PRINTED IN THE UNITED STATES OF AMERICA



To Mrs. Adele Lae's Baldwin.

## Mighty lak' a rose.

(High Voice.)



Text by FRANK L. STANTON.

Music by ETHELBERT NEVIN.

Sweetest li'-l' fel-ler, Ev'-ry-bod-y knows; Dun-no what to call him, But he

might-y lak' a rose! Look-in' at his Mammy Wid eyes so shin-y blue, Mek'you think that heav'n Is

com-in' clost ter you! Wen' he's dar a-sleep-in', In his li'l' place, Think I see de an-gels

*cantando.*



Look-in' thro' de lace, W'en de dark is fall - in', W'en de shad-ders creep,

Den dey comes on tip - toe Ter kiss 'im in his sleep.— Sweet-est li - 'l' fel - ler,

Ev-'ry-bod-y knows; Dun-no what to call 'im, But he might - y lak' a rose!

Look-in' at his Mammy Wid eyes so shin-y blue, Mek' you think that heav'n Is com-in' clost ter you!



# Sleepy-Town

ELINORE COBB

CARL HAHN

*Softly throughout*

Introduction for piano. The music is in 8/8 time and G major. It consists of three staves: a treble staff with a whole note chord, a grand staff with a piano accompaniment, and a bass staff with a piano accompaniment. The piano part features a melody of eighth notes in the right hand and a bass line of eighth notes in the left hand. A dynamic marking of *p* is present.

First line of the song. The vocal melody is on a treble staff, and the piano accompaniment is on a grand staff. The lyrics are: "O-ver the road to Sleep - y - town, All in the sum - mer". The piano part continues with the same accompaniment pattern as the introduction.

Second line of the song. The vocal melody is on a treble staff, and the piano accompaniment is on a grand staff. The lyrics are: "weath er, Ev - 'ry day at noon - tide high, Go,". The piano part continues with the same accompaniment pattern.

Copyright, MCMXIV, by The John Church Company  
International Copyright