

Connecticut College

Digital Commons @ Connecticut College

Historic Sheet Music Collection

Greer Music Library

1910

Mother Machree

Rida Johnson Young

Chauncey Olcott

Ernest R. Ball

Follow this and additional works at: <https://digitalcommons.conncoll.edu/sheetmusic>

Recommended Citation

Young, Rida Johnson; Olcott, Chauncey; and Ball, Ernest R., "Mother Machree" (1910). *Historic Sheet Music Collection*. 1438.

<https://digitalcommons.conncoll.edu/sheetmusic/1438>

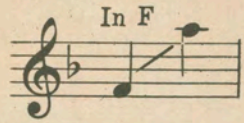
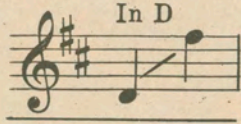
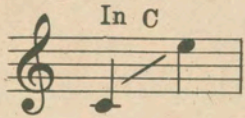
This Score is brought to you for free and open access by the Greer Music Library at Digital Commons @ Connecticut College. It has been accepted for inclusion in Historic Sheet Music Collection by an authorized administrator of Digital Commons @ Connecticut College. For more information, please contact bpancier@conncoll.edu.

The views expressed in this paper are solely those of the author.

Mae

L. Mae Mac Dulosh

SUNG BY
CHAUNCEY OLCOTT
AND
JOHN M^c CORMACK.



In B \flat
Contralto or
Baritone
(Lead)
and
In B \flat
Soprano or
Tenor

Duet
Two Keys



In F
Soprano or
Tenor
(Lead)
and
In F
Contralto or
Baritone

MOTHER MACHREE

“““ *SONG* “““



LYRIC BY

RIDA JOHNSON YOUNG

MUSIC BY

CHAUNCEY OLCOTT AND ERNEST R. BALL

Solo 60 Cents

Duet 75 Cents

M. WITMARK & SONS,

NEW YORK • CHICAGO • SAN FRANCISCO • LONDON • PARIS.

Caro Roma's Beautiful Southern Ballad

Can't Yo' Heah Me Callin'

Caroline

Lyric by
Wm H. GARDNER

Published as follows
Solo Three Keys - Eb, C to Eb. F, D to F. G, E to G. 60¢ each
Duet Two Keys - In Eb Soprano or Tenor and Baritone or
Contralto (Lead) In G Soprano or Tenor (Lead) and Baritone or Contralto. 75¢
Male, Female or Mixed Voices, 15 cents each

Music by
CARO ROMA

Appealingly

Can't yo' heah me call-in' Car-o-line, It's mah heart a-call-in' dine.

Lord - y, how I miss yo', gal o' mine, Wish dat I could kiss yo' Car-o-

line! Aint no use now fo' de sun to shine, Car-o - line, Car-o-

line, *rit. molto espression* Can't yo' heah mah lips a - say - in', Can't yo' heah mah soul a - pray - in', *rit.*

Published and Copyrighted MCMXIV by M. Witmark & Sons, 10 Witmark Building New York
CHICAGO SAN FRANCISCO LONDON PARIS

Complete Copies can be had wherever Music is sold or from the Publishers
Solo 60 cents Duet 75 cents Discount 1/2 off postpaid. Octavo 15 cents each net postpaid

Mother Machree.

—++—

There's a spot in me heart which no colleen may own,
There's a depth in me soul never sounded or known;
There's a place in my mem'ry, my life, that you fill,
No other can take it, no one ever will.

—+—

Sure I love the dear silver that shines in your hair,
And the brow that's all furrowed and wrinkled with care.
I kiss the dear fingers, so toil-worn for me,
Oh, God! bless you and keep you, Mother Machree!

—+—

Ev'ry sorrow or care in the dear days gone by,
Was made bright by the light of the smile in your eye;
Like a candle that's set in a window at night
Your fond love has cheered me, and guided me right.

Rida Johnson Young.

MOTHER MACHREE.

Lyric by
RIDA JOHNSON YOUNG.

Music by
CHAUNCEY OLCOTT
& ERNEST R. BALL.

Allegretto, ma espressivo.

The piano introduction is written in 6/8 time with a key signature of two sharps (D major). It begins with a treble clef staff containing a whole rest. The piano accompaniment starts in the right hand with a melody of eighth notes, and the left hand provides a harmonic accompaniment. Dynamics include *mf* (mezzo-forte) and *mp* (mezzo-piano), with a *poco rit.* (slightly ritardando) marking towards the end of the introduction.

The first line of the song features a vocal melody in the treble clef and piano accompaniment in the grand staff. The lyrics are: "There's a spot in me heart which no col - leen may own, There's a Ev - 'ry sor - row or care in the dear days gone by, Was made". The piano accompaniment is marked *p* (piano).

The second line of the song continues the vocal melody and piano accompaniment. The lyrics are: "depth in me soul nev - er sound - ed er known; There's a bright by the light of the smile in your eye, Like a". The piano accompaniment continues with a steady accompaniment.

5142

M.W.& SONS 11439-4

Copyright MCMX by M. Witmark & Sons.
International Copyright Secured.

place in my mem - 'ry, my life that you fill, No
 can - dle that's set in a win - dow at night, Your

oth - er can take it, no one ev - er will. Sure I
 fond love has cheered me, and guid - ed me right.

molto rall.

Tenderly with much expression

love the dear sil - ver that shines in your hair, And the

mp espress.

brow that's all fur - rowed, And wrink - led with care. I

kiss the dear fin - gers so toil worn for me, Oh, God

mp *mf* *dim.*

bless you and keep you, Moth - er Ma - chree!—

p *molto sost.*

No Prettier Lullaby Than This Has Ever Been Written

Too-ra-loo-ra-loo-ral
THAT'S AN IRISH LULLABY

Solo Four Keys - C, etc. Eb, eb to eb. F, f to f. G, g to g. 60¢ each
Octavo - Male, Female or Mixed Voices 15 cents each

Lyric and Music
By J. R. SHANNON

REFRAIN *Smoothly with much expression*
in time

"Too - ra - loo - ra - loo - ral, — Too - ra - loo - ra li,

mp in time

Too - ra - loo - ra - loo - ral, — Hush now, don't you cry!

Too - ra - loo - ra - loo - ral, — Too - ra - loo - ra -

li, Too - ra - loo - ra - loo - ral, That's an I - rish lul - la -

retard

Published and Copyrighted MCMXIII by M. Witmark & Sons 10 Witmark Building New York
CHICAGO SAN FRANCISCO LONDON PARIS

Complete Copies can be had wherever Music is sold or from the Publishers
Solo Price 60 cents Discount 1/2 off postpaid Octavo Net postpaid

BEAUTIFUL IRISH BALLADS

THAT ARE BEING SUNG BY THE WORLD'S GREATEST ARTISTS

INCLUDING

JOHN
McCORMACK

CHAUNCEY
OLCOTT

ORVILLE
HARROLD

GEORGE
MACFARLANE

AND HUNDREDS OF OTHERS

MOTHER MACHREE.

Lyric by
RIDA JOHNSON YOUNG.

Tenderly with much expression

Music by
CHAUNCEY OLCOTT
& ERNEST R. BALL.

Sure, I love the dear sil-ver that shines in your hair, And the
brow that's all fur-rowed, And wrink-led with care. I
kiss the dear fin-gers so toil worn for me, Oh, God

mp *espress.* *mf* *dim.*

Copyright MCMX by M. Witmark & Sons.

SOLO, FOUR KEYS:—B \flat , (2 \flat TO D) C, D, AND F. DUET, TWO KEYS:—B \flat AND F

A Little Bit Of Heaven

Shure They Call It Ireland

Poem by
J. KEIRN BRENNAN

Music by
ERNEST R. BALL

Shure, a lit-tle bit of Heav-en fell from out the sky one day, And
nes-tled on the o-cean in a spot so far a-way;— And
when the An-gels found it, Shure it looked so sweet and fair,— They

mf *a tempo* *retard* *a tempo*

Copyright MCMXIV by M. Witmark & Sons

SOLO, THREE KEYS:—A \flat , (C TO F) B \flat AND C

When Irish Eyes Are Smiling

Lyric by
CHAUNCEY OLCOTT
& GEO. GRAFF Jr.

Music by
ERNEST R. BALL

When I-rish eyes are smi-ling,— Sure it's like a morn in
Spring.— In the lilt of I-rish laugh-ter, You can hear the
an-gels sing.— When I-rish hearts are hap-py,— All the

mp

Copyright MCMXII by M. Witmark & Sons

SOLO, THREE KEYS:—C, (C TO F) D AND F

Too-ra-loo-ra-loo-ral THAT'S AN IRISH LULLABY

Words and Music
By J. R. SHANNON

"Too-ra-loo'-ra-loo-ral,— Too-ra-loo-ra-li, Too-ra-loo-ra-
loo-ral,— Hush now, don't you cry!— Too-ra-loo-ra-loo-ral,—
Too-ra-loo-ra-li, Too-ra-loo-ra-loo-ral, That's an I-rish lul-la-by."

in time *Tenderly with much expression* *mp* *in time* *retard* *retard*

Copyright MCMXIII by M. Witmark & Sons

SOLO, THREE KEYS:—C, (C TO C) E \flat AND F

COMPLETE COPIES CAN BE HAD WHEREVER MUSIC IS SOLD OR FROM THE PUBLISHERS
M. WITMARK & SONS 10 WITMARK BUILDING NEW YORK

SOLO 60 CENTS. DUET 75 CENTS. DISCOUNT ONE-HALF OFF, POSTPAID. SEND FOR OUR COMPLETE MUSIC CATALOGUE No. 88—IT'S FREE