

Connecticut College

Digital Commons @ Connecticut College

Historic Sheet Music Collection

Greer Music Library

1910

Perfect Day, A

Carrie Jacobs-Bond

Follow this and additional works at: <https://digitalcommons.conncoll.edu/sheetmusic>

Recommended Citation

Jacobs-Bond, Carrie, "Perfect Day, A" (1910). *Historic Sheet Music Collection*. 1455.
<https://digitalcommons.conncoll.edu/sheetmusic/1455>

This Score is brought to you for free and open access by the Greer Music Library at Digital Commons @ Connecticut College. It has been accepted for inclusion in Historic Sheet Music Collection by an authorized administrator of Digital Commons @ Connecticut College. For more information, please contact bpancier@conncoll.edu.

The views expressed in this paper are solely those of the author.



When you come to the end of a Perfect Day
 And you sit alone with your thought
 While the chimes ring out with a carol gay
 For the joy that the day has brought.
 Do you think what the end of a Perfect Day
 Can mean to a tired heart
 When the sun goes down with a flaming ray
 And the dear friends have to part ?

Carrie Jacobs-Bond
 1909

L. Mae Stephenson.

L. Mae

A PERFECT DAY

Words and Music

by

CARRIE JACOBS-BOND

High
 * Medium
 Low

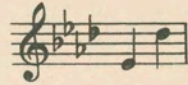
Published at
 THE BOND SHOP
 BY
CARRIE JACOBS-BOND & SON
INCORPORATED
 726 SOUTH MICHIGAN AVENUE
 CHICAGO

THE FREDERICK HARRIS CO.
 Authorized Agents for the British Empire
 10 SHUTER STREET, TORONTO, CANADA. 89 NEWMAN STREET, LONDON, ENGLAND.

60
 2|-Net

A PERFECT DAY

'Cello Obligato



Words and Music by
CARRIE JACOBS-BOND

Moderato espressivo

Cello.

p sostenuto
p
When you come to the end of a per - fect day, And you sit a - lone with your

thought, — While the chimes ring out with a car - ol gay, For the

joy that the day has brought, Do you think what the end of a

mf

mf

mf

per - fect day Can mean to a tired heart, When the

sun goes down with a flam-ing ray, And the dear friends have to part?

rall. *p*

rall. *p*

rall. *p*

5

p *cresc.* *mf*

p *cresc.* *mf*

p *p*

Well, this is the end of a perfect day, Near the end of a journey,

p

too; But it leaves a thought that is big and strong, With a

mf

wish that is kind and true. For mem-'ry has paint-ed this

mf

mf

per - fect day With col - ors that nev - er fade, And we

rall. *pp*

find, at the end of a per-fect day, The soul of a friend we've made.

rall. *pp*

A PERFECT DAY

'Cello Obligato

'CELLO

CARRIE JACOBS-BOND

Moderato espressivo

p sostenuto

mf

rall. p

p cresc. mf > p

mf

rall. pp



