

Connecticut College

Digital Commons @ Connecticut College

Historic Sheet Music Collection

Greer Music Library

1918

Sunrise and You

Arthur A. Penn

Follow this and additional works at: <https://digitalcommons.conncoll.edu/sheetmusic>

Recommended Citation

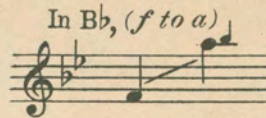
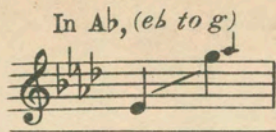
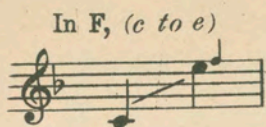
Penn, Arthur A., "Sunrise and You" (1918). *Historic Sheet Music Collection*. 1477.
<https://digitalcommons.conncoll.edu/sheetmusic/1477>

This Score is brought to you for free and open access by the Greer Music Library at Digital Commons @ Connecticut College. It has been accepted for inclusion in Historic Sheet Music Collection by an authorized administrator of Digital Commons @ Connecticut College. For more information, please contact bpancier@conncoll.edu.

The views expressed in this paper are solely those of the author.

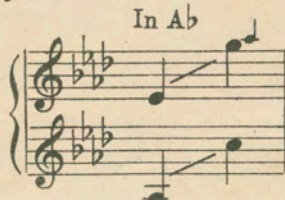
L. Mac Mac Duet

45



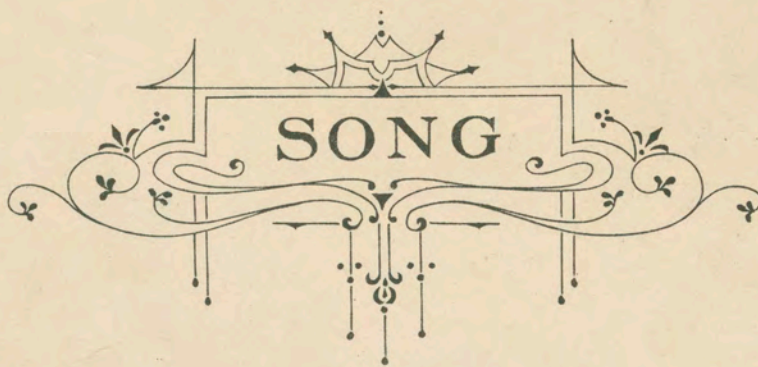
Duet

Tenor or
Soprano (g to g)
and
Alto or
Baritone (lead) (bb to d)



Soprano or
Tenor (lead) (e to g)
and
Alto or
Baritone (a to c)

SUNRISE AND YOU



Lyric and Music

BY

ARTHUR A. PENN

Writer of "THE MAGIC OF YOUR EYES" "REMINDS ME, REMINDS ME OF YOU" "JUST TO HEAR YOU WHISPER" Etc.

Solo 40 cents net

Duet 50 cents net

QUARTET - MALE, FEMALE AND MIXED VOICES 25 CENTS EACH NET



M. WITMARK & SONS

NEW YORK - CHICAGO - PHILADELPHIA
SAN FRANCISCO - BOSTON
LONDON

L. Mac Mac

Two Charming Encore Songs by Arthur A. Penn

WITHIN THE LEAVES

Solo, in F, (c to f,) 40¢ postpaid

Andante affetuoso

That sim - ple lit - tle flow'r That once you gave to me, It
lived for but an hour, Then fa - ded, as you see! With - in these yel - lowed leaves It

p

The musical score for 'Within the Leaves' is written for voice and piano. It features a vocal line with lyrics and a piano accompaniment. The tempo is 'Andante affetuoso'. The key signature is one flat (F major/D minor). The score consists of two systems of music. The first system includes the vocal line and piano accompaniment for the first two lines of lyrics. The second system includes the vocal line and piano accompaniment for the next two lines of lyrics. The piano part includes a dynamic marking of *p* (piano).

THE CHOICE

Solo, in Eb, (eb to g) 40¢ postpaid

Allegretto rubato

Rose was her name, and she brought me a love - ly bou - quet of flow'rs. She
gave them to me With a smile, did she, That brightened the twi - light hours. She

f

ten..

poco rall.

The musical score for 'The Choice' is written for voice and piano. It features a vocal line with lyrics and a piano accompaniment. The tempo is 'Allegretto rubato'. The key signature is three flats (Eb major/C minor). The time signature is 6/8. The score consists of two systems of music. The first system includes the vocal line and piano accompaniment for the first two lines of lyrics. The second system includes the vocal line and piano accompaniment for the next two lines of lyrics. The piano part includes dynamic markings of *f* (forte) and *poco rall.* (poco rallentando). There is also a *ten..* (tenuto) marking above the vocal line in the first system.

Published and Copyrighted by M. Witmark & Sons, 7 Witmark Building, New York
CHICAGO — SAN FRANCISCO — LONDON — PARIS

Complete Copies can be had wherever Music is sold or from the Publishers
Price 40 cents each, postpaid

To
H. A. O.

SUNRISE AND YOU

Lyric and Music
By ARTHUR A. PENN

Slowly

mp *rit.*

The piano introduction consists of two staves. The right hand features a melodic line with a long slur over the first four measures, followed by a half note and a quarter note. The left hand provides a harmonic accompaniment with chords and moving lines. Dynamics include *mp* and *rit.*

Moderately

Far in the East there's a soft, crim-son glow, The new day blush-es at its

mp

The first system of the song includes a vocal line and piano accompaniment. The tempo is marked 'Moderately'. The lyrics are: 'Far in the East there's a soft, crim-son glow, The new day blush-es at its'. The piano accompaniment features a steady eighth-note pattern in the right hand and a more active bass line in the left hand. Dynamics include *mp*.

dawn - - ing; Soft sing the birds in a cease - less flow Their

cresc.

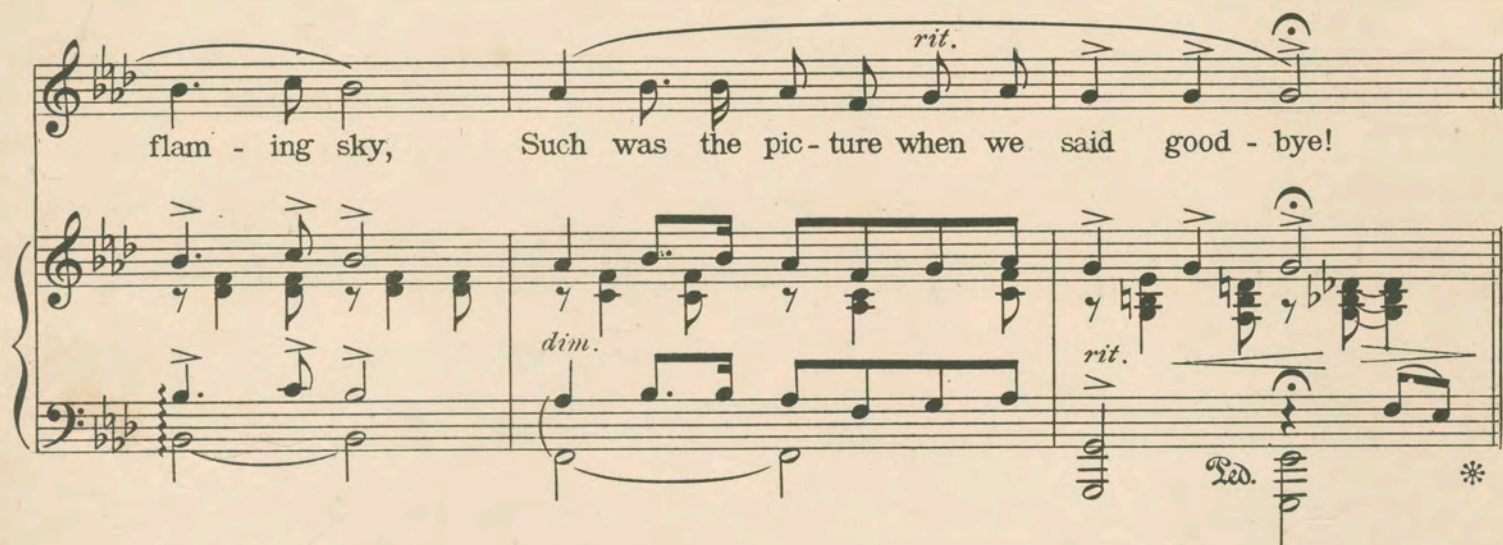
The second system continues the vocal and piano accompaniment. The lyrics are: 'dawn - - ing; Soft sing the birds in a cease - less flow Their'. The piano accompaniment continues with similar patterns. Dynamics include *cresc.*

poco rit.
wel-come to the new - born morn - ing. Dull gray sha-dows, then a




flam - ing sky, Such was the pic - ture when we said good - bye!

rit.
dim.
rit.



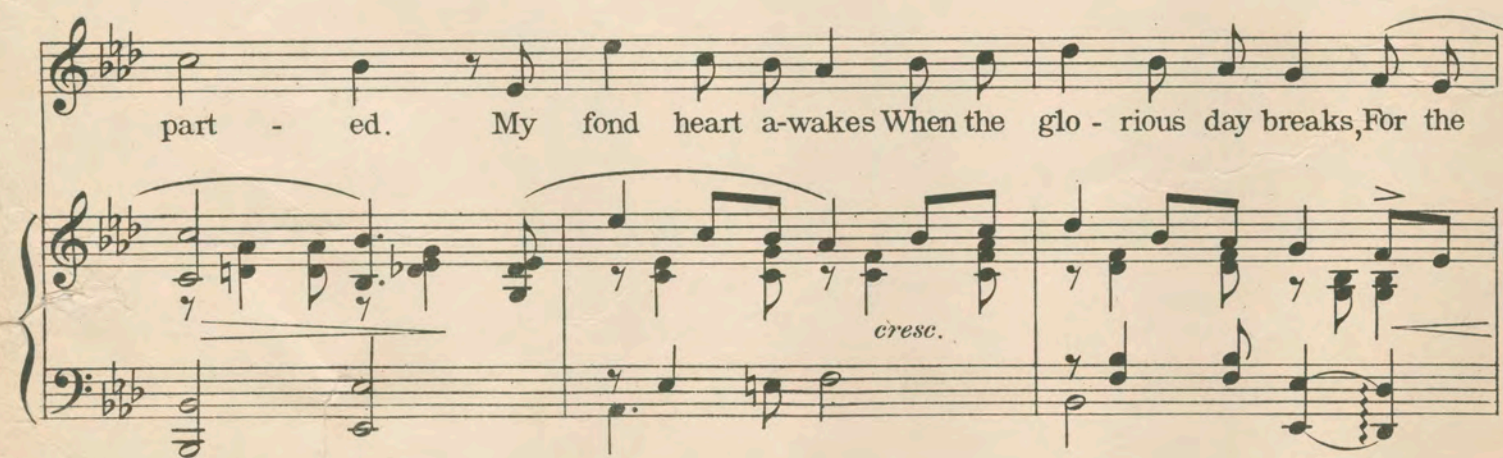
Very slowly and with much expression
Sun - rise and you, And the soft morn - ing dew, Like the tears on your cheek when we

mp



part - ed. My fond heart a-wakes When the glo - rious day breaks, For the

cresc.



ten. *rit.*
 sun - rise re - minds me of you!

ten. *rit.* *pp* *mf piu accel.*

L'istesso tempo

Out from the depths of a star - less night Comes

rit.

ra - diant morn, to find me long - ing; Gone are the sha - dows, my

heart is light, And in my breast new hopes are thron - ing.

cresc. *f*

poco rit. *a tempo* *poco accel.*

Cold gray dawn will soon have passed, and then Skies will be smiling when we

rit. ten. *Slowly and very tenderly*

meet a - gain! Sun - rise and you, And the soft morn - ing dew, Like the

tears on your cheek when we part - ed. My fond heart a-wakes When the

ten.

glo - rious day breaks, For the sun - rise re - minds me of you!