

1921

# When Grand Circus Park Was Uptown

Richard A. Whiting

Follow this and additional works at: <https://digitalcommons.conncoll.edu/sheetmusic>

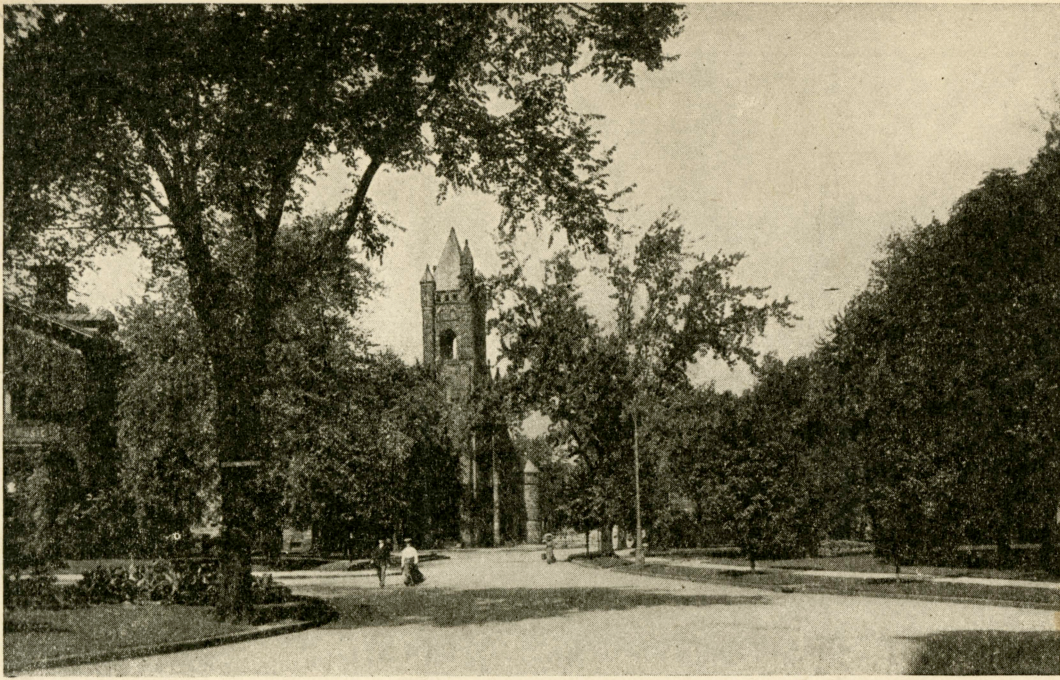
---

## Recommended Citation

Whiting, Richard A., "When Grand Circus Park Was Uptown" (1921). *Historic Sheet Music Collection*. 1571.  
<https://digitalcommons.conncoll.edu/sheetmusic/1571>

This Score is brought to you for free and open access by the Greer Music Library at Digital Commons @ Connecticut College. It has been accepted for inclusion in Historic Sheet Music Collection by an authorized administrator of Digital Commons @ Connecticut College. For more information, please contact [bpancier@conncoll.edu](mailto:bpancier@conncoll.edu).

The views expressed in this paper are solely those of the author.



Grand Circus Park—Forty Years Ago

*Introduced during  
the Fortieth Anni-  
versary of The J. L.  
Hudson Co., Detroit*

# When Grand Circus Park Was Uptown

LYRIC

Raymond B. Egan

MUSIC

Richard A. Whiting

Published by

**Jos. B. Mills**

DETROIT



Grand Circus Park—Forty Years Ago

# When Grand Circus Park Was Up Town

Lyric by  
RAYMOND B. EGAN

Music by  
RICHARD A. WHITING

Moderato

*f*

This block contains the piano introduction. It features a treble and bass clef with a key signature of one sharp (F#) and a common time signature (C). The tempo is marked 'Moderato'. The music begins with a forte (*f*) dynamic. The right hand plays a series of eighth and sixteenth notes, while the left hand provides a steady bass line with some chords. The piece concludes with two accented chords marked with a triangle symbol (^).

VAMP

VOICE

Wel - come Stranger to our  
Cit - y squares re - place the

*mf* *p*

This block shows the 'VAMP' section and the beginning of the voice part. The piano accompaniment starts with a mezzo-forte (*mf*) dynamic and features a melodic line in the right hand and a bass line in the left hand. The voice part enters with the lyrics 'Wel - come Stranger to our Cit - y squares re - place the'. The piano accompaniment then softens to a piano (*p*) dynamic.

Cit - y,  
mead - ows,

Wel - come to our Gate.  
That we used to know.

This block continues the voice and piano accompaniment. The voice part sings 'Cit - y, mead - ows, Wel - come to our Gate. That we used to know.' The piano accompaniment continues with a melodic line in the right hand and a bass line in the left hand, ending with a final chord marked with an 8.

Just this sim-ple lit - tle slo - gan made a small town  
 And the wild-wood of our child - hood van - ished years a -

great. Peo - ple heard and Peo - ple an - swered,  
 go. Still I love to steal a mo - ment,

and we're in their debt, For they built a might - y  
 from the bu - sy day, Spend-ing it in dreams of

Cit - y, and yet I cant for - get.  
 old times, now lost to us for aye.

CHORUS

When Grand Circus Park was uptown and bi-cycles were all the craze; There

*p-f*

was-n't the clam-orand glam-our, But those were the won-der-ful days. Then

Dad did the fam-i - ly's vot - ing, and Mother's one prob-lem was pies; And

ear-ly to bed and ear-ly to rise, Kept the ros-es in cheeks and the sun-shine in eyes. When

Grand-fa-ther drove our sur-rey down main street without an-y fuss, The

horsethat had nev - er known hur - ry, Was quite fast e - nough to suit us. Then the

old Cit - y hall seemed beau-ti-ful, When the style was a ging-ham gown, They're were

man-y more miles on the av - e - nue, When Grand Circus Park was up town. When town.

*L.H.*

