

1820

When the Morning First Dawns, Air

W. M. Rooke

Follow this and additional works at: <https://digitalcommons.conncoll.edu/sheetmusic>

Recommended Citation

Rooke, W. M., "When the Morning First Dawns, Air" (1820). *Historic Sheet Music Collection*. 1576.
<https://digitalcommons.conncoll.edu/sheetmusic/1576>

This Score is brought to you for free and open access by the Greer Music Library at Digital Commons @ Connecticut College. It has been accepted for inclusion in Historic Sheet Music Collection by an authorized administrator of Digital Commons @ Connecticut College. For more information, please contact bpancier@conncoll.edu.

The views expressed in this paper are solely those of the author.

WHEN THE MORNING FIRST DAWNS

A T R,

SUNG BY

Miss Sheriff

In the Grand Romantic Opera

St. Valie

OR

THE LOVE TEST,

Performed at the

CHESNUT STREET THEATRE

The Words by

J. T. Haines,

The Music by

W. M. ROOKE,

Pr. 75.

40

Philadelphia, George Willig 171 Chesnut S^t

For sale by E. Johns & C^o New Orleans.

Motard S^o

THE UNIVERSITY OF CHICAGO
LIBRARY
1877

WHEN THE MORNING FIRST DAWNS.

Allegretto.

Piano. *8va*

mf

The first system of the piano introduction, consisting of two staves (treble and bass clef) in 6/8 time. The treble staff begins with a melodic line marked *8va* (octave up) and *mf* (mezzo-forte). The bass staff provides a rhythmic accompaniment with chords and moving lines.

The second system of the piano introduction, continuing the melodic and rhythmic themes from the first system.

Voce.

The first system of the vocal line, starting with a whole rest followed by a melodic phrase.

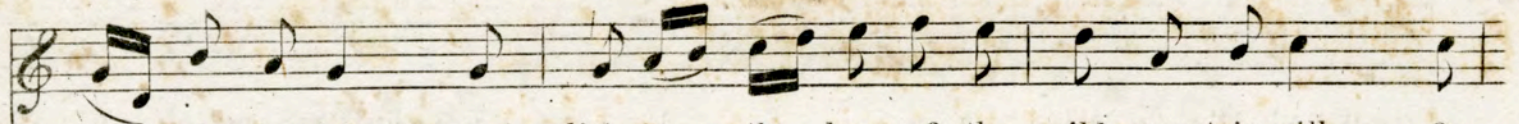
When the morning first dawns, we will seek the green hill, Be-

loco

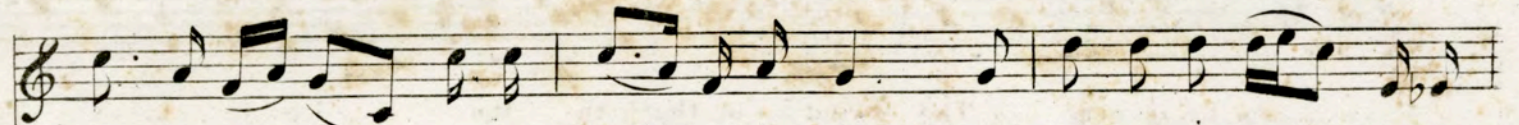
The piano accompaniment for the first vocal line, starting with a *p* (piano) dynamic. It features chords and a rhythmic pattern that supports the vocal melody.

fore the horn from the peak wakes the plain, Be- fore the horn from the

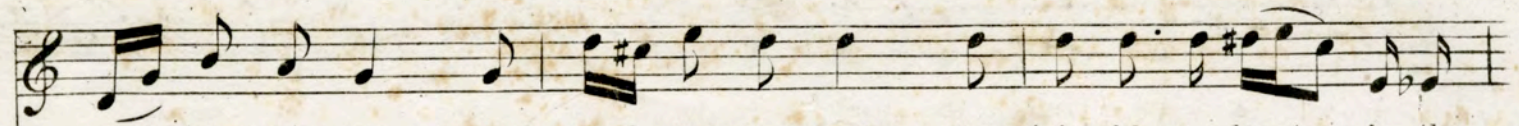
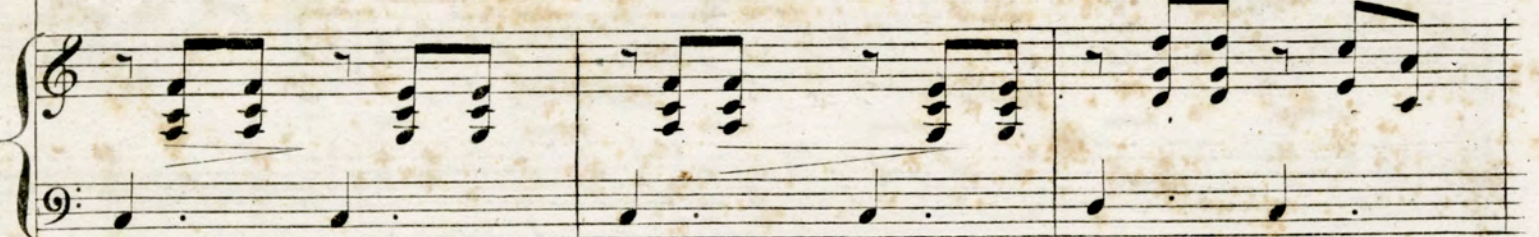
The piano accompaniment for the second vocal line, including a *cres* (crescendo) marking. The accompaniment continues with chords and a steady rhythm.



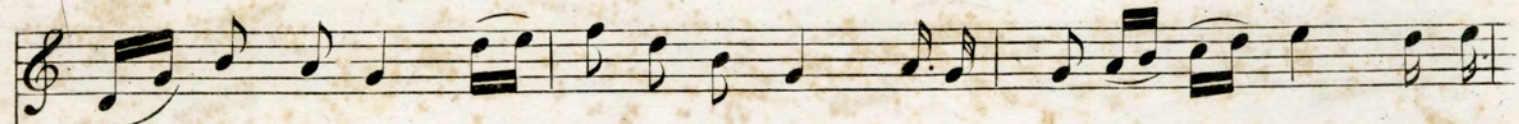
peak wakes the plain; And list to the hum of the wild mountains rill, Or



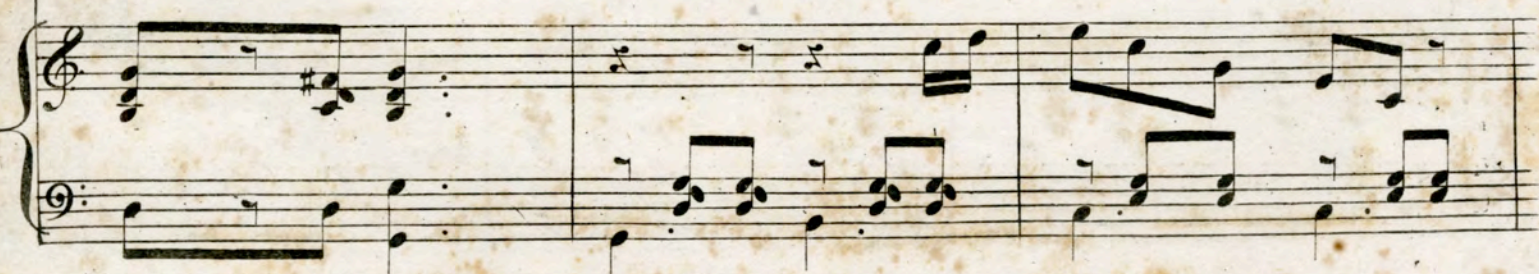
join with pure hearts in the lark's thrilling strain, Or join with pure hearts in the



lark's thrilling strain, the lark's thrilling strain, Or join with pure hearts in the



lark's thrilling strain, Hail hail the fresh morn list the chirp of the birds, Hark the



When the morning.

pipe of the shepherd hark the low of the herds, While dis-tant and dy-ing sweet

e - cho brings near The sound of the horn the vil - lage to cheer The

sound of the horn the vil - lage to cheer li - ra la - - li ra - la li - ra

cres *ritard*

la la la la la la la - - li - ra - - la li la li - - ra

8va *pp*

When the morning,

la li ra la li ra la li ra la li ra la li ra

f *pp*

la

f

When the first star of evening il - lu - mines the sky, And

p

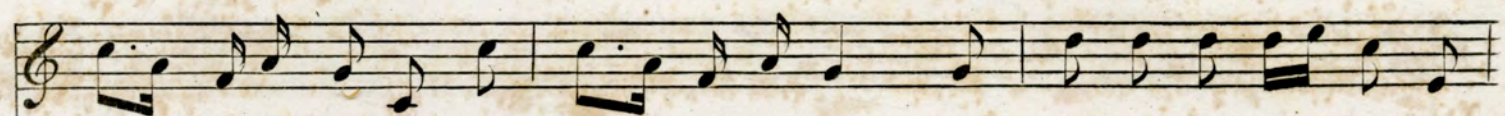
herds from the hills, seek their homes in the vale, And herds from the hills, seek their

cres

When the morning.



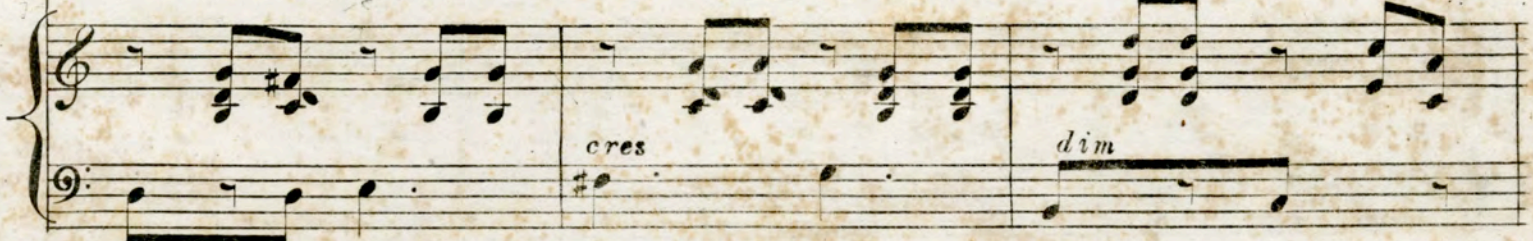
home in the vale; Hand in hand we will roam the lone rivu - let by, And



list to the Nightin - gale's heart soothing tale, And list to the Night - in - gale's



heart soothing tale, the Night - in - gale's tale, And list to the Night - in - gale's



heart soothing tale, Hail! hail! the calm eve, see each bird flies to rest; See the



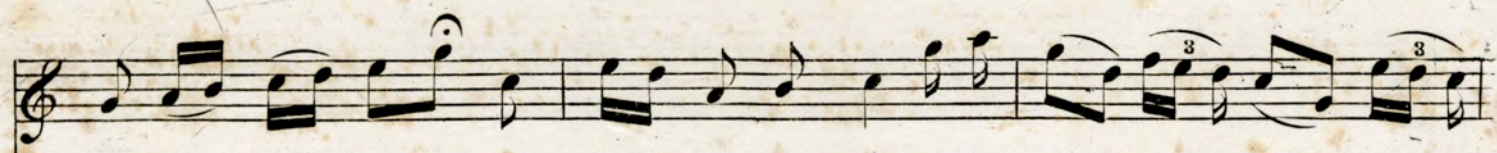
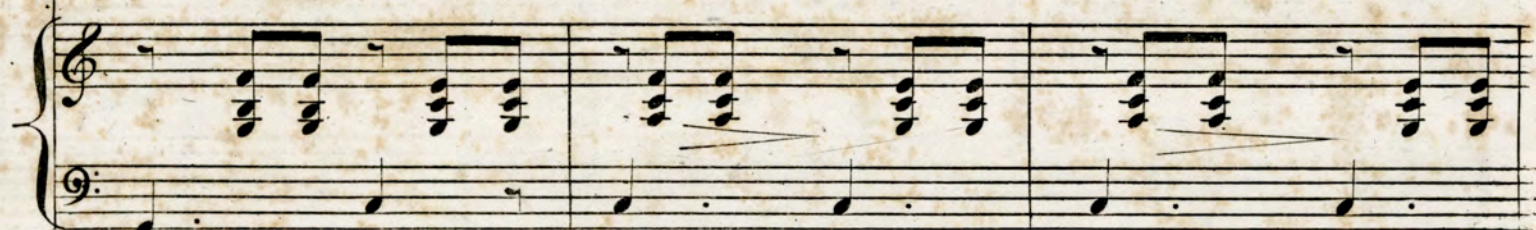
When the morning.



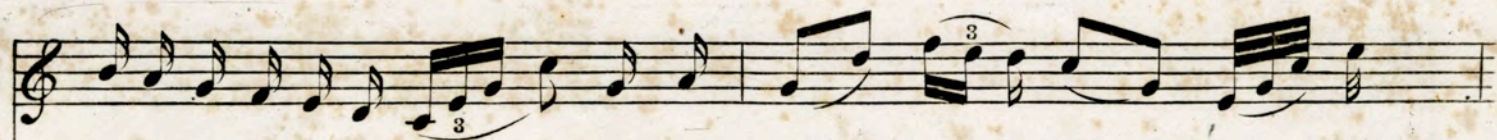
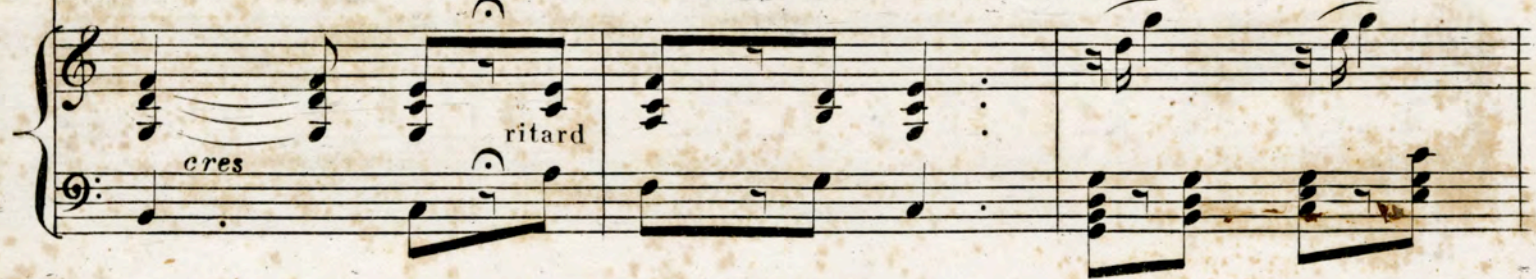
wife spreads the board, and the hind seeks his rest, While dis - tant and dy - ing sweet



e - cho brings near The sound of the horn the vil - - lage to cheer The



sound of the horn the vil - - lage to cheer li - ra la - li - ra - la - li - ra



la la la la la la la li ra li ra la li ra



la li ra la li ra la li ra la li ra la li ra

pp

la.

f

f

f

When the morning.

300



[Faded, illegible text, possibly bleed-through from the reverse side of the page. The text is arranged in several lines and is significantly obscured by the paper's texture and staining.]