

Connecticut College

Digital Commons @ Connecticut College

Historic Sheet Music Collection

Greer Music Library

1847

Come to This Heart So Lonely

Giuseppe Sarti

Francis Weiland

Follow this and additional works at: <https://digitalcommons.conncoll.edu/sheetmusic>



Part of the [Music Commons](#)

Recommended Citation

Sarti, Giuseppe and Weiland, Francis, "Come to This Heart So Lonely" (1847). *Historic Sheet Music Collection*. 28.

<https://digitalcommons.conncoll.edu/sheetmusic/28>

This Score is brought to you for free and open access by the Greer Music Library at Digital Commons @ Connecticut College. It has been accepted for inclusion in Historic Sheet Music Collection by an authorized administrator of Digital Commons @ Connecticut College. For more information, please contact bpancier@conncoll.edu.

The views expressed in this paper are solely those of the author.

COME TO THIS HEART SO LONELY

A favorite Song

THE MUSIC Composed by

SARTL

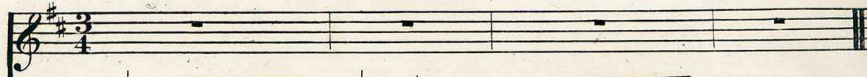
Arranged for the GUITAR, &c.

F. WEILAND,

Philadphiæ LEE & WALKER 120 Walnut St

Entered according to act of Congress in the Year 1847 by Lee & Walker in the Clerk's Office of the District Court of the Eastern District of Pa.

VOICE.



GUITAR.



Oh! calm ye heav'n in slum.. bers, My sorrow for awhile,



And send my best be...lov.....ed, Each sorrow to be.....guile.



And send my best be...lov.....ed, Each sor.....row to be...guile.



But if my pray's are fruit...less, At least let her re...turn,

When thou art far I lan...guish, Nor taste the sweets of peace,

To bathe with tears of pi...tity, The dust with...in my urn; The

Oh! come and soothe my an...guish, And bid each sor...row cease; And

dust with...in my urn. Oh! calm ye heav'n in slum...ber,

bid *rallent:* each sorrow cease. Come to this heart so lone...ly,

My sor...row for a while, And send my best be...lov'd, Each

Come cheer me with thy smile, Thou hast the power on...ly, Each

sor...row to be...guile; And send my best be...lov'd, Each

sor...row to be...guile; Thou hast the power on...ly, Each

sor...row to be...guile.

sor...row to be...guile.

4 2 0 2 3 3 1 2 4 1 3 1 7th poss:

265. 2.