

1-1-2011

New London Main Street: The District, New London Waterfront

Sarah Knowles

Connecticut College, sarah.knowles@conncoll.edu

Follow this and additional works at: <http://digitalcommons.conncoll.edu/archstudintproj>

Recommended Citation

Knowles, Sarah, "New London Main Street: The District, New London Waterfront" (2011). *Architectural Studies Integrative Projects*. Paper 30.
<http://digitalcommons.conncoll.edu/archstudintproj/30>

This Article is brought to you for free and open access by the Art History and Architectural Studies at Digital Commons @ Connecticut College. It has been accepted for inclusion in Architectural Studies Integrative Projects by an authorized administrator of Digital Commons @ Connecticut College. For more information, please contact bpancier@conncoll.edu.

The views expressed in this paper are solely those of the author.

SARAH KNOWLES

SENIOR INTEGRATIVE PROJECT:
INTERNSHIP

ARCHITECTURAL STUDIES
CONNECTICUT COLLEGE
2012



CONNECTICUT
COLLEGE

Spring 2012
Connecticut College
Architectural Studies
ARC 496 : Internship

Sarah Knowles
Architectural
Studies Major
Class of 2012



New London Main Street



new london main street

- Located at 147 State St, New London, CT
- Mission: to preserve, enhance and promote the New London Historic Waterfront District
- Volunteer-driven organization
- Enrich the cultural fabric, preserve and enhance historic streetscapes and support and expand the economic base of the city center

New London Main Street is a nonprofit, volunteer-driven organization committed to revitalizing New London's historic downtown. The goal of Main Street is to build community through activities and programs that enrich the cultural fabric, preserve and enhance historic streetscapes and support and expand the economic base of the city center. It is one of five Main Street programs in Connecticut and is among the 1,200 programs nationwide developed from an initiative of the National Trust for Historic Preservation in the 1970's. Main Street receives strategic assistance from the [National Main Street Center](#) in Washington, DC and the [Connecticut Main Street Center](#) in Hartford. New London Main Street has been recognized as one of the top National Main Street Communities that meets the strict criteria set by the national program. It has consistently won statewide awards for its work and received numerous citations from the Governor's Office.

PROJECTS

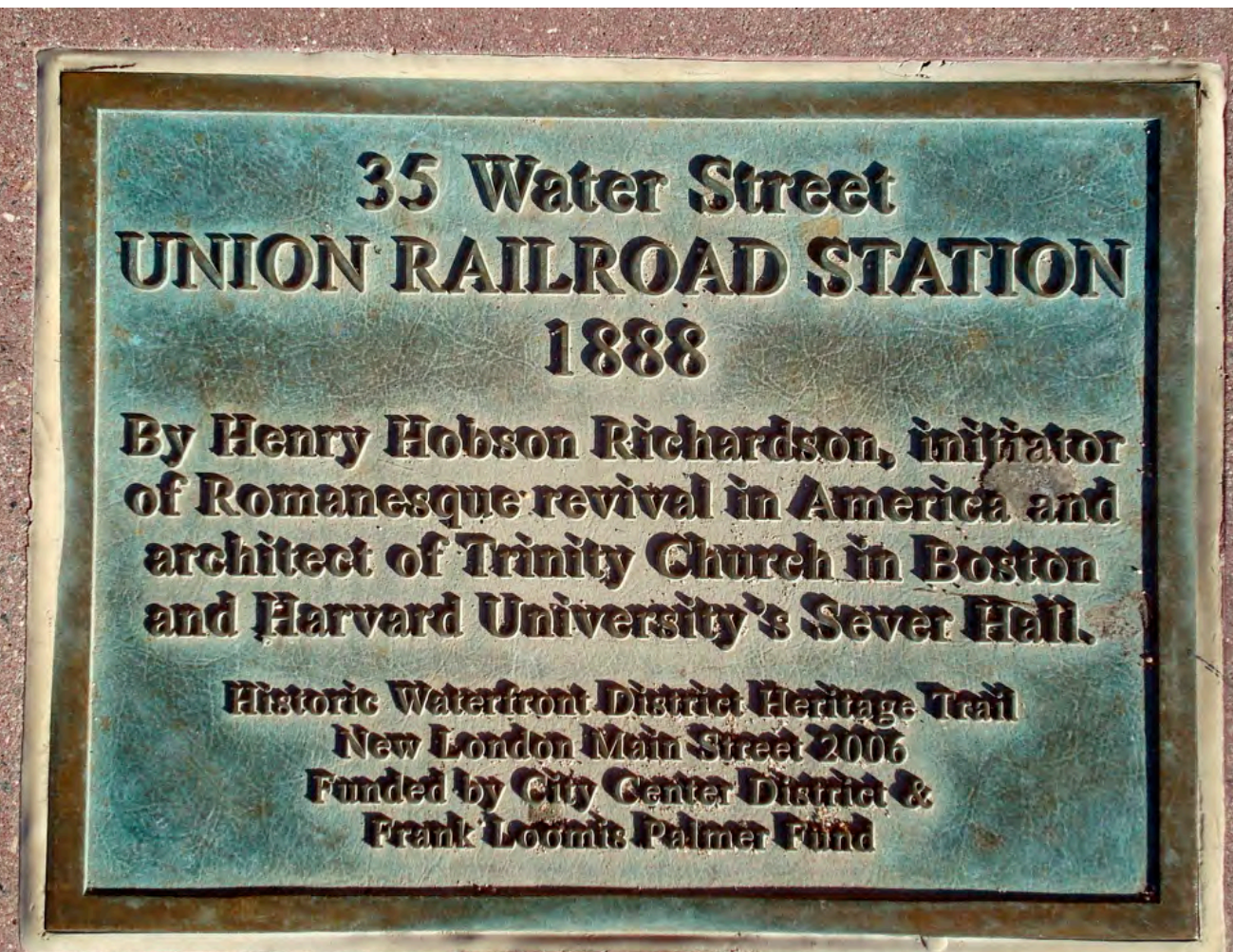
- The logo for foursquare, featuring the word "foursquare" in a stylized, rounded font. "four" is blue with a white outline, and "square" is green with a blue outline.
- the **New** **London** **Historic** **Waterfront** **Map** & **Guided** district
- New London Murals
- New London Architectural Details
- Special Events: **Mardi** **Gras**, The BIG Picture



Historic Waterfront District Heritage Trail



Architecturally Historic
Building



Bronze Plaque

“New London’s downtown consists of several designated Nation Register Historic Districts due to its many historically significant buildings and the stories they tell. These plaques, placed in front of specific sites, give a brief history of each of the historically significant buildings. A Heritage Trail of 30 bronze plaques, which can be found in the sidewalks, celebrate this rich history. Following the plaques, you will travel from Colonial times to the beginning of the 20th century.” I worked on incorporating technology into the Historic Waterfront District Heritage Trail by using the website Foursquare (<https://foursquare.com>).



Foursquare is a location-based social network site for smartphones that allows its user's to “check-in” to specific venues and connect with friends

Foursquare is a location-based social network site for smartphones that allows its users to “check-in” to specific venue and connect with friends. When users look for specific venues, they are able to read tips and see photographs that previous Foursquare users have left about that specific venue. For New London Main Street, I created a list on their Foursquare page (<https://foursquare.com/newlondonmainst>) titled “Historic Waterfront District Heritage Trail” to include the 30 historic sites and their plaques in the Waterfront District.



the district

new london historic waterfront



new london main street

Discover the fun, delicious, historic, scenic, cultural district, one check-in at a time.

New London's Historic Waterfront District--"The District" for short--is the hub of creative energy that gives the city its Top Ten rating among creative communities of its size in America. Art, music, and design venues, one-of-a-kind boutiques, and over 30 eateries populate this 26-block National Register Historic District in New London, Conn [Show more...](#)

[@newlondonmainst](#) [new london main street](#)
www.newlondonwaterfrontdistrict.org

You are already following new london main street! [Unfollow](#)

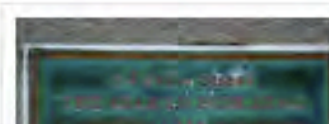
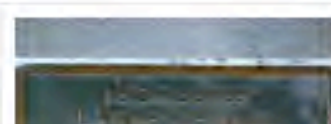
Followers (60 total)



If this page is inappropriate, [let us know](#).

Photos

[See all 29 photos](#)





Historic Waterfront District Heritage Trail

A Heritage Trail of 30 bronze plaques, which can be found in the sidewalks, celebrates New London's historically significant buildings from Colonial times through the beginning of the 20th century.



[new london main street](#)

30 items | Created Feb 15



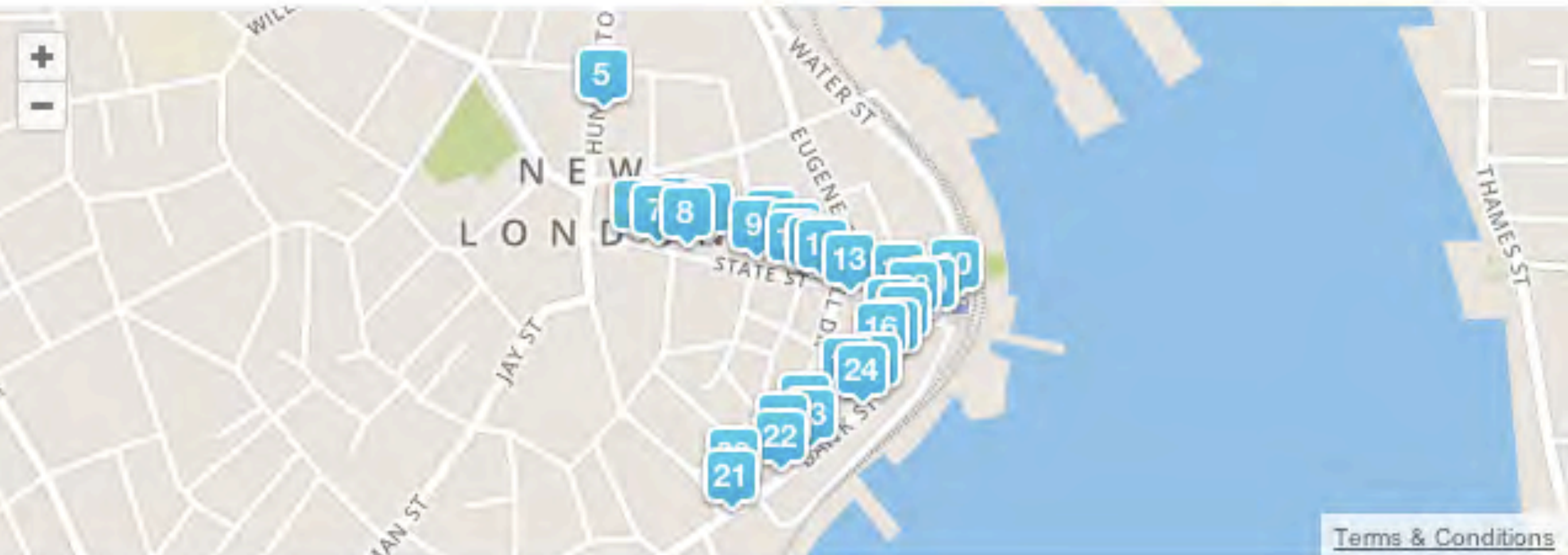
Share with Friends



Share via Facebook



Share via Twitter



[Terms & Conditions](#)

1. Heritage Trail Plaque - Harris Building,

1885 HISTORIC SITE

165 State St. New London, CT

"Built in the Richardsonian Romanesque Revival style in 1885 for Jonathan N. Harris, whose fortune was in patent medicine. The building once housed 31 offices, 8 apartments and a department store."
new london main street, February 17, 2012

Done by 2 people



2. Heritage Trail Plaque - City Hall HISTORIC SITE

181 State St, New London, CT

"Built in 1865 in the Italian style. Redesigned in 1913 in the Beaux-Arts style by James Sweeney. Inside, a wall mural shows New London as it looked in 1781 before Benedict Arnold set fire to the city."
new london main street, February 17, 2012

Done by 2 people



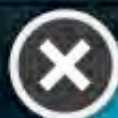
3. Heritage Trail Plaque - Lyric Hall, 1897 HISTORIC SITE

243 State St, New London, CT

"Lyric Hall, designed in 1897 by local architect James Sweeney, housed a theater and was then used as a dance hall. Its Neo-classical design is seen in the windows, ornamentation, and brickwork."
new london main street, February 17, 2012

Done by 2 people





new london main street says:

Since you're so close to Heritage Trail Plaque - Harris Building, 1885: Built in the Richardsonian Romanesque Revival style in 1885 for Jonathan N. Harris, whose fortune was in patent medicine. The building once housed 31 offices, 8 apartments and a department store.



ADD THIS TO MY TO DO LIST



I'VE DONE THIS

Welcome to the **FunDeliciousHistoricScenicCultural** district

home

dining&nightlife

shopping

arts&culture

heritage

outdoors

services

transportation

events

news

coupons

local map

about us

back

advertise here

Main Street Internship a great experience so far

[Share](#) | [f](#) [my](#) [g+](#) [t](#)

by Connecticut College senior Sarah Knowles

As an Architectural Studies major at [Connecticut College](#), I am required to complete a semester long internship my senior year within the field of architecture. With a passion for architectural history and preservation, I decided that working at New London Main Street would offer me the best opportunity to include my architectural passions within downtown New London. I have worked at New London Main Street for five weeks and have enjoyed every moment thus far.

The current project that I have been working on is incorporating technology into the Historic Waterfront District Heritage Trail by using the website Foursquare (<https://foursquare.com>). Foursquare is a location-based social network site for smartphones that allows its users to "check-in" to specific venues and connect with friends. When users look for specific venues, they are able to read tips and see photographs that previous Foursquare users have left about that specific venue. For New London Main Street, I created a list on their Foursquare page (<https://foursquare.com/newlondonmainst>) titled "Historic Waterfront District Heritage Trail" to include the 30 historic sites and their plaques in the Waterfront District.

The Historic Waterfront District Heritage Trail consists of 30 bronze plaques within the sidewalks of the waterfront district of New London. These plaques, placed in front of specific sites, give a brief history of each of the historically significant



theNewLondon HistoricWaterfront Map&Guidedistrict

theNewLondon
HistoricWaterfront
Map&Guidedistrict
New London, Connecticut

Dining

Cafés, Bakeries & Sweets

Atrium Café
165 State Street
860.437.0253
www.eastcoastcateringct.com
Breakfast and lunch (seasonal)

Bean & Leaf
13 Washington Street
860.701.0000
www.bean-leaf.com
Breakfast, brunch, lunch and dinner

Daniel’s Dairy Downtown
60 Bank Street
860.729.5823
www.danielsdairy.com
Ice cream and sweets

Lyric Café
243 State Street
860.440.3581
Breakfast, brunch and lunch

Muddy Waters
42 Bank Street
860.444.2232
Breakfast, brunch and lunch

Thames River Greenery & Beanery
70 State Street
860.443.6817
www.thamesriver.com
Breakfast and lunch

Clubs/Bar & Grills

Bank Street Roadhouse
36 Bank Street
860.443.8280
Lunch and dinner

Copperwood Grill
24 Eugene O’Neill Drive
860.440.0706
www.copperwoodgrill.com
Lunch and dinner

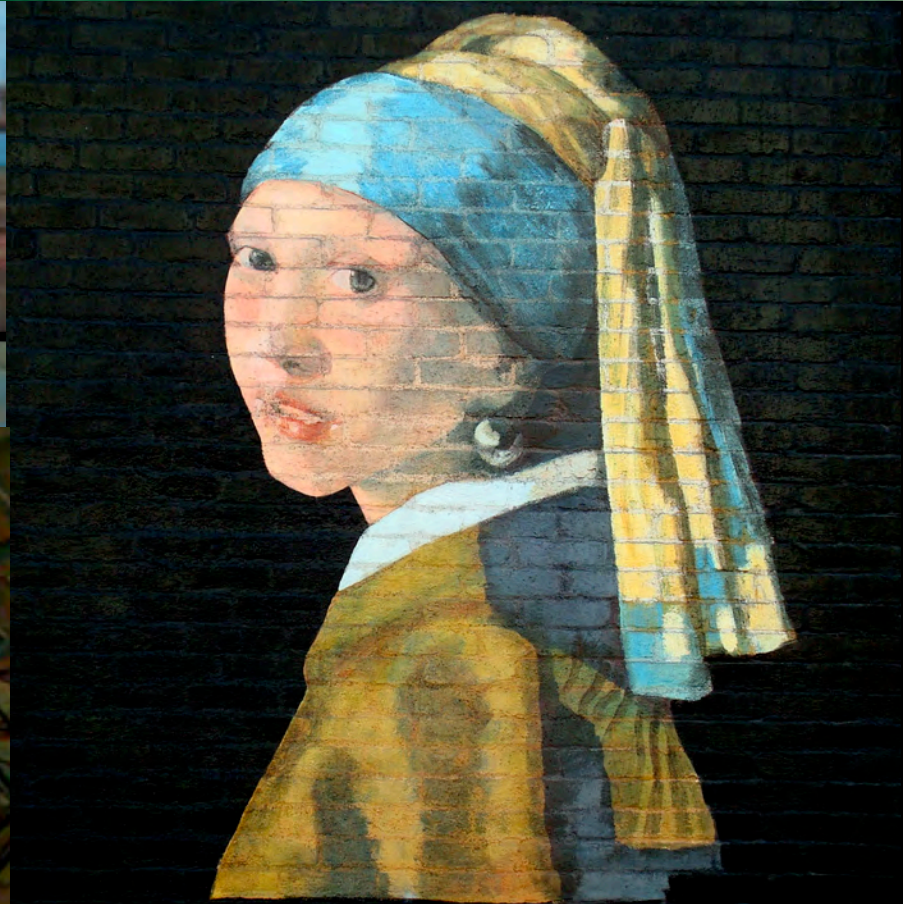
Dutch Tavern
23 Green Street
860.442.3453
Lunch only. Open evenings

El ‘N’ Gee
86 Golden Street
860.439.1033

Galley Bar & Grill
4 State Street
860.437.1113
Breakfast, brunch, lunch and dinner

Hanafin’s Public House
312 State Street
860.437.9724
www.hanafinpub.com
Lunch and dinner. Weekend breakfast

Hot Rod Café
114 Bank Street
860.447.2320
www.hotrodscafenewlondon.com
Lunch and dinner



New London Murals



Architectural Details in New London: Romanesque Revival



Welcome to the **FunDeliciousHistoricScenicCultural** district

◀ home

dining&nightlife

shopping

arts&culture

heritage

outdoors

services

transportation

events

news

coupons

local map

about us

◀ back

Architectural Elements in New London

[+ Share](#) | [f](#) [my](#) [g](#) [t](#)

By Sarah Knowles, New London Main Street Intern

Did you know...

New London's architectural style is immensely diverse with buildings ranging from colonial times to the twenty-first century? One architectural style that is prominent throughout New London is the Romanesque Revival, a style of building employed in the mid to late nineteenth century that references Romanesque architecture. Several buildings designed in the Romanesque Revival style in downtown New London include: Harris Building (1885), Union Railroad Station (1888), and New London Public Library (1892).



The most prominent and significant architect working in the Romanesque Revival style was Boston architect Henry Hobson Richardson (1838-1886). Because Richardson designed many of his building in the Romanesque Revival style, his architecture is often known as Richardsonian Romanesque. Richardsonian Romanesque emerged in the late nineteenth century and incorporated eleventh and twelve-century Romanesque architectural elements from France, Spain, and Italy. This "castle-like" style of architecture was popular in urban areas in the United States, like New London, from the late 1880s into the 1890s. Many Richardsonian Romanesque buildings have massive stone or brick walls, arched and arcaded entryways, and round-arch windows. These architectural elements were often associated with the prosperity and worldliness of the growing upper

new london main street's

Mardi Gras Masquerade Ball Fundraiser

at the New London Elks Club
81 Washington Street

**Saturday, February 25th
6:00pm - 10:00pm**

Come have a ball with us!

- Back by popular demand: Planet Zydeco dance band!
- Traditional Cajun & Creole food prepared by local restaurants: jambalaya, gumbo & more!
- Bid on fabulous auction items!
- Costumes & masks encouraged! Enter contests to win prizes!

Tickets: \$40 individual, \$75 a pair at the Main Street office at 147 State Street or on-line. For more information or to purchase tickets go to www.newlondonmainstreet.org. Questions? Call 860.444.2489




- Volunteered at New London Main Street's Annual Mardi Gras Masquerade Ball Fundraiser. It is one of their biggest fundraisers of the year.
- At the fundraiser I was in charge of selling raffle tickets. It was a big success!



Somaly Hay
and Co.



“New London poses for ‘Big Picture’”



<http://www.theday.com/article/20120405/MEDIA0101/120409818>

- The Big Picture is an annual event that takes place in downtown New London to bring together the local community for a photo.
- I went to the businesses downtown to help compile a gift basket for a raffle. I asked local businesses if they would be willing to donate items so we could promote them. The worth of the gift basket was approximately \$500. In order to win the basket you needed to have the closest guess to how many people were in the BIG picture.
- On the day of the Big Picture, it was my job to hand out stickers to all of the participants in order for us to get an estimate for how many people showed up. We had approximately 380 stickers. However, I ran out of stickers which meant we had over 380 people! Problematically, we had to count every single person in the photograph.

THANK YOU!



Total of 438 people in the photo!