

1-1-2012

Nina Cuccio Peck Architecture & Interiors

Tim Clark
Connecticut College

Follow this and additional works at: <http://digitalcommons.conncoll.edu/archstudintproj>

Recommended Citation

Clark, Tim, "Nina Cuccio Peck Architecture & Interiors" (2012). *Architectural Studies Integrative Projects*. Paper 49.
<http://digitalcommons.conncoll.edu/archstudintproj/49>

This Article is brought to you for free and open access by the Art History and Architectural Studies at Digital Commons @ Connecticut College. It has been accepted for inclusion in Architectural Studies Integrative Projects by an authorized administrator of Digital Commons @ Connecticut College.

For more information, please contact bpancier@conncoll.edu.

The views expressed in this paper are solely those of the author.

TIM CLARK

SENIOR INTEGRATIVE PROJECT:
INTERNSHIP

ARCHITECTURAL STUDIES
CONNECTICUT COLLEGE
2013



CONNECTICUT
COLLEGE



Spring 2013 Internship
Tim Clark



Nina Cuccio Peck Architecture and Interiors



NCP Architects

Internship Goals

1. Learn AutoCad
2. Become involved in design development/client meetings
 - Only partially possible
3. Create and maintain a set of working drawings
4. Do not work on window schedules

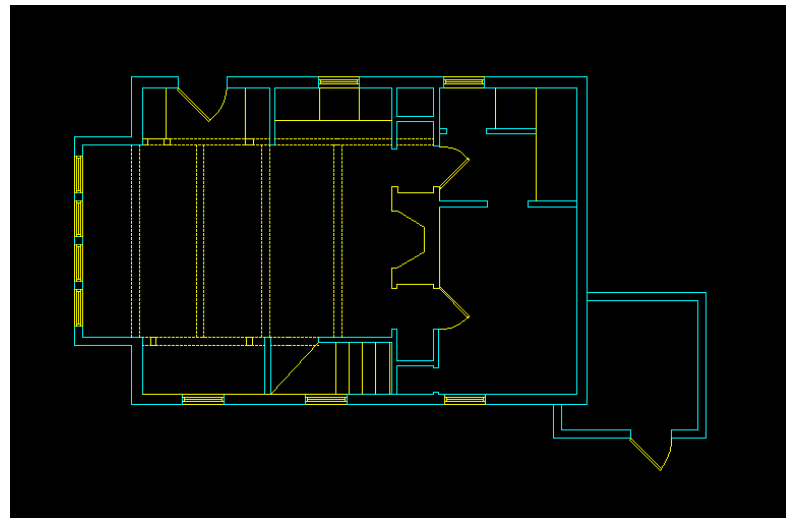
Responsibilities



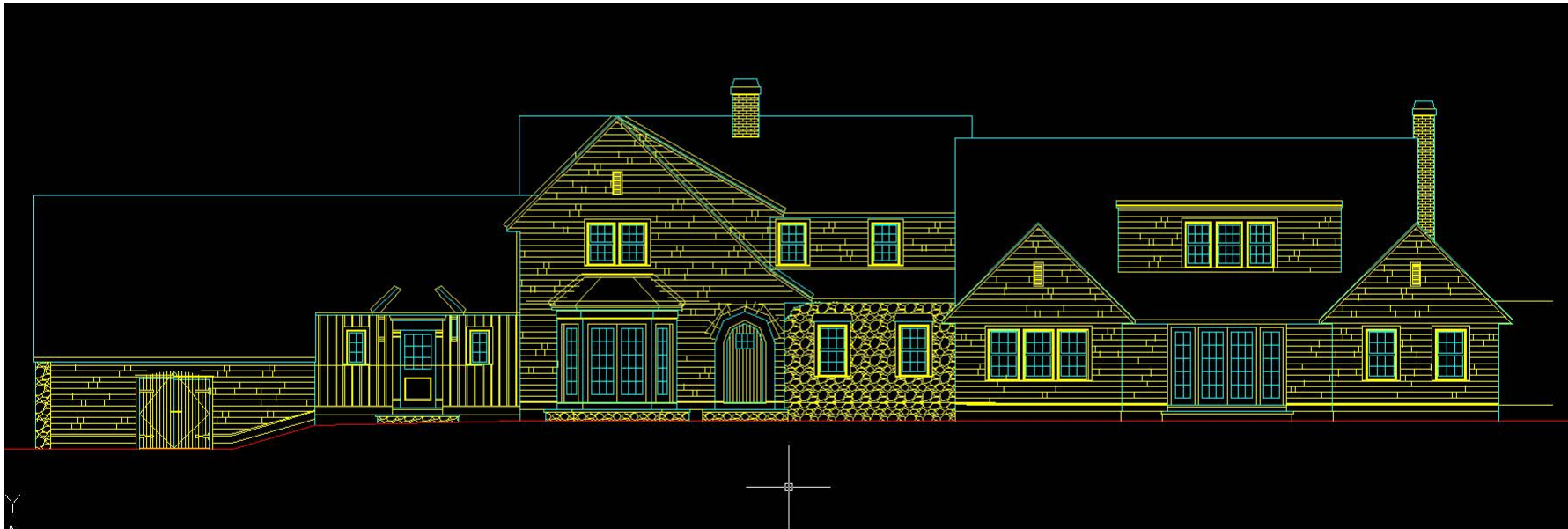
Measuring/Site Survey



Design Development



Production of Working Drawings



Client: Roger Brown Study Collection
 1926 North Halsted Chicago IL 60614

Conducted by: SAIC Historic Preservation
 Graduate Conservation Studio, Fall 2010

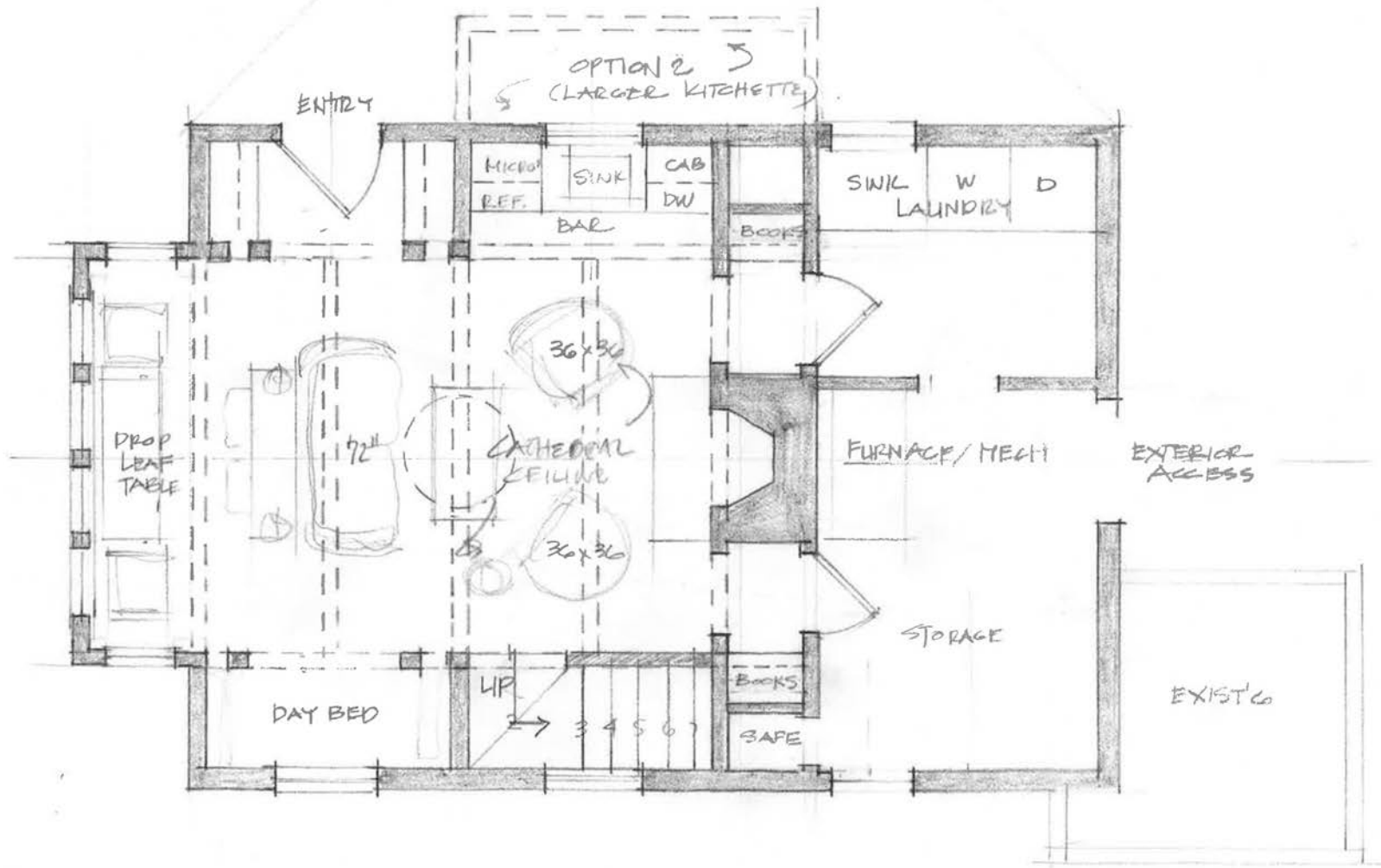
WINDOW RESTORATION SCHEDULE Pg. 1/2

Window Location	Window Type	Description	Storm Window			Lifts			Locks				Sash Cords		Covering		Infill		Condition: Frame			Condition: Sash		Comments	Recommendations	
			Present?	Material	Storm Dimens Wash	Present?	Qty.	Location	Present?	Qty.	Type	Location	Present?	Material	Int/Ext	Material	Type	Cracked Y/N	SH	Jamba	Head	Top	Bottom			
			Left	Right	Left	Right	Left	Right	Left	Right	Left	Right	Left	Right	Left	Right	Left	Right	Left	Right						
T101	INACC.	3'-1" x 3'-4"	No	N/A	N/A	No	0	N/A	No	N/A	N/A	N/A	N/A	N/A	Ext	Wire	Phwood	N/A	B,C,E,K,W	B,C,E,K,W	B,C,E,K,W	B,C,E,K,W	B,C,E,K,W	B,C,E,K,W	Window has unpainted plywood infill	2, 5, 22
T102	INACC.	2'-1" x 3'-4"	No	N/A	N/A	No	0	N/A	No	N/A	N/A	N/A	N/A	Ext	Wire	N/A	N/A	B,C,E,K,M,Q	B,C,E,K,M,Q	B,C,E,K,M,Q	B,C,E,K,M,Q	B,C,E,K,M,Q	B,C,E,K,M,Q	Original window not visible but believed to be present behind wire mesh and storm window	2, 5, 6, 16, 22	
T103	D	4'-11 1/2" x 2'-0"	No	N/A	N/A	No	0	N/A	No	N/A	N/A	N/A	N/A	N/A	Clear	No	B,C,D	B,C,D	B,C,D	B,C,D	B,C,D	B,C,D	B,C,D	Window cover material operable. Putty in missing at some edges	2, 7, 10, 11, 19, 22	
T104	A	2'-9 3/4" x 7'-2 1/2"	Yes	Wood	2'-9" x 7'-11 1/2"	No	0	N/A	Yes	2	Clam	offset from center	N/A	N/A	Clear	No	B	A, B, C	A, B, C	A, B, C	A, B, C, D	A, B, C, D, S	A, B, C, D, S	Sash cords painted but still balanced	1, 2, 7, 10, 11, 19, 22	
T105	A	2'-9 3/4" x 7'-2 1/2"	Yes	Wood	2'-9" x 7'-11 1/2"	No	0	N/A	Yes	1	Clam	Left	1/1Y	Rope	N/A	N/A	Clear	No	B	A, B, C	A, B, C	A, B, C	A, B, C, D	A, B, C, D, S	Sash cords painted	1, 2, 7, 10, 11, 19, 22
T106	A	2'-10" x 7'-3"	Yes	Wood	2'-9" x 7'-10 1/2"	No	0	N/A	Yes	1	Spring	Center	N/Y	Rope	N/A	N/A	Clear	No	A, B, C, K	B, C, U	B, C, U	A, B, C	A, B, C, D, G, J	A, B, C, D, S	Sashes unbalanced and painted shut	1, 2, 7, 10, 11, 15, 19, 22
T106a	C	2'-10 1/4" x 2'-0"	No	N/A	N/A	No	0	N/A	No	0	N/A	N/A	N/A	N/A	Clear	No	A, B, C, K	B, C, U	B, C, U	A, B, C	A, B, C, D, E	N/A	N/A	Interior not flush with frame - leaning inward and painted in place	1, 2, 3, 7, 10, 20, 22	
T107	A	INACCESS.	Yes	Wood	2'-9" x 7'-9"	N/A	N/A	N/A	N/A	N/A	N/A	N/A	N/A	N/A	N/A	N/A	N/A	N/A	N/A	N/A	N/A	N/A	B, C, D	B, C, D, G	Interior window inaccessible	1, 2, 15, 22
T108	A	2'-2" x 7'-6"	No	N/A	N/A	N/A	N/A	N/A	N/A	N/A	N/A	N/A	N/A	N/A	Ext	Wire	Clear	No	N/A	N/A	N/A	N/A	B,C,E,D,R	B,C,E,D,R	inges with no screws; not operable.	1, 2, 6, 22
T109	B	1'-6" x 5'-6"	No	N/A	N/A	N/A	N/A	N/A	N/A	N/A	N/A	N/A	N/A	N/A	Bubble	No	N/A	N/A	N/A	N/A	N/A	B,H,D	B,H,D	Interior window inaccessible	1, 2, 4, 5, 13, 22	
T110	B	INACCESS.	No	N/A	N/A	N/A	N/A	N/A	N/A	N/A	N/A	N/A	N/A	N/A	Ext	Wire	N/A	N/A	N/A	N/A	N/A	B,C,D,M	B,C,D,M	Inaccessible	1, 2, 4, 5, 8, 13, 22	
T112a	A	NOT SURVEYED	No	N/A	N/A	N/A	N/A	N/A	N/A	N/A	N/A	N/A	N/A	N/A	N/A	N/A	N/A	N/A	N/A	N/A	N/A	N/A	N/A	N/A	Not surveyed - Inaccessible	N/A
201	A	2'-9" x 6'-5"	Yes	Alum	N/A	Yes	2	R, L	Yes	1	Clam	Left	1/1Y	Chain	N/A	N/A	Clear	T, top L	A, B, K	A, B	A, B	A, B	A, B	A, B, G		1, 7, 15, 18, 22
202	A	2'-9" x 6'-5"	Yes	Alum	N/A	Yes	2	R, L	Yes	1	Eastlake	Right	1/1N	Chain	N/A	N/A	Clear	No	A, B	A, B	A, B	A, B	A, B, J	A, B, J		1, 7, 10, 11, 18, 22
203	A	2'-9" x 6'-5"	Yes	Alum	N/A	No	0	N/A	No	0	N/A	N/A	1/1N	Rope	N/A	N/A	Clear	No	A	J, G	J, G	A	A, G, J	A, G, J, T	Unable to see exterior, overall good condition	1, 2, 10, 11, 12, 15, 18, 22
204	A	2'-9" x 6'-5"	Yes	Alum	N/A	No	0	N/A	No	0	N/A	N/A	N/A	N/A	Clear	No	A	J, O	J, O	A	A, J	A, J	A, L, L	A, L, L	Unable to see exterior, missing all hardware	1, 2, 9, 10, 11, 12, 18, 22
205	A	2'-9" x 6'-5"	Yes	Alum	N/A	No	0	N/A	No	0	N/A	N/A	1/1Y	Rope	Int	Plateglass	Clear	T, lower L	A	O	O	A	A, G	A, G	Plateglass screwed onto bottom sash	1, 9, 11, 12, 17, 18, 22
206	A	2'-8" x 8'-5"	Yes	Alum	2'-4 1/2" x 8'-4"	No	0	N/A	Yes	1	Eastlake	Right	N/A	N/A	Clear	No	B	A, B, C, F, D	A, B, C, F, D	A, B, C, F, D	A, B, C, D, J	A, B, C, D, N, G, R	A, B, C, D, N, G, R	Plateglass screwed onto bottom sash, no hardware around the edge	1, 2, 5, 7, 9, 10, 11, 15, 17, 18, 22	
T206a	D	2'-7 1/2" x 1'-4"	No	N/A	N/A	No	0	N/A	No	0	N/A	N/A	N/A	N/A	Clear	No	N/A	B, C, U	B, C, U	B, C, U	B, C, D, E	N/A	N/A	Outward transom with no signs that it was ever operational	2, 18, 22	
207	A	2'-8" x 8'-5"	Yes	Alum	2'-4 1/2" x 8'-4"	No	0	N/A	Yes	1	Eastlake	Right	1/1Y (check)	Rope	Int	Plateglass	Clear	T, lower R	A, B, C, F, D	A, B, C, F, D	A, B, C, F, D	A, B, C, D, J	A, B, C, D, S	Over-caulking around interior muntins	1, 2, 4, 7, 9, 11, 12, 18, 22	
208	A	6'-4 1/4" x 2'-9"	Yes	Alum	N/A	No	0	N/A	No	0	N/A	N/A	1/1Y	Rope	Int	Plateglass	Clear	No	A, B, E, F, R	A, B, F, L	A, B, K	A, B	A, B, E, I	A, B, E, K, R, T		1, 2, 4, 6, 7, 9, 11, 12, 18, 22
209	B	4'-5 3/4" x 5'-6 1/4"	Yes	N/A	N/A	Yes	1	Center	N/A	N/A	N/A	N/A	N/A	N/A	Frosted	N/A	N/A	N/A	N/A	N/A	N/A	N/A	R	R		8, 12, 18, 22
211	A	6'-4 1/4" x 2'-9"	Yes	Alum	N/A	Yes	1	Center	Yes	1	Clam	Center	1/1Y	Chain	Int	Plateglass	Clear	No	A	A	A	A	N	N, I		1, 12, 17, 18, 22
212	B	2'-3" x 6'-7"	Yes	Alum	N/A	Yes	1	Center	Yes	1	Clam	Center	N/N	N/A	N/A	N/A	Clear	No	E, K, O	J, O	O	O	O	O		1, 2, 7, 10, 17, 22
213	B	2'-7" x 6'-11"	No	N/A	N/A	Yes	2	R, L	Yes	1	Clam	Center	1/1N	Chain	N/A	N/A	Clear	No	B, K	N, C, D, E, F, K, V	R, K	N/A	N/A	N/A		1, 2, 3, 4, 6, 7, 10, 17, 20, 22
214	B	3'-0" x 6'-9"	No	N/A	N/A	Yes	2	R, L	Yes	1	Clam	Center	1/1Y	Chain	N/A	N/A	Substn	No	A	N/A	N/A	N/A	A, D, E, V	N/A		1, 2, 7, 10, 13, 22
215	B	3'-0" x 6'-9"	No	N/A	N/A	Yes	3	R, L	Yes	1	Clam	Center	1/1Y	Chain	N/A	N/A	Clear	No	A	N/A	N/A	N/A	A, D, S, V	N/A		1, 2, 7, 10, 13, 22

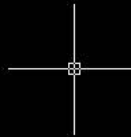
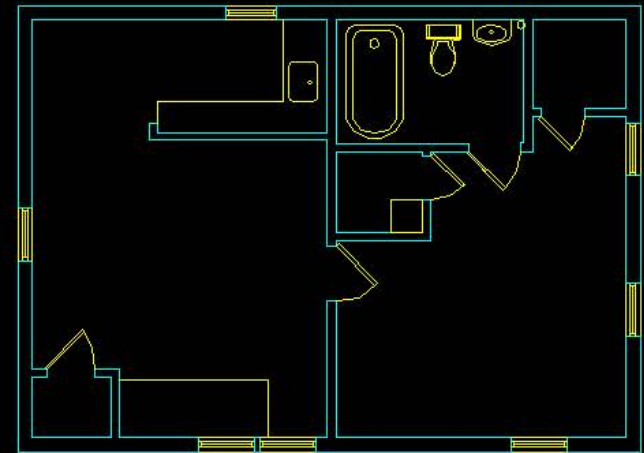
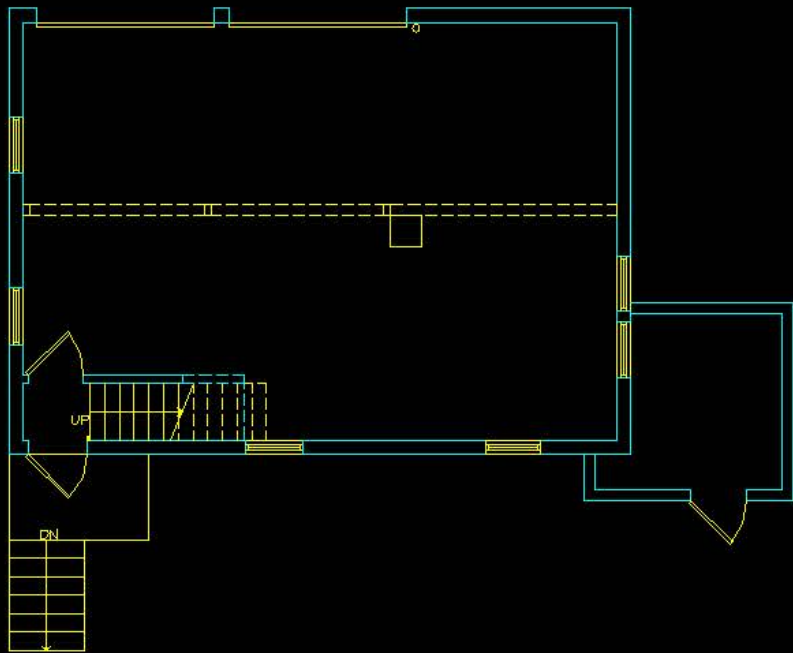
Project I: Window Schedules



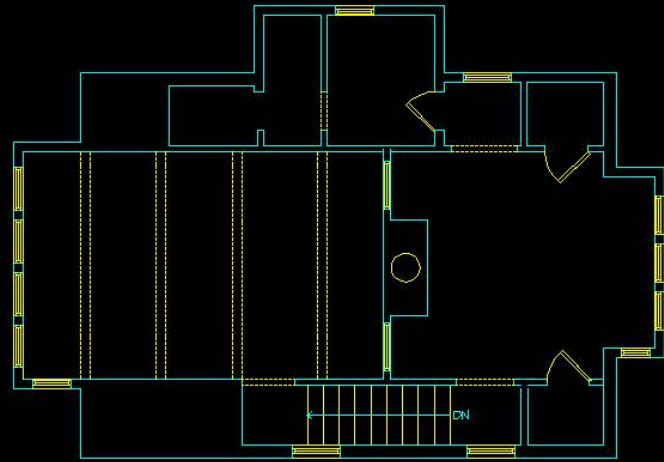
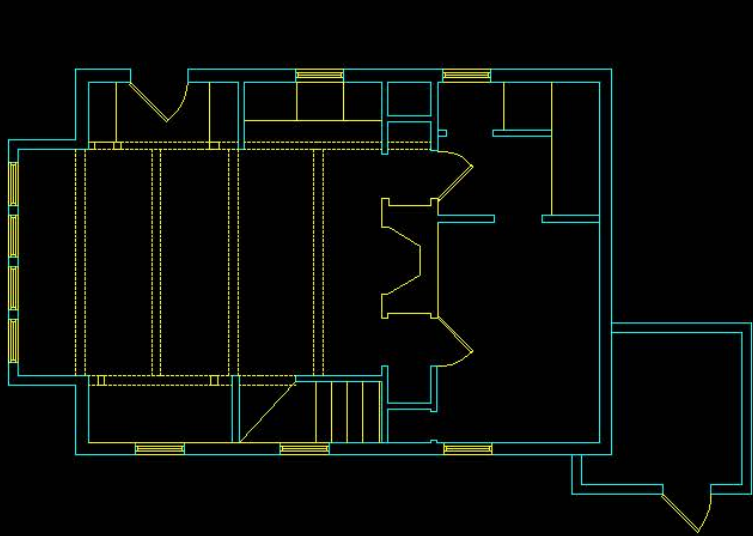
Project 2: Carriage House, New Canaan, CT



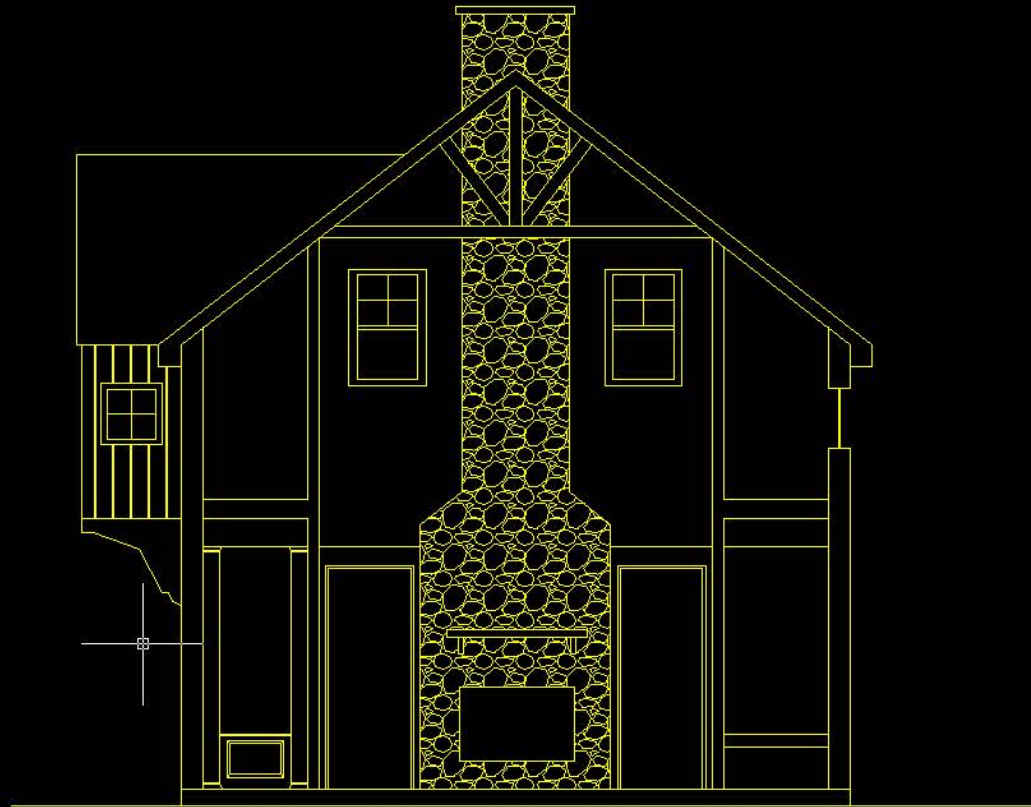
Design Development



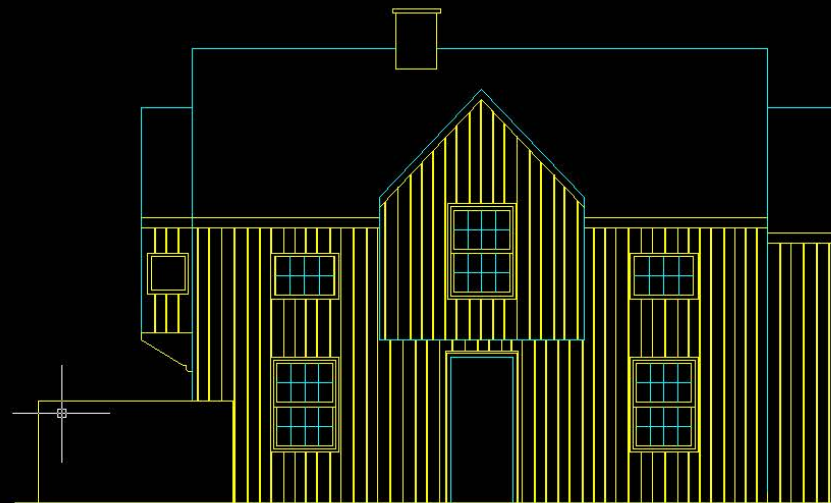
Working Drawings: Original Floor Plans



Working Drawings: Proposed Floor Plans



Section: Proposed



Elevations: Proposed



contact: <http://www.ncparch.com/>
ncparch@sbcglobal.net

Spring 2013 Internship
Tim Clark