

2013

TLB Architecture, Chester, Conn.

Devin Maloney
Connecticut College

Follow this and additional works at: <http://digitalcommons.conncoll.edu/archstudintproj>

Recommended Citation

Maloney, Devin, "TLB Architecture, Chester, Conn." (2013). *Architectural Studies Integrative Projects*. Paper 46.
<http://digitalcommons.conncoll.edu/archstudintproj/46>

This Article is brought to you for free and open access by the Art History and Architectural Studies at Digital Commons @ Connecticut College. It has been accepted for inclusion in Architectural Studies Integrative Projects by an authorized administrator of Digital Commons @ Connecticut College.

For more information, please contact bpancier@conncoll.edu.

The views expressed in this paper are solely those of the author.

DEVIN MALONEY

SENIOR INTEGRATIVE PROJECT:
INTERNSHIP

ARCHITECTURAL STUDIES
CONNECTICUT COLLEGE
2013



CONNECTICUT
COLLEGE

ARCHITECTURAL STUDIES INTEGRATIVE PROJECT

INTERNSHIP AT TLB ARCHITECTURE
CHESTER, CT

Devin Maloney
Connecticut
College
Summer 2012

TLB ARCHITECTURE

- Medium-Size Architectural Firm (12 employees)
- Works primarily with colleges/universities, corporate clients, and not-for profit clients (such as Yale University, Pfizer, & Local Municipalities)



WORK ENVIRONMENT



- Open Studio Environment that Encourages the Architects to Collaborate
- Open Studio Environment Made the Architects Very Approachable
 - Felt Comfortable Going Over to Any of the Architects to Ask Questions Relating to My Work or Talk to Them About Their Projects

MY ROLE AS AN INTERN

- Organizing the Sample Room
 - Using the 16 Divisions of Construction and Their Sections
- Organizing the Design Archives
- Going on Site Visits with the Architects
- Assisting the Architects with Small Tasks
 - Editing PDF's using CutePDF, Working on Drawings in AutoCAD, Organizing Licensing Study Materials, Field Work, Preparing Sets to be Sent Out for Permitting
- Attending Weekly Staff Meetings
 - Architects Give a Progress Report of the Projects On Which They are Working
- Attending LED Lighting Lunch and Learn
- Performing Administrative Tasks Such as Answering the Phone



MATERIAL SAMPLE ROOM

MATERIAL SAMPLE ROOM

- My First Task Was to Organize the Material Sample Room
 - Organized Using the 16 Divisions of Construction Which Are Further Divided Into Sections
 - Worked With the Architects to
 - Decide What Was the Best Way to Organize the Space to Meet Their Needs
 - Decide What Material Samples Were Outdated
 - Learn About the Use of Specific Materials, Assemblies, and Technologies
 - Also Interacted with Outside Product Vendors to Gather the Latest Product Information



16 DIVISIONS OF CONSTRUCTION

- Division 1: General Requirements
 - Materials and Equipment
 - Project Meetings
 - Quality Control
- Division 2: Sitework
 - Landscaping
 - Paving and Surfacing
 - Site Furnishings
- Division 3: Concrete
 - Cast-in-Place Concrete
 - Precast Concrete
- Division 4: Masonry
 - Brick
 - Mortar and Grout
 - Unit Masonry
- Division 5: Metals
 - Decorative Formed Metals
 - Pipe and Tube Railings
 - Structural Metal Framing
- Division 6: Wood and Plastics
 - Exterior and Interior Finished Carpentry
 - Ornamental Woodwork
 - Plastic-Laminate-Faced Wood Paneling
 - Rough Carpentry
 - Surfaces
- Division 7: Thermal and Moisture Protection
 - Insulation
 - Metal Wall Panels
 - Fireproofing
 - Roofing
 - Siding
 - Waterproofing
- Division 8: Doors and Windows
 - Door Hardware
 - Doors
 - Entrances
 - Glazing
 - Windows

16 DIVISIONS OF CONSTRUCTION CONTINUED

- Division 9: Finishes
 - Acoustical Treatment
 - Carpet
 - Ceiling
 - Flooring
 - Painting
 - Tile
 - Wallcovering
- Division 10: Specialties
 - Lockers
 - Partitions
 - Signage
 - Visual Display Surfaces
- Division 11: Equipment
 - Gymnasium Equipment
 - Laboratory Equipment
- Division 12: Furnishings
 - Laboratory Casework
 - Office Furniture
 - Window Coverings
- Division 13: Special Construction
 - Boiler
 - Cold Storage
 - Metal Building Systems
 - Vibration and Shock Control
- Division 14: Conveying Systems
 - Elevators
- Division 15: Mechanical
 - Drinking Fountains
 - Heating, Ventilation, and Air Conditioning
 - Plumbing
 - Sanitary Waste Piping Specialties
- Division 16: Electrical
 - Lighting

Before



MATERIAL SAMPLE ROOM



After

The logo consists of two vertical rectangular blocks. The left block is a large orange rectangle containing the text 'DESIGN ARCHIVES' in white. The right block is a narrower, dark brown rectangle.

DESIGN ARCHIVES

DESIGN ARCHIVES



- My Second Task Was to Organize the Design Archives
 - TLBA is Required by Law to Keep Archives Of All Projects For Seven Years After Substantial Completion
 - Worked With the Staff to
 - Learn the TLBA Design Archive File System
 - Decide What Was the Best Way to Organize the Space to Meet Their Needs
 - Decide What Archived Projects Could Be Thrown Away
 - Decide What Was the Best Way to Record Information on an Existing Excel Spreadsheet

CONTENTS OF A PROJECT' S DESIGN ARCHIVE

- Internal Project Management
- Site Information
- Code Search and Programming
- Final Program & Present to Owner
- Construction Budgets
- Design & Specification Data
- Correspondence with Owner, Contractor
- Owner-Contractor Legal/Financial
- Testing Laboratory Reports
- Material and Color Selections
- Architect/Engineer Field Reports
- Proposal Requests
- Allowances
- Submittals During Bidding
- Agenda
- Supplemental Instructions
- Bidding
- Correspondence with Consult & Others
- Meeting Reports During Design Process
- Shop Drawings

Before



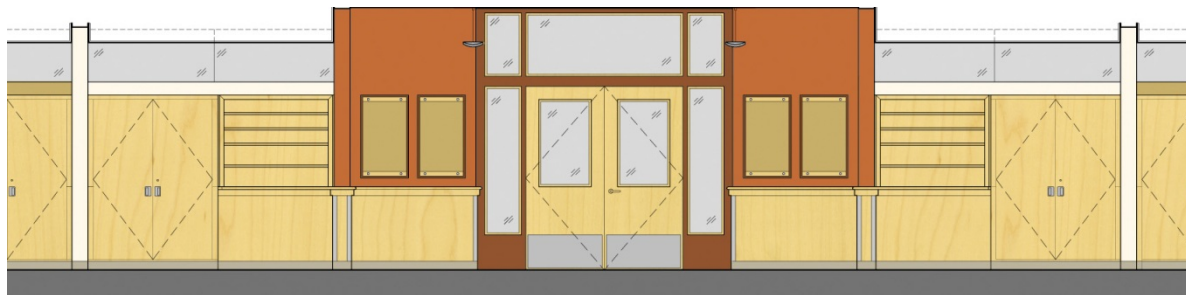
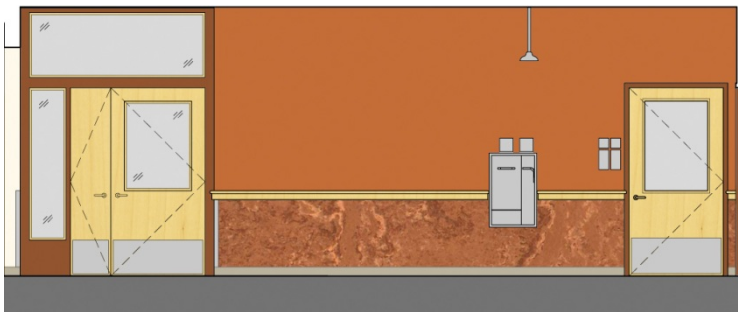
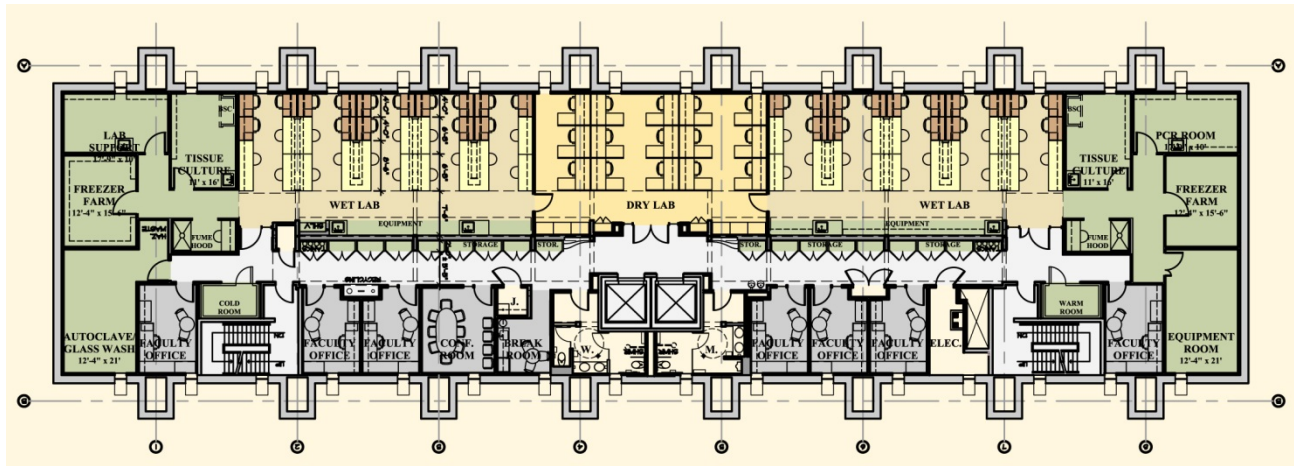
DESIGN ARCHIVES



After



SITE VISITS



YALE UNIVERSITY SCHOOL OF MEDICINE Laboratories of Epidemiology and Public Health 7th Floor Renovation

New Haven, CT

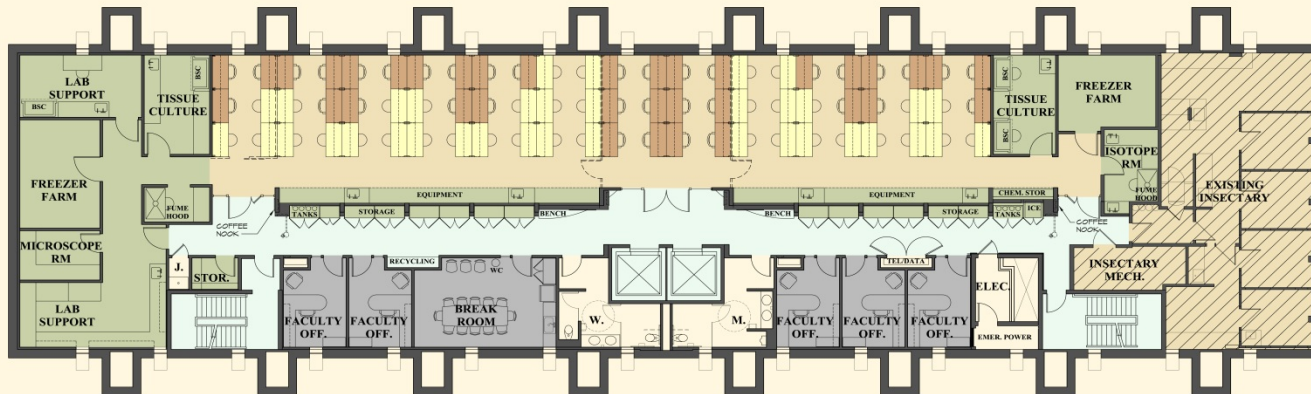
Permission Granted to Use Images by TLBA



YALE
UNIVERSITY
SCHOOL OF
MEDICINE
Laboratories
of
Epidemiology
and Public
Health 7th
Floor
Renovation

New Haven, CT

Permission Granted to Use Images by TLBA

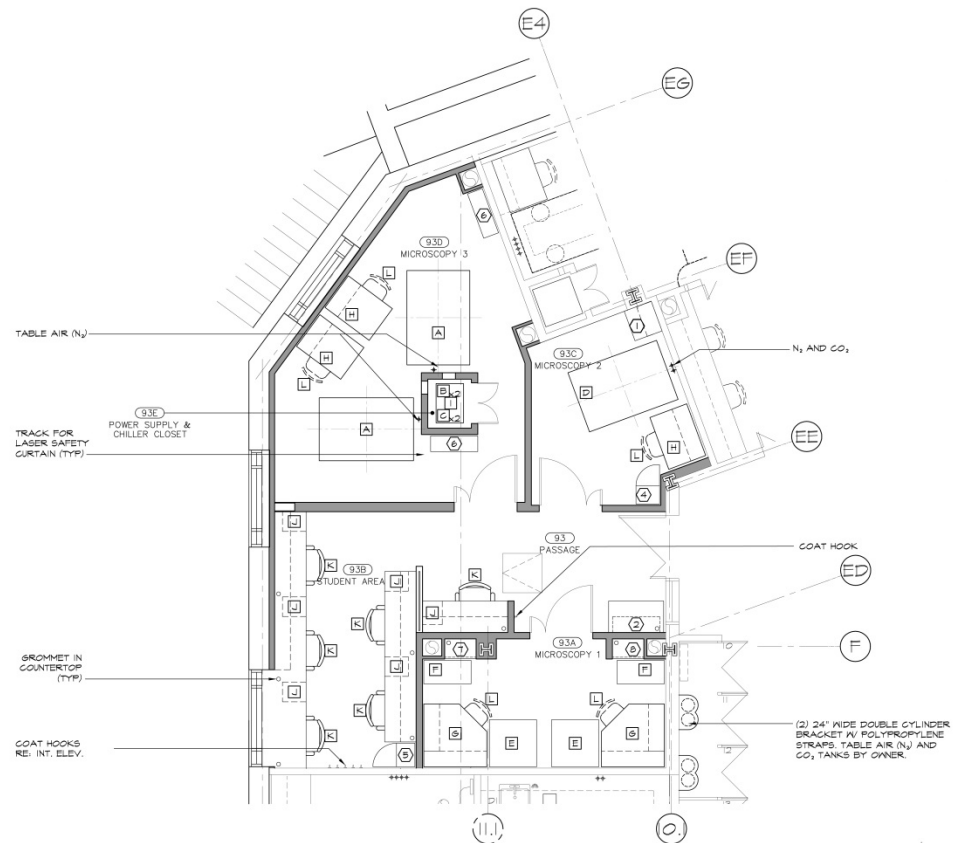


Permission Granted to Use Images by TLBA

YALE UNIVERSITY SCHOOL OF MEDICINE

Laboratories
of
Epidemiology
and Public
Health 6th
Floor

New Haven, CT



YALE UNIVERSITY SCHOOL OF MEDICINE Microscope Suite in Sterling Hall

New Haven, CT

Permission Granted to Use Images by TLBA



YALE
UNIVERSITY
SCHOOL OF
MEDICINE
Microscope
Suite in
Sterling Hall

New Haven, CT



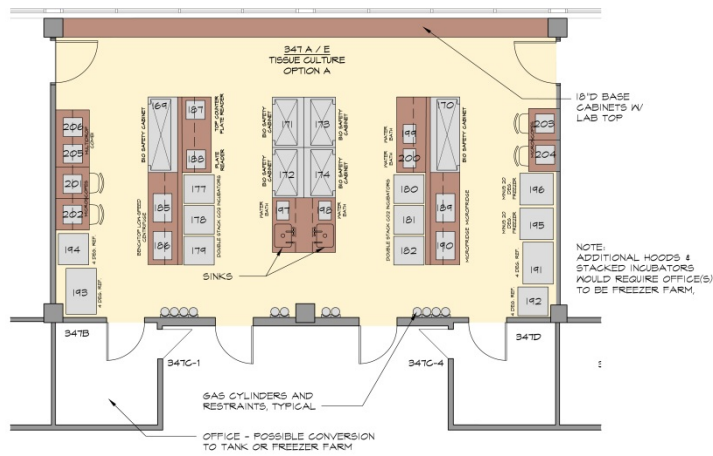
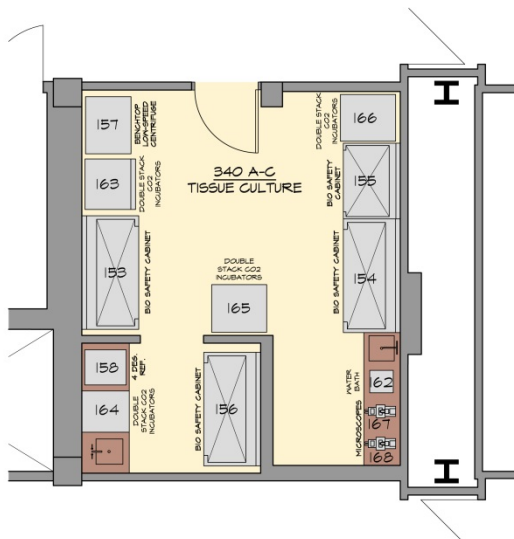
HAMMONASSET
BEACH STATE
PARK

Beach
Services
Building

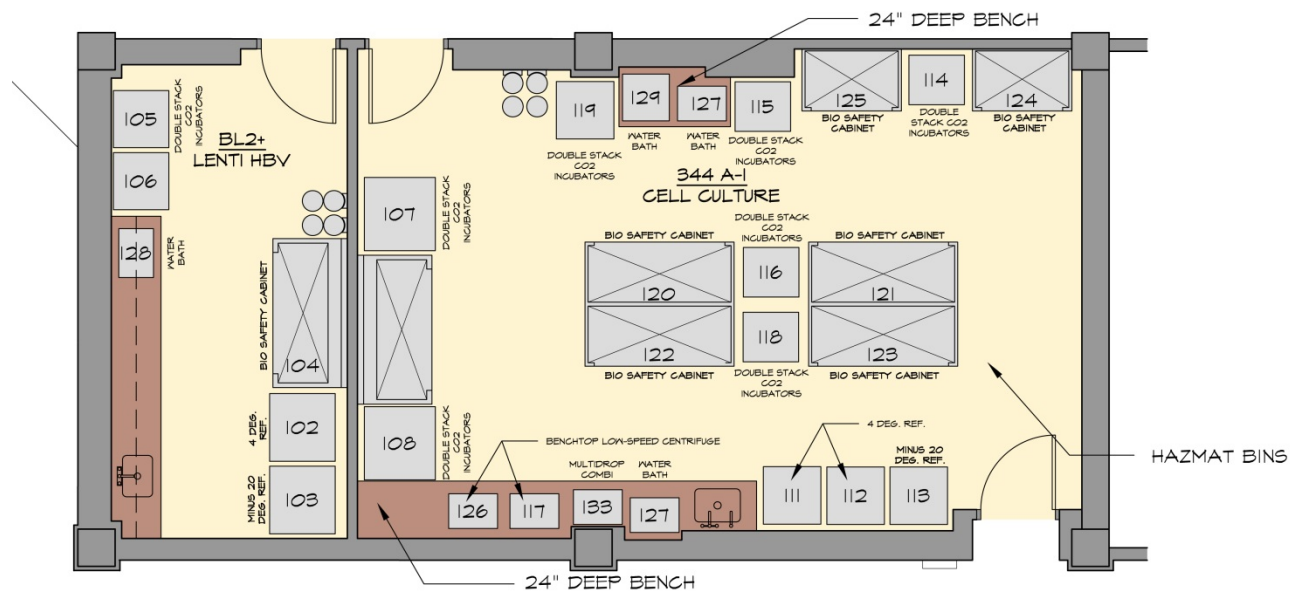
Madison, CT



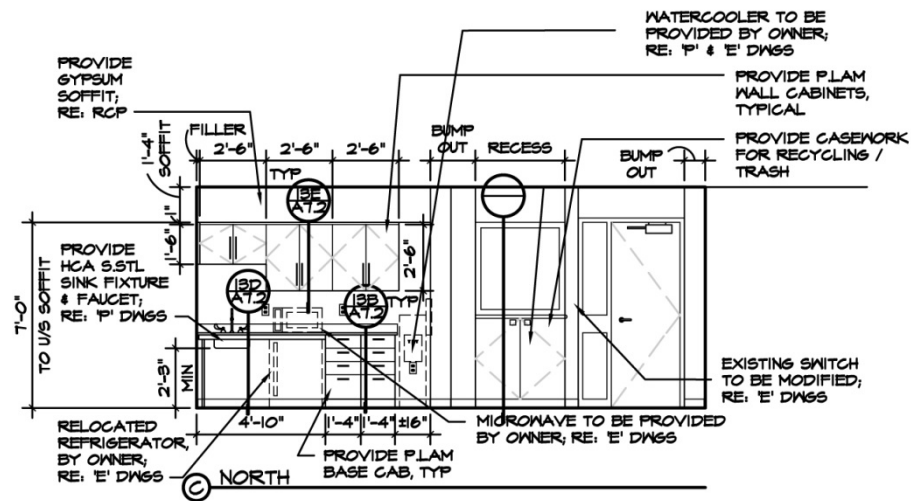
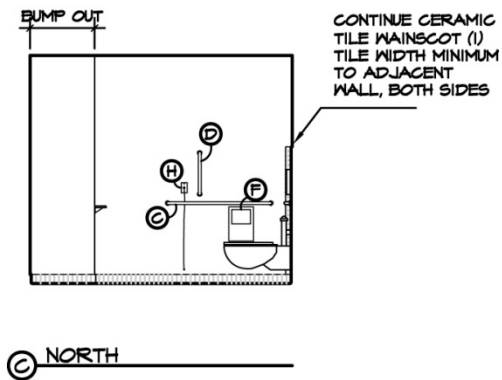
AUTOCAD



PHARMACEUTICAL LAB



ACADEMIC
LAB





LUNCH AND LEARN

LED LIGHTING

- History of LED Lighting
- Thermal Management
 - LED Lights Produce Heat Which Needs to Be Vented Away From the Lighting Fixture Because It Leads to a Shorter Life Span of the LED Lights
- Affordability of LED Lighting
 - How the Price of LED Lighting Compares to Fluorescent Lighting
- LED Lighting Makes Color Appear Closer to It's True Color
 - Fluorescent Lighting Makes Colors Look Darker Than They Really Are
- LED Lights Do Not Emit UV Light
 - Places Such as Grocery Stores Are Switching to This Type of Lighting Because Produce Will Not Wilt as Fast as It Does Under Fluorescent Lighting



WHAT I LEARNED

- 16 Divisions of Construction and Their Sections
- Use of Specific Materials, Assemblies, and Technologies
- About the Projects TLBA is Currently Working On
- Elements of Lab Design
- About LED Lighting
- Developed Proficiency in Reading Architectural Drawings
- How Architects Represent Their Design Ideas
- About the Design Process From Start to Finish
- What Documents Architects Are Required to Keep For Liability Reasons

CONTACT INFORMATION

Timothy Brewer, AIA
TLB Architecture, LLC.
92 West Main Street
Chester, CT 06412
(860) 526-9448
tlba@tlbarchitecture.com