

2014

## UK Architects

Natalie Clark  
*Connecticut College*

Follow this and additional works at: <http://digitalcommons.conncoll.edu/archstudintproj>

---

### Recommended Citation

Clark, Natalie, "UK Architects" (2014). *Architectural Studies Integrative Projects*. Paper 57.  
<http://digitalcommons.conncoll.edu/archstudintproj/57>

This Article is brought to you for free and open access by the Art History and Architectural Studies at Digital Commons @ Connecticut College. It has been accepted for inclusion in Architectural Studies Integrative Projects by an authorized administrator of Digital Commons @ Connecticut College.

For more information, please contact [bpancier@conncoll.edu](mailto:bpancier@conncoll.edu).

The views expressed in this paper are solely those of the author.

NATALIE CLARK

SENIOR INTEGRATIVE PROJECT:  
INTERNSHIP

ARCHITECTURAL STUDIES  
CONNECTICUT COLLEGE  
2014



CONNECTICUT  
COLLEGE



*Our designs create lasting value by enhancing the way people live and interact, by promoting workplace efficiencies and productiveness, and by contributing to a community's character and service to its members.*

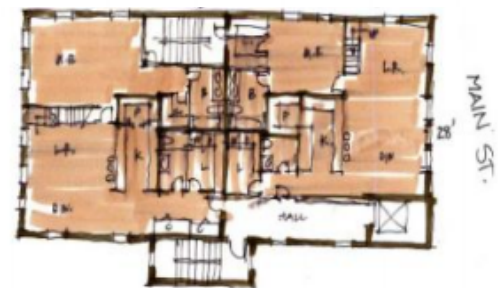
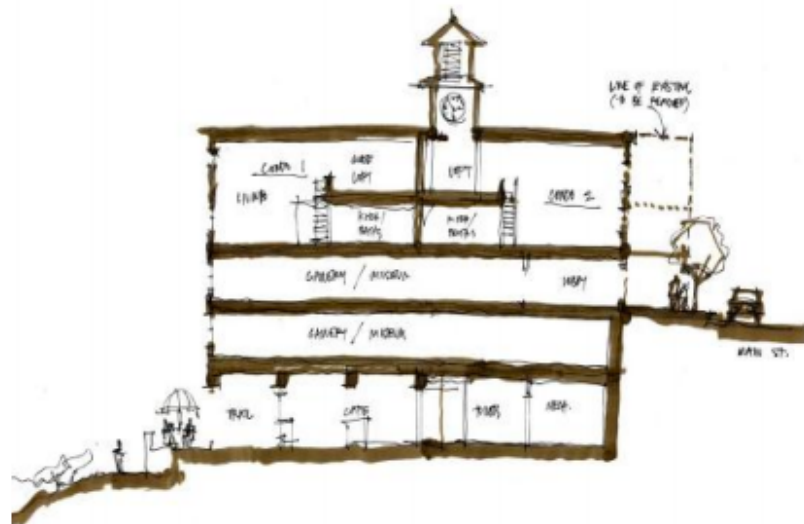




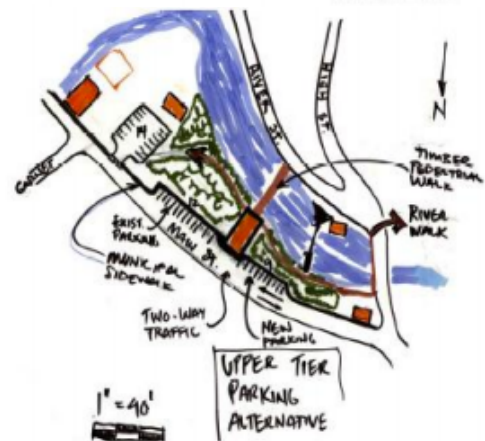






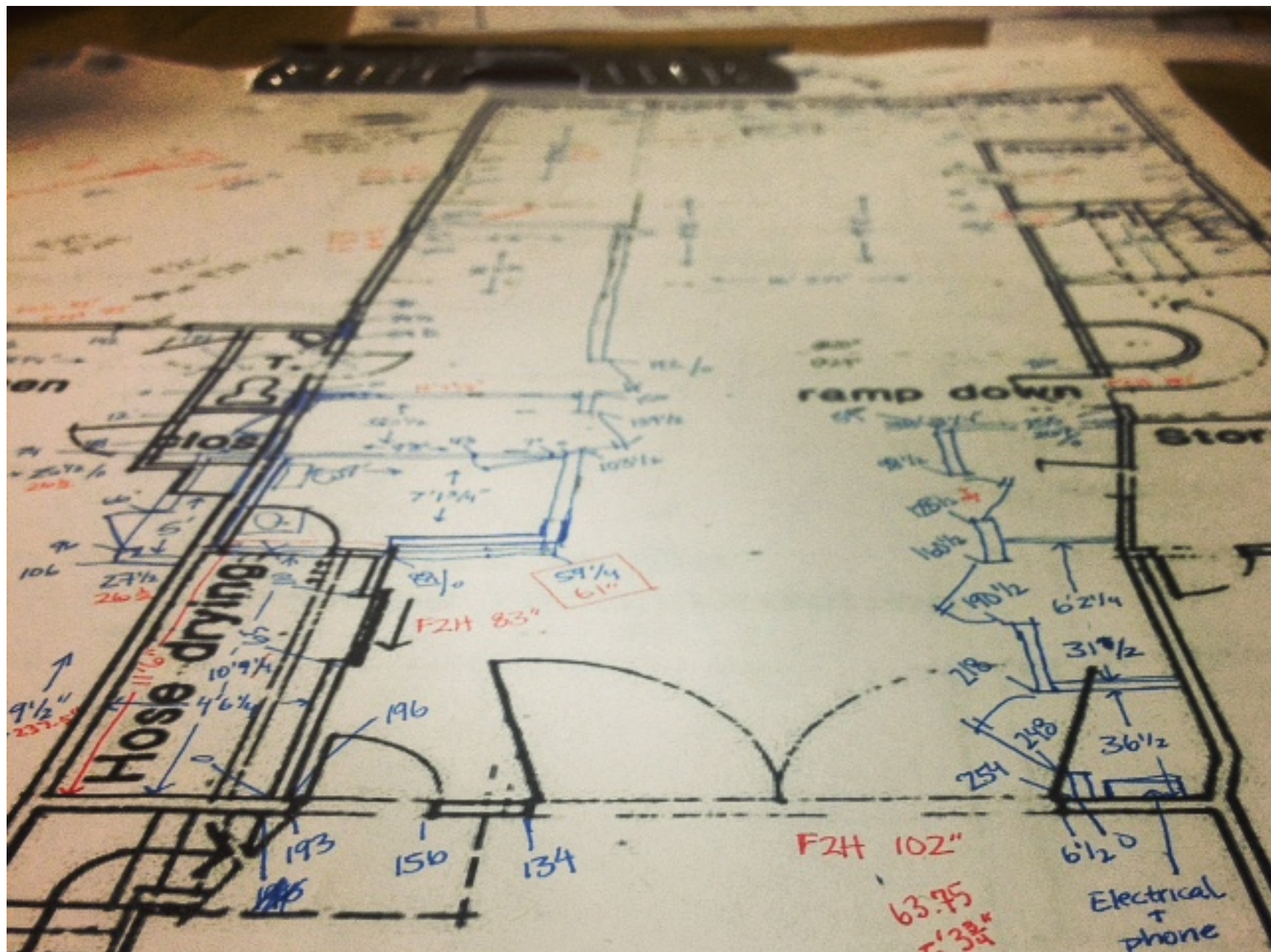


RESIDENTIAL  
ALTERNATIVE



UPPER TIER  
PARKING  
ALTERNATIVE





**Table 4.1.1 Fire Resistance Ratings for Type I through Type V Construction (hr)**

	Type I		Type II			Type III		Type IV	Type V	
	442	332	222	111	000	211	200	2HH	111	000
<b>Exterior Bearing Walls<sup>a</sup></b>										
Supporting more than one floor, columns, or other bearing walls	4	3	2	1	0 <sup>b</sup>	2	2	2	1	0 <sup>b</sup>
Supporting one floor only	4	3	2	1	0 <sup>b</sup>	2	2	2	1	0 <sup>b</sup>
Supporting a roof only	4	3	1	1	0 <sup>b</sup>	2	2	2	1	0 <sup>b</sup>
<b>Interior Bearing Walls</b>										
Supporting more than one floor, columns, or other bearing walls	4	3	2	1	0	1	0	2	1	0
Supporting one floor only	3	2	2	1	0	1	0	1	1	0
Supporting roofs only	3	2	1	1	0	1	0	1	1	0
<b>Columns</b>										
Supporting more than one floor, columns, or other bearing walls	4	3	2	1	0	1	0	H	1	0
Supporting one floor only	3	2	2	1	0	1	0	H	1	0
Supporting roofs only	3	2	1	1	0	1	0	H	1	0
<b>Beams, Girders, Trusses, and Arches</b>										
Supporting more than one floor, columns, or other bearing walls	4	3	2	1	0	1	0	H	1	0
Supporting one floor only	2	2	2	1	0	1	0	H	1	0
Supporting roofs only	2	2	1	1	0	1	0	H	1	0
<b>Floor-Ceiling Assemblies</b>	2	2	2	1	0	1	0	H	1	0
<b>Roof-Ceiling Assemblies</b>	2	1½	1	1	0	1	0	H	1	0
<b>Interior Nonbearing Walls</b>	0	0	0	0	0	0	0	0	0	0
<b>Exterior Nonbearing Walls<sup>c</sup></b>	0 <sup>b</sup>	0 <sup>b</sup>	0 <sup>b</sup>	0 <sup>b</sup>	0 <sup>b</sup>	0 <sup>b</sup>	0 <sup>b</sup>	0 <sup>b</sup>	0 <sup>b</sup>	0 <sup>b</sup>

H: heavy timber members (see text for requirements).

<sup>a</sup>See NFPA 5000, 7.3.2.1.

<sup>b</sup>See NFPA 5000, Section 7.3.

<sup>c</sup>See 4.3.2.12, 4.4.2.3, and 4.5.6.8.

[5000: Table 7.2.1.1]





JUST  
AREO





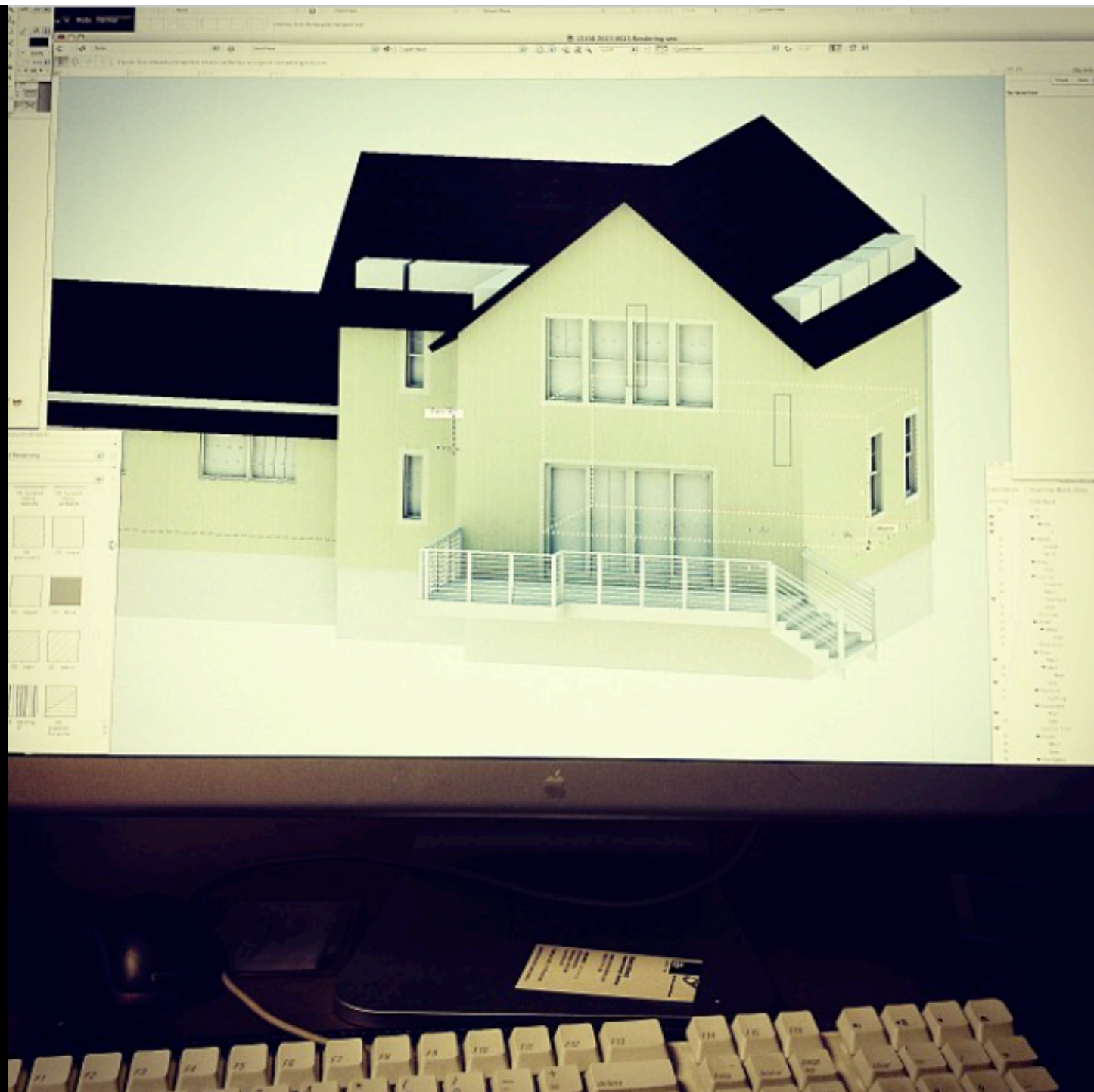
*Vibrant, livable, and sustainable communities*



# Vermont Council on Rural Development

















# Dartmouth HEALTH CONNECT

A Dartmouth-Hitchcock/Iora Health **Primary Care Practice**

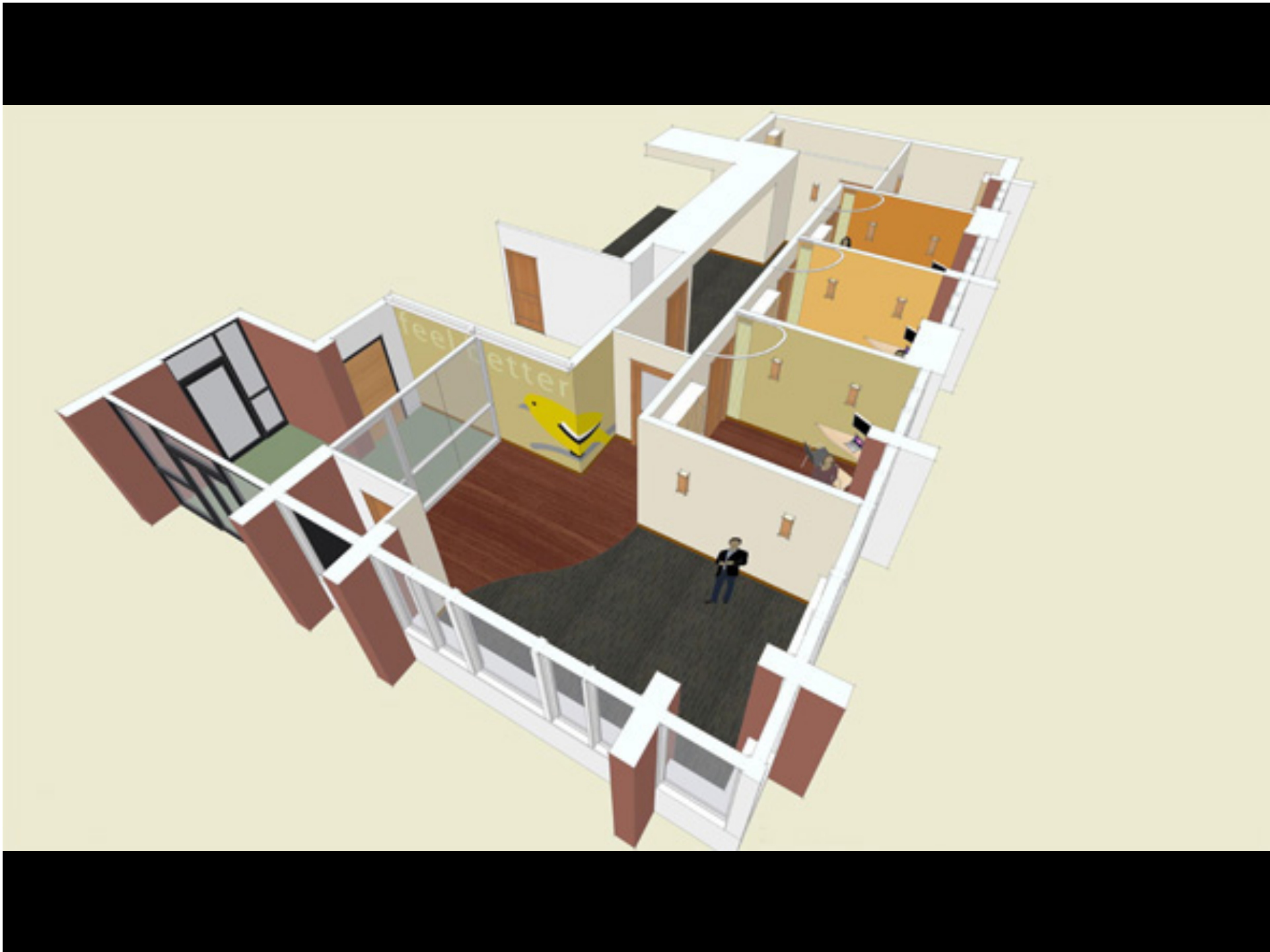
BUSKEY

1978

DEDICATED TO  
RAYMOND F. BUSKEY  
D.D.S.  
NORTH DARTMOUTH  
VINEY













[ABOUT US](#) | [NEWS](#) | [PROJECTS](#) | [CONTACT](#)

UK ARCHITECTS, PC



[NEWS](#) | [Community Market Wins 2011 Plan NH Merit Award of Excellence](#) | [BLOG](#)



*Building Community*

[www.ukarch.com](http://www.ukarch.com)