

2014

Olson Lewis and Architects

John Williamson
john.williamson@conncoll.edu

Follow this and additional works at: <http://digitalcommons.conncoll.edu/archstudintproj>

Recommended Citation

Williamson, John, "Olson Lewis and Architects" (2014). *Architectural Studies Integrative Projects*. Paper 53.
<http://digitalcommons.conncoll.edu/archstudintproj/53>

This Article is brought to you for free and open access by the Art History and Architectural Studies at Digital Commons @ Connecticut College. It has been accepted for inclusion in Architectural Studies Integrative Projects by an authorized administrator of Digital Commons @ Connecticut College.

For more information, please contact bpancier@conncoll.edu.

The views expressed in this paper are solely those of the author.

JACK WILLIAMSON

SENIOR INTEGRATIVE PROJECT:
INTERNSHIP

ARCHITECTURAL STUDIES
CONNECTICUT COLLEGE
2014



CONNECTICUT
COLLEGE



JACK WILLIAMSON

OLSONLEWIS.COM

Olson Lewis and Architects

- Small/ Medium architectural firm in Manchester Massachusetts
- Specializing in Education, Bio-Tech, Hospitality, Institutional



Immersion

- The fundamental design process of the firm
- Not only creating coherent and functional environments, but taking the time to understand the needs of all those who will be utilizing the space and making sure to best serve the many needs

Art Dioli

- Third principal brought into firm
- Specializing in Residential and Educational Project
- Lead on Pingree Arts and Athletics additions





Responsibilities







- Marketing/ rebranding, design, interior design, pitch books, client relations, attend project meetings, project data collection, photo editing, social media, staging homes for photo shoots, filing

Rebranding






Social Media

 PHOTOS PRODUCTS FIND A PRO  Ideabooks  Advice  Upload   Sign In

KITCHEN BATH BEDROOM LIVING DINING OUTDOOR KIDS OFFICE STORAGE EXTERIOR LIGHTING DECOR MORE...



Follow

+




Profile

Overview

Ideabooks

Photos



Reviews

Badges

OLSON LEWIS + Architects

★★★★★ 2 Reviews | [Review me >](#)

 (978) 704-6268  olsonlewis.com

Services Provided




We are a full service Architectural Design and Interior Design firm. In addition to our award-winning residential practice, we also design for Educational, Biotech, Life Sciences, and Hospitality industries.

Areas Served

World Wide . . . with a focus on the North Shore of Boston and all of New England.

Business Description

[Read More](#) ▾

7 Ideabooks

22 Projects

12 Posts

North Shore Architects

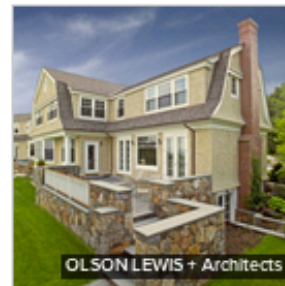
Type:

Architects & Designers

Address

17 Elm Street,
[Manchester](#), Massachusetts,
United States, 01944

Idea Books



Outdoor patio with rock wall.



Project Albums



Classic Meets Eclectic



Classic Meets Eclectic



Classic Meets Eclectic



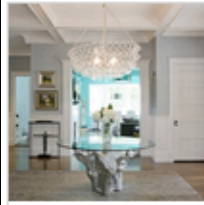
Classic Meets Eclectic



Classic Meets Eclectic



Classic Meets Eclectic



Classic Meets Eclectic



Classic Meets Eclectic



Classic Meets Eclectic



Classic Meets Edictic



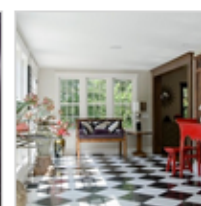
Classic Meets Eclectic



Classic Meets Eclectic



Classic Meets Eclectic



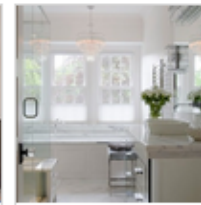
Classic Meets Eclectic



Classic Meets Eclectic



Classic Meets Eclectic



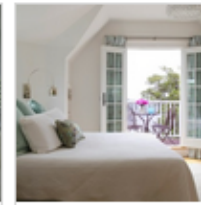
Classic Meets Eclectic



Classic Meets Edictic



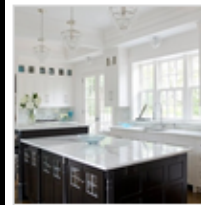
Classic Meets Eclectic



Classic Meets Eclectic



Classic Meets Edictic



Classic Meets Eclectic



Classic Meets Eclectic



Classic Meets Eclectic

Staging



Pingree Arts and Athletics

- In 2005 OL+ designed a new academic wing
- Final stage of project is arts and athletics expansion





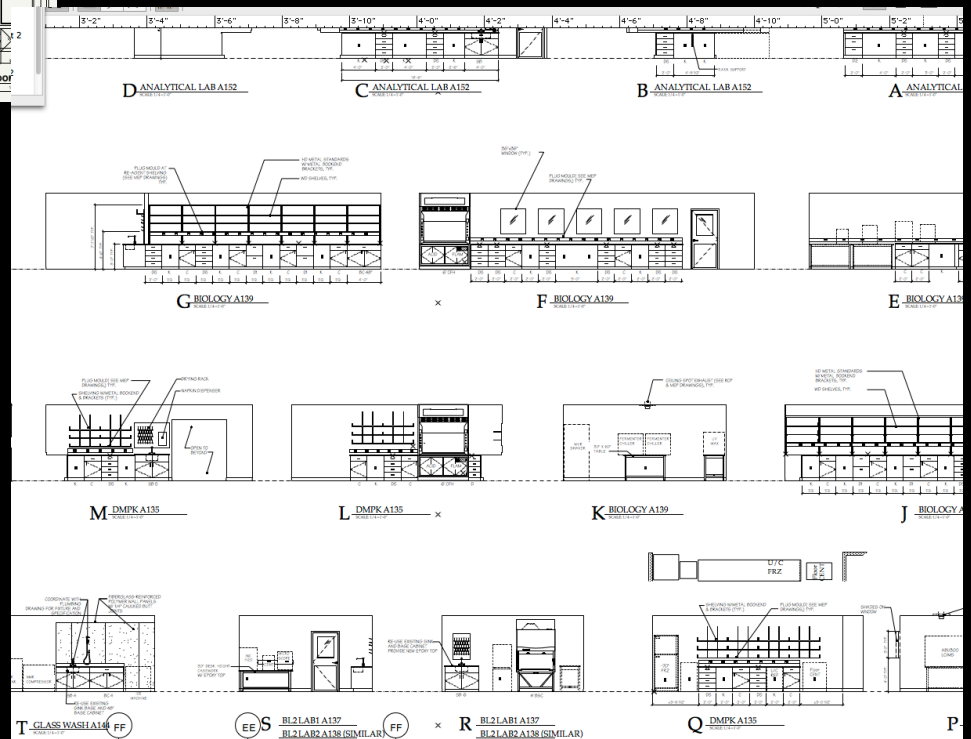
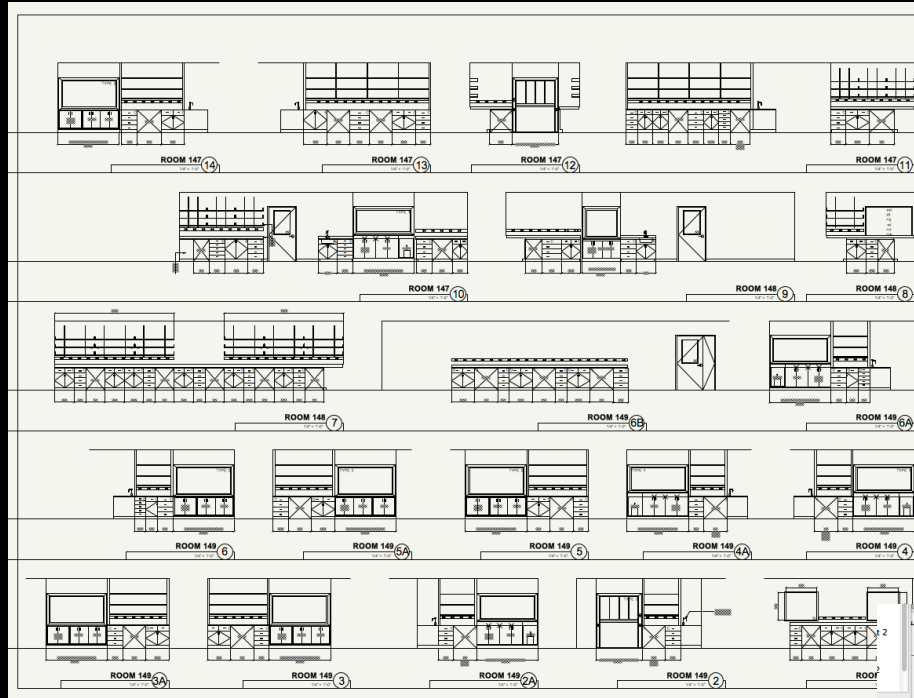
Pingree School

Arts and Athletics Expansion Project



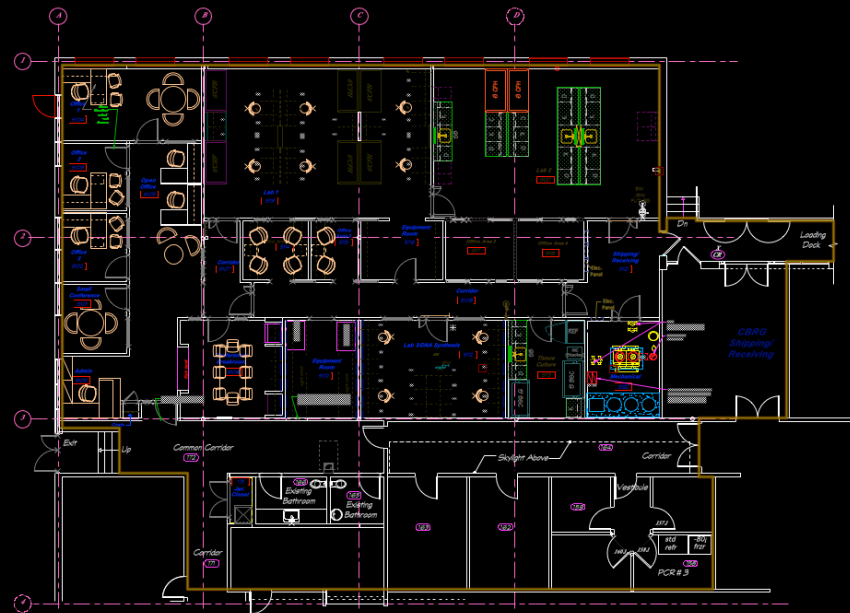
Ulrich Bochand Landscape Architecture, LLC
www.ub-la.com • 77 Main St., Wrentham, MA 01984 • 617-337-3252





Interior Design



[illegible]

Lessons

- Business sense is important
- Drafting is very tedious
- Communication
- Staying on Schedule doesn't happen
- Neither does staying under budget

