

2014

George Penniman Architects LLC

Ava Foster
ava.foster@conncoll.edu

Follow this and additional works at: <http://digitalcommons.conncoll.edu/archstudintproj>

Recommended Citation

Foster, Ava, "George Penniman Architects LLC" (2014). *Architectural Studies Integrative Projects*. Paper 63.
<http://digitalcommons.conncoll.edu/archstudintproj/63>

This Article is brought to you for free and open access by the Art History and Architectural Studies at Digital Commons @ Connecticut College. It has been accepted for inclusion in Architectural Studies Integrative Projects by an authorized administrator of Digital Commons @ Connecticut College.

For more information, please contact bpancier@conncoll.edu.

The views expressed in this paper are solely those of the author.

AVA FOSTER

SENIOR INTEGRATIVE PROJECT:
INTERNSHIP

ARCHITECTURAL STUDIES
CONNECTICUT COLLEGE
2014



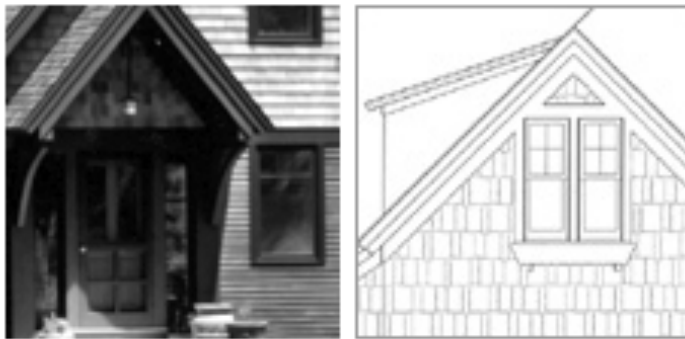
CONNECTICUT
COLLEGE

SENIOR INTEGRATED PROJECT: George Penniman Architects LLC



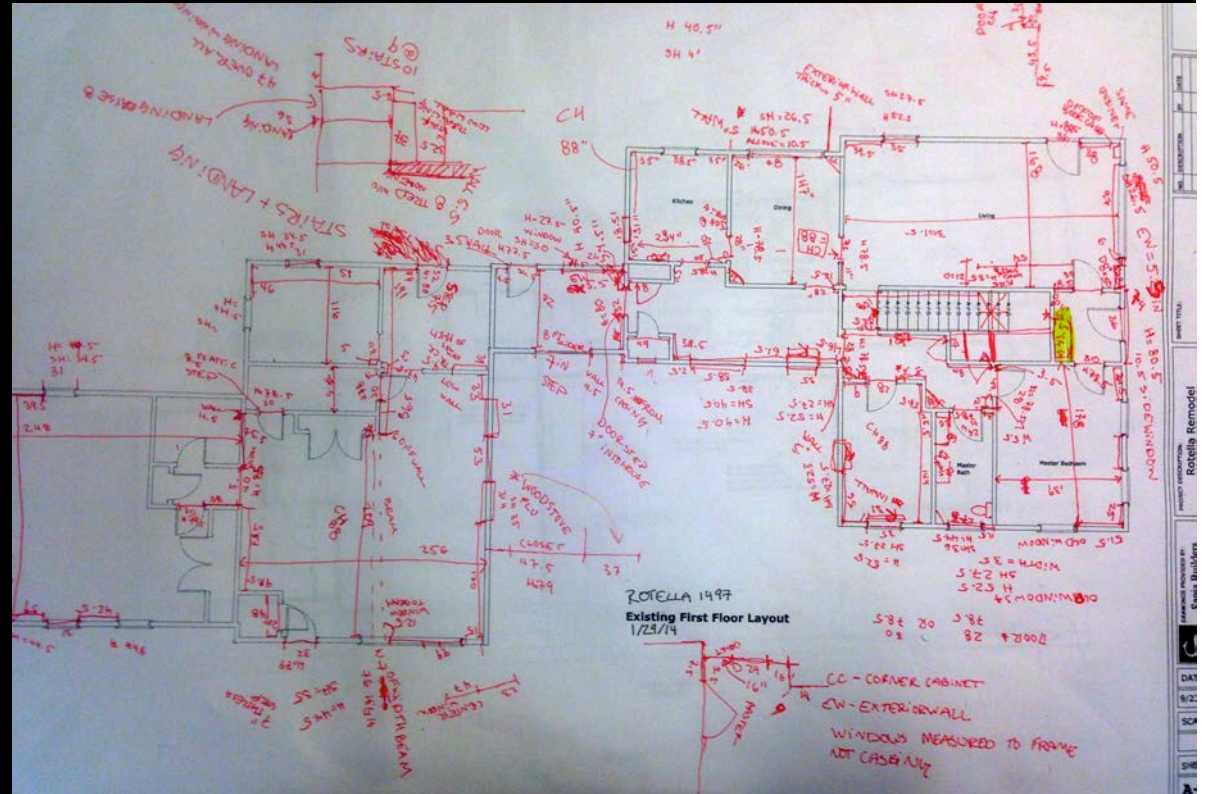
Spring 2014
Ava Foster

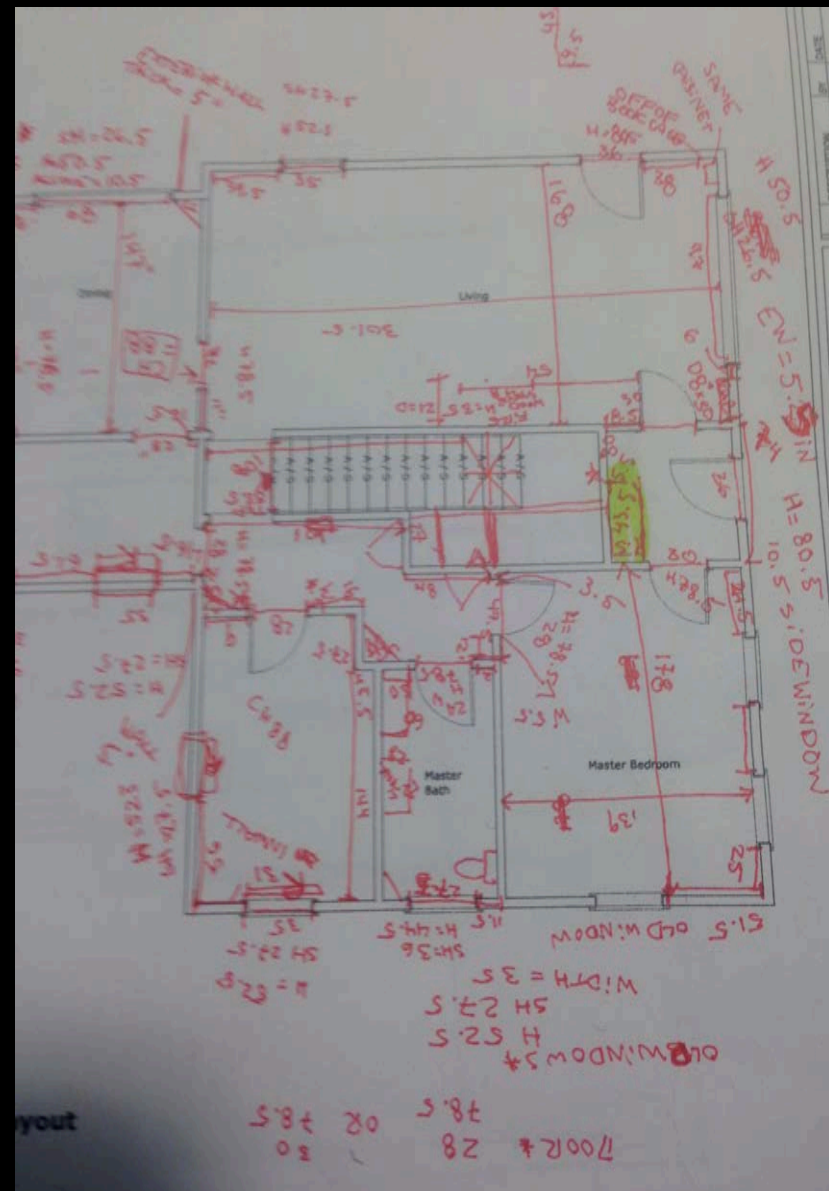
George Penniman Architecture LLC

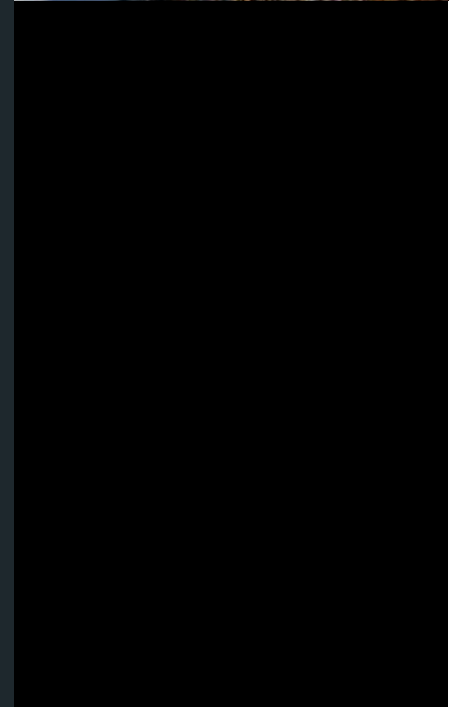
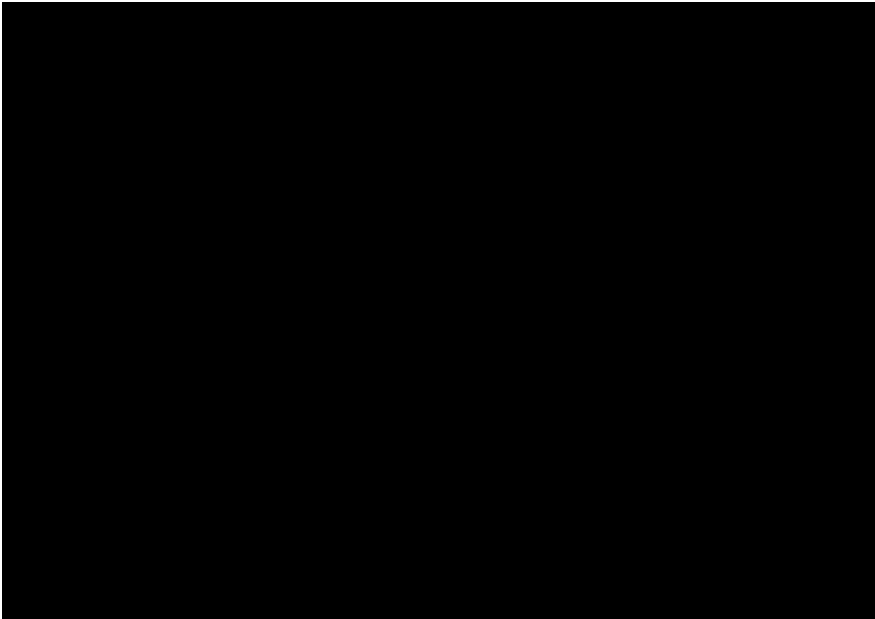


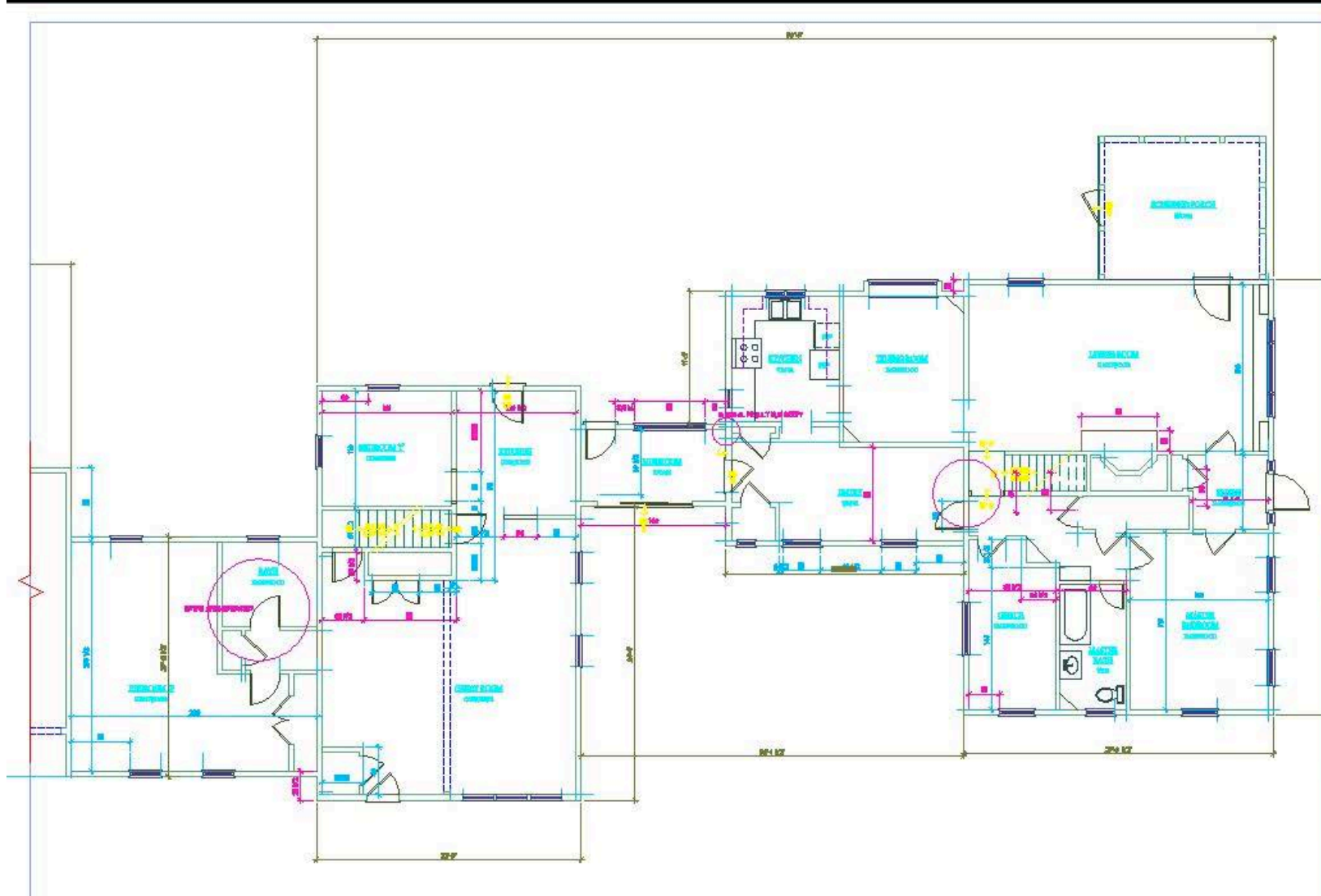
Rotella











EXISTING CONDITIONS
NOT FOR CONSTRUCTION



GEORGE PENNIMAN
ARCHITECTS LLC

35 Pratt St. phone: 860-767-2822
Essex, CT 06426 fax: 860-767-1285

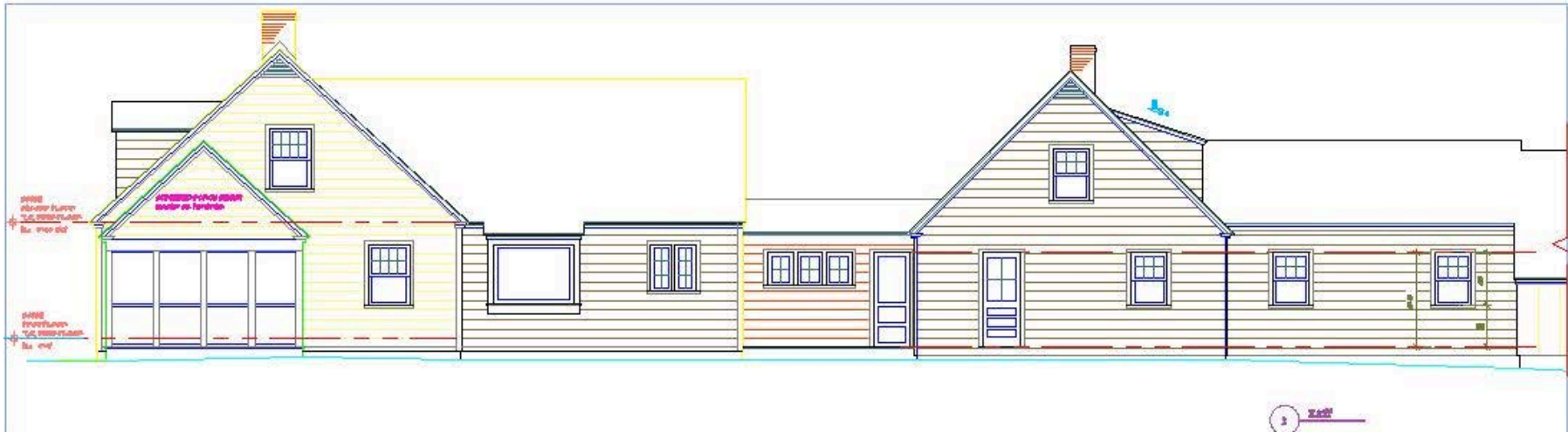
Rotella House

Essex, Connecticut

FIRST FLOOR PLAN

GEORGE PENNIMAN ARCHITECTS LLC

PROJECT # 1887 SHEET



GEORGE
ARCHI
35 Pratt St.
Essex, CT 0642

Rote

Essex,

NORT
ELE

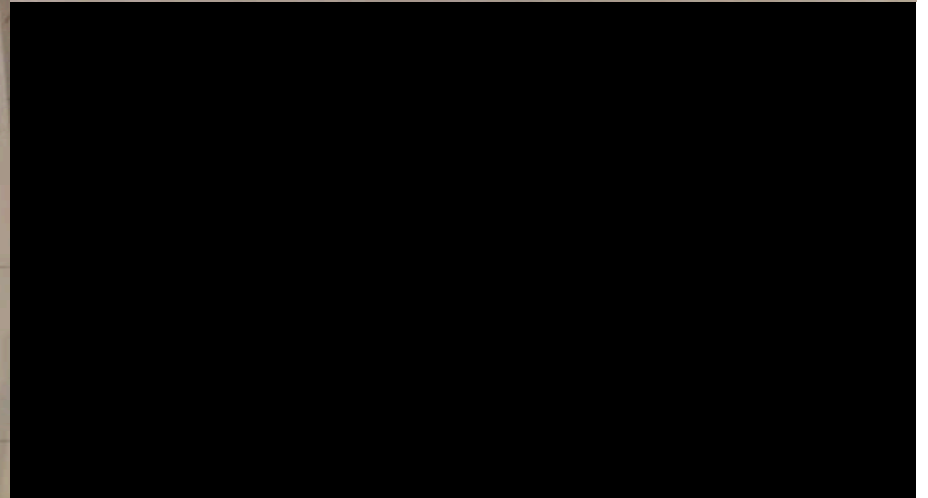
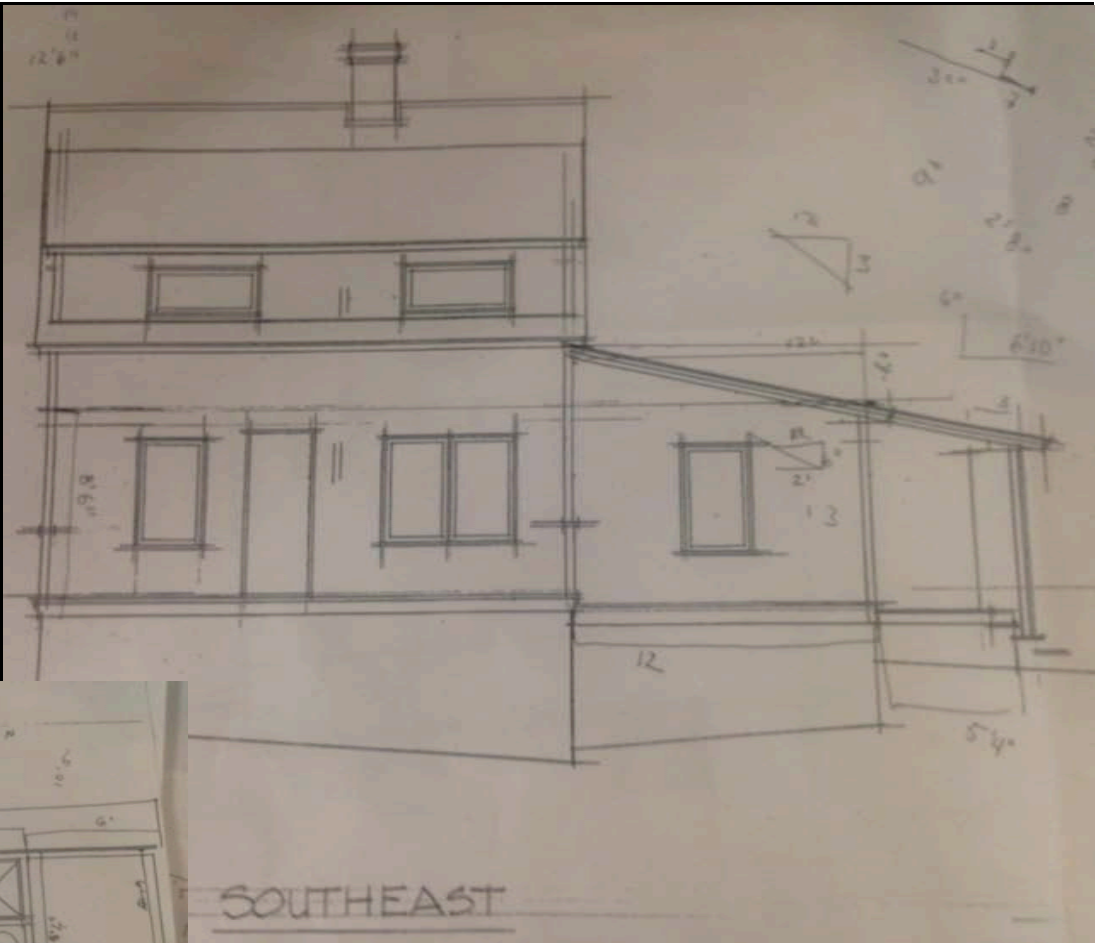
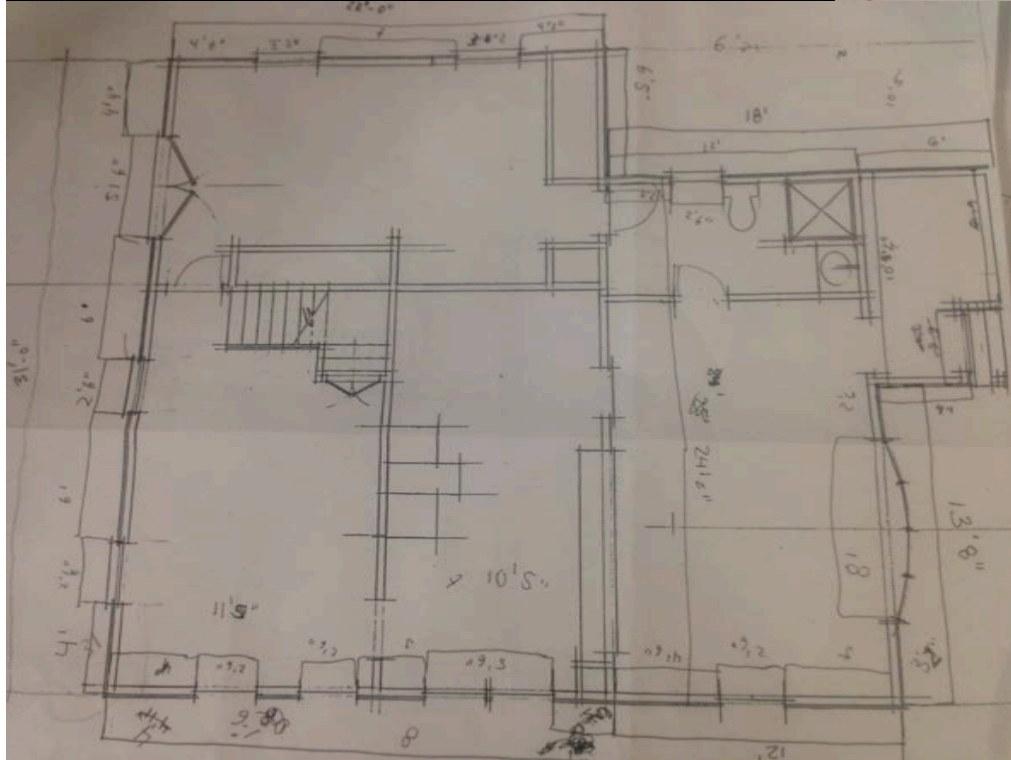
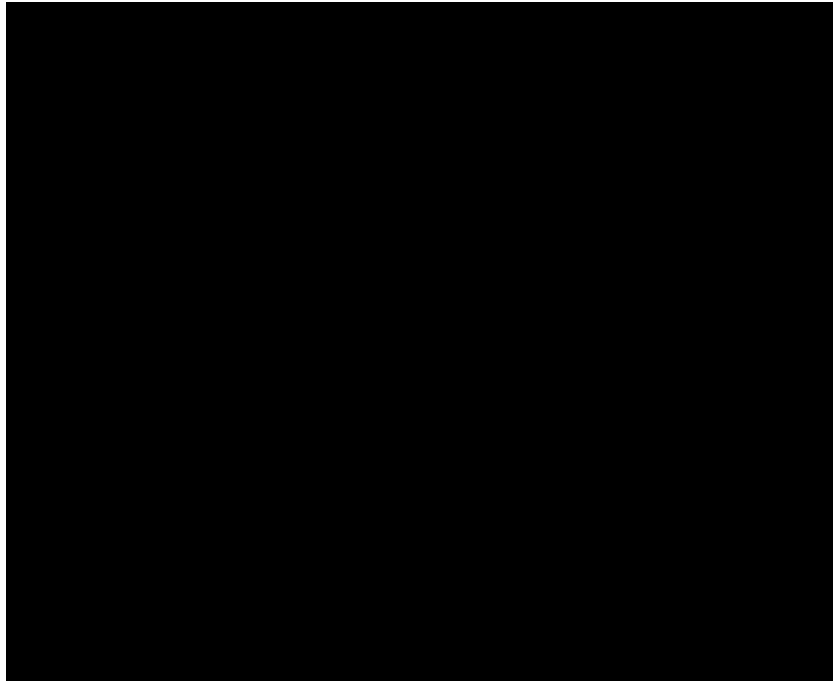
GEORGE PEN

PROJECT e.



CUTLER

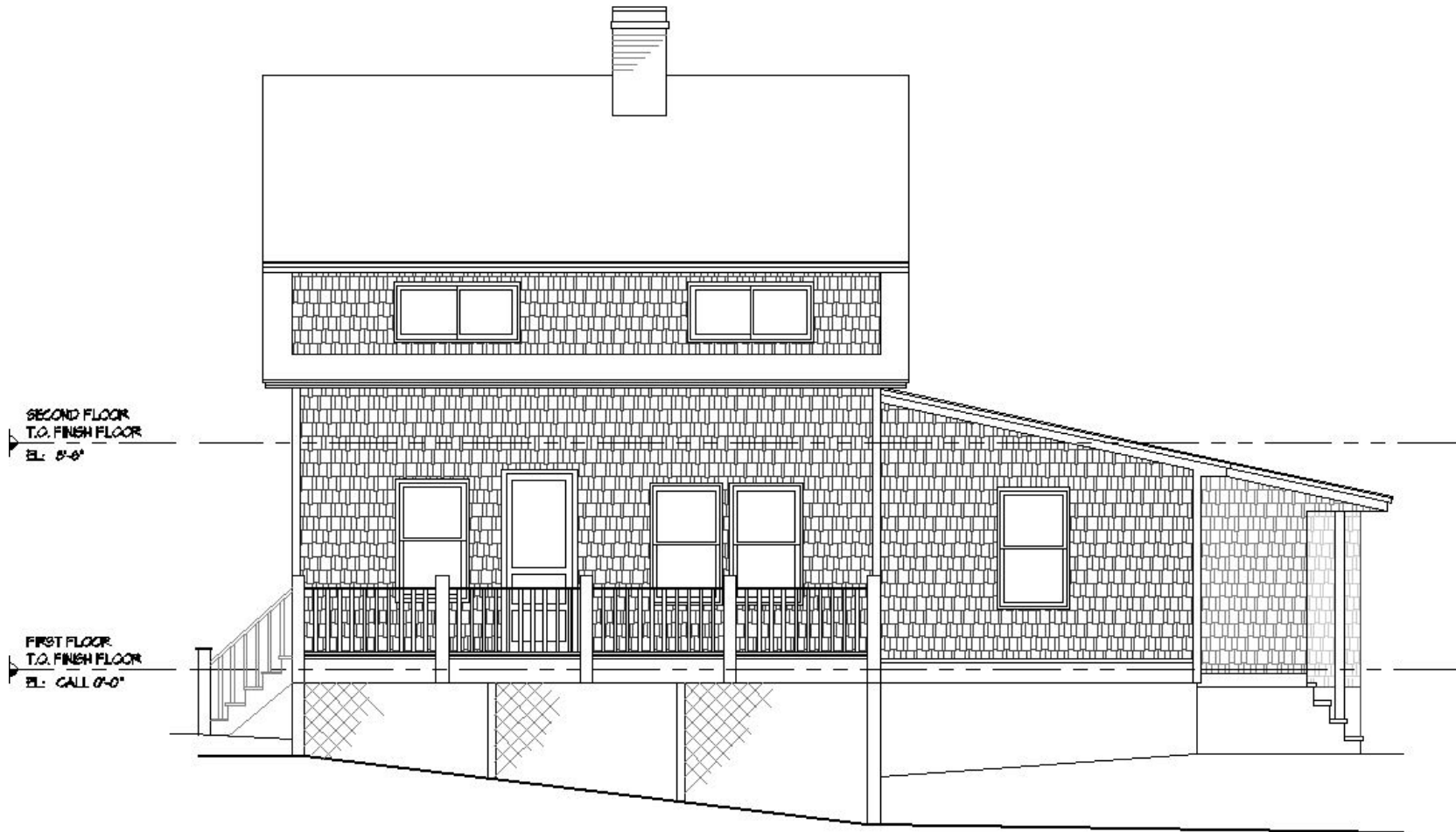












EXISTING CONDITION
NOT FOR CONSTRUCTION

GEORGE PENNIMAN
ARCHITECTS LLP

35 Pratt Street phone: 860
Essex, CT 06426 fax: 860

Cutler House

Vinalhaven, Maine

EAST ELEVATION

GEORGE PENNIMAN ARCHITECTS LLP

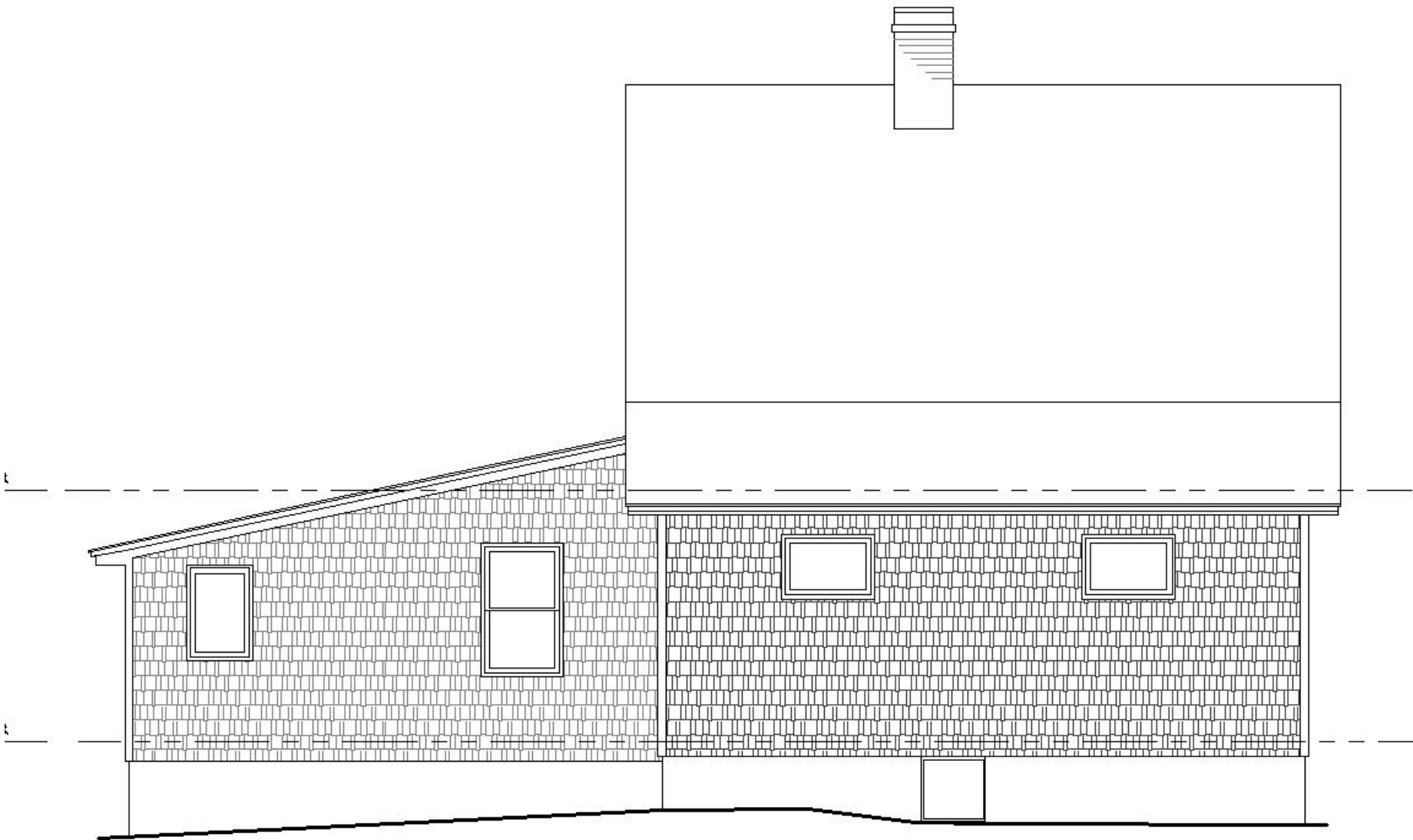
PROJECT #: 1498 SHEET:
DRAWN BY: ARF
CHECKED BY: GWP
DATE: 4/16/2014

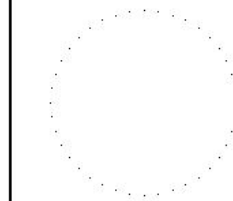
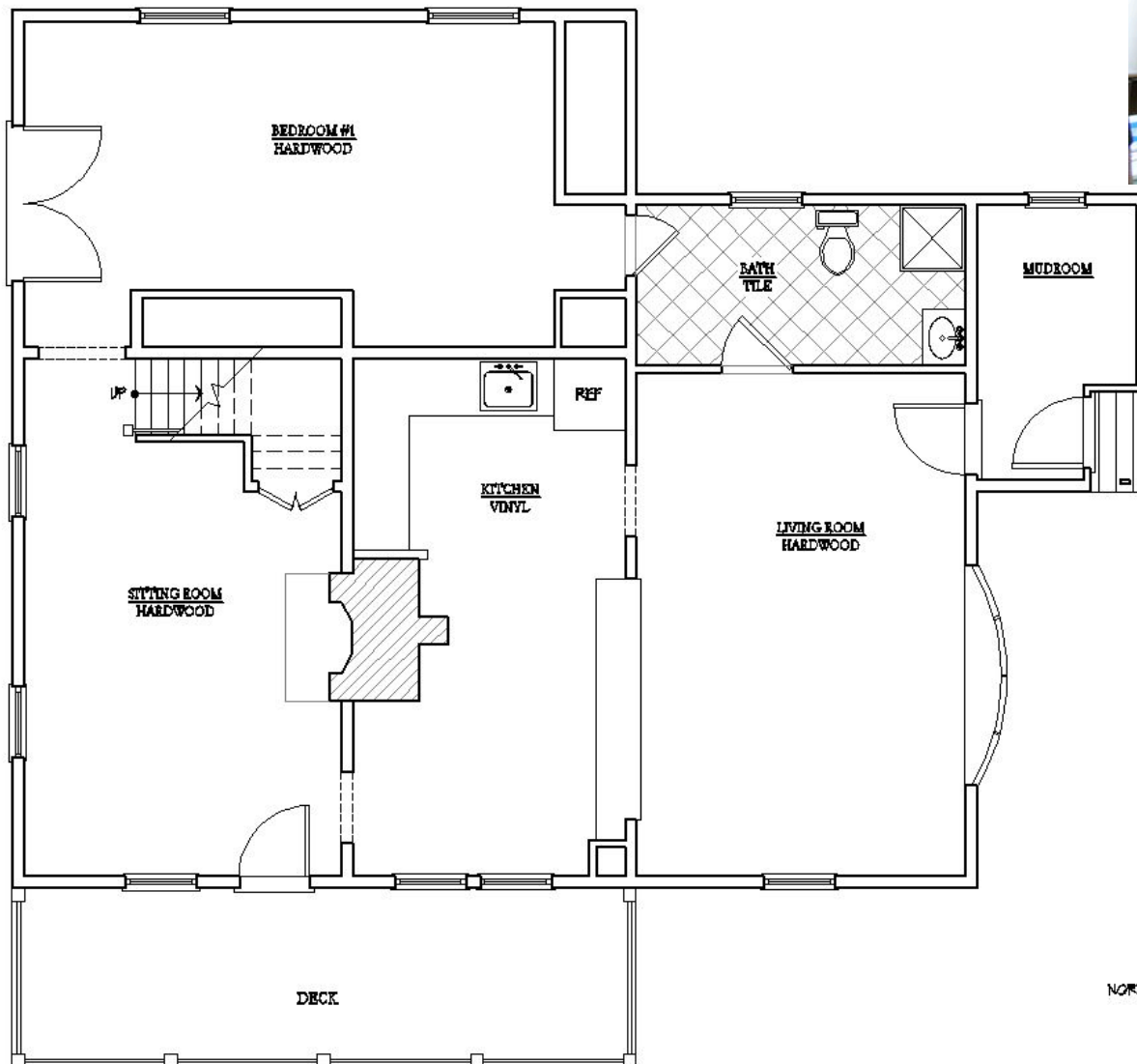
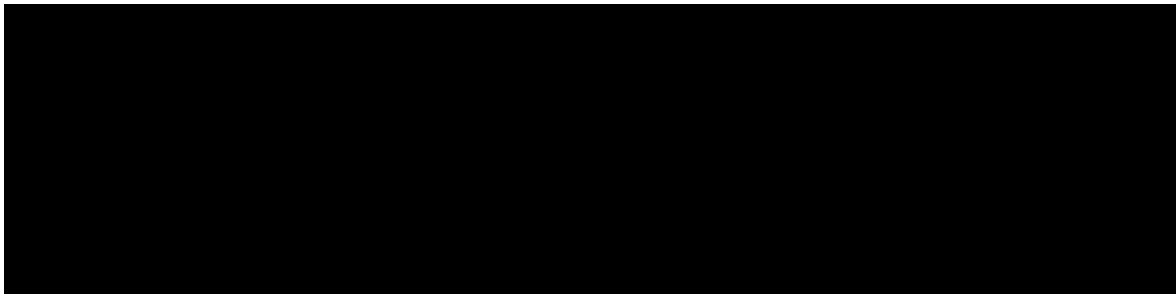
EC



SECOND FLOOR
T.O. FINISH PL.
EL: 8'-6"

FIRST FLOOR
T.O. FINISH PL.
EL: CALL OUT





GEORGE PENNIMAN
ARCHITECTS LLC

35 Pratt Street phone: 860-767-2822
Essex, CT 06426 fax: 860-767-4285

Cutler House

~

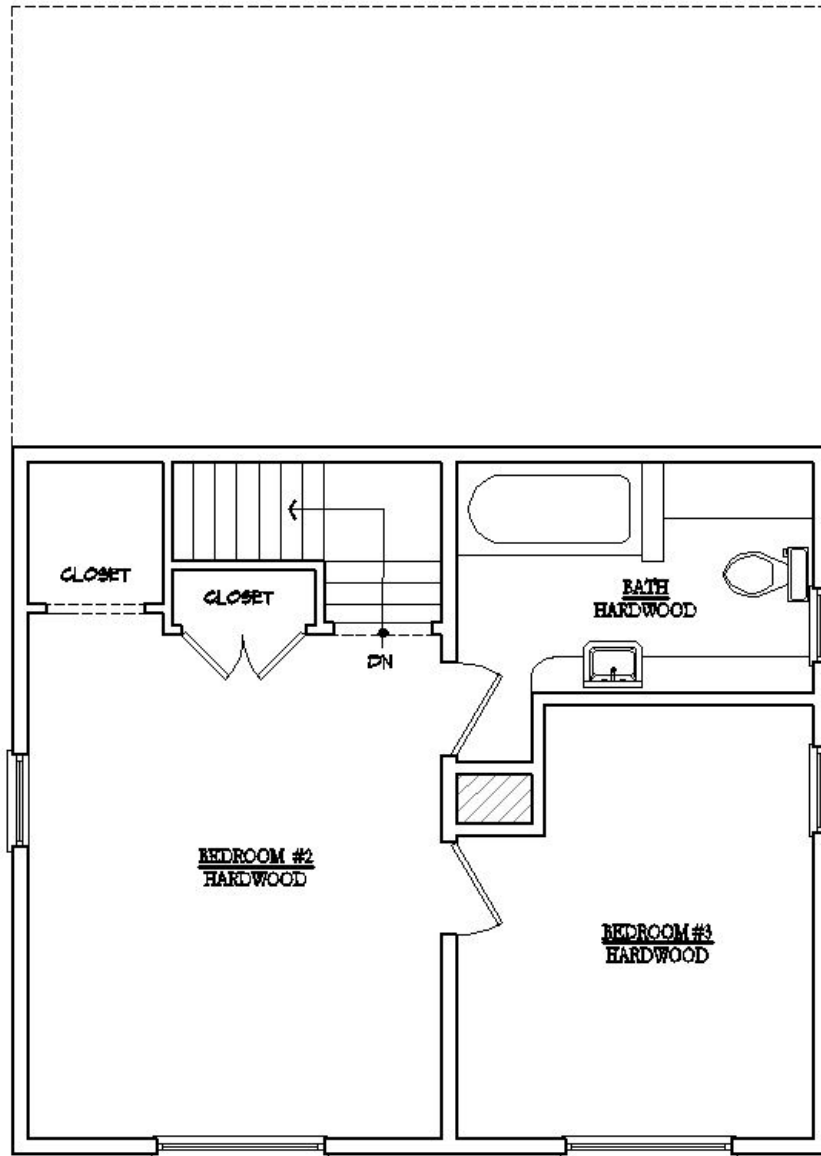
Vinalhaven Maine

FIRST FLOOR PLAN

GEORGE PENNIMAN ARCHITECTS LLC

PROJECT #: 1498 SHEET:
DRAWN BY: ARF
CHECKED BY: GWP
DATE: 4/16/2014

EC1.0



GEORGE PENNIMAN
ARCHITECTS

35 Pratt Street phone: 781-226-1111
Essex, CT 06426 fax: 781-226-1112

Cutler House

~

Vinalhaven, ME

SECOND FLOOR
PLAN

GEORGE PENNIMAN ARCH

PROJECT #: 1498 SHEET

QUESTIONS?