

2014

LI--Saltzman Architects, P.C.

Victoria Pardo

Connecticut College, victoria.pardo@conncoll.edu

Follow this and additional works at: <http://digitalcommons.conncoll.edu/archstudintproj>

Recommended Citation

Pardo, Victoria, "LI--Saltzman Architects, P.C." (2014). *Architectural Studies Integrative Projects*. Paper 61.
<http://digitalcommons.conncoll.edu/archstudintproj/61>

This Article is brought to you for free and open access by the Art History and Architectural Studies at Digital Commons @ Connecticut College. It has been accepted for inclusion in Architectural Studies Integrative Projects by an authorized administrator of Digital Commons @ Connecticut College.

For more information, please contact bpancier@conncoll.edu.

The views expressed in this paper are solely those of the author.

VICTORIA PARDO

SENIOR INTEGRATIVE PROJECT:
INTERNSHIP

ARCHITECTURAL STUDIES
CONNECTICUT COLLEGE
2014



CONNECTICUT
COLLEGE

A wide-angle photograph of the interior of the Brown Memorial Baptist Church in New York. The church features a high, vaulted ceiling with intricate ribbing and several large, ornate chandeliers. The pews are arranged in a traditional layout, with red carpeting on the floor and red cushions on the seats. A large, arched stained-glass window is visible on the left side, and a balcony with a red carpeted railing runs along the back of the sanctuary. The overall atmosphere is one of grandeur and historical significance.

LI-Saltzman Architects, P.C.

50 Broadway, New York, NY

Mission

To create designs through the result of thorough research and thoughtful problem-solving that focus on restoring and enriching the built environment.

Victoria Pardo Summer Internship 2013

Brown Memorial Baptist Church New York,



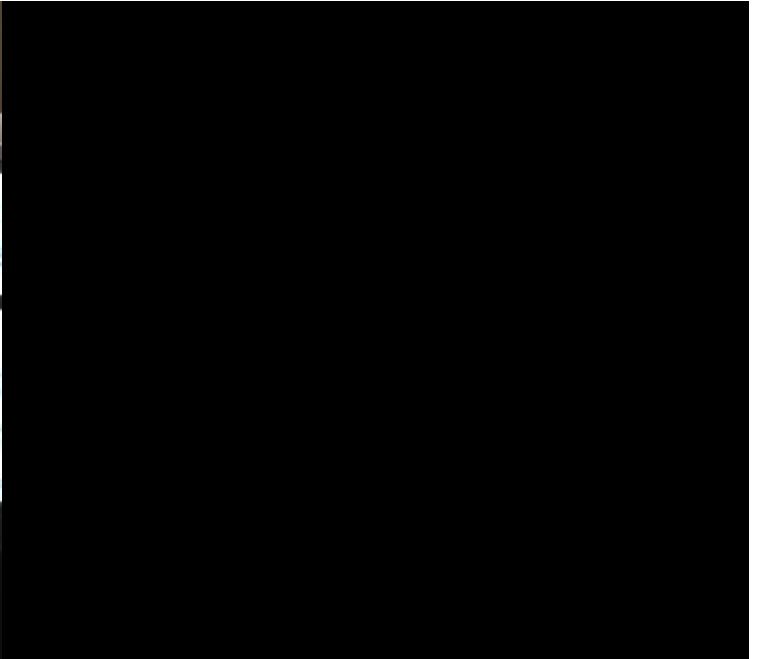
Brick House, New Canaan, CT



High Bridge, NY, NY



Lower East Side Tenement Museum



My Desk





*Andrew Freedman Home, 1125 Grand Concourse, Bronx, New York, NY
Circa 1924 Before Addition of Wings. The Museum of the City of New York*

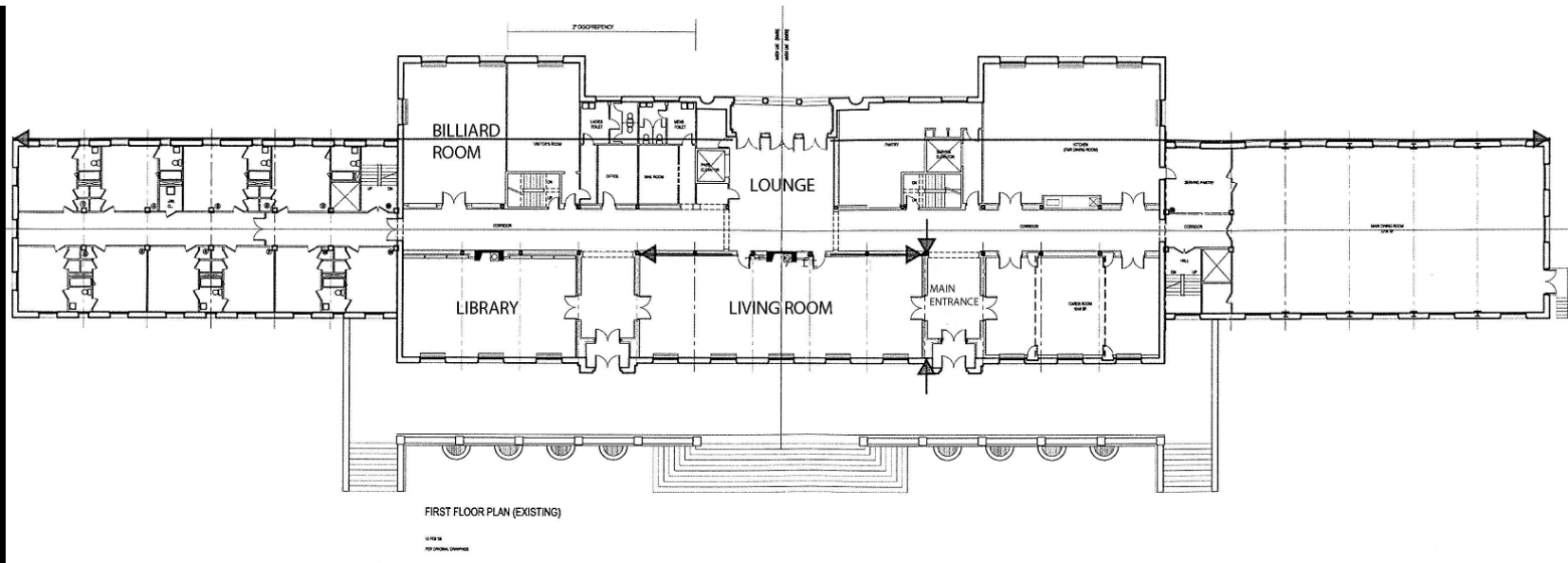


FIGURE 36. *First Floor Plan*

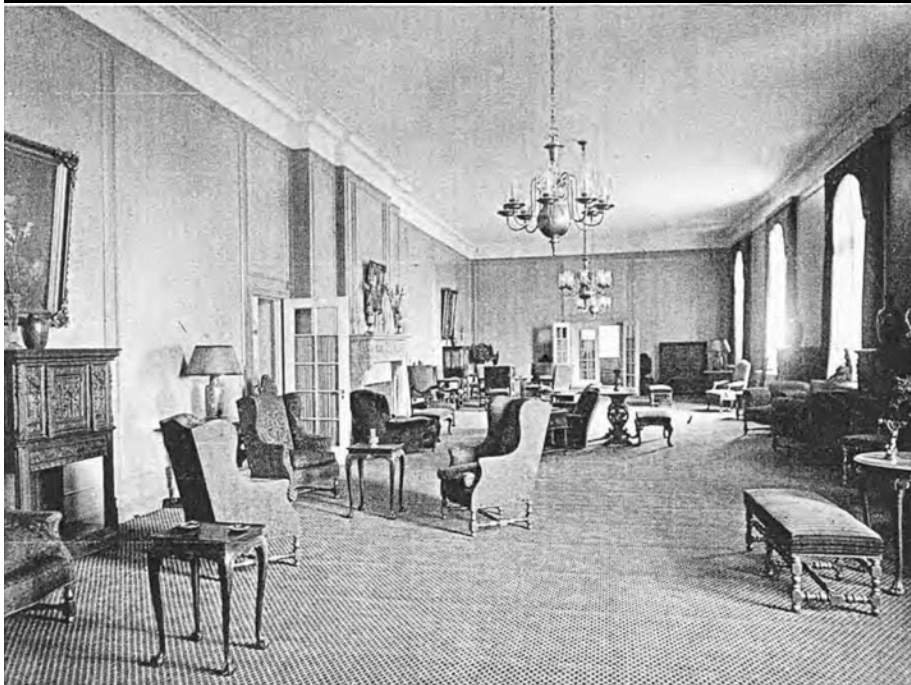


FIGURE 39. *First Floor Original Living Room ca. 1924*
Architecture and Building Article



FIGURE 39. *First Floor Original Living Room*



Walton Street Original Building Spalling Stone due to Corrosion of Embedded Metal



FIGURE 20. Grand Concourse Façade South Wing Deterioration of Masonry Surround at Corroding Steel Lintel



FIGURE 16. Grand Concourse Façade Original Building Water Damage, Delamination and Spalling



Failing Stucco on Parapet Wall with Damaged Brick Behind



FIGURE 6. *View of Grand Concourse and E. 166 Street Across the Street from the Andrew Freedman Home* (Important to get context photos to understand what type of architecture is around the building)

Storefront Power Point-Example



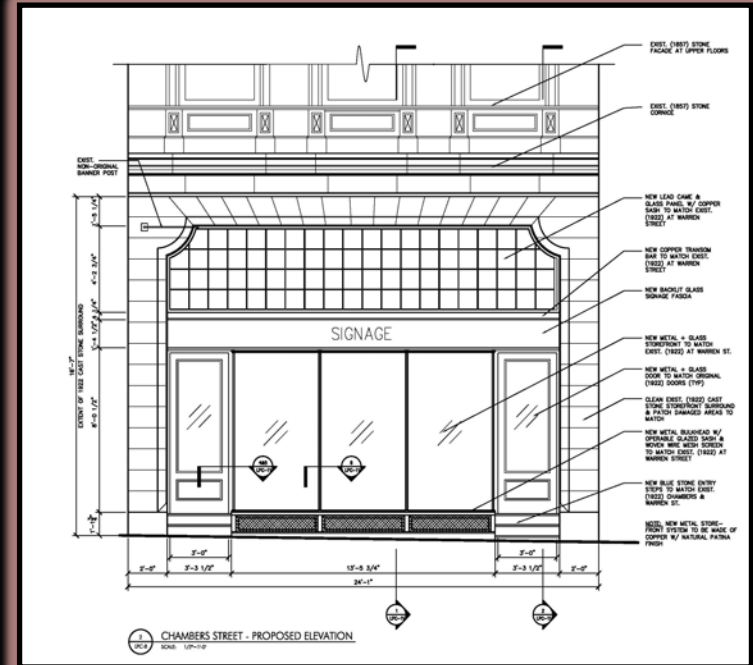
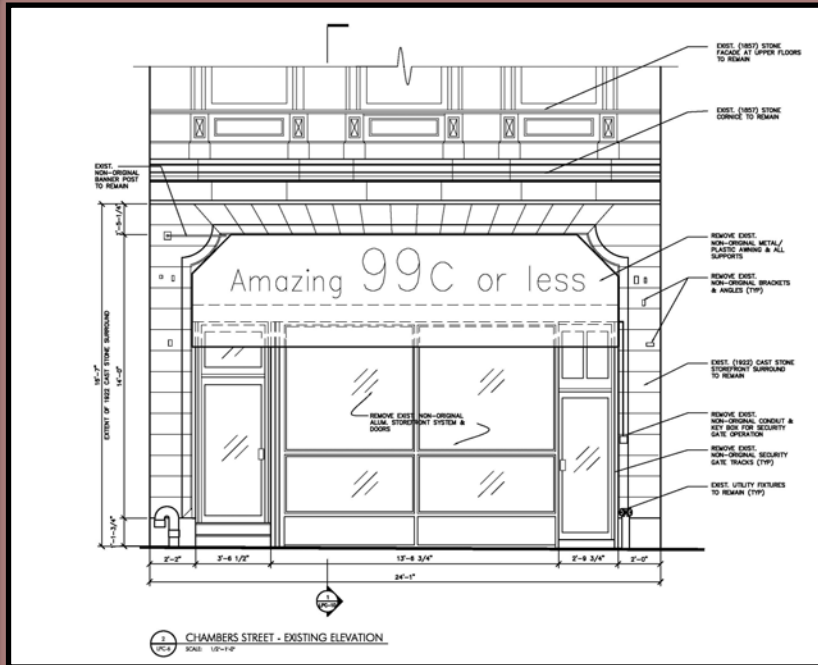
- On the left, Vesuvio Bakery's (160 Prince Street, New York, NY) signs are simple, and the architectural details of the original façade are accentuated
- On the right, the signage and security grills overwhelm the façade and also cover up the historical details of the building in some areas



The Scholastic Building, Soho, New York, NY



54 Pearl Street, New York, NY



Before



After

Storefront Power Point-Example



City of New York Tax Photo



138 Prince and West Broadway, New York, NY

I had the opportunity to go through LSA's old projects to use as examples in my Power Point. LSA restored this store in Soho:

- Recreated original slate mansard roof, pedimented copper dormers
- Overall spirit of historic ground floor is legible



Made from the Lumiere Signa Plate. The C. P. Goetz American Optical Co.'s Lenses were used exclusively.
BROADWAY (1205 TO 1229).—SARNOFF, HATS—YUKI, JEWELRY—UNITED CIGAR STORES CO.—MARCUS & MARCUS, MEN'S FURNISHINGS—VIRRA CO, REGAL SHOES—WERNER'S THEATRE—CROSBY, JEWELRY—DAILY'S THEATRE—HATCH, CANDY—WORTH, SHOES—JAMES HUTCHINSON, HABERDASHER.

1205 to 1229 Broadway (De Leeuw)



[PLATE 113]
Fifth Avenue and Broadway at
23rd Street, 1884

Turning back in time to 1884, the site of the Flatiron Building is like a giant billboard. The photo was taken from a point just west of Madison Square Park where Broadway crosses Fifth Avenue at 23rd Street. The building with the painted side is the Cumberland Hotel. The "Finest Turkish Russian Heated Baths" in the city are advertised on the huge sail of a banner atop the Erie Railroad office, the one steady occupant in this row of low office buildings.

(Lightfoot)



(Black)

Site Visits



Dollar Saving Bank, 1919, Bronx, New York, NY
(LSA was hired to determine the feasibility of turning this space into a department store)



- Apart from my two Assignments, I had the opportunity to join the team on site visits to various projects around the city as well as go off on my own and wander different neighborhoods. I read a lot of Designation Reports written by the LPC on the buildings we visited. One day, I even went to the Landmarks Preservation Commission myself to pick something up for Judith.



Secretary of the Interior's Standards for the Treatment of Historic Properties

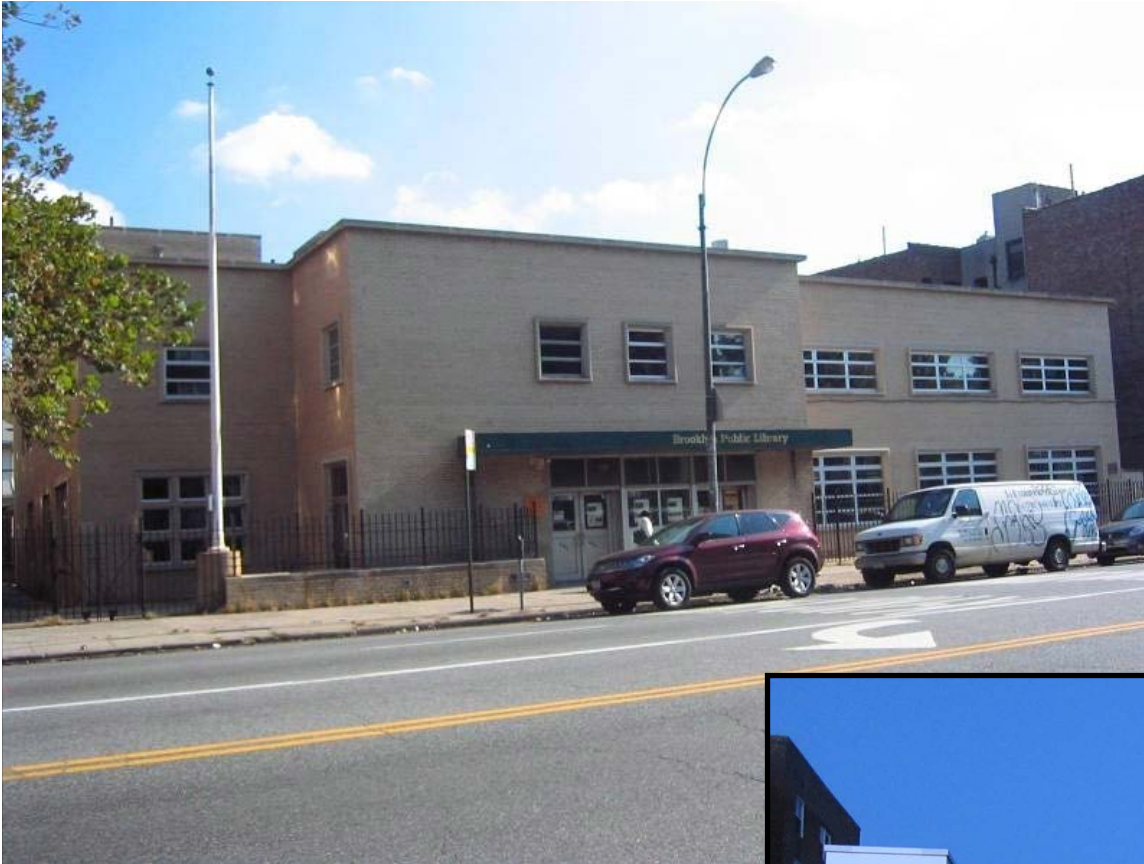


Göteborg Law Courts, Göteborg, Sweden



Science Center in New London Hall, Connecticut College
270 Mohegan Avenue, New London, CT

•Clearly distinguished addition from original historic fabric, yet there are many common architectural elements like massing, coloration and fenestration



The Brooklyn Public Library-King's Highway Branch: 2115 Ocean Ave, Brooklyn, NY

- Contemporary glass and aluminum curtain wall clearly distinguishing the addition from the original structure, but maintaining the overall architectural style.





Contact information: Li-Saltzman Architects
50 Broadway, 33rd Floor
New York, NY
10004

References

- Black, Mary. *Old New York in Early Photographs*. Ontario: General, 1973. Print.
- De Leeuw, R.M. *Both Sides of Broadway, from Bowling Green to Central Park, New York City*. New York City: De Leeuw Riehl Pub., 1910. Print.
- Fulton Nassau Design Guidelines
- Lightfoot, Frederick S., ed. *Nineteenth-Century New York in Rare Photographs*. Toronto: General, 1981. Print.
- Stern, Robert A. M., Gregory Gilmartin, and Thomas Mellins. *New York 1930: Architecture and Urbanism between the Two World Wars*. New York: Rizzoli, 1987. Print.
- <http://www.nps.gov/tps/how-to-preserve/briefs/14-exterior-additions.htm>
- <http://www.dailymail.co.uk/news/article-2257733/New-York-Photographer-catalogs-glowing-neon-signs-illuminating-store-fronts-city.html>
- <http://www.harri.com>
- <http://www.trendir.com/house-design/old-farmhouse-with-addition-a-modern-twist.html>
- <http://observer.com/2010/01/popup-no-more-chinese-clothier-jnby-goes-permanent-at-75-greene/>
- <http://www.architecture-balar.com/2011/09/house-of-month-redesign-of-historic.html>