

1916

My Melancholy Baby: Fox-trot Ballad with Ukulele Arrangement

Ernie Burnett

George A. Norton

Follow this and additional works at: <https://digitalcommons.conncoll.edu/sheetmusic>

Recommended Citation

Burnett, Ernie and Norton, George A., "My Melancholy Baby: Fox-trot Ballad with Ukulele Arrangement" (1916). *Historic Sheet Music Collection*. 476.

<https://digitalcommons.conncoll.edu/sheetmusic/476>

This Score is brought to you for free and open access by the Greer Music Library at Digital Commons @ Connecticut College. It has been accepted for inclusion in Historic Sheet Music Collection by an authorized administrator of Digital Commons @ Connecticut College. For more information, please contact bpancier@conncoll.edu.

The views expressed in this paper are solely those of the author.

My Melancholy Baby

FOX-TROT BALLAD

With
Ukulele Arrangement



Words by
GEO. A. NORTON
Music by
ERNIE BURNETT



MARION WERTH

JOE MORRIS MUSIC CO.
1587 BROADWAY NEW YORK

MADE IN U.S.A.

Try This On Your Piano

I'm Making Believe That I Don't Care.

Tune Ukulele

G C E A

Lyric by
AL DUBIN &
WILLIE RASKIN

Uke arr. by Bob Neilson.

Music by
ALEX MARR

Chorus
a tempo

I'm mak - ing be - lieve that I don't care, Tho

ev - 'ry one knows that I do, I'm try - ing to

smile when all the while, My poor heart is cry - ing for

Copyright 1927 by Joe Morris Music Co. 1587 B'way, N.Y.

The Publishers Reserve the right to the use of this Music or Melody for Mechanical Instruments.
International Copyright Secured.

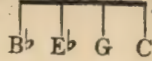
Albert & Sons, Australian Agents, Sydney.

For Sale By All Dealers

My Melancholy Baby.

Words by
GEO. A. NORTON

Tune Uke



Music by
ERNIE BURNETT

Moderato

Uke arr. by Bob Neilson

Come sweetheart mine, Don't sit and pine, Tell me of the cares that make you
Birds in the trees, Whis-per-ing breeze, Should not fail to lul you in to

feel so blue. What have I done? An-swer me Hon',
peace-ful dreams. So tell me why Sad-ly you sigh,

Have I ev-er said an un-kind word to you? My love is true,
Sit-ting at the win-dow where the pale moon beams, You shouldn't grieve,

Copyright MCMXI by Ernest M. Burnett.
 Copyright transferred MCMXII to Theron C. Bennett.
 Copyright transferred MCMXVI to Joe Morris Music Co. 1547 B'way, N.Y.
 International Copyright Secured.

And just for you,
Try and be - lieve,

I'd do al-most an - y - thing at
Life is al-ways sun-shine when the

an - y time,
heart beats true;

Dear, when you sigh
Be of good cheer,

Or when you cry,
Smile thro' your tears,

Something seems to grip this ve-ry heart of mine.
When you're sad it makes me feel the same as you.

Chorus

Come to me, my mel-an-chol-y ba - by,
Cud-dle up and don't be

p-f

blue;
All your fears are fool-ish fan-cy, may be,

You know, dear, that I'm in love with you. Ev'ry cloud must have a sil-ver

lin - ing, Wait un - til the sun shines through,

Smile my hon - ey dear, while I kiss a - way each tear, Or

else I shall be mel-an-chol - y too. Now won't you too.

Try This On Your Piano

DREAM RIVER

Uke arr. by
Anthony J. Franchini

B \flat Tuning
F B \flat D G

By
GEORGE BROWN

Chorus

Drift-ing with you a - long Dream Riv - er,

p-f

Out where the moon beams soft - ly play As we count the

stars to - geth - er, All of my cares will fade a -

way Drift-ing with you a - long Dream Riv - er,

Copyright 1928 by Joe Morris Music Co. 1547 B'way, N.Y.
The Publishers Reserve the right to the use of this Music or Melody for Mechanical Instruments.
International Copyright Secured. All Rights Reserved. Albert & Sons, Australian Agents, Sydney.

For Sale By All Dealers