

Connecticut College

## Digital Commons @ Connecticut College

---

Historic Sheet Music Collection

Greer Music Library

---

1925

### Remember

Irving Berlin

Follow this and additional works at: <https://digitalcommons.conncoll.edu/sheetmusic>

---

#### Recommended Citation

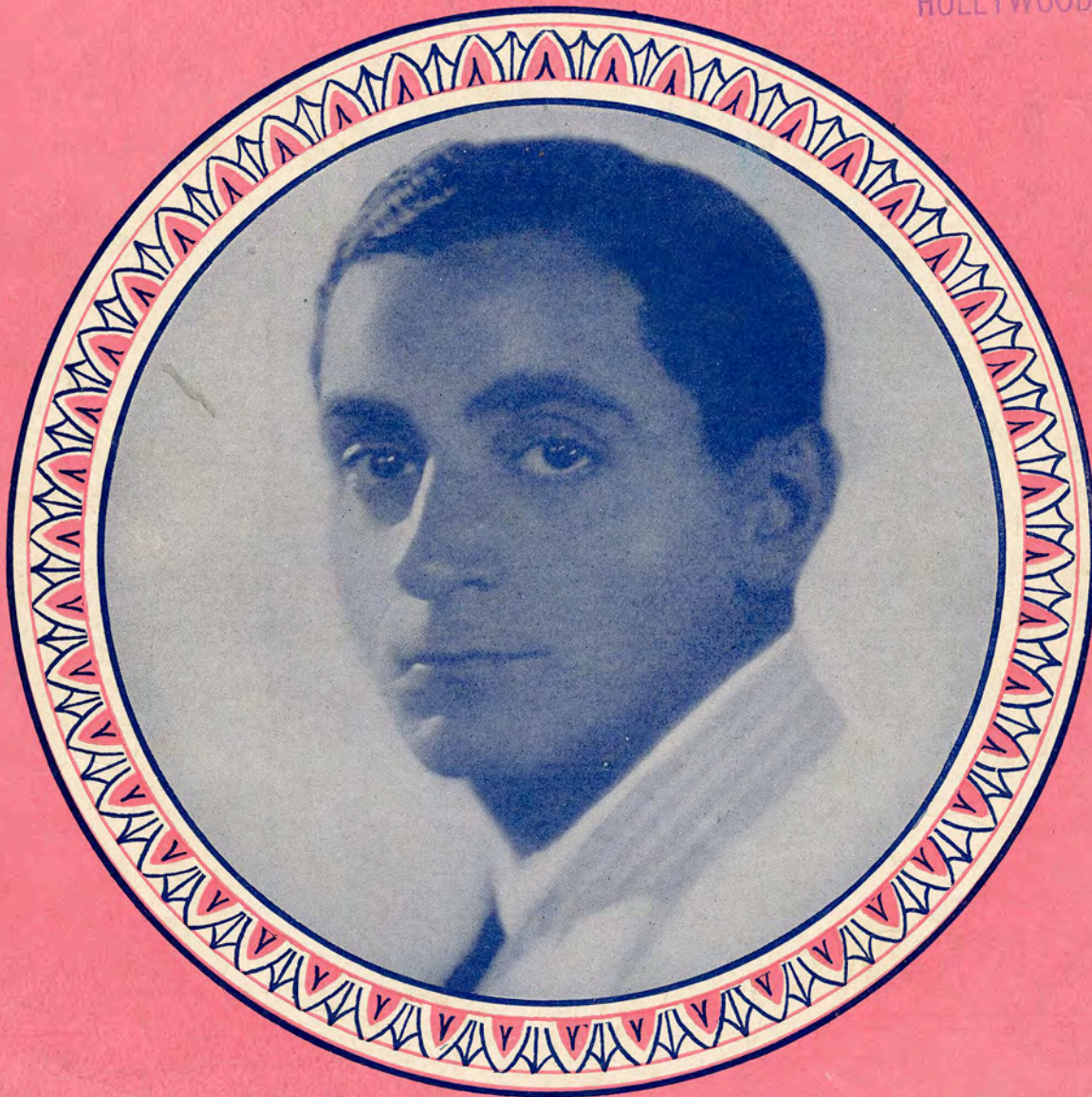
Berlin, Irving, "Remember" (1925). *Historic Sheet Music Collection*. 1806.  
<https://digitalcommons.conncoll.edu/sheetmusic/1806>

This Score is brought to you for free and open access by the Greer Music Library at Digital Commons @ Connecticut College. It has been accepted for inclusion in Historic Sheet Music Collection by an authorized administrator of Digital Commons @ Connecticut College. For more information, please contact [bpancier@conncoll.edu](mailto:bpancier@conncoll.edu).

The views expressed in this paper are solely those of the author.

# IRVING BERLIN'S REMEMBER

GRANADA MUSIC SHOPPE  
7551 SUNSET BLVD.  
HOLLYWOOD, CAL.



Irving Berlin, Inc.  
MUSIC PUBLISHERS  
1607 Broadway New York

MADE IN  
USA

Leff

# REMEMBER

Tune Ukulele  
G C E A

By IRVING BERLIN

Valse moderato

The piano introduction is in 3/4 time with a key signature of one flat (Bb). It begins with a treble clef staff containing a whole rest, followed by a bass clef staff. The music starts with a forte (*f*) dynamic. The right hand plays chords in the treble clef, while the left hand plays a simple bass line. The piece concludes with a fermata over the final chord.

The vamp section is in 3/4 time with a key signature of one flat (Bb). It begins with a treble clef staff containing a whole rest, followed by a bass clef staff. The music starts with a piano (*p*) dynamic. The right hand plays chords in the treble clef, while the left hand plays a simple bass line. The piece concludes with a fermata over the final chord.

VOICE

The vocal line and piano accompaniment for the first part of the song. The vocal line is in a treble clef with a key signature of one flat (Bb). The piano accompaniment is in a grand staff with a key signature of one flat (Bb). The lyrics are: "One lit - tle kiss, a mo - ment of bliss, Then  
In - to my dreams, you wan - dered it seems, And

The vocal line and piano accompaniment for the second part of the song. The vocal line is in a treble clef with a key signature of one flat (Bb). The piano accompaniment is in a grand staff with a key signature of one flat (Bb). The lyrics are: "hours then of there deep came re - gret  
day;

Ukulele arr. by  
MAY SINGHI BREEN

Copyright 1925 by IRVING BERLIN, Inc., 1607 B'way, N.Y.

All Rights Reserved MADE IN U.S.A. International Copyright Secured

One lit - tle smile, and aft - er a while, A  
 You loved me too, my dreams had come true, And

long - ing to for - get.  
 all the world was May;

One lit - tle heart - ache, left as a to - ken,  
 But soon the May time, turned to De - cem - ber,

One lit - tle play - thing, care - less - ly bro - ken:  
 You had for - got - ten, do you re - mem - ber.

*rall.*

CHORUS

Re - mem - ber the night, — the night — you said — “I

love you” — Re - mem - ber? — Re -

mem - ber you vowed — by all — the stars — a -

bove you — Re - mem - ber? — Re - mem - ber we

found a lone - ly spot And aft - er I

learned to care a lot; You prom - ised that

you'd for - get me not But you for -

got to re - mem - ber Re - mem - ber.

STANDARDS OF THE WORLD

"STERLING" ON SILVER  
"IRVING BERLIN" ON SONGS

# THE UP-TO-THE-MINUTE SONG HIT

## I "WANNA" GO WHERE YOU GO — DO WHAT YOU DO THEN I'LL BE HAPPY

Words by  
SIDNEY CLARE  
& LEW BROWN

Music by  
CLIFF FRIEND

### CHORUS

I "wan - na" go where you go do what you do

love when you love then I'll be hap - py I "wan - na" sigh when you sigh

Cry when you cry smile when you smile then I'll be hap - py If you go

Copyright MCMXXV by IRVING BERLIN Inc., 1607 Bway, N. Y.  
International Copyright Secured MADE IN U.S.A. All Rights Reserved

COPIES ON SALE WHEREVER MUSIC IS SOLD  
This Number can also be had for your Phonograph and Player Piano