

Connecticut College

Digital Commons @ Connecticut College

Historic Sheet Music Collection

Greer Music Library

1925

Tell Her In The Springtime

Irving Berlin

Follow this and additional works at: <https://digitalcommons.conncoll.edu/sheetmusic>

Recommended Citation

Berlin, Irving, "Tell Her In The Springtime" (1925). *Historic Sheet Music Collection*. 1819.
<https://digitalcommons.conncoll.edu/sheetmusic/1819>

This Score is brought to you for free and open access by the Greer Music Library at Digital Commons @ Connecticut College. It has been accepted for inclusion in Historic Sheet Music Collection by an authorized administrator of Digital Commons @ Connecticut College. For more information, please contact bpancier@conncoll.edu.

The views expressed in this paper are solely those of the author.

TELL HER IN THE SPRINGTIME

SAM H. HARRIS *presents*
IRVING BERLIN'S FOURTH ANNUAL
MUSIC BOX REVUE
1925

Words & Music
by
IRVING BERLIN



Tell Her in the Springtime
Listening
In the Shade of a Sheltering
Tree
Where Is My Little Old
New York?
Don't Send Me Back to
Petrograd
Unlucky in Love
The Call of the South
Rockabye Baby
Who
Tokio Blues

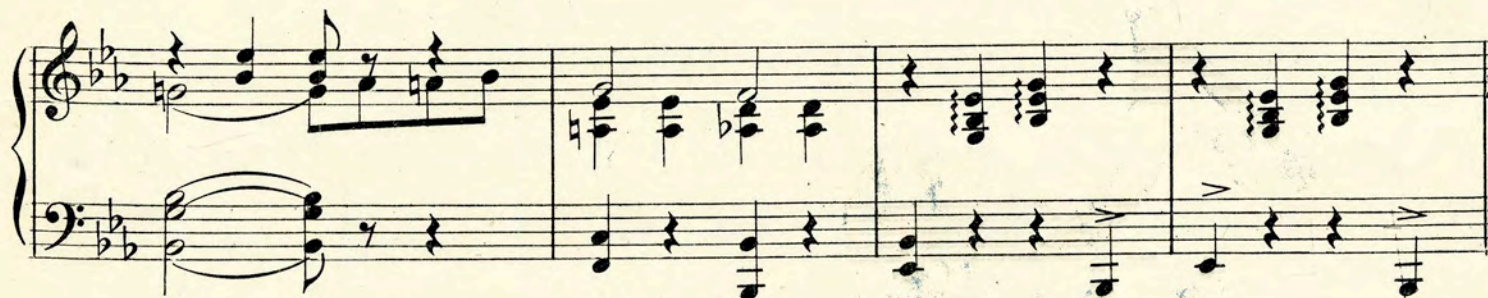
Staged by
JOHN MURRAY ANDERSON

Irving Berlin, Inc.
MUSIC PUBLISHERS
1607 Broadway New York

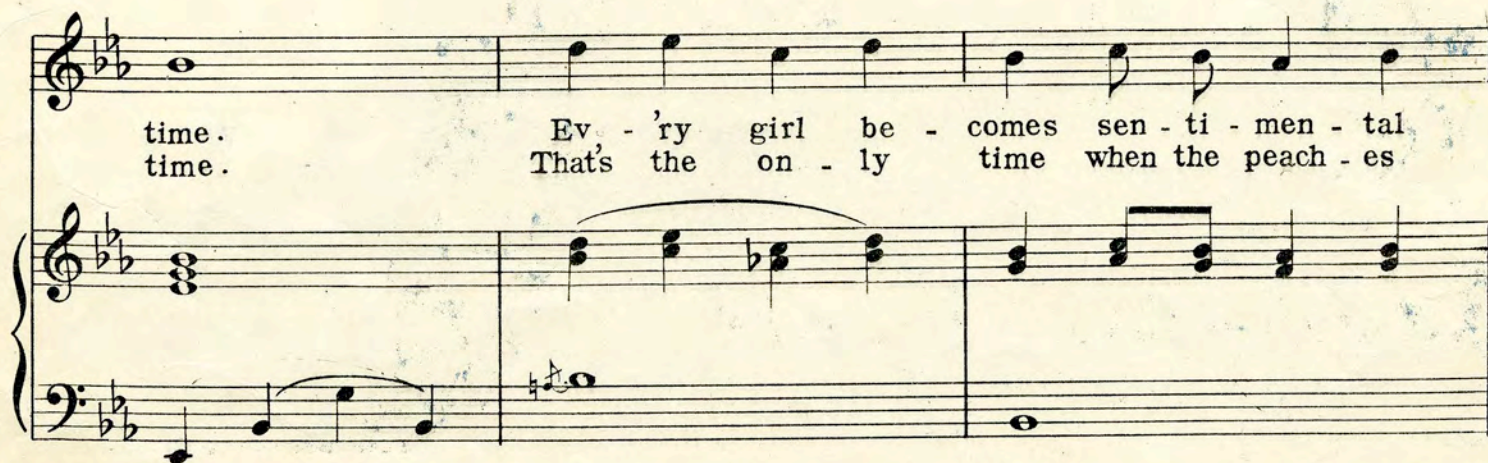
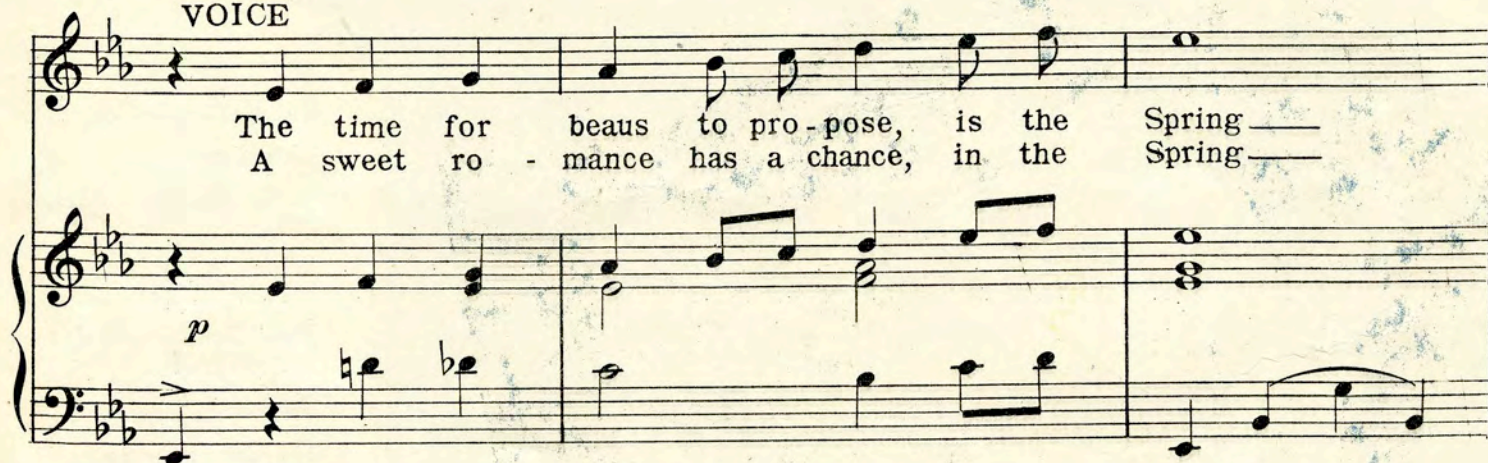
Tell Her In The Springtime

by IRVING BERLIN

Moderato



VOICE



then _____ A girl will
fall _____ Be - cause we

part with her heart in the Spring - time, To the love-sick
find love is blind in the Spring - time, And your tale of

boy who pro - pos - es, With the bloom of the ros - es.
love ov - er - pow - ers, If you say it with flow - ers.

CHORUS

Tell _____ her in the Spring - time, in May or in

Melody marcato

June. Tell _____ her in the Spring - time, the best time to

spoon, When ev - 'ry-thing be-gins

blos - som - ing, you'll hear Men - del-sohn's Spring Song tune _____

When _____ the moon is shin - ing you speak of her

charms Then — is when she's pin - ing to rest in your

arms Don't wor-ry so she won't

an - swer "No" If you play Ro - me - o in the

Spring. Spring.



SONG GEMS

FROM

IRVING BERLIN'S

FOURTH ANNUAL 1925

MUSIC BOX REVUE

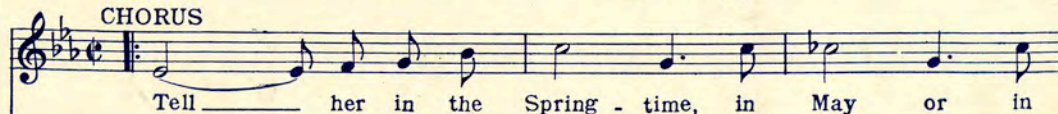
In The Shade Of A Sheltering Tree

REFRAIN



Tell Her In The Springtime

CHORUS



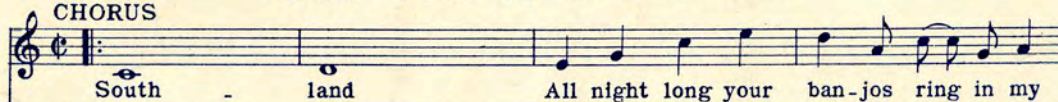
LISTENING

CHORUS



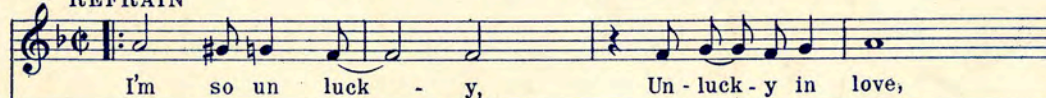
The Call of The South

CHORUS



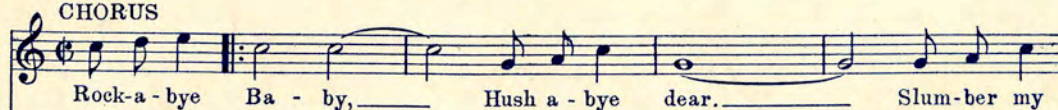
UNLUCKY IN LOVE

REFRAIN



Rockabye Baby

CHORUS



Copyright MCMXXIV by IRVING BERLIN Inc. 1607 Broadway, N.Y.C.
International Copyright Secured Made in U.S.A. All Rights Reserved

COPIES ON SALE WHEREVER MUSIC IS SOLD
These Numbers can also be had for your Phonograph and Player Piano