

Connecticut College

## Digital Commons @ Connecticut College

---

Historic Sheet Music Collection

Greer Music Library

---

1926

### I'd Climb The Highest Mountain If I Knew I'd Find You

Lew Brown

Sidney Clare

Follow this and additional works at: <https://digitalcommons.conncoll.edu/sheetmusic>

---

#### Recommended Citation

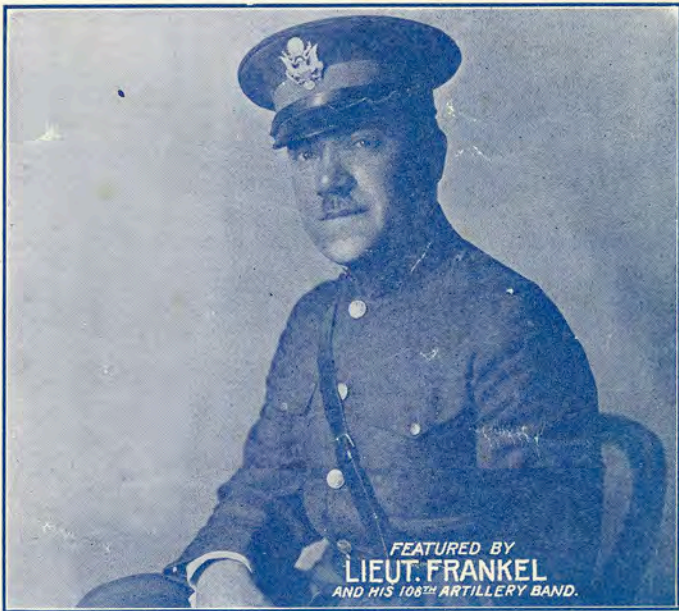
Brown, Lew and Clare, Sidney, "I'd Climb The Highest Mountain If I Knew I'd Find You" (1926). *Historic Sheet Music Collection*. 1830.

<https://digitalcommons.conncoll.edu/sheetmusic/1830>

This Score is brought to you for free and open access by the Greer Music Library at Digital Commons @ Connecticut College. It has been accepted for inclusion in Historic Sheet Music Collection by an authorized administrator of Digital Commons @ Connecticut College. For more information, please contact [bpancier@conncoll.edu](mailto:bpancier@conncoll.edu).

The views expressed in this paper are solely those of the author.

# I'D CLIMB THE HIGHEST MOUNTAIN IF I KNEW I'D FIND YOU



FEATURED BY  
LIEUT. FRANKEL  
AND HIS 108<sup>TH</sup> ARTILLERY BAND.

MADE IN  
USA

LEFF

Words & Music  
by  
LEW BROWN  
and  
SIDNEY CLARE



Irving Berlin, Inc.  
MUSIC PUBLISHERS  
1607 Broadway New York

# I'D CLIMB THE HIGHEST MOUNTAIN IF I KNEW I'D FIND YOU

Tune Ukulele  
A D F# B  
Put Ukulele Capo on 1st fret

Words and Music by  
LEW BROWN  
and SIDNEY CLARE

Moderato

First system of piano introduction. Treble clef, bass clef, key signature of two flats (Bb, Eb), time signature of 4/4. Starts with a forte (f) dynamic. The right hand plays chords and moving lines, while the left hand plays a steady bass line.

Second system of piano introduction. Continues the musical theme from the first system, featuring similar chordal textures and melodic lines in both hands.

Vocal entry and piano accompaniment. The vocal line begins with the lyrics "I don't know where you / I know that I'm to". Above the vocal line are two ukulele chord diagrams. The piano accompaniment starts with a "Vamp" section marked with a repeat sign and a piano (p) dynamic. The right hand plays chords, and the left hand plays a bass line.

Continuation of the vocal line and piano accompaniment. The vocal line continues with the lyrics "are blame / I don't know if you still / That's why we've drifted a". Above the vocal line are two more ukulele chord diagrams. The piano accompaniment continues with the same harmonic structure as the previous system.

Ukulele Arrangement by MAY SINGHI BREEN

Copyright MCMXXVI by IRVING BERLIN, Inc., 1607 Broadway, New York

All Rights Reserved

MADE in U. S. A.

International Copyright Secured

care - part I on - ly know that  
But if you knew what

I miss you so I've searched for  
I'm go - ing through You would for -

you ev - 'ry - where.  
- give me sweet - heart.

CHORUS

I'd climb the high - est moun - tain if I knew that when I  
I'd climb the high - est moun - tain if I knew that when I

*p-f*

climbed that moun-tain I'd find you  
 climbed that moun-tain I'd find you

I'd swim the deep - est riv - er if I  
 I'd pay the price of sor - row if I

knew that when I swam that riv - er I'd find  
 on - ly knew that some to - mor - row I'd find

you. With - out you dear, my life means  
 you. There's not a sin - gle thing that

noth- ing to me — no mat- ter where you are that's  
I would- n't dare — if I knew that you would be

where I want to be — I'd pray to get to Heav- en 'Cause I  
wait- ing for me there — I'd give my great- est treas- ure If I

know that if I got to Heav- en I'd find  
knew by giv- ing up that treas- ure I'd find

1. you. — I'd you. —  
you. — I'd you. —



# THE NEW FOX-TROT SONG HIT IRVING BERLIN'S HOW MANY TIMES

## CHORUS

How man-y times have you said- I love you-

How man-y times- have you said- I'll be true-

How man-y won - der-ful sweet-ies have you told that to -

Copyright MCMXXVI by IRVING BERLIN Inc., 1607 Broadway N.Y.C.  
International Copyright Secured Made in U.S.A. All Rights Reserved

COPIES ON SALE WHEREVER MUSIC IS SOLD  
This Number can also be had for your Phonograph and Player Piano