

Connecticut College

Digital Commons @ Connecticut College

Historic Sheet Music Collection

Greer Music Library

1926

I Never See Maggie Alone

Harry Tilsley

Everett Lynton

Follow this and additional works at: <https://digitalcommons.conncoll.edu/sheetmusic>

Recommended Citation

Tilsley, Harry and Lynton, Everett, "I Never See Maggie Alone" (1926). *Historic Sheet Music Collection*. 1844.

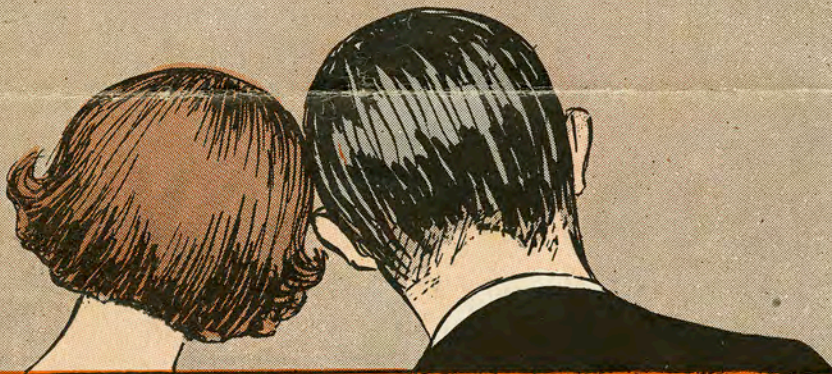
<https://digitalcommons.conncoll.edu/sheetmusic/1844>

This Score is brought to you for free and open access by the Greer Music Library at Digital Commons @ Connecticut College. It has been accepted for inclusion in Historic Sheet Music Collection by an authorized administrator of Digital Commons @ Connecticut College. For more information, please contact bpancier@conncoll.edu.

The views expressed in this paper are solely those of the author.

I NEVER SEE MAGGIE ALONE

Mae West Sings



WORDS BY
HARRY TILSLEY

MUSIC BY
EVERETT LYNTON

MADE IN
USA



Irving Berlin, Inc.
MUSIC PUBLISHERS
1607 Broadway New York

ORDER CODE
"MAGGIE"

I NEVER SEE MAGGIE ALONE

Words by
HARRY TILSLEY

Tune Ukulele or
BANJULELE BANJO
A D F# B

Music by
EVERETT LYNTON

Moderato

Piano

f

Detailed description: This block contains the piano introduction. It features a grand staff with treble and bass clefs. The tempo is marked 'Moderato'. The music begins with a forte (*f*) dynamic. The melody is primarily in the treble clef, while the bass clef provides a steady accompaniment. There are several slurs and accents throughout the piece.

Vamp

p

Detailed description: This block continues the piano accompaniment. It includes a section marked 'Vamp' with a piano (*p*) dynamic. The notation shows a mix of chords and moving lines in both hands, with some triplets and slurs.

VOICE

Mag - gie dear just won't go out a - lone, Seems that she's
Mag - gie dear is ver - y sweet to me, When she's

Detailed description: This block contains the first line of the vocal melody. It is written on a single treble clef staff. The lyrics are: 'Mag - gie dear just won't go out a - lone, Seems that she's' and 'Mag - gie dear is ver - y sweet to me, When she's'. There are guitar chord diagrams above the notes.

p

Detailed description: This block shows the piano accompaniment for the first vocal line. It features a grand staff with treble and bass clefs. The dynamics include piano (*p*). The accompaniment consists of chords and simple rhythmic patterns.

she must have a chap - e - rone, When we go out, No
near I'm hap - py as can be, I long to say, "I

Detailed description: This block contains the second line of the vocal melody. The lyrics are: 'she must have a chap - e - rone, When we go out, No' and 'near I'm hap - py as can be, I long to say, "I'. There are guitar chord diagrams above the notes.

Detailed description: This block shows the piano accompaniment for the second vocal line. It features a grand staff with treble and bass clefs. The accompaniment continues with chords and rhythmic patterns.

Ukulele Arr. by MAY SINGHI BREEN

mat-ter where we're bound, There is al-ways some bod-y a-round.
 want you for my own" But I nev-er can see her a-lone.

CHORUS

She brings her fa-ther, her moth-er, her sis-ter and her broth-er, Oh I
 She brings her fa-ther, her moth-er, her sis-ter and her broth-er, Oh I

nev-er see Mag-gie a-lone. She brings her un-cles and cous-ins, She's
 nev-er see Mag-gie a-lone. One night while we were out walk-ing, And

got 'em by the doz-ens, I nev-er see Mag-gie a-lone,
 she got tir-ed talk-ing, She in-vit-ed me up to her home,

— And if I 'phone her, Say to her sweet,—
— I turned the lights down, They were too bright,—

Where shall we meet. — Sup - pos - ing that we eat, She brings her
Oh what a night. — When I turned on the light, There was her

fa - ther, her moth - er, her sis - ter and her broth - er, Oh I nev - er see
fa - ther, her moth - er, her sis - ter and her broth - er, Oh I nev - er see

Mag - gie a - lone. She brings her lone. —
Mag - gie a - lone. lone. —

I NEVER SEE MAGGIE ALONE

EXTRA CHORUSES

She brings her father, her mother, her sister and her brother,
Oh, I NEVER SEE MAGGIE ALONE
Across the court yard is my house—
One night I looked in her house—and saw her retiring alone
She had a figure—that was divine,
Just at the time—when ev'rything looked fine,
In walked her father, her mother, her sister and her brother,
Oh, I NEVER SEE MAGGIE ALONE.

I bought a roadster—two seated
I even had it heated
So that I could see Maggie alone,
While we were riding—and kissing,
The engine started missing,
And we were a long way from home,
I got right out then—as fast as I could,
Found what was wrong—for when I raised the hood,
There was her father—her mother, her sister and her brother
Oh, I NEVER HAVE MAGGIE ALONE.

To be an actress—she planned it
Upon the stage she landed
So I went to see Maggie alone,
I knew that I'd be delighted
I sat down so excited,
Waiting for Maggie—my own
There was a chorus—of fifty or so
Maggie was there—right in the second row
So was her father, her mother, her sister and her brother
Oh, I NEVER SEE MAGGIE ALONE.

One day she said 'she was wishing'
That I would take her fishing
So I knew I'd see Maggie alone,
In a canoe then—we two then,
Went gliding o'er the water
Far from the noise of her home
I threw the line in—thought I'd catch trout
I got a bite—and pulled the line right out
There was her father, her mother, her sister and her brother
Oh, I NEVER SEE MAGGIE ALONE.

THIS
NUMBER
can
be had
for your
Phonograph
or your
Player -
Piano

STANDARDS OF THE WORLD

"STERLING" ON SILVER
"IRVING BERLIN" ON SONGS

THE SWEETHEARTS' FAVORITE SONG

I'M TELLIN' THE BIRDS -- TELLIN' THE BEES HOW I LOVE YOU

By
LEW BROWN
and
CLIFF FRIEND

CHORUS

I'm tell - in' the birds, tell - in' the bees, tell - in' the flow'rs, tell - in' the trees How

I love you — I'm tell - in' the moon,

tell - in' the sun, tell - in' the stars, tell - in' each one how I

Copyright MCMXXVI by IRVING BERLIN, Inc., 1607 B'way, N.Y.
International Copyright Secured Made in U.S.A. All Rights Reserved

COPIES ON SALE WHEREVER MUSIC IS SOLD
This Number can also be had for your Phonograph and Player Piano