

Connecticut College

Digital Commons @ Connecticut College

1925-1926

Student Newspapers

10-2-1925

Connecticut College News Vol. 11 No. 1

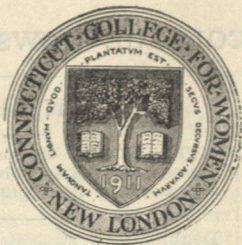
Connecticut College

Follow this and additional works at: https://digitalcommons.conncoll.edu/ccnews_1925_1926

Recommended Citation

Connecticut College, "Connecticut College News Vol. 11 No. 1" (1925). 1925-1926. 25.
https://digitalcommons.conncoll.edu/ccnews_1925_1926/25

This Newspaper is brought to you for free and open access by the Student Newspapers at Digital Commons @ Connecticut College. It has been accepted for inclusion in 1925-1926 by an authorized administrator of Digital Commons @ Connecticut College. For more information, please contact bpancier@conncoll.edu.
The views expressed in this paper are solely those of the author.



CONCERT COURSE PROMISES SUPERIOR TREAT.

In speaking of the Connecticut College concert series for the coming season, it is hard to avoid superlatives. The Connecticut College course has by this time established itself in the community, and its high standards are well recognized. It has consistently stood for the best talent that could be procured and has in past years gladdened the hearts of local music-lovers with many a treat of metropolitan excellence. The series scheduled for this season, however, may be said to surpass even the best ever given here before. It would not be possible to engage, at any price, in any place a better group of attractions than those announced by the committee. They represent the top-notch of the season's talent.

The New York Philharmonic orchestra has become an established local favorite. Under Stransky and Hoogstraten it has electrified our audiences. This year the great Mengelberg will personally conduct the local concert. He is generally considered the most electric, the most dynamic of all living conductors. For the symphony, he has chosen Brahms' Second, a charming and melodious work. This concert should be a red-letter day in local musical annals.

Then there is the Bauer-Gabrilowitsch two-piano recital. Here are two of the world's greatest concert-pianists, each an eminent virtuoso in his own right, but each a seasoned two-piano performer as well. The two-piano literature has only recently been exploited, but it opens up a wealth of beauty which cannot fail to appeal to every music-lover. Gabrilowitsch, the son-in-law of Mark Twain, has also become famous as the Conductor of the Detroit Symphony Orchestra.

Of the Elshuco Trio one can say much, though, after the fine concert it gave in Bulkeley Auditorium in a former series, it needs no introduction. They are a group of solo-artists who have consecrated themselves to the presentation of one of the most beautiful and most difficult forms of music, and their programs are a delight. They represent in their fields, as does the Flonzaley quartet in another closely allied, the very highest perfection.

In Martenelli many critics see the successor of Caruso. Martenelli many years was outstanding as one of Caruso's greatest rivals, but the death of the great tenor left Martenelli almost in a class by himself. He represents the true Italian style of song.

These are the numbers comprising the regular course. But the committee has found it possible to secure an additional attraction of the same grade which it offers as an extra number. Jacques Thibaud is the supreme French violinist of our time. What that means can readily be understood by anyone who remembers the great contribution of France to violin music. Thibaud is not only a great violinist but also a heroic man who won his laurels in the French army during the war. He exemplifies the French type

Continued on page 2, column 3.

Proclamation.

September 30, 1925.

We of that most esteemed and revered class of one thousand nine hundred and twenty-six, take great, and unaccustomed pleasure in descending for the moment from our Peak of Superiority to the Level of Common ground, in order that we may demonstrate and obviate for the more tender and less fertile minds of CONNECTICUT COLLEGE the beautiful fact that we have attained the position of Unsurmountable Imperturbability. But ever have the Divine Sisters of 1926 been cautious and careful in all contact with Inferiority. Thus in our brief moment of Condescension do we proclaim those mediums through which we will display our Unprecedented Position. Listen well, Oh, ye Underlings, that your feet may not falter in paying Homage at the door of Seniority.

For On All Occasions Will We Alone Be Privileged To:

First: Follow the illustrious example of all sagacious Seniors who have prettily pursued the customs of Galoshes that Flap and Buckles that Clank.

Second: Solemnly and Sacredly, tread across the threshold and Procure our correspondence in the Interim between 8.45 and 9.15.

Third: Observe that most pleasant custom, and again create that most charming landscape of cap and gown surmounting curbstones.

Fourth: Proceed with cautious and constant aplomb into those refectories wherein are served unparalleled viands and ambrosias. And such shall be the procedure, that no underling shall enter these precincts until the last SENIOR has progressed five paces within the banquet hall.

Fifth: Receive unparalleled precedence of attention when about to enter into Economic Entreaty in the College Emporium for the buying and selling of books.

Sixth: Join in most gracious and grateful banqueting around the peerless board of Colonial House on Sunday evenings. So great shall be our needs, and so generous those in command, that all others of inferior rank will of necessity seek other places of refreshment.

Furthermore—Whenever, and wherever precedence of any variety may be suitably exhibited—let it be done with grace and charming demeanor.

Signed hereby in the trust of Validity.

HELEN HOOD.

IN MEMORIAM.

VIRGINIA ARNOLD

Class of 1927

Died July 28

At Lucerne, Switzerland

Faculty Adds Twelve.

Changes Announced.

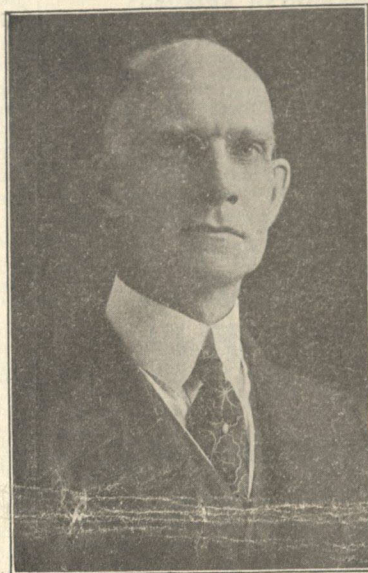
Twelve new instructors have been added to the faculty at the college this year and three instructors have been granted a leave of absence. Dr. Caroline Black has entered Harvard for a year of study there. Mrs. B. B. Wessel has been granted a year's leave of absence for sociological research under the joint auspices of Brown University and Connecticut College. Miss Mary McKee has an extension of absence to continue her studies at Yale for her Doctorate of Philosophy in chemistry. Dr. Eloise Cole, assistant professor of Latin, is spending the year abroad. Among the new faculty, Miss Alice Fairchild is assistant professor of Home Economics. She received her A. B. at Oberlin College in 1912, B. S. at Teachers' College, 1913, and her M. A. at Teachers' College in 1919. She has had experience at the College of Industrial Arts, Denton, Texas, 1913 to 1918; at the Rockford College, Rockford, Illinois, 1919-1921; and in the Cornell University Extension Service, 1923-1925. Miss Evelyn Fernald is substituting for Miss Black as assistant professor of Botany. She received her A. B. at Vassar, 1912, M. A. at Cornell, 1920, Ph. D. at Cornell University, 1924. Miss Fernald taught at Newton High School, Newton, Mass., 1912-1914, Hopedale High School, Hopedale, Mass., 1915, Normal School, Framingham, Mass., 1915-1918, Women's College, Newark, Del., 1918-1919, Cornell University, 1919-1924, and at Rockford College, Rockford, Ill., 1924-1925. Dr. Mary Hall James is substituting for Mrs. Wessel as assistant professor of Economics and Sociology. She received her Ph. B. from Brown University, 1909, A. M. 1923, Ph. D., 1925. She taught at the Providence Public Schools, 1905-1909, Pembroke School, Calgary, Alberta, 1913-1914, supervised recreation at Edmonton, Alberta, 1914, and taught at the Providence Public Schools, 1922-1925. Miss Alice Chapman is an English Instructor, A. B. Wellesley, 1923. She has had experience at the Catherine Gibbs School, 1923-1924, Norwich High School, Norwich, N. Y., 1924, and at the Sherburne High School, Sherburne, N. Y., 1924-1925. Miss Catherine Oakes, an English instructor, has had her A. B. at Wellesley, 1915, M. A., 1917, and has studied at the University of Edinburgh, 1921-1922, and at the University of London, 1924. She has taught at Wellesley, 1917-1919, Putnam Hall, 1920-1921, Stuart Hall, Staunton, Va., 1922-1924, and at Wellesley, 1925. Miss Margaret Ives, Connecticut College, 1919; S. of F. A. at the School of Crafts, Decoration, and Arts, Boston; is an instructor in the Department of Fine Arts. She has been Decoration and Vocational Director in the Department of Public Health, Burlington, Vermont, 1920-1925. Miss Ellen Hulbert, Mt. Holyoke, 1925, is assistant Zoology instructor. Miss Evelyn Man, Wellesley, 1925, is an assistant professor of Chemistry. Miss Meta B. Aussieker, A. B. Coe College, 1902, is a cataloguer in the library. She has had training at Cedar Rapids, Ia., the

Continued on page 2, column 2.

CHAPEL OPENS COLLEGE YEAR.

President Addresses Students.

The eleventh year of the life of the College opened formally with the chapel exercises of September 23. The faculty in academic procession, mar-



shalled by Dr. Dederer and Dr. Kip, followed the choir and the Senior class into the gymnasium. There, the faculty took places on the platform. After a service of worship, President Marshall addressed the student body.

With the beginning of the present semester the second decade of Connecticut College is entered upon. "In these days," said the president, "the college world assembles." The present college generation is introspective, prone to wonder just what is the purpose of college. Students are restless, the colleges themselves are undergoing self-examination. The young college, unbound by traditional conservatism, should easily avoid the pitfalls into which higher educational institutions so often stumble.

Three necessities face the modern colleges of America: 1. They must recover, recapture, and re-exalt the intellectual ideal. Unfortunately, today it is the "thing" to go to college, and too many seek a college education merely because it is fashionable. The college should be a place of more intense intellectual atmosphere. It has become too much a place of play. 2. The colleges must so choose students that their characteristics will prove to include college spirit and intellectual power. 3. The colleges must honor the intellectual.

A young, modern, live college—this college—cannot be forgiven for intellectual failure or spiritual decadence. The ideals and purposes of the college must never be dimmed or obscured. Since the primary factor in college is intellectual, the "major sport" of each student should be her studies. The spirit of the college can be found in those oft repeated words:

Continued on page 2, column 3.

Connecticut College News

ESTABLISHED 1916

Issued by the students of Connecticut College every Friday throughout the college year from October to June, except during mid-years and vacations.

Entered as second class matter at the Post Office at New London, Connecticut.

STAFF

EDITOR-IN-CHIEF
Pauline Warner '26

NEWS EDITOR
Barbara Tracy '27

REPORTERS

Barbara Brooks '26

Hazel Osborne '26

Marie Copp '27

Margaret Moore '27

Hazel Pendleton '27

Grace Bigelow '28

Josephine Henderson '28

Anna Lundgren '28

Louise Towne '28

MANAGING EDITOR
Irene Peterson '26

ASSISTANT MANAGING EDITORS

Dorothy Goldman '27

Helen McKee '27

Ione Barrett '28

Elizabeth Sweet '28

BUSINESS MANAGER
Harriet Taylor '27

FACULTY ADVISOR
Dr. Henry W. Lawrence, Jr.

EDITORIAL.

SO THIS IS COLLEGE.

The class of 1926 is with us, registered, resided, and thoroughly identified with the college body. The class of 1929 is now being welcomed by every organization on the campus. The *News* wishes to offer welcome too, holding out the hand of friendship to Connecticut's new daughters.

College, you will find, is something new in your experience. The academic life, the social life, the form of government are all more or less unique. But if instead of matriculating in a college you had entered on a tour of foreign countries, or a vocation in industry, or a career in some field of art, you would have discovered much that was novel, and comparable in its newness to the novelties met in college life.

An individual's natural life lasts from birth to death. To be normal, it does not necessarily include travel, industry, art or college. However, if one chances to experience any of these, he does it during the span between birth and death.

College, then, is not a suspension of living. It is living. It is not to be regarded as four years out of life. It is very much four years in life. Living is a day to day affair which does not start at commencement time when the student formally enters the world, but is rather a continuous performance from which there is no intermission. Too often, students look at college as a phase of experience apart from the rest of life. This attitude tends to make the four years in college either a great deal better or a great deal worse than the years before and after. In either case, they stand out as remarkable and not to be judged by the same standards as the other years.

But college is life, just as later on a career is life. At present, college is our career. Just because "this is college," don't sink below your level of life, but rather push your level higher! Because, this is life.

FROM THE MOUTHS OF FRESHMEN.

"I'm not paying the Blanket Tax, because I brought my own."

Describing the gymnasium: "It's that funny building that looks as if it didn't belong here."

THE LOITERER.

In the Nature of an Introduction.

For a great many years, probably several, at least one or two, the Editors of the *News*, and others interested in making the *News* an organ of speech for the expression of the most vital activities of Alma Mater have cherished a somewhat apathetic hope that some day, and somehow their ambitions would come true, and their Utopias would be realized. So, in pursuance of this idea, they have now appointed from among them one whose mission it will be to give verbal form to all the indistinct and often misunderstood caresses and admonitions of this our foster mother. From among the children The Loiterer has been chosen. It will be her duty and privilege to wander, unreservedly, sometimes stooping low to apply her ear gently to the campus so that she may better understand the meaning and purpose of the footfalls and ululations heard thereon.

But never, no, no, never will she be discovered. Always, yes, yes, always will she uncover her magic ear in the darkest part of the night. And if ever a stray somnambulant student should collide with her, and perceive her identity, always on penalty of death will that collegian guard the secret. Beware, O ye fortune hunters.

Thus from behind her cloudy veil of anonymity will The Loiterer speak, kindly and without avarice, hoping to entertain and employ the college mind with matters of importance and interest. And in return for all this kindness she asks so little—only that you do not lift the veil, but remain sweetly subservient to her written words of worldly wisdom.

And because she believes in you she casts a pearly platitude at the feet of the Freshmen. For is it not true that the beauty of Freshman year is that most students take college seriously, and the pathos of later years, that they take themselves seriously? A nice moral motto consistent with this is "Live blythely and love beauty, it is at best a fragile flower."

And in respectful postscript The Loiterer encourages the student body to help her in her observations. She gladly offers a large portion of her veil to anyone who desires its shadowy, sheltering recesses. Do but address her in care of the Editor. Be kind to her, and give no cause to attempt an autobiography on the order of the one composed by the wife of Sir Herbert Beerbohm Tree—

"This is the life of little me
I am the wife of Beerbohm Tree—"
which could easily be adapted to read—
"This is the life of little me
I try to write a column for C. C."

FACULTY ADDS TWELVE.

Concluded from page 1, column 3.

Masonic Library of Ia., the U. S. Bureau of Education Library, Washington, D. C., National City Financial Library, N. Y.; and the State College of Washington Library, Pullman, Wash. Miss May Hall Fisher, A. B. Randolph Macon Women's College, 1920, Library School of Wisconsin, 1924-1925; is also a cataloguer at the library. She officiated as librarian at the Sharon Free Library, Sharon, Pa. Miss Esther Hull, Norwich Academy, 1913-1915, and the Lawrence Associated Memorial Hospitals, 1922, is a nurse at the Infirmary. Miss Agnes Leahy, Connecticut College 1920, is assistant professor of Psychology.

OPEN LETTER.

[The Editors of the *News* do not hold themselves responsible for the opinions expressed in this column.]

Dear '25:

Here we are back on the hilltop again—the same old place,—yet different from what you knew, for '26 fills your seats at chapel and your position on the senior curb-stones while '29, is following merrily along. '29! Doesn't the name seem queer? At least it's a fine number for rhymes. We'll probably be shouting out across the new hockey field in a week or so:

Oh, here's to twenty-nine.
Doesn't she look fine
Backing up her line
Twenty-nine!

—or some such lingo.

It's a good class, equal to carrying the purple and gold,—level-headed people who went through the registration ordeal with less fuss and confusion than we ever did, I can tell you.

The week has been gloriously bright—blue sky, blue river, just as you knew it best. Surely, "C. C.'s" colors are well chosen. I was glad the days were so fine for who likes to have her favorite subject dull and grey when visitors come?

You must come back and see all the newest additions. Colonial House is so attractive, the show spot of the campus. It has been flooded with visitors all week long. One has only to stand over on the new athletic field and look across the new lawn to the Library, with Colonial on the left and New London Hall on the right to feel that "C. C." is really becoming palatial.

There is much new lawn, and a long tempting length of new curb-stones for us to keep off of! You ought to come run on it. New faculty too! So many new assistants that one has to be careful at first to find out who are Faculty and who are Freshmen. I suppose most of you are going under the title of "teacher" yourselves—Is it fun?

The opening days are as ever,—dining-hall rushes, bookstore jams and posture tests. Intensive studying too, for we all have made new resolutions. Things will be settled down soon, though, and '29 will have forgotten their prep school days, and we will be back in the swing.

You must come back to visit. You won't have to chaperone us for we are no longer the young things you knew. Indeed we are quite dignified. Come back for old time's sake and see your lantern gleaming a welcome in the doorway.

Yours, '27.

CHAPEL OPENS COLLEGE YEAR.

Concluded from page 1, column 4.

"Whatever we do, let us do it beautifully."

College Honors Faculty.

President Marshall proceeded, in obedience to a vote of the trustees, to confer the honorary degree of Master of Arts on Associate Professor Carola Ernst of the Department of Romance Languages and Associate Professor Henry Bill Selden of the Department of Fine Arts, as an expression of the appreciation of their loyal service to the college during its first decade.

CONCERT COURSE PROMISES SUPERIOR TREAT.

Concluded from page 1, column 1.

of artistry, at its best. His art is mature and mellow. It is mastery without exploitation, interpretation without exaggeration. He is the greatest violinist, except Kreisler with whom he has much in common, to be brought to New London by the Connecticut college course.

CHANGES MARK CAMPUS.

"That's what I like about this College," some one said. "Every time I return something has been changed, something improved."

It is so much fun to watch the plans for improvements in grounds being gradually worked out, and to guess what will come next. So this year, the changes which seem natural enough to the class of '29 to whom everything is new, seem one more step, to us toward the goal of a beautiful campus.

The new lawn by Colonial House is the biggest surprise, no boulders, no cross-cut paths to the state road! Instead, there are winding walks to Colonial House and from New London Hall to the Library. Have you gone far enough toward the new athletic field to see the wide granite steps leading down to it? If you haven't it will come as a big surprise when you start your hockey season.

We have been promised a second new athletic field to parallel this one and six new tennis courts at the farther end of the field. These will take the place of the two which have been changed into lawn.

The Seniors, no doubt, were the first to notice the new length of curbing extending past the Library to the State road. More temptation in the way of underclassmen! Arrangements are being made to light this section also.

But there are other changes too: the flagpole has been set out in front of New London Hall; the green garages have been moved. Here and there new bushes and fir trees have been set out; the ivy won't take so many years to cover Branford as we once imagined; and the very trees have completed several years' growth in one summer.

For Young Ladies of Particular Taste

THE VENUS SHOP

93 STATE STREET

Specializing in

NOVELTY HOSIERY

NOVELTY GLOVES

NECKWEAR and LINGERIE

Always Something Pleasingly Different

RUDDY & COSTELLO

Incorporated

JEWELERS and OPTICIANS

52 State Street

NEW LONDON, CONNECTICUT

The Woman's Shoppe

236 State Street, New London

The Smartest and Best in
Women's Wear

GOWNS, COATS

LINGERIE, HATS

All at special discount to
Connecticut College
Students

PATERSON

State Street

New London,

Conn.

CLASS OF 1929

Name	Home Address	College Address	Preparatory School	Offices Held	Hobbies
ACKERMAN, RUTH — Closter, N. J. Thatcher Dwight School for Girls, Englewood, N. J. Music		BRISTOL, MARGARET REXFORD — "Migs," "Peg" Foxboro, Mass. Branford Foxboro High School, Bradford Acad- emy Vice-President (1); President (2, 3, 4) Vice-President Athletic Association; Manager Basketball (3) Skating	FEINSTEIN, ANNETTE SYLVIA — "Ann" New Haven, Conn. Thatcher New Haven High School Secretary Chemistry Club; Vice-Presi- dent Girl's Debating Society Swimming, hiking, reading		HOUSTON, GRACE E. —"Beth" Norberth, Penn. New London, Conn. Lower Merion High School President Freshman Class; President Musical Club; Debating Team; Hockey Team Athletics, singing
ADAMS, CLARA — Troy, N. Y. Branford Emma Willard School Driving, dramatics		BROWN, ARLINE CLARK — "Peggy," "Art" Derby, Conn. Branford Swimming	FENTON, FRANCES — New Rochelle, N. Y. Chairman Property Committee; Dra- matics Athletics, antiques		HOWLETT, RUTH BUNKER —"Bunky" Jackson, Mich. Bannon Jackson High School Vice-President Senior Class; Secretary of Junior Class; Vice-President of Library Club; Editor-in-Chief of Year Book Swimming
ADAMS, DOROTHY —"Dot" Norwalk, Conn. Branford St. Margaret's, Waterbury, Conn. Swimming, camping		BURROUGHS, MARGARET A. —"Peg" Madison, N. J. Plant Kent Place School, Summit, N. J. Golf, dancing	FREAR, FRANCES WRIGHT —"Fran" Troy Emma Willard School Branford Student Council; Secretary Class (1 and 2); Business Manager Year Book Dramatics		HUBBARD, FRANCES E. —"France" Meriden, Conn. Branford Washington High School Walking
AIKENS, KATHERINE —"Kate" Upper Darby, Pa. Shields Staff of magazine; Officer of Council		CAPEN, KATHERINE ELLIS — "Kat," "Kitty" Sharon, Mass. Thatcher Bishop, Hopkins Hall, Burlington, Vt. Riding, reading	FRIEDMAN, KATHERINE —"Kay" Chicago, Ill. Shields Franklin High School Class Councillor of Stu. G; Staff of Year Book (4 years)		HULBERT, HELEN M. — Chicago, Ill. Blackstone Ossining School President Sophomore Class; President Senior Class; Manager Varsity Hockey; Senior Editor Year Book; Secretary A. A. Reading, athletics, dancing
ALEXANDER, ANNE — Norwich, Conn.		CARNS, MARGARET —"Peg" New York City Branford Horace Mann High School Alumnae Editor; Secretary-Treasurer Glee Club; Chairman Poster Committee Acting, staging, athletics, art	FULLER, NELLIE ELIZABETH — Sheffield, Conn. Bosworth Suffield Academy Class Historian; Treasurer of Lesbians Reading		HUNT, BARBARA —"Bobby" Worcester, Mass. Blackstone North High School Vice-President French Club Horseback riding, driving
ANDERSON ADELINE — Naugatuck, Conn. North Kendall Hall President of Class; Secretary of Y. W. C. A. Sports		CLARK, PRISCILLA —"Pris" Waterville, Maine Blackstone Vice-President of Class; Captain Basketball; Baseball; President League and Outing Club; Y. W. C. A. Cabinet Member All sports	GOODMAN, LOUISE — Memphis, Tenn. Bannon St. Mary's School, Memphis Proctor of Student Government; Vice- President Dramatic Club		ILLING MARION —"Chick" Naugatuck, Conn. Blackstone Naugatuck High School Assistant Editor of "Anabasis" Study of Medicine
ANDERSON, MARGARET — "Marg," "Andy" East Orange, N. J. Thames East Orange High School		COCHRAN, JOAN Cincinnati, Ohio Bosworth Oakhurst School President Freshman Class; Joke Edi- tor Year Book	GOVE, MARJORIE KEITH —"Smudge" Campello, Mass. Bosworth Brochton High School Member Executive Committee; Captain Basketball Golf, basketball, dancing		JACKMAN, MARGARET S. — Concord, N. H. East Orange, N. J. Branford East Orange High School, Lasell Sem- inary Vice-President Senior Class Drawing
ARNOLD, JOSEPHINE —"Jo" Chicago, Ill. Bosworth University of Chicago High School Horseback riding, reading		CONANT, ESTHER M. — Littleton, Mass. Plant Littleton High School Treasurer of Class Swimming, basketball	GREEN, AMELIA —"Greenie" St. Mary's, Pa. Bosworth Penn. Hall President Class (4); Varsity Hockey; Annual Staff		JACOBSEN, MIRIAM CONSTANCE — "Connie" Glen Ridge, N. J. Blackstone Riding
AYRES, TIRZAH —"Tirz" Bennington, Vt. Branford Miss Madeira's School, Washington, D. C. Secretary (1); President (3); Hockey Manager Golf, dancing		CONGDON, KATHERINE — "Kay," "Congie" Upper Montclair, N. J. Plant Montclair High School Secretary Class (4); Vice-President Senior Forum; Senior Sub Council; Edi- tor School Magazine; Secretary Circle Francaise Dancing, tennis.	GREER, CATHARINE HARPER — "Speedro" Haverford, Penn. Branford Westtown School President of Student Body Riding, tennis		JOHNSTON, JULIA —"Jule" Port Leyden, New York North Emma Willard School Choir; Dramatic Club Horseback riding
BARCLAY, PHYLLIS —"Phyl" Milwaukee, Wis. Blackstone Milwaukee Seminary Treasurer of Class (2); President (4); Vice-President of Dramatic Club Dancing, camping		COOK, ETHEL LOUISE —"Etsie" Niantic, Conn. North Williams Memorial Institute President French Club (2, 3) Reading, hiking	HALL, VERNE — Hamburg, Conn. Bosworth Middletown High School		JONES, JUDITH ELLEN —"Judy" East Northfield, Mass. Branford Northfield Seminary Secretary of Class; Board of School Paper; Member of N. S. C. Y.; Choir; Cheer Leader of Dormitory Basketball
BARTLETT, KATHERINE —"Kay" Marblehead, Mass. Branford Marblehead High School President of Dramatic Club; Editor of School Paper Swimming, sailing, motoring		COPELAND, JENNIE —"Jiggsie" New London, Conn. Williams Memorial Institute Basketball, French	HALPERIN, SUSAN —"Tootsie" New Haven, Conn. Thatcher Dramatics dancing, all sports		KAHLE, HELEN MARIE — Cleveland, Ohio Shields Laurel School Dramatics, music, reading, dancing
BARTLETT, MADELINE —"Bart" Waterbury, Conn. MacDuffie School, Springfield, Mass. Editor School Magazine; Student Gov- ernment Representative Languages, music		CUMMINGS, KATHERINE —"Kay" Sheridan, Wyoming Sheridan High School Blackstone	HAMLET, JEAN —"Jeanie" New London, Conn. Punahou Academy, Honolulu Secretary of Class Swimming		KANE, HELEN ELIZABETH —"Betty" Hartford, Conn. Blackstone Weaver High School Secretary French Club; Class Essayist
BAUER, MARIAN —"Peggy" Chicago, Ill. Bannon University High School Captain of Athletic Teams Athletics		DANCE, EDITH —"Edie" Wayne, Penn. President Student Council (4); Sec- retary-Treasurer (3); Class Secretary Horseback riding	HEILPERN, ANNA JEAN —"Ann" Hartford, Conn. Plant Weaver High School Vice-President and Treasurer of Dra- matic Club; Secretary of Student Coun- cil; Class Book Editorial Board; Class Prophetess; President Girls' League; President Classical Club; Glee Club		KARFIOL, VIRGINIE —"Verge" New York City Bosworth Julia Richman Class Chairman; Sect. Officer; Chair- man Poster Committee Reading
BEEBE, DOROTHY —"Dot," "B. B." Storrs, Conn. North Windham High School Sports		DEAN, MARY CONSTANCE —"Jippy" Cleveland, Ohio Plant Hathaway-Brown School School Vice-President (4); Class Pres- ident (2); Editor School Paper (3); Student Council Member 3 years; Year Book Board (4) Writing, dramatics	HEINTZ, PHYLLIS MARGARET —"Phil" Hartford, Conn. Branford Hartford Public High School President French Club; Dramatic Club; Editor-in-Chief "Chronicle"; Prophetess of Class Dramatics		KELLER, GENEVIEVE — West Haven, Conn. KELSEY, ABBIE — Jersey City, N. J. KENDRICK, MURIEL S. —"Ken" East Northfield, Mass. Bosworth Northfield Seminary Editorial Board School Paper; Forum Committee; Athletic Committee Skating, mandolin, athletics, books
BELL, MARY KATHERINE — Cleveland, O. Bosworth Penn Hall President of Class (2); Treasurer (4); Council; Annual Board		DUDLEY, RUTH —"Dud" Elizabethtown, N. Y. Shields Elizabethtown High School President Class (1); Secretary Class (4) Athletics, reading	HERBERT, HELEN —"Slivers" Elmhurst, N. Y. Newtown High School Secretary of the Girls' Welfare Coun- cil Scrap books		KENNEDY, NORMAN F. —"Norm" Shaker Heights, Cleveland, O. Shields Shaker Heights High School Class Secretary; Secretary A. A.; Dra- matic Club; Treasurer Friendship Club; Board of Control Sports, reading
BELL, VIRGINIA — Hillsboro, O.		EARLY, FLORA —"Pat" Rockford, Illinois North Emma Willard Dramatic Club; Glee Club Tennis	HEYWOOD, MARGARET L. —"Peggy" Ridgewood, N. J. Blackstone Ridgewood High School Dancing, singing, dramatics		KERNEN, HELEN W. —"Jackie" Westfield, Mass. Branford Westfield High School Dancing, reading, swimming
BENSON, MARY JANE —"Ben" Chicago, Ill. Thatcher Francis W. Parker School Glee Club Chairman; President-Presi- dent of Class; Reporter Dancing, riding, dramatics		ELLIS, HELEN Wilmette, Illinois Bannon Councillor of Stu. G.; President French Club; News Staff; Year Book Board Swimming, dancing, music	HINE, FLORA CASE —"Casey" New Britain, Conn. Blackstone New Britain High School Vice-President Senior Class Horseback riding, swimming and ten- nis		KINDER, THELMA —"Thel" Attawaugan, Conn. Bosworth Killingly High School Athletic Manager Basketball
BENT, BARBARA —"Bee" Clifton, Mass. Drew Seminary Swampscott High Vice-President High School Dramatic Club; Athletic Editor Year Book; Cap- tain Hockey Team (2 years) All sports		EWING, MURIEL —"Skeay" Port Deponet, Maryland Thames Class President; Student Council; Magazine Board Athletics	HOGAN, ELEANOR W. — Waterford, Conn. HOLMES, ROSAMOND S. — Mystic, Conn. HOMS, TERESA PADDOCK —"Terry" New York, N. Y. Branford Collecting coins, stamps, stones		KINNEY, JANE L. —"Petey," "Curly" Shaker Heights, Cleveland, O. North Hathaway Brown School Treasurer of Glee Club Basketball, art, music
BLANNER, FRANCES LOUISE — "Franny" Watertown, Conn. Shields		FAHEY, ELEANOR —"Chill" Boston Miss Lee's President Class (4); Member Self- Government Board; Associate Justice			
BOARDMAN, GRACE ALBERTA — "Bert," "Bud" Norwich, Conn. Norwich Free Academy Dancing					
BOND, MARY —"Bondo" Newton Centre, Mass. Thames Newton High School					
BOOMER, JANET —"Jan," "Jay" Waterbury, Conn. Branford Saint Margaret's School Class Treasurer; Captain of Lav- enders Swimming, reading					
BRIGHTWELL, FRANCES P. —"Brightie" Charleston, West Virginia Bannon The Baldwin School, Bryn Mauer, Penn. Riding, dancing, reading					

CONNECTICUT COLLEGE NEWS

KOEHLER, EDNA—"Eddie"
New York City
Branford
Robert Louis Stevenson School
President of Class (1); Vice-President of A. A.
Tennis

LANCOT, ELIZABETH—"Liz"
Buffalo, N. Y.
Blackstone
Buffalo Seminary
Chairman of Judiciary Board
Athletics

LATIMER, ELIZABETH—"Tony" or "Tee"

New London, Conn.
Williams Memorial Institute
Treasurer
Orange knicknacks

LATIMER, ELIZABETH—"Liz"
New London
Williams Memorial Institute

LATIMER, LOIS VIRGINIA—"Lolly B" "Ginger"

Norwich, Conn.
Norwich Free Academy
Dancing

LEPPER, CYNTHIA LOUISE—"Skin"
Norwood, Mass.
Bannon
McClintock School, Boston
Literary Board of Year Book

LESLIE, NITA VIOLA—"Less"

Woodbury, Conn.
Blackstone
Woodbury High School
Secretary of Class (2 years); Treasurer Class (1 year); Editor-in-Chief School Paper
Reading

LEVERONE, MARIE ROSE—"Migs"

New London
Westport, Conn.
Flant

LINDE, MARGARET ELNETTE—"Migs"
Hillside; St. Catherine, Rome; La Boardonnere, Lausanne
French Club; Italian (Lausanne) Glee Club

LINK, WINIFRED—"Winnie"

Princeton, N. J.
Shields
Miss Fine's School
Class President; Student Council; Basketball and Hockey Teams

MASON, EUNICE—"Skeex"

Forestville, Conn.
Plant
Bristol High School
Secretary Dramatic Club; Chairman Class Day

MATTHEWS, MARY McPHERSON—"Mac"

Cincinnati, Ohio
Branford
Miss Doherty's; Emma Willard
Vice-President Sophomore Class; Captain Basketball Team
Basketball, reading

McELFRESH, FRANCES ADAMS—"Fran"

Williamstown, Mass.
Blackstone
Williamstown High School, Bradford Academy
Tennis

McLAUGHLIN, ELIZABETH CHAPMAN—"Lib"

Cleveland, Ohio
Plant
Laurel School
Athletic Board; Honor Society; Art Editor Annual; Basketball, Baseball, Hockey Teams
Swimming, old furniture, art

McMILLER, ADELINE—"Mac"

Akron, Ohio
Shields
West High, Akron
Editor of Paper; Vice-President Rifle Club; Vice-President Class (3)
Sports

MICHEL, ELEANOR—"El"

Meriden, Conn.
Branford
Washington High
Treasurer Dramatic Club; President of Art Club

MINCKLER, HELEN—"Mink"

Geneseo, N. Y.
Plant
Geneseo High School
Art Editor Magazine; Member Student Council; Vice-President Fraternity

MITCHELL, MARION ERNESTINE—"Ernie"

Taunton, Mass.
Branford
Taunton High, and Mary C. Wheeler School, Providence
Volleyball; Glee Club
Swimming

MORRIS, ERIN—"Billy"

Birmingham, Ala.
Bannon
Phillips High, Birmingham, Ala.
Vice-President Honor Society; Literary Society; Dramatic Club; Art Club
Dancing, swimming

MOXON, FLORENCE—"Flo"

Willimantic, Conn.
Bosworth
Windham High

NEWMILLER, ELEANOR W.—"El," "E"

Montclair, N. J.
Montclair High School
Chairman Class Day Luncheon and Program Committee, Dramatic Club; Member Sub Council

OTTENGEIME, LILLIAN—"Lil"

Willimantic, Conn.
Windham High
Shields
Secretary of Class; Secretary and Treasurer of Glee Club; Editor School Paper

PAINE, MARIETTE—"Mayette," "May"

Danielson, Conn.
North
Killingly High School
Secretary Class (2)
Art, athletics

PETERSON, ELSIE—"Elsie"

Norwich, Conn.
Middletown, Conn.

PETROFSKY, RUTH ANNA—"Ruth"

Blackstone
Middletown High School
Outdoor sports

PLACE, RUTH E.—"Teddy"

Freeport, L. I.
Branford

PORTER, EDITH—"Ed"

The Gateway, New Haven
Treasurer Class; Stu. G. Chairman, President Debating Club

POTTER, JUDITH—"Judith"

New York City
Plant
Scoville School for Girls
Dancing

PRATT, EDWINA—"Ed"

Cleveland, Ohio
Massillon, Ohio
Thatcher
Rogers Hall, Lowell, Mass.
Secretary-Treasurer of Student Council

RANNEY, CATHERINE—"Kippy"

Broncho Busting!
Cleveland, Ohio
Plant
Hathaway-Brown School

RAPKIN, MARION—"Marion"

School President (4); Class President (3); Art Editor of School Paper; Vice-President Student Council
Sports

REASKE, GERTRUDE—"Gertrude"

Montclair, N. J.
Plant
Assistant Art Editor Year Book and Magazine
Music, books

REASKE, GERTRUDE—"Gertrude"

New York City
North
Wadleigh High, N. Y. C.
Publicity Agent of School Magazine

RAU, REBECCA—"Becky"

Winona, Minn.
Blackstone
Winona High School
Secretary of A. A.
Athletics

REED, FRANCES DU BOIS—"Frannie"

Denver, Colorado
Bannon
Dana Hall
Riding, reading, dancing

REILLY, ELIZABETH—"Liz"

Washington, D. C.
Madeira's School
President of Student Government; Captain Hockey Team; Secretary Class
Golf, horseback riding

REYNOLDS, HELEN—"Helen"

New York City
North
Wadleigh High
Art Editor Magazine
Tennis

RICHMOND, BARBARA—"Dunky"

Brockton, Mass.
North
Brockton High
Vice President Story Telling Club
Reading, bowling, sports

RICHMOND, JANE MORTON—"Jane"

Toledo
Brunswick, Me.
Brunswick High
Shields
Treasurer (3 years); Secretary and Treasurer of Dramatic Club; Chairman of Senior Prom

RILEY, ELIZABETH—"Bibbo"

All sports and dancing
Quantico, Va.
Branford
Western High School
President A. A.
Skating

ROEBER, HELEN—"Helen"

Newark, N. J.
Branford
South Side High
Hiking, swimming

ROEHM, DOROTHY—"Dory"

Winnetka, Ill.
Blackstone
New Trier High, Kenilworth, Ill.
Social Chairman French Club; Councilor of Stud. G.; Senior Paper Staff; Class Nominating Committee

ROGERS, JESSIE LOUISE—"Bobbie"

Waterford, Conn.
Chapman Technical High
Vice President Junior Class; Treasurer Class (2); President Class (4)
Music

ROSE, ELEANOR LOUISE—"Teddy"

Waterford, Conn.
Blackstone
Williams Memorial Institute
Tennis, horseback riding, swimming

ROTHWELL, PRISCILLA—"Pril," "Perry"

Boston, Mass.
Bosworth
Lee School, Boston
President Student Government; Captain Basketball; Chief Justice of Court
Sailing, tennis

ROYCE, NANCY—"Nancy"

Nutley, N. J.
Plant
Nutley High School
Associate Editor School Paper; Secretary Class (2); Budget Board; Manager Hockey Team
Horseback riding, dancing, hockey

RUBENSTEIN, JULIA—"Julie"

Hartford, Conn.
Thatcher
Hartford Public High
Valedictorian; Captain Basketball Team
Writing news, athletics, art, music

SAFFORD, ALICE ELIZABETH—"Alice"

Lowell, Mass.
Plant
Rogers Hall, Lowell
Member Student Council
Athletics

SARGENT, ELIZABETH MORSE—"Betty," "Betsy"

Bridgeport, Conn.
Plant
St. Mary's School
Tennis Manager; Magazine Board
Athletics, art, dancing

SCATTERGOOD, MARY MORRIS—"Seat"

Villa Nova, Pa.
Branford
Westtown School
Secretary Literary Society; Member Delta Honorary Society and Student Council
Swimming

SCUDDER, RUTH—"Scud"

Honolulu
Branford
Chevy Chase School, Washington, D. C.
Class President (2); Vice-President Class (3); President of A. A.; Captain of Golds
Swimming

SEILER, MIRIAM—"Miriam"

Lorain, Ohio
North
Lorain High School
Student Council; National Honor Society
Dancing, swimming

SERVICE, MARY ELLA—"Joe," "Walt"

Sharon, Pa.
President Senior Girls
Golf, dramatics, music

SEWARD, ELIZABETH—"Betty"

Sussex, N. J.
Bosworth
Sussex High School
President Class (1); Vice-President Literary Society

SHAW, MARIAN CHANDLER—"Marian"

Englewood, N. J.
Thatcher
The Lincoln School of Teacher's College, N. Y. C.
Art

SHEPPARD, MEREDITH—"Duffy"

Stafford Springs, Conn.
Shields
Stafford High School
Vice President Class; Chairman of Social Committee
Reading, dancing, singing

SIMONDS, MARIAN—"Si"

Pottsville, Penn.
Bannon
Lasell Seminary
Assistant Editor of Senior Year Book; Captain of H. Crew.
Sports, books

SIZKIN, GERTRUDE J.—"Trude"

New London, Conn.
Hartford Public High School
Editorial Board School Paper
Athletics, music

SLAYTER, MARY—"Mary"

Auburndale, Mass.
Newton High School
Exchange Editor of Paper; Member Student Council; Chairman Point System Committee
Dramatics, dancing

SMITH, HELEN—"Sonnie"

Cleveland, Ohio
Bosworth
Laurel School
Secretary and Treasurer of Class (4); Manager Basketball Team; Student Government Senator

SMITH, VIRGINIA STEWART—"Ginia"

Manchester, Vermont
Blackstone
Burr and Burton Seminary
Class Secretary (3); Chairman Social Committee Y. W. C. A.; Vice-President Class (3)

SODERMAN, ELLEN—"Nellie"

Brooklyn, N. Y.
Plant
Hiking

SPEAR, GLADYS—"Gene"

Shelton, Conn.
Shields
Shelton High
Football Banquet Committee; Class Ring Committee; Basketball Team
Beads

SPEIRS, ELIZABETH—"Zeke"

New London, Conn.
Williams Memorial Institute
President A. A.
All sports

STANTON, MARCIA—"Marcia"

Norwich, Conn.
Thatcher
Norwich Free Academy
Editor-in-Chief of Academy Journal
Reading, hiking

STEINWEDELL, ANN—"Ann"

Cleveland, Ohio
Plant
Dana Hall
Athletics, dancing

STONE, ESTHER—"Esther"

Southbury, Conn.
Bosworth
Woodbury High
Secretary of A. A.
Tennis

SULLIVAN, NATALIE JANE—"Nat"

Utica, N. Y.
Utica Country Day School
Class Treasurer; Captain of Basketball and Hockey Teams
All sports

TERRY, CAROLYN—"Terry"

Waterbury, Conn.
Branford
Saint Margaret's School
Swimming and tennis

THAYER, DOROTHY—"Dot"

Attleboro, Mass.
Bosworth
Attleboro High School
Art Editor Year Book
Swimming, riding

TILLINGHAST, FRANCES—"Frankie"

Danielson, Conn.
Bosworth
Killingly High School
Secretary Class (3)
Dramatics

UTLEY, ELIZABETH—"Elizabeth"

Waterford, Conn.
Williams Memorial Institute

VAINES, MARIAN—"Marian"

Middletown, Conn.
Bannon
Middletown High
Reading

VERNON, MARY DE COURCEY—"Babe," "Murray"

Washington, D. C.
Bannon
National Cathedral School
Secretary of College Club
Poetry, athletics

VOGEL, SHIRLEY ELVIRA—"Shirley"

Brooklyn, N. Y.
Branford
Adelphi Academy, Brooklyn
President of Spanish Club
Riding, swimming, dancing

WALSH, MARY—"Mary"

Newark, New Jersey
Plant
Craven's Prospect Hill School
Business Manager School Magazine; Chairman Fair Committee
Bridge, books, dancing

WELLS, FRANCES—"Fran," "Franny"

Upper Montclair, N. J.
Plant
Montclair High School
Chairman Waitress Committee—Class Day
Winter sports, handicraft

WHITE, MARY HARRIET—"Whitie"

Uniontown, Penn.
Shields
Dana Hall
Member Senior Honor Council

WHITEHEAD, MURIEL—"Muriel"

Newark, N. J.
Blackstone
Miss Craven's, Barringer High School
President Class—Cravens; Secretary of Dramatic Club; School Magazine Board; Chairman of Color, Ring and Pin Committee
Dancing, dramatics

WOODLEY, MARY LYNN—"Mary"

Shreveport, La.
Plant
Foster Hall, La.; Scoville, N. Y. C.
Captain Hockey, Basketball, Baseball Teams; President Class (2); Vice-President Class (3)

WRIGHT, THELMA EDITH—"Thelma"

Chester, Conn.
Branford
Chester High School
Secretary and Treasurer Class (2, 3)
Vice-President Athletic Ass'n; Member Student Government (1)
Reading, basketball

AT THE SIGN OF THE
SWAN AND HOOP
THE TEA ROOM
"Of the College, By the College,
For the College"
Helen Gage '20 Dorothy Marvin '20

THE SPORT SHOP
Plant Building
Smart Clothes for Women
CHARGE ACCOUNTS SOLICITED

**THE SAVINGS BANK
OF NEW LONDON**
Incorporated 1827
A BIG, STRONG, FRIENDLY BANK
Resources over \$19,000,000.00
Consult our Service Department
63 MAIN STREET

"The Store for Service"
Suits, Blouses, Dress Goods, Silks
Underwear, Hosiery and
Fancy Goods

THE S. A. GOLDSMITH CO.
THE BEE HIVE
131-143 State Street, New London

PERRY & STONE, Inc.
JEWELERS AND OPTICIANS
Fine Leather Goods
Mark Cross Gloves
Fountain Pens—Writing Paper
138 State Street NEW LONDON

Get It At
STARR BROS., Inc.
DRUGGISTS
LUNCHES
—AND—
ICE CREAM
110 STATE STREET

Compliments
of
Mohican Hotel

MISS FLORENCE CANFIELD
Distinctive Millinery
Plant Building, New London, Conn.
Telephone

STUDENT GOVERNMENT

With the beginning of any new year are always associated resolutions. Many are made but few are kept. What a different world this would be if only our ambitions came up to the best of some of these good intentions! It is a deplorable fact that often a good idea gets no further from the mind than the mere thinking of it. It is the putting into practice of our good ideas and the development of them which make them worthy to the to the cause of mankind.

We are now opening a new year at college. It is as new and as good a beginning to us as New Year's Day is to the year it is sponsoring. Now is the time for resolutions. And as good resolutions are indicative of the best of intentions, we must include among them those things which are for the advancement and betterment of our college.

Student government in C. C. is a most important and fundamental factor in our college life. It may technically come under the name of an association, but it is essentially a responsibility—a responsibility which is to be shouldered by each and every per-

Continued on page 4, column 2.



BACK LOG CAMP, INDIAN LAKE, N. Y.

An early summer outing, right after college closes for groups of college girls, their families and friends.

A real camp, with fifty tents and a fire for each.

A fleet of boats carry you miles through a wilderness of lake and stream. Trails lead you to the upland haunts of deer.

A family long versed in wood lore guide you on trips for the day or night.

SARAH CARSLAKE
1926 Connecticut College Representative
MOSIER HOUSE

Don't Wear Borrowed Plumage!

BUY YOURS AT

The Fine Feather
111 Huntington St., New London

**CONNECTICUT MOTOR
TRANSPORTATION CO.**
MOTOR STAGE LINE
operating between
Hartford—New London—Norwich

The Specialty Shop
MANWARING BLDG.
Hosiery, Underwear
Waists, Neckwear, Corsets
THE COLLEGE GIRLS' MECCA

MISS LORETTA FRAY
REPRESENTING THE
M. M. HARPER METHOD OF
SHAMPOOING, SCALP TREATMENT
FACIAL and MANICURING
Room 214, Plant Building
Telephone 322 New London, Conn.

SERVICE LEAGUE WELCOMES '29 TO COLLEGE

RECEPTION GREET'S FRESHMEN

The annual Service League Reception to the Freshmen took place in the gymnasium on Wednesday night, September 23, marking the close of the first day of the academic life of the college as it is entering upon its eleventh year.

In the receiving line were President and Mrs. Marshall, Dean Benedict, Helen Farnsworth, President of Service League, Theodosia Hewlett, President of Student Government, Emily Warner, Graduate Secretary, Helen Hood, President of Senior Class, Florence Hopper, President Junior Class, and Adelaide King, President of Sophomore Class.

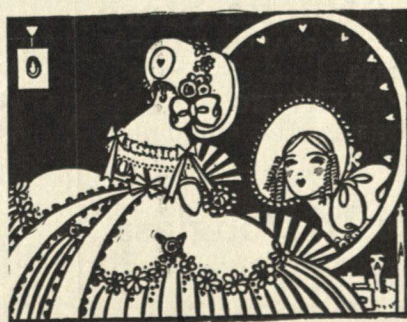
After this the presidents of the various college organizations and clubs spoke briefly of the purpose of their respective organizations. They extended an invitation to the Freshmen to join wherever their interests might direct. It was urged that the different groups needed the support of the Freshmen class, and that though the names might in some cases appear to be forbidding, they are not in truth that.

The floor was then cleared and dancing began. Refreshments were served, and everyone was busily engaged in making the acquaintance of all the new comers to the college. To aid in doing this everyone wore her name as a badge of identification, according to the custom of former years.

Toward the close of the evening the Juniors gathered together to sing their first song to their sister class. A few minutes after everyone had returned to her dormitory, the Seniors serenaded '29 as a token of their welcome.

Compliments of the

Walkover Shoe Store



The Smartest Women of London, Paris and New York use these four preparations created by ELIZABETH ARDEN: Venetian Cleansing Cream, Venetian Ardena Skin Tonic, Venetian Velve Cream, Venetian Special Astringent. For sale at

THE FINE FEATHER
11 Huntington St. New London

Luncheon, Afternoon Tea
and Flowers
—at—
BROOKS'
34 MAIN STREET

The National Bank of Commerce of New London

Capital Stock, \$300,000
Surplus and Profits, \$475,000

STATE STREET
NEW LONDON, CONN.



The charm of the new mode is best expressed in

Corticelli
DRESS SILKS

Ask your dealer to show you the latest weaves and colorings.

Ideal for Daytime and Evening Frocks

ALL KINDS OF
**WOMEN'S
FURNISHINGS**
VISIT THE
James Hislop & Co.
153-163 State Street

THE STYLE SHOP

17 BANK ST.
Home of
CO-ED DRESSES
and Kenyon Tailored Coats and Suits

Marcel Waving Shampooing

Marinello Facials Hair Tinting

Mary Elizabeth Beauty Salon
Marinello System
MARY E. WALKER
Patterson Bldg.—Phone 4047
76 State Street, New London, Conn.

COMPLIMENTS OF
ISAAC C. BISHOP
PHOTOGRAPHER
Phone 403 Manwaring Bldg.

NEW LONDON'S
LEADING THEATRES
CAPITOL
Keith Supreme Vaudeville
CROWN
Photoplays De Luxe
LYCEUM
Legitimate Attractions

J. SOLOMON
Stationery, Diaries and
Loose Leaf Books
30 MAIN STREET

CALENDAR.

Oct. 3, Saturday—Junior-Freshman Party, in Gymnasium.

Oct. 4, Sunday—President and Mrs. Marshall at home to Freshmen.

Oct. 4, Sunday—Vespers.

Oct. 5, Monday—Faculty meeting at seven o'clock, New London Hall.

FRESHMEN.

Tryouts for positions on the *News* begin soon. There are vacancies for your class on the Editorial, Managing and Business Staffs. Are you interested?

Watch the Bulletin Board.

The Colonial Shoppe

305 State Street, New London
RESTAURANT, GRILL, SODA
CANDIES

PASTRY, NOVELTIES

Afternoon Tea
Served from 3 to 5 p. m.

Catering to Banquets, Receptions
Weddings, Etc.

The Garde Catering Co.

Wire Us and We'll Wire For You
Largest Radio Store for Parts and Sets
Tell Us Your Radio Troubles

T. J. EALAHAN

Fixtures, Supplies and Appliances
Electrical Contractor
Estimates Cheerfully Given
51 Main Street, New London, Conn.
Phone Connection

COMPLIMENTS OF

B. M. BALINE

IMPORTER AND MAKER OF

Fine Furs

33 MAIN ST., NEW LONDON, CONN.

Telephone 1523

STUDENT GOVERNMENT.

Concluded from page 3, column 2.

son who has the privilege of being a member.

It almost seems to be a habit in this country (by way of illustration use the results of the Prohibition Act) to break law and order, probably because it is so easy to do. It is instinct which leads us to follow the impulses of the mob, and thus it is human nature to follow the paths of least resistance. But why not rise above that level of merely obeying our instincts and progress beyond the pale of ordinary mob behavior?

In order to control perfectly any organization there must be complete and sympathetic co-operation with the governing body. The least flaw in a machine spoils the mechanism and renders it useless. In just such a way the breaking of rules so demoralizes the machinery of Student Government that it is impossible to conduct with any amount of smoothness its duties and pleasures.

It follows clearly then that in order to get the most out of anything, the best must be put into it. This means nothing more than that our resolutions, such as loyalty and co-operation to the welfare of Student Government must be put into practice immediately.

Let us rise to the occasion and prove ourselves capable of sustaining those qualities which will be for the promotion and furtherance of Student Government.

When You Say it With Flowers
Why Not Try Ours?

Deliveries to College Promptly
Flowers For All Occasions

FELLMAN, THE FLORIST

Crocker House Block
Flower 'phone 2272-2

GIFT SHOP? YES!

at the

HUGUENOT

Brass Candlesticks—Wonderful Values
All Kinds of Gifts—Come and See
Chicken, Waffles and Coffee
Telephone 2847

The Athletic Store

Agent for A. G. SPALDING & BRO.

TENNIS GOLF
SKATING
CROWN THEATRE BUILDING

Alice L. Douglass

Creator of Distinctive Millinery

Mohican Hotel Building
NEW LONDON, CONNECTICUT

Mrs. R. N. Clark's Parlors

Manicuring, Shampooing
and Hair Goods

Telephone 2060

15-17 Union St., New London, Conn.

ZEPP'S BAKERY and PASTRY SHOP

THE HOME OF EVERYTHING
GOOD THAT'S BAKED

Telephone 1594

25 Main Street, New London, Conn.

TENNIS RACKETS GOLF CLUBS
TENNIS SHOES GOLF BAGS

We do our own Re-stringing Rackets
Prompt Service

Alling Rubber Co.

158 State Street

LYON & EWALD

Tennis, Golf and
Sporting Goods

Flashlights, Hardware and
House Furnishing Goods

88 STATE STREET

The Mariners Savings Bank

New London, Conn.

STATE STREET

Next to Post Office

"The Bank of Cheerful
Service"

The Perfect Graduation Gift

BOOKS ETCHINGS

WIDE SELECTION AT

The Book Shop, Inc.

56 MAIN STREET

STRAUSS & MACOMBER

WATCHES, DIAMONDS
and JEWELRY

123 State Street, New London, Conn.
Fine Watches Repaired and Adjusted

SMACKING GOOD
HOT CHOCOLATE FUDGE SUNDAE
TOPPED WITH CREAM, 20c

THE COLLEGE PHARMACY

393 WILLIAMS STREET

"At the Foot of the Hill"

COMPLIMENTS OF

Edward S. Doton

DISTRICT MANAGER

THE MUTUAL LIFE
INSURANCE COMPANY

of New York

PLANT BUILDING, New London, Conn.

The Largest and Most Up-to-Date
Establishment in New London

Crocker House Barber Shop

JOHN O. ENO, Proprietor

LADIES' HAIR DRESSING

EXPERT MANICURIST, CHIROPODIST

The Quality Drug House of Eastern Connecticut

The NICHOLS & HARRIS CO.

ESTABLISHED 1850

High Grade Candies and Toilet Articles

119 STATE STREET



CONFECTIONER
AND
CATERER

COLLEGE STYLE SPORT HATS
SLICKERS, SWEATERS

Fur Coats, Scarfs, Corticelli Hose

Tate and Neilan

HATS, FURS, FURNISHINGS
Corner State and Green Streets



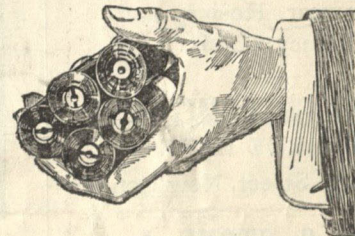
PARTY FLOWERS

and CORSES at

FISHER'S

104 STATE STREET
Flower Phone 58-2

Plants and Flower Gifts by
Wire



CHIDSEY'S

115 STATE STREET

TURNER'S FLOWER SHOP

CONNECTICUT COLLEGE FLORIST

75 Main St.—Phone 2604

Burr Block, Montauk Ave.—Phone 385

QUALITY AND REASONABLE
PRICES OUR MOTTO

BRATERS'

102 MAIN STREET

Pictures, Picture Framing

Greeting Cards, Art Material

COAL

Phone

243

Established
Nov. 6, 1865



LUMBER

Phone

242

286 Bank St.
NEW LONDON,

The Union Bank and Trust Company

OF NEW LONDON, CONN.

Incorporated 1792