

Connecticut College

Digital Commons @ Connecticut College

Historic Sheet Music Collection

Greer Music Library

1868

Dreams of the Sea Shore

Edward A. Niven

W. E. Chandler

Follow this and additional works at: <https://digitalcommons.conncoll.edu/sheetmusic>



Part of the [Music Commons](#)

Recommended Citation

Niven, Edward A. and Chandler, W. E., "Dreams of the Sea Shore" (1868). *Historic Sheet Music Collection*. 59.

<https://digitalcommons.conncoll.edu/sheetmusic/59>

This Score is brought to you for free and open access by the Greer Music Library at Digital Commons @ Connecticut College. It has been accepted for inclusion in Historic Sheet Music Collection by an authorized administrator of Digital Commons @ Connecticut College. For more information, please contact bpancier@conncoll.edu.

The views expressed in this paper are solely those of the author.

reams of the sea shore

Written by

Edward A. Niven

Music by

W. E. CHANDLER.



BOSTON

*G. D. Russell & Company 126 Tremont
Opp. Park St.*

J. H. Keith & Co. St. Louis.

E. W. Billings Providence.

Entered according to act of Congress 10 1862 by G. D. Russell & Co. in the Clerk's office of the Dis. Court of Mass



DREAMS OF THE SEA SHORE.

W. E. CHANDLER.

The piano introduction consists of two staves. The right hand plays a melody in 4/4 time, starting with a half note G4, followed by quarter notes A4, B4, and C5, then a half note D5. The left hand plays a bass line with chords, starting with a half note G2, followed by quarter notes A2, B2, and C3, then a half note D3. The key signature is three flats (B-flat, E-flat, A-flat).

'Tis ma - ny many years a - go. Since we, love, roand to geth - er, And
 'Twas there that first we met my love, The time I well re - mem - ber, When
 The mem' - ry of those happy days Is bright with re - gal splen - dor, And

The vocal line continues the melody from the piano introduction. The piano accompaniment provides harmonic support with chords and a steady bass line. The lyrics are written below the vocal staff.

1 fa - ces that we used to see, Are hidden now for - ev - er; But
 2 all the earth was sleeping, in The sweetness of Sep - tem - ber; 'Twas
 3 fills my heart with sweetest dreams, So truthful and so ten - der; And

The vocal line continues the melody. The piano accompaniment provides harmonic support. The lyrics are written below the vocal staff.

all the haunts we lov'd so well, When we were young and free, In
 there a princely si - ne - cure, Was giv - en un - to me, The
 oft I sigh in summer hours To be a - gain with thee, A -

qui - et beauty still re - main Down by the sounding sea.
 vir - gin love of mai - den dear— Down by the sounding sea.
 - mong the haunts we lov'd so well, Down by the sounding sea.

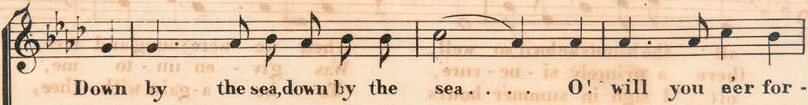
* Down by thesea, down by the sea, . . . O! will you e'er for - get The

hap - py hours we've pass'd my love, Down by the sounding sea?

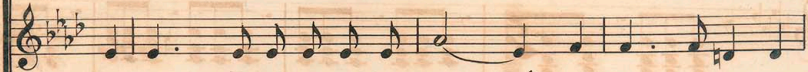
* When the chorus is sung, this may be omitted after the first verse.

CHORUS.

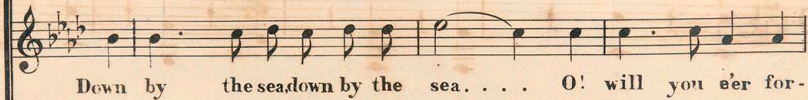
Soprano.



Alto.



Tenor.



Bass.



Piano.



- get The hap - py hours we've spent, my love, Down by the sounding sea?

- get The hap - py hours we've spent, my love, Down by the sounding sea?