

1920

A Boat Song

Mary L. Ritter

Mary Turner Salter

Follow this and additional works at: <https://digitalcommons.conncoll.edu/sheetmusic>

Recommended Citation

Ritter, Mary L. and Salter, Mary Turner, "A Boat Song" (1920). *Historic Sheet Music Collection*. 161.
<https://digitalcommons.conncoll.edu/sheetmusic/161>

This Score is brought to you for free and open access by the Greer Music Library at Digital Commons @ Connecticut College. It has been accepted for inclusion in Historic Sheet Music Collection by an authorized administrator of Digital Commons @ Connecticut College. For more information, please contact bpancier@conncoll.edu.

The views expressed in this paper are solely those of the author.



A Boat Song

The verse by
Mary L. Ritter

The music by
Mary Turner Salter

price 60 cents

HIGH VOICE

LOW VOICE

The John Church Company
CINCINNATI • NEW YORK • LONDON

The House Devoted to the
Progress of American
Music

A Boat Song

Words by
MARY L. RITTER

Music by
MARY TURNER SALTER

Allegro ma non troppo

mp

VOICE

Allegro ma non troppo

The

PIANO

mf

sun - set light is on — the sail, The

p

wa - ter all a - glow. And

on the bil - low up and down The

boat rocks to and fro

cresc. *f*
Birds float up - ward to the sky, Oh, how I

p *cresc.*

Red.

ten.
long for wings to fly. The

ten. *Red.*

boat has wings, the bird has wings, But

none re - main for me, Save.

wings of kind and lov - ing thought, And

Ped. *simile.*

wings of mem - o - ry.

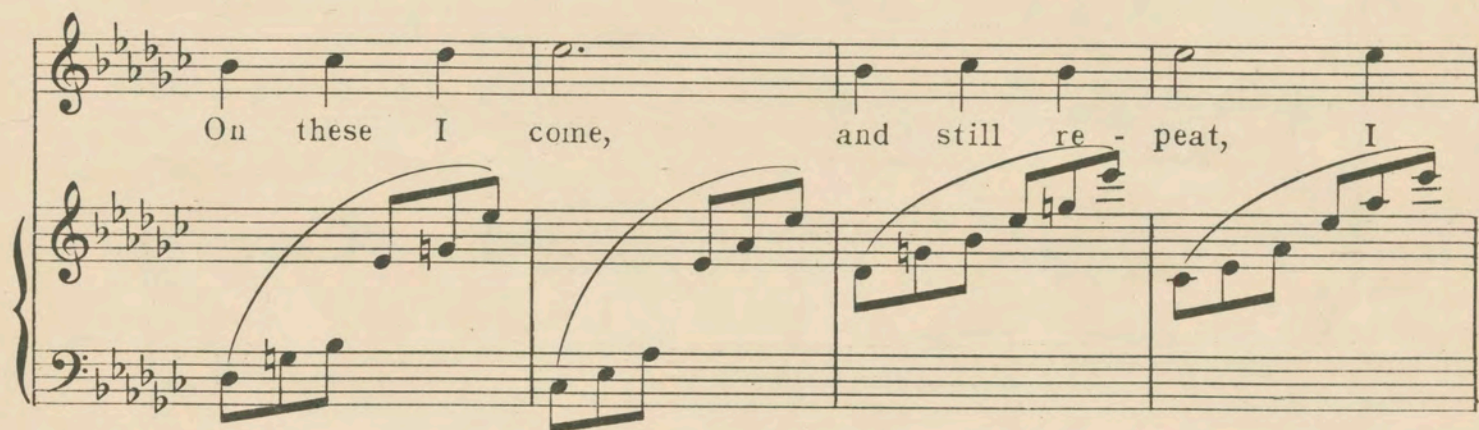
Ped. *Ped.*



On these I come, and still re - peat,

And.

This system contains the first four measures of the piece. The vocal line is in treble clef with a key signature of three flats (B-flat, E-flat, A-flat). The piano accompaniment is in grand staff (treble and bass clefs) with the same key signature. The lyrics 'On these I come, and still re - peat,' are written below the vocal line. A 'Ped.' (pedal) marking is placed below the first measure of the piano accompaniment.



On these I come, and still re - peat, I

This system contains measures 5 through 8. The vocal line continues with the lyrics 'On these I come, and still re - peat, I'. The piano accompaniment continues with arpeggiated figures. The key signature remains three flats.



love, I love you, I love

This system contains measures 9 through 12. The vocal line continues with the lyrics 'love, I love you, I love'. The piano accompaniment features more complex arpeggiated patterns. The key signature remains three flats.



you, sweet.

This system contains measures 13 through 16, ending the piece. The vocal line concludes with the lyrics 'you, sweet.'. The piano accompaniment ends with a final chord. The key signature remains three flats.



High Voice

Slumber Sea



Low Voice

MARY TURNER SALTER

Andantino

VOICE

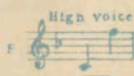
The riv-er I sail is nam-ed Sleep, And

Andantino

PIANO

p

Sleep is the name of my boat, _____ We have nei-ther



High Voice

Mother Moon



Low Voice

AMELIA JOSEPHINE BURR

MARY TURNER SALTER

p

The

poco rall.

a tempo

moon - light is shin - ing So white thro' my win - dow, The

p a tempo

Copyright MCMXIX by The John Church Co.
International Copyrights