

1864

Bury Me in the Sunshine

Joseph W. Turner

Follow this and additional works at: <https://digitalcommons.conncoll.edu/sheetmusic>

Recommended Citation

Turner, Joseph W., "Bury Me in the Sunshine" (1864). *Historic Sheet Music Collection*. 170.
<https://digitalcommons.conncoll.edu/sheetmusic/170>

This Score is brought to you for free and open access by the Greer Music Library at Digital Commons @ Connecticut College. It has been accepted for inclusion in Historic Sheet Music Collection by an authorized administrator of Digital Commons @ Connecticut College. For more information, please contact bpancier@conncoll.edu.

The views expressed in this paper are solely those of the author.

Bury me in the sunshine

LAST WORDS OF

ARCHBISHOP HUGHES,

POETRY & MUSIC BY

J. W. TURNER.



BOSTON.

Published by Oliver Ditson & Co. 277 Washington St.

Cin.
J. Church Jr.

N. York.
W. A. Pond & Co.

Boston.
J. C. Haynes & Co.

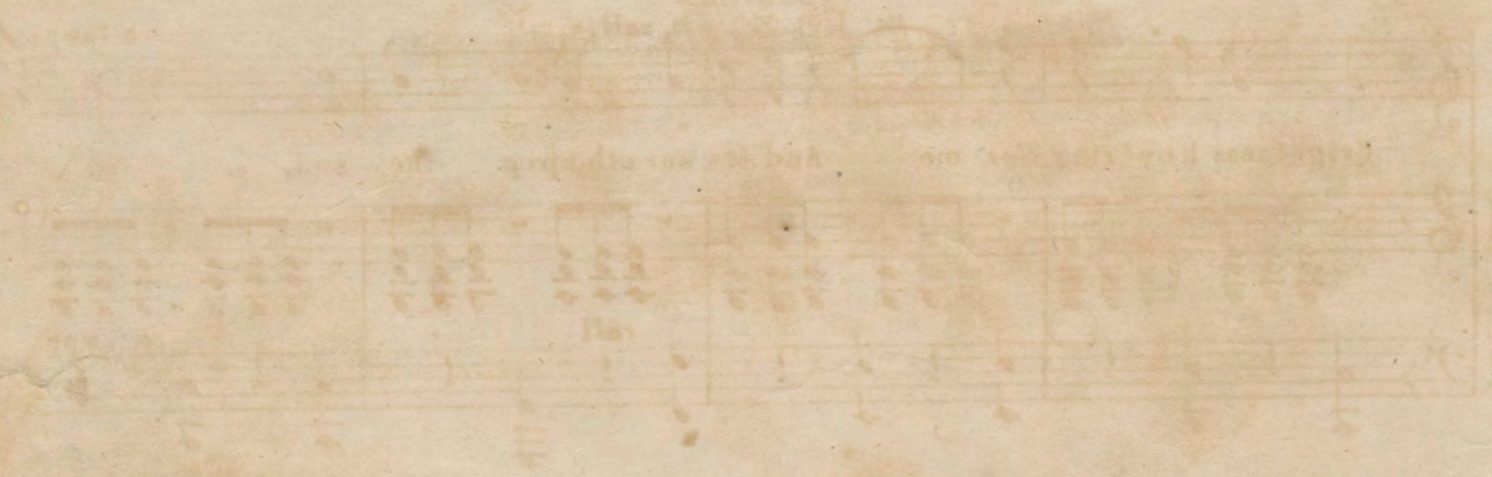
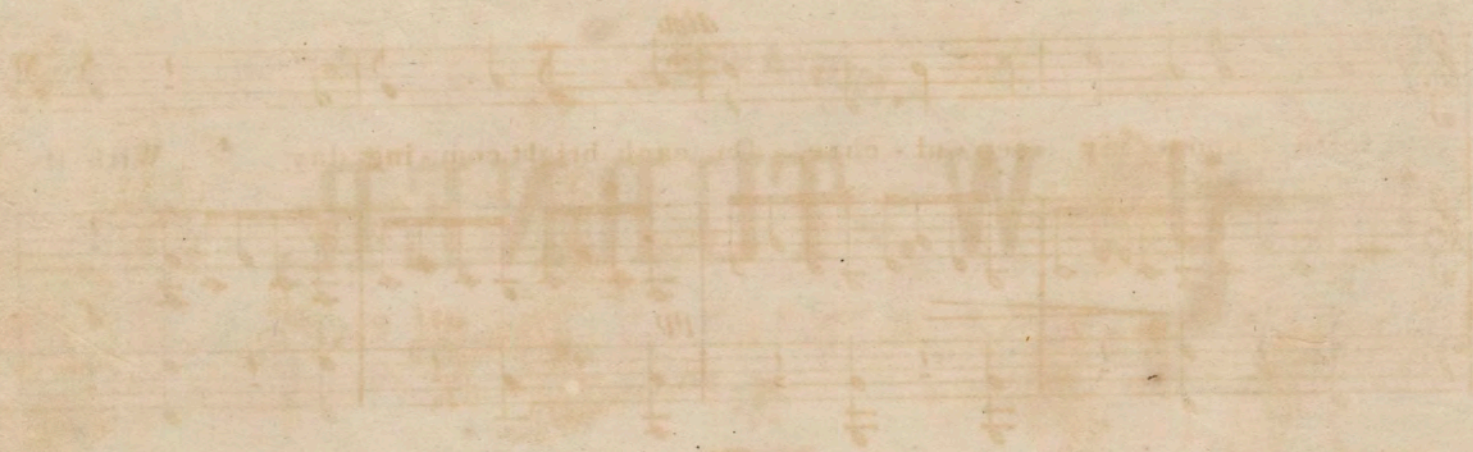
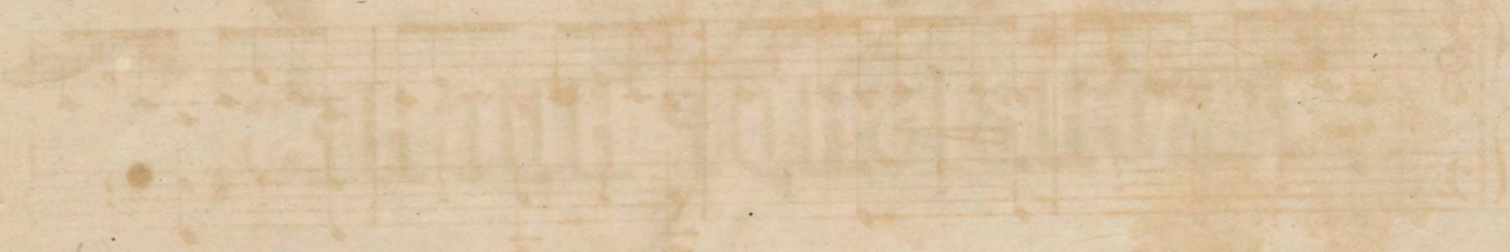
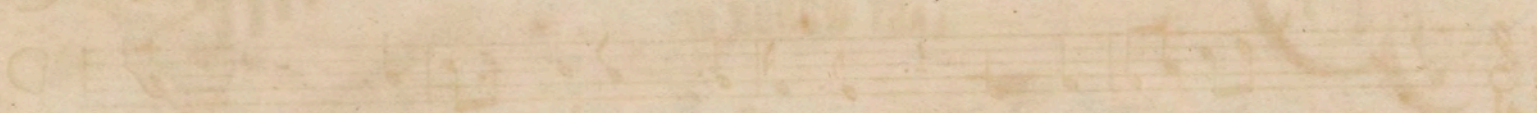
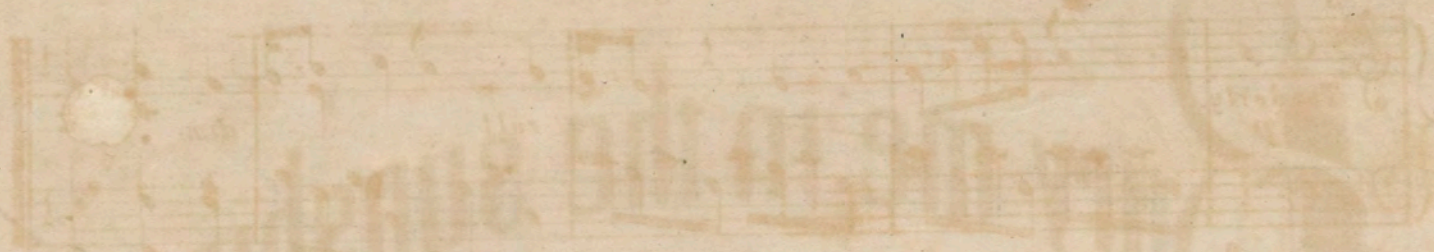
Phila
J. E. Gould.

Entered according to act of Congress 10 1864 by O. Ditson & Co. in the Clerk's office of the Dist. Court of Mass.

"BOBBY ME IN THE SUNSHINE"

L. W. TAYLOR

2. Tenor & Bass



"BURY ME IN THE SUNSHINE."

J. W. TURNER.

Andante e legato.

Tenderly.
p

rall *dim.*

The piano introduction consists of two staves. The right hand plays a melody of eighth and sixteenth notes, while the left hand plays a steady eighth-note accompaniment. The tempo is marked 'Andante e legato' and the mood is 'Tenderly'. The piece begins with a piano (*p*) dynamic and includes markings for 'rall' and 'dim.'.

"Bury me in the sunshine," Let its warm and gen-tle ray Shine.

p

The first system of the song features a vocal line and a piano accompaniment. The vocal line begins with the lyrics "Bury me in the sunshine," and the piano accompaniment provides a harmonic foundation with chords and moving lines in both hands. The piano part starts with a piano (*p*) dynamic.

dim.

forth upon my sep-ul-chre, On each bright com-ing day; With its

pp *f*

The second system continues the song. The vocal line includes the lyrics "forth upon my sep-ul-chre, On each bright com-ing day; With its". The piano accompaniment features a crescendo leading to a fortissimo (*f*) dynamic, with a pianissimo (*pp*) marking at the beginning of the system.

rall. *a tempo.*

brightness hov'ring o'er me And its warmth upon the sod, So

rall *a tempo.*

The third system concludes the song. The vocal line includes the lyrics "brightness hov'ring o'er me And its warmth upon the sod, So". The piano accompaniment features a final section with a 'rall' marking and a return to 'a tempo'.

peaceful I shall slumber, While my soul returns to God. So

peaceful I shall slumber, While my soul returns to God. *p*

"Bury me in the sunshine," 'Tis a christian's last re - quest, With the. *p*

Dim.

sweet flow'rs blooming round me, And the ver-dure on my breast. Thus,

pp *f*

Rall. *A tempo.*

I would be re-pos-ing, Not in the darksome night, But

Rall. *tempo.*

where the day's immortal orb Sheds its celes-tial light. But

D.S. S.

where the days immortal orb Sheds its celes-tial light. *S.*

RECORDED & INDEXED

My Town and Country

Some Chorus

WRITTEN BY

MRS. J. WEBB

Copyright 1870

Henry Tucker

WEARING SAG AND MONKEY & CALL ME NOT BACK FROM THE CHORUS SHEET

BOSTON

Henry Tucker & Co. Publishers

100 NASSAU ST. N.Y.

1870