

Connecticut College

Digital Commons @ Connecticut College

Historic Sheet Music Collection

Greer Music Library

1835

Queen Mary's Escape from Lochleven Castle

Queen Mary's escape from Lochleven Castle

Follow this and additional works at: <https://digitalcommons.conncoll.edu/sheetmusic>

Recommended Citation

Queen Mary's escape from Lochleven Castle, "Queen Mary's Escape from Lochleven Castle" (1835).
Historic Sheet Music Collection. 237.

<https://digitalcommons.conncoll.edu/sheetmusic/237>

This Score is brought to you for free and open access by the Greer Music Library at Digital Commons @ Connecticut College. It has been accepted for inclusion in Historic Sheet Music Collection by an authorized administrator of Digital Commons @ Connecticut College. For more information, please contact bpancier@conncoll.edu.

The views expressed in this paper are solely those of the author.

Queen Mary's Escape from Lochleven Castle.

A Favorite Song

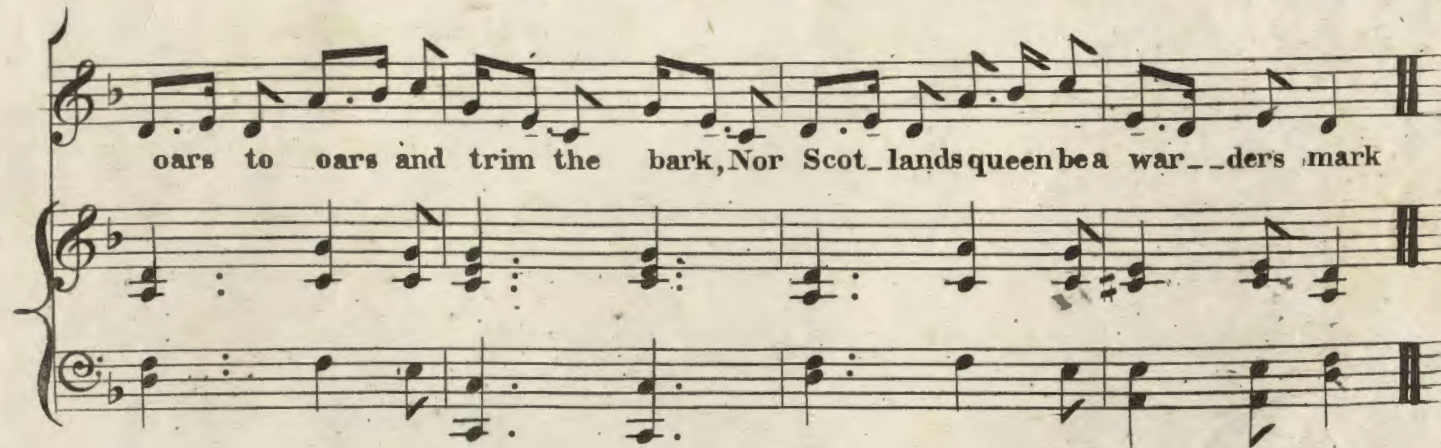
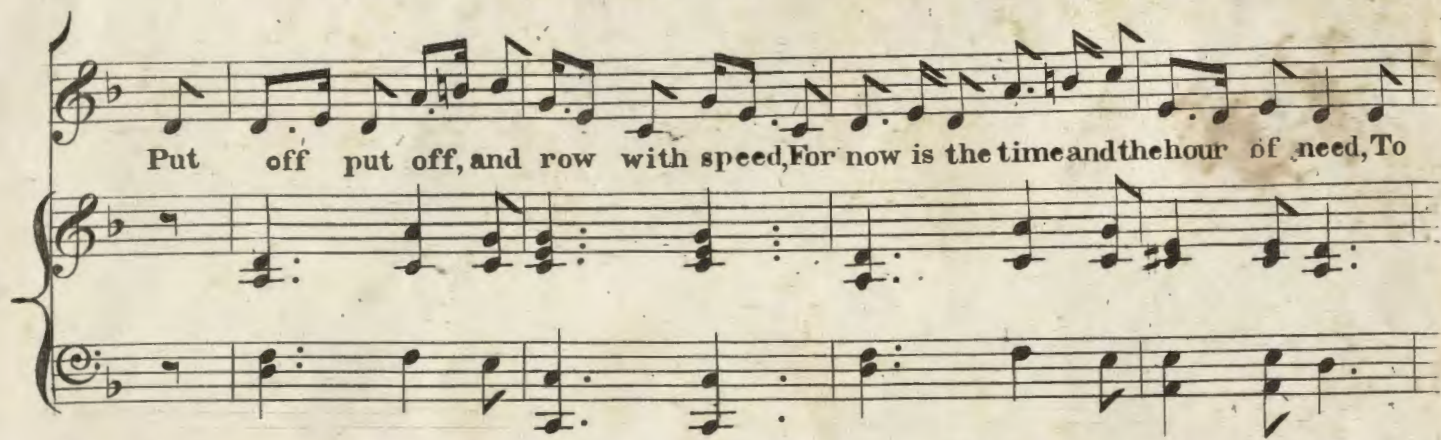
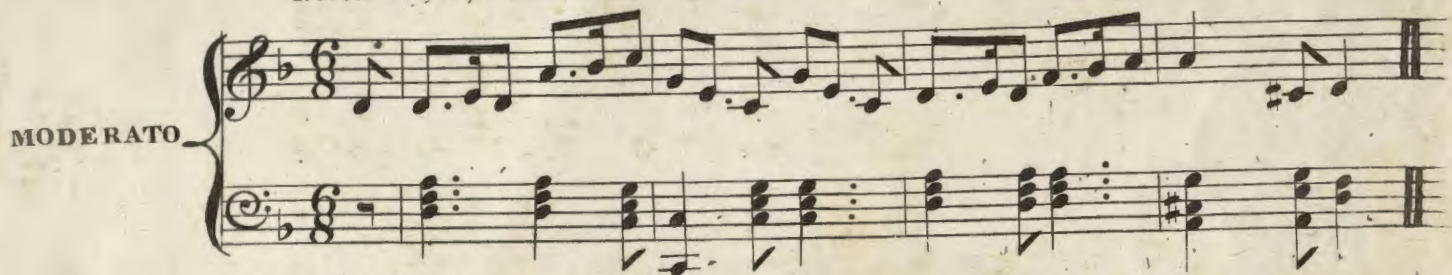
With accompaniments

for the

Piano Forte.

NEW YORK, Published by JAMES L. HEWITT 239 Broadway.

MODERATO



255

You light that plays ^{round} the Cas_tles moat is on ly the war_ders ran_dom shot Put

off put off and row with speed for now is the time and the hour of need

2

Those ponderous keys shall the kelpies keep,
 And lodge in their caverns so dark and deep,
 Nor shall Lochlevns tower or hall,
 Hold thee our lovely lady in thrall;
 Or be the haunts of traitors sold,
 While Scotland has hands and hearts so bold,
 Then onward steersman row with speed,
 For now is the time and the hour of need.

3

Hark! the alarum bell has rung,
 The warder's voice has treason sung
 The echos to the falconets roar,
 Chime sweetly to the dashing oar,
 Let tower and hall and battlement gleam,
 We steer by the light of the tapers beam
 For Scotland and Mary, on, with speed,
 Now now is the time and the hour of ^{need}

