

Connecticut College

Digital Commons @ Connecticut College

Historic Sheet Music Collection

Greer Music Library

1922

Crinoline Days

Irving Berlin

Follow this and additional works at: <https://digitalcommons.conncoll.edu/sheetmusic>

Recommended Citation

Berlin, Irving, "Crinoline Days" (1922). *Historic Sheet Music Collection*. 242.
<https://digitalcommons.conncoll.edu/sheetmusic/242>

This Score is brought to you for free and open access by the Greer Music Library at Digital Commons @ Connecticut College. It has been accepted for inclusion in Historic Sheet Music Collection by an authorized administrator of Digital Commons @ Connecticut College. For more information, please contact bpancier@conncoll.edu.

The views expressed in this paper are solely those of the author.

CRINOLINE DAYS

2.00
C

SAM H. HARRIS *presents*


IRVING BERLIN'S

Second Annual

MUSIC BOX REVUE

1922-23

WORDS and MUSIC BY
IRVING BERLIN



LADY OF THE EVENING	.60
PACK UP YOUR SINS AND GO TO THE DEVIL	.60
CRINOLINE DAYS	.60
PORCELAIN MAID	.60
WILL SHE COME FROM THE EAST? (EAST-NORTH-WEST OR SOUTH)	.60
MONT MARTRE	.60
THE LITTLE RED LACQUER CAGE	.60
BRING ON THE PEPPER	.60
DIAMOND HORSESHOE	.60
THREE CHEERS FOR THE RED, WHITE AND BLUE	.60
I'M LOOKING FOR A DADDY LONG LEGS	.60
TAKE A LITTLE WIFE	.60
SELECTION	1.00

Staged by HASSARD SHORT

Irving Berlin Inc.
MUSIC PUBLISHERS
1607 Broadway New York

PRINTED IN U.S.A.

Crinoline Days

By IRVING BERLIN

f *cresc.*

f *L.H.* *p*

Vamp Back to the old - en

Days that were gold - en Mem - o - ry oft - en strays. Be -

Arranged by
Chas. N. Grant

Copyright MCMXXII by Irving Berlin Inc. 1607 Broadway, New York
International Copyright Secured

All Rights Reserved

fore an - y - one could gaze ——— At Mol - ly's and May's lit - tle

This system contains the first three measures of the song. The vocal line begins with a half note 'fore', followed by a quarter note 'an', a quarter note 'y', a quarter note 'one', a half note 'could', a half note 'gaze' with a long dash, a quarter note 'At', a quarter note 'Mol', a quarter note 'ly's', a quarter note 'and', a quarter note 'May's', a quarter note 'lit', and a half note 'tle'. The piano accompaniment features a steady eighth-note bass line and a treble line with chords and moving lines.

ank - le dis - plays. Time with its chang - es Of - ten ar - rang - es

rall. *a tempo*

rall. *a tempo*

This system contains measures 4 through 7. Measure 4 starts with a 'rall.' marking and a fermata over the note 'ank'. Measures 5 and 6 are marked 'a tempo'. Measure 7 has a 'rall.' marking and a fermata over the note 'dis'. The piano accompaniment continues with a consistent harmonic support, including a 'rall.' marking in measure 5 and a 'p.' (piano) dynamic marking in measure 6.

Styles that be - come the craze. But I am yearn - ing

This system contains measures 8 through 10. The vocal line has a half note 'Styles', a half note 'that', a half note 'be', a half note 'come', a half note 'the', a half note 'craze.', a quarter rest, a quarter note 'But', a quarter note 'I', a quarter note 'am', a quarter note 'yearn', and a half note 'ing'. The piano accompaniment features a steady eighth-note bass line and a treble line with chords and moving lines.

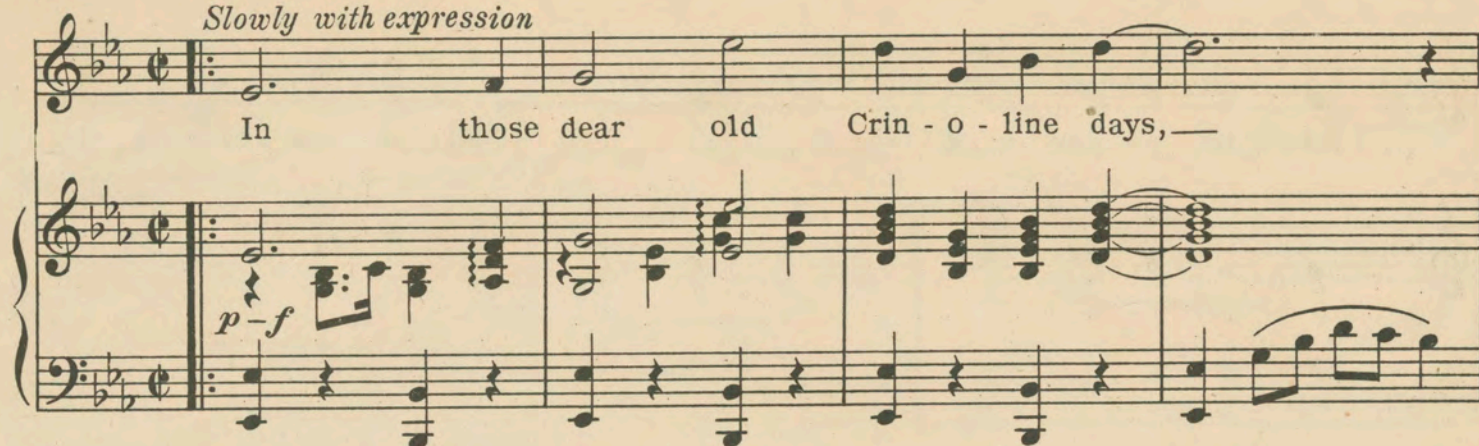
To be re - turn - ing Back to those crin - o - line days.

This system contains measures 11 through 13. The vocal line has a half note 'To', a half note 'be', a half note 're', a half note 'turn', a half note 'ing', a half note 'Back', a half note 'to', a half note 'those', a half note 'crin', a half note 'o', a half note 'line', and a half note 'days.'. The piano accompaniment continues with a consistent harmonic support, including a 'p.' (piano) dynamic marking in measure 11 and a 'p.' (piano) dynamic marking in measure 12.

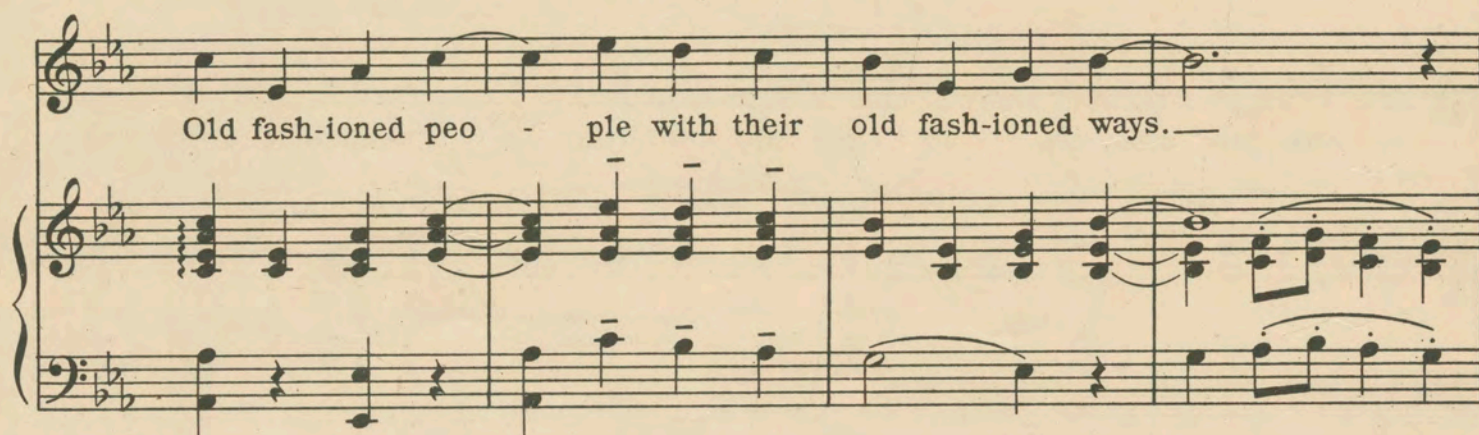
CHORUS

Slowly with expression

In those dear old Crin - o - line days, —



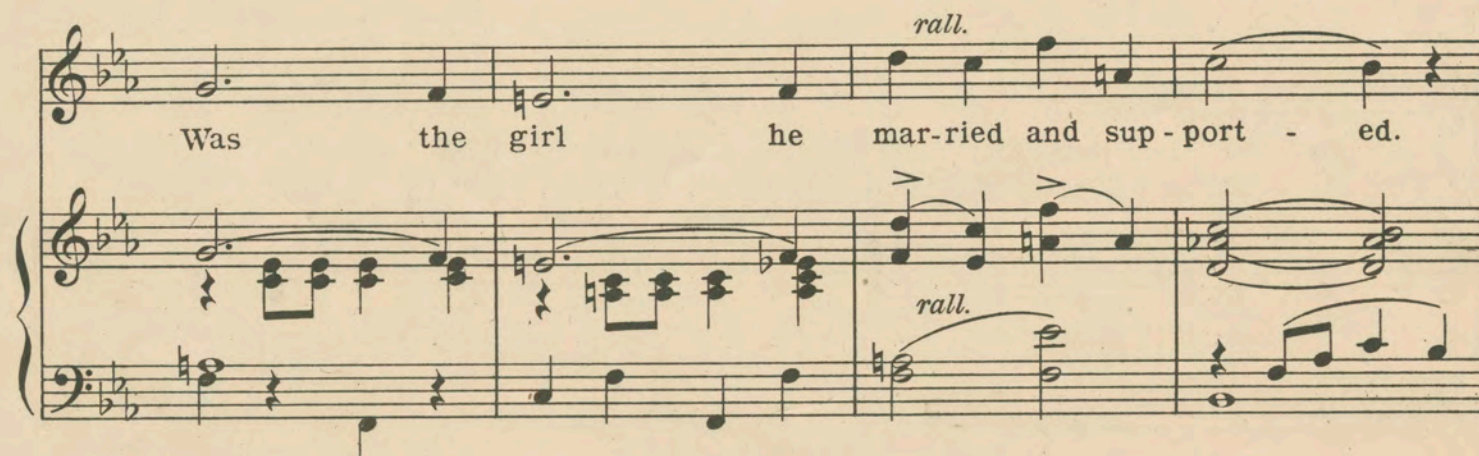
Old fash-ioned peo - ple with their old fash-ioned ways. —



When the girl a fel - low court - ed



Was the girl he mar-ried and sup-port - ed.



Back in eigh - teen - sev - en - ty - four —

Ro-sy com-plex - ions were-n't bought in a store; — Gran - ny and

grand - dad-dy long-ing - ly gaze — Back to those Crin - o - line

1. days. 2. days. —

mf L.H. *schierzando* *fp* *mf* L.H. *dim. e rall.* *p*



SONG GEMS

FROM

IRVING BERLIN'S

SECOND ANNUAL

MUSIC BOX REVUE

CHORUS Lady Of The Evening

Slowly with expression



Eve - ning La - dy of the eve - ning,

Pack Up Your Sins And Go To The Devil

CHORUS

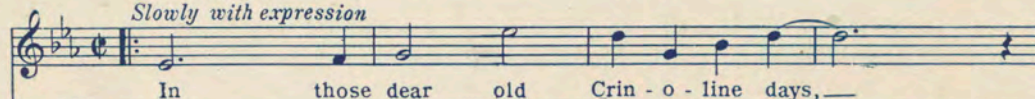


Pack up your sins and go to the dev-il in had - es You'll meet the

Crinoline Days

CHORUS

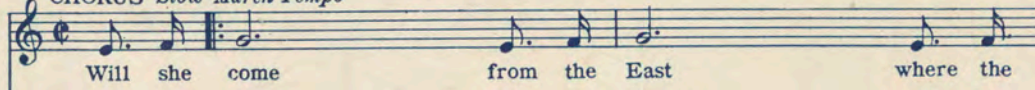
Slowly with expression



In those dear old Crin - o - line days,

Will She Come From The East?

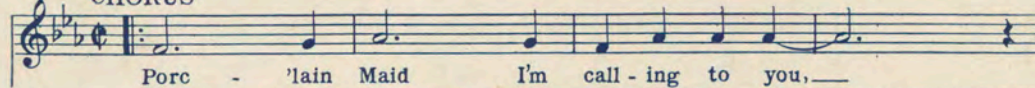
CHORUS *Slow March Tempo*



Will she come from the East where the

Porcelain Maid

CHORUS



Porc - 'lain Maid I'm call - ing to you,

Bring On The Pepper

CHORUS *Slower*



Bring on the pep - per, We need a lot of pep - per, You've

The Little Red Lacquer Cage

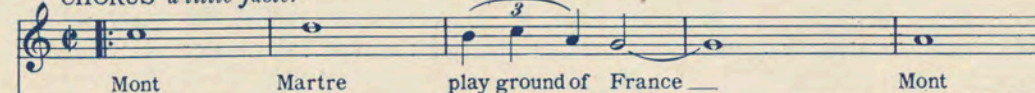
CHORUS *rall* *Slowly with tenderness*



I'd love to leave my lit - tle red lac - quer cage, And

Mont Martre

CHORUS *a little faster*



Mont Martre play ground of France Mont

Copyright MCMXXII by IRVING BERLIN Inc., 1607 Broadway, New York

International Copyright Secured

All Rights Reserved

COPIES ON SALE WHEREVER MUSIC IS SOLD