

1916

Down Where the Swanee River Flows

Charles McCarron

Charles S. Alberte

Albert von Tilzer

Follow this and additional works at: <https://digitalcommons.conncoll.edu/sheetmusic>

Recommended Citation

McCarron, Charles; Alberte, Charles S.; and von Tilzer, Albert, "Down Where the Swanee River Flows" (1916). *Historic Sheet Music Collection*. 287.

<https://digitalcommons.conncoll.edu/sheetmusic/287>

This Score is brought to you for free and open access by the Greer Music Library at Digital Commons @ Connecticut College. It has been accepted for inclusion in Historic Sheet Music Collection by an authorized administrator of Digital Commons @ Connecticut College. For more information, please contact bpancier@conncoll.edu.

The views expressed in this paper are solely those of the author.

DOWN WHERE THE SWANEE RIVER FLOWS

WORDS BY
CHAS. MC. CARRON AND
CHAS. S. ALBERTE
MUSIC BY
ALBERT VON TILZER

FEATURED WITH GREAT SUCCESS BY
AL JOLSON
IN THE WINTER GARDEN PRODUCTION
"ROBINSON CRUSOE, JR."

PRICE SIXTY CENTS

BROADWAY MUSIC CORPORATION
WILL VON TILZER PRESIDENT
145 WEST 45TH ST. NEW YORK

PUBLIC PERFORMANCE OF THIS WORK WITHOUT WRITTEN
LICENSE FROM THE COPYRIGHT PROPRIETOR IS PROHIBITED

DOWN WHERE THE SWANEE RIVER FLOWS

Words by
CHAS. McCARRON &
CHAS. S. ALBERTE

Music by
ALBERT VON TILZER

Moderato

Piano introduction in B-flat major, 2/4 time. The tempo is marked 'Moderato'. The music features a series of chords and moving lines in both hands, with a forte (f) dynamic. The right hand has a melodic line with some grace notes, while the left hand provides a harmonic accompaniment. The piece ends with a final chord marked 'sfz' and a fermata.

VOICE

Vocal melody and piano accompaniment for the first verse. The tempo is marked 'Vamp till ready'. The music is in B-flat major, 2/4 time. The vocal line is in the treble clef, and the piano accompaniment is in the bass clef. The lyrics are: 'I had a big surprise to-day While in a ten-cent pho-to-play, I real-ly I'd like to meet that mov-ie man, I want to shake him by the hand, I want to'.

Vocal melody and piano accompaniment for the second verse. The tempo is marked 'Vamp till ready'. The music is in B-flat major, 2/4 time. The vocal line is in the treble clef, and the piano accompaniment is in the bass clef. The lyrics are: 'saw my old home town way down in Dix-ie land It was simp-ly grand, Just to sit right there, and tell him that he wrote a grand scen-a-ri-o, He knew where to go, Plain as day up-on the'.

Vocal melody and piano accompaniment for the third verse. The tempo is marked 'Vamp till ready'. The music is in B-flat major, 2/4 time. The vocal line is in the treble clef, and the piano accompaniment is in the bass clef. The lyrics are: 'gaze screen, On the scenes of by-gone days, Made me yearn to re-turn to the land and peo-ple, Hez-a-ki-ah can be seen, Lit-tle Mose on his toes, look-ing at the came-ra,'.

Vocal melody and piano accompaniment for the fourth verse. The tempo is marked 'Vamp till ready'. The music is in B-flat major, 2/4 time. The vocal line is in the treble clef, and the piano accompaniment is in the bass clef. The lyrics are: 'I will love al-ways, I ev-en saw the same old school, Where I learned the gold-en rule. Near-ly spoiled the scene, I saw the cot-ton white as foam, I saw my home sweet home,'.

CHORUS

Down where the Swan-ee Riv-er flows— I want to be there— Down where the

cot-ton blos-som grows,— I want to see there,— My lit-tle sis-ter Flo', keep-in' time with Un-cle Joe,

Sing-ing a song and rag-gin' on his old ban-jo I see my dear old Moth-er Oh, Lord-y, Lord-y, Lord-y,

how I love her, When the birds are sing-ing in the wild-wood— My hap-py child-hood—

— Comes back once more— My heart is sore,— That's why I'm go-ing back where they care for me

Ev'-ry night they say a lit-tle prayer for me— Down where the Swan-ee Riv-er flows. —

1 2

8

p.f

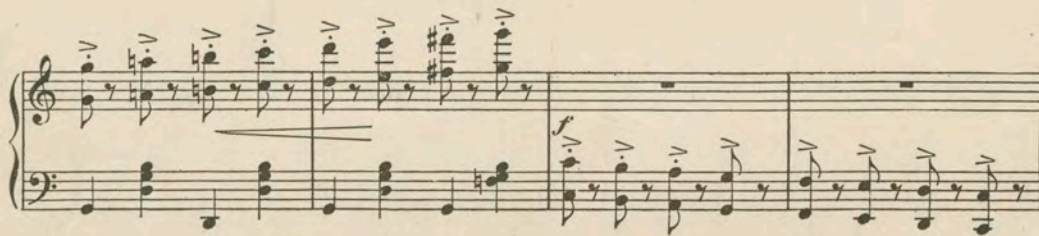
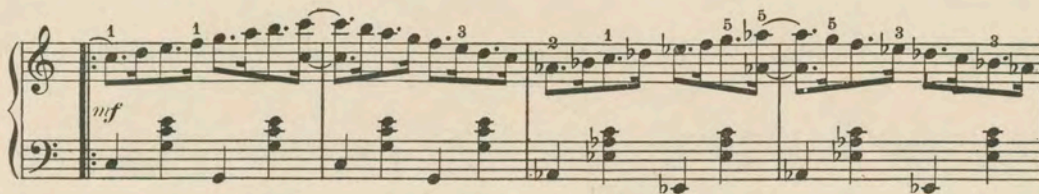
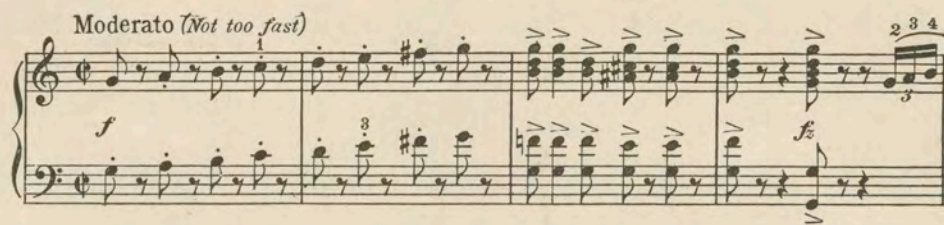
f

sfz

HAVE YOU A COPY OF THIS BIG INSTRUMENTAL HIT?

RAGGING THE SCALE

Ed B. CLAYPOOLE



Copyright MCMXV by Broadway Music Corporation, 145 W. 45th St., New York

NEVER SOLD BEFORE FOR LESS THAN 30 cents

NOW ON SALE AT POPULAR PRICE

