

Connecticut College

Digital Commons @ Connecticut College

Historic Sheet Music Collection

Greer Music Library

1832

I Turn to Thee in Time of Need

T. H. Bayly

Follow this and additional works at: <https://digitalcommons.conncoll.edu/sheetmusic>

Recommended Citation

Bayly, T. H., "I Turn to Thee in Time of Need" (1832). *Historic Sheet Music Collection*. 303.
<https://digitalcommons.conncoll.edu/sheetmusic/303>

This Score is brought to you for free and open access by the Greer Music Library at Digital Commons @ Connecticut College. It has been accepted for inclusion in Historic Sheet Music Collection by an authorized administrator of Digital Commons @ Connecticut College. For more information, please contact bpancier@conncoll.edu.

The views expressed in this paper are solely those of the author.

44

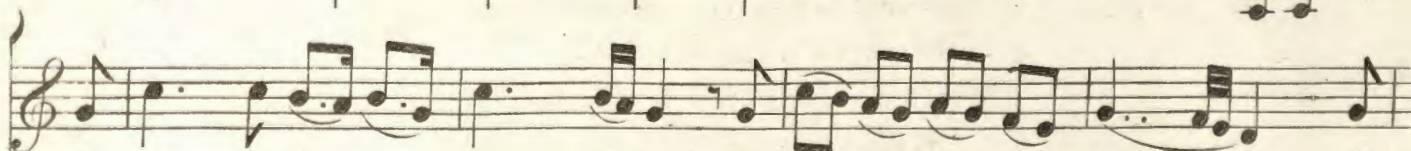
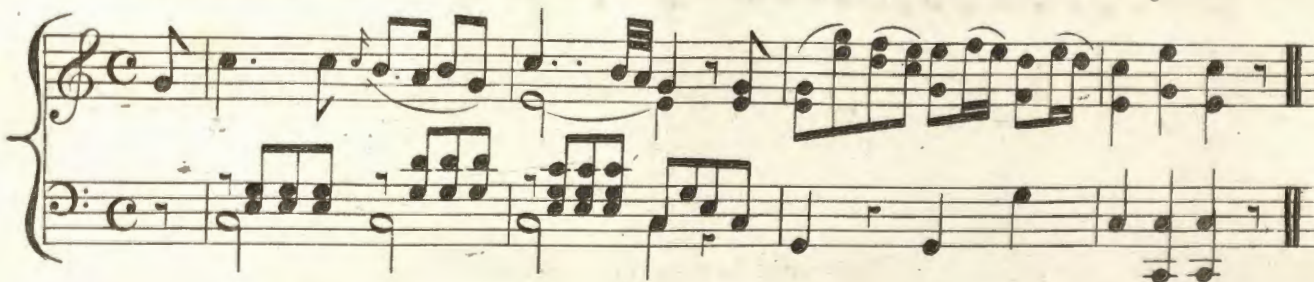
I TURN TO THEE IN TIME OF NEED

Written & Adapted to a favorite
Neapolitan Melody

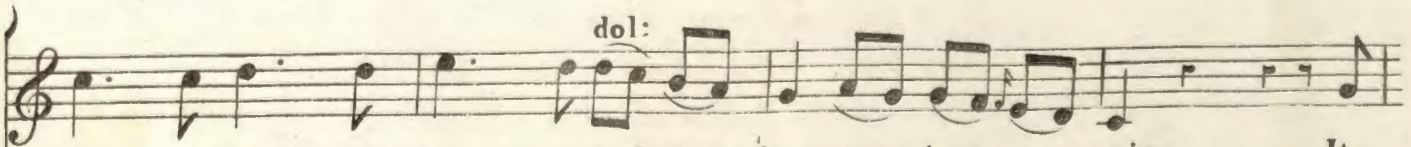
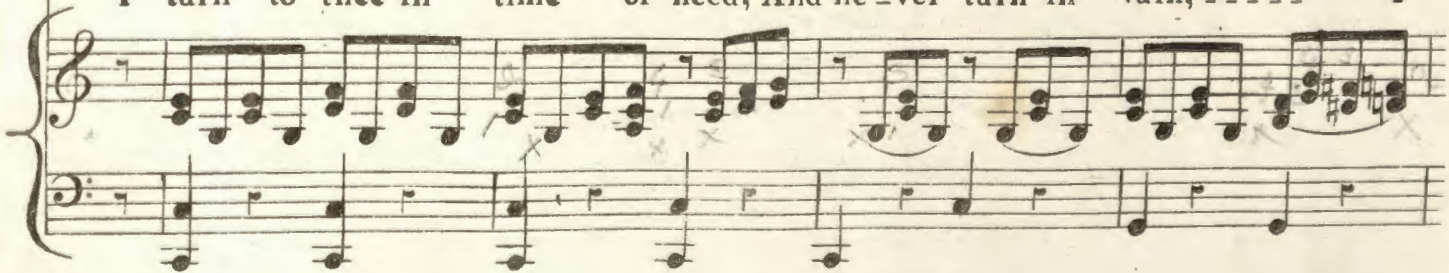
BY
T. H. BAYLY.

N. Y. O. R. K. Published at **ATWILL'S MUSIC SALOON** 201 Broadway.

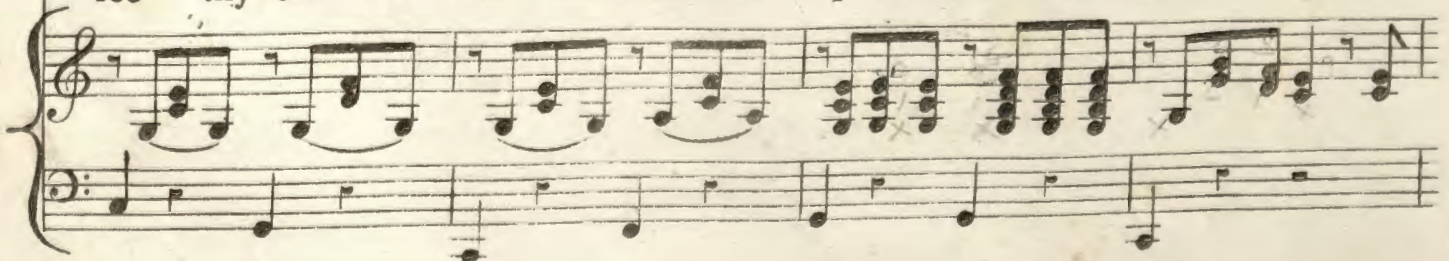
Allegretto.



I turn to thee in time of need, And ne-ver turn in vain; ----- I



see thy fond and fear - less smile And hope re - vives a - - gain. It



gives me strength to struggle on, What e'er the strife may be; --- And

if again my courage fails A gain I turn to thee.

2

Thy timid beauty charm'd me first;
 I breath'd a Lover's vow:
 But, littl thought to find the friend
 Whose strength sustains me now.
 I deem'd thee made for summer skies,
 But in the stormy sea,
 Deserted by all other friends
 Dear Love, I turn to thee.

3

Should e'er some keener sorrow throw
 A shadow o'er my mind;
 And should I, thoughtless, breathe to thee,
 One word that is unkind;
 Forgive it Love! thy smile will set
 My better feelings free;
 And with a look of boundless love,
 I still shall turn to thee.

