

Connecticut College

Digital Commons @ Connecticut College

Historic Sheet Music Collection

Greer Music Library

1840

Rose Of Allandale

Sydney Nelson

Follow this and additional works at: <https://digitalcommons.conncoll.edu/sheetmusic>

Recommended Citation

Nelson, Sydney, "Rose Of Allandale" (1840). *Historic Sheet Music Collection*. 327.
<https://digitalcommons.conncoll.edu/sheetmusic/327>

This Score is brought to you for free and open access by the Greer Music Library at Digital Commons @ Connecticut College. It has been accepted for inclusion in Historic Sheet Music Collection by an authorized administrator of Digital Commons @ Connecticut College. For more information, please contact bpancier@conncoll.edu.

The views expressed in this paper are solely those of the author.

THE ROSE OF ALLANDALE

Ballad

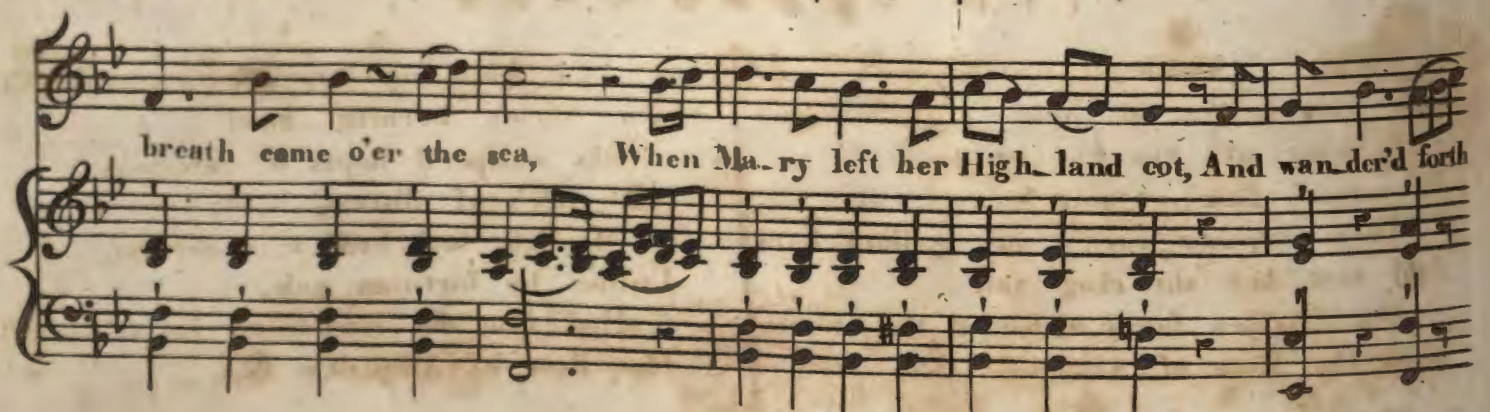
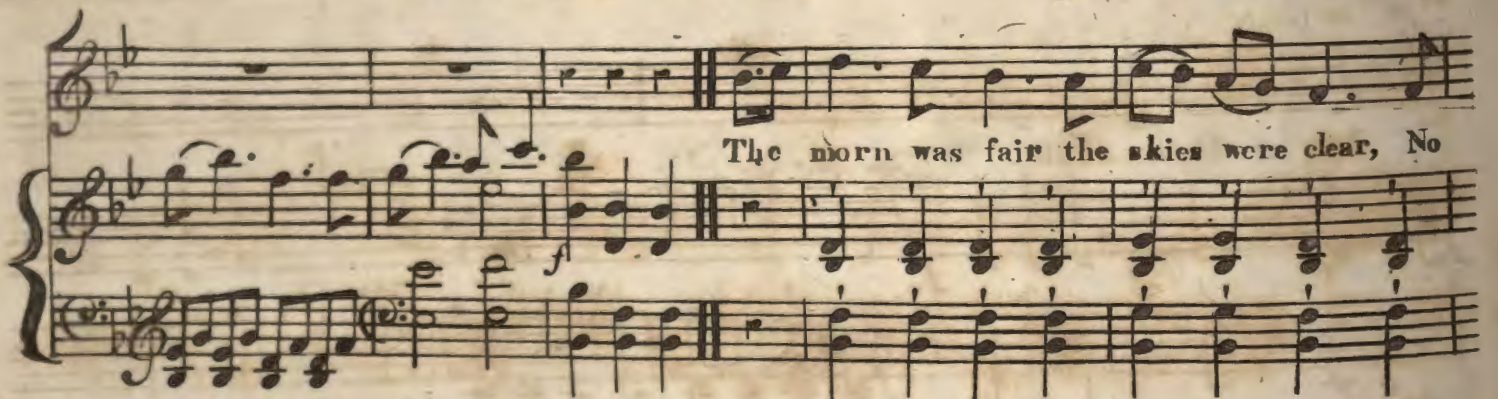
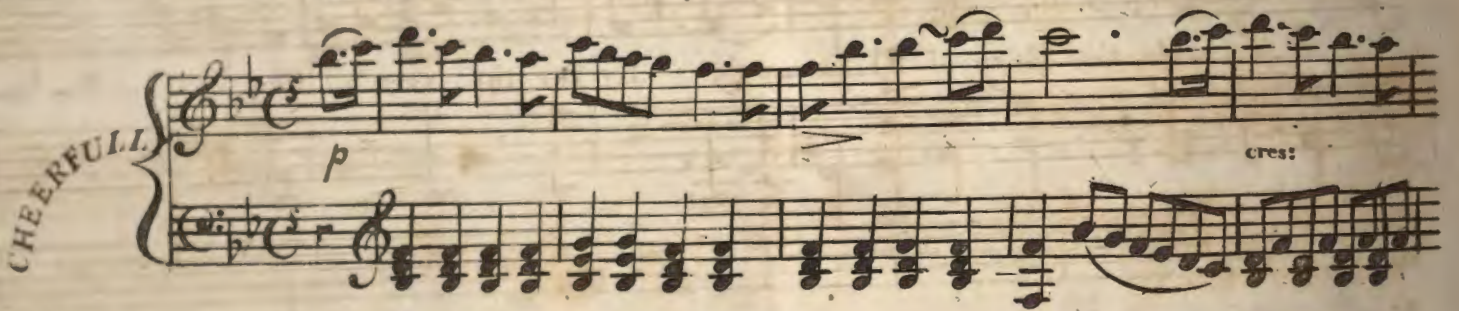
Written by

CHARLES JEFFERY

The Music By

S. NELSON

BOSTON Published by H. PRENTISS



2

with me: Tho' flow-ers deck'd the moun-tain's side, And fra-grance fill'd the vale,

By far the sweet-est flow-er there, Was the Rose of Al-lan-dale, was the Rose of

Al-lan-dale the Rose of Al-lan-dale By far the sweet-est flow-er there Was the

ad lib: Rose of Al-lan-dale.

f

2

Where'er I wander'd east or west
 Tho' Fate began to lour
 A solace still was she to me
 In sorrow's lonely hour
 When tempests lash'd our gallant bark
 And rent her shiv'ring sale
 One Maiden form withstood the storm
 'Twas the Rose of Allandale &c.

3

And when my fever'd lips were parch'd
 On Afric's burning sand
 She whisper'd hopes of happiness
 And tale's of distant land:
 My life had been a wilderness,
 Unless by fortunes gale,
 Had fate not link'd my lot to her's
 The Rose of Allandale &c.

[Faint, mostly illegible handwritten text and musical notation on aged paper. The text appears to be a list or index, possibly of musical compositions or names, with some entries starting with "M. H. O. B." and "M. H. O. B." followed by names like "M. H. O. B." and "M. H. O. B."]