

1914

I Want to Go Back to Michigan (Down on the Farm)

Irving Berlin

Follow this and additional works at: <https://digitalcommons.conncoll.edu/sheetmusic>

Recommended Citation

Berlin, Irving, "I Want to Go Back to Michigan (Down on the Farm)" (1914). *Historic Sheet Music Collection*. 1646.
<https://digitalcommons.conncoll.edu/sheetmusic/1646>

This Score is brought to you for free and open access by the Greer Music Library at Digital Commons @ Connecticut College. It has been accepted for inclusion in Historic Sheet Music Collection by an authorized administrator of Digital Commons @ Connecticut College. For more information, please contact bpancier@conncoll.edu.

The views expressed in this paper are solely those of the author.

I WANT TO GO BACK TO MICHIGAN

DOWN ON THE FARM

L. Mac Stephens



Words and
Music by
IRVING BERLIN

WATERSON-BERLIN-SNYDER & CO.
MUSIC PUBLISHERS
STRAND THEATRE BUILDING
BROADWAY AT 47TH ST. N.Y.

5

I WANT TO GO BACK TO MICHIGAN

(DOWN ON THE FARM)

Words and Music by
Irving Berlin

Moderato

The piano introduction is in 2/4 time, key of D major. It features a melody in the right hand and a bass line in the left hand. The melody starts with a quarter note D, followed by eighth notes E, F#, G, A, B, C, D. The bass line starts with a half note D, followed by quarter notes E, F#, G, A, B, C, D. The introduction ends with a final chord of D major.

till ready

I was born in Mich-i-gan,
You can keep your cab-ar-ets,

The first line of the song is in 2/4 time, key of D major. The vocal melody is in the right hand, and the piano accompaniment is in the left hand. The vocal melody starts with a quarter note D, followed by eighth notes E, F#, G, A, B, C, D. The piano accompaniment starts with a half note D, followed by quarter notes E, F#, G, A, B, C, D. The line ends with a final chord of D major.

And I wish and wish a - gain, That I was back _____ in the
Where they turn nights in - to days, I'd rath - er be _____ where they

The second line of the song is in 2/4 time, key of D major. The vocal melody is in the right hand, and the piano accompaniment is in the left hand. The vocal melody starts with a quarter note D, followed by eighth notes E, F#, G, A, B, C, D. The piano accompaniment starts with a half note D, followed by quarter notes E, F#, G, A, B, C, D. The line ends with a final chord of D major.

Copyright MCMXIV by Waterson, Berlin & Snyder Co.
Copyright Canada MCMXIV by Waterson, Berlin & Snyder Co.
International Copyright Secured.

town where I was born; go to bed at nine; There's a farm in I've been gone for

Mich-i-gan, sev-en weeks, And I'd like to fish a-gain, In the And I've lost my ros-y cheeks, That's the

riv-er that flows be-side the fields of wav-ing corn. A rea-son I'd rath-er have the coun-try life for mine. My

lone-some soul am I, Here's the rea-son why: thoughts are far a-way, That's just why I say:

CHORUS

I want to go back,— I want to go back,— I want to

p - f

go back to the farm, Far a - way from

harm,— With a milk pail on my arm;— I miss the

roost - er,— The one that use - ter Wake me up at four A. M. —

I think your great big ci - ty's ver - y pret - ty,

nev-er-the-less- I want to be there, I want to see there A certain

some one full of charm; That's why I wish a - gain, That

I was in Mich-i - gan, Down on the farm. I want to farm.—

1. 2.

D.S.

Mac Iuliano



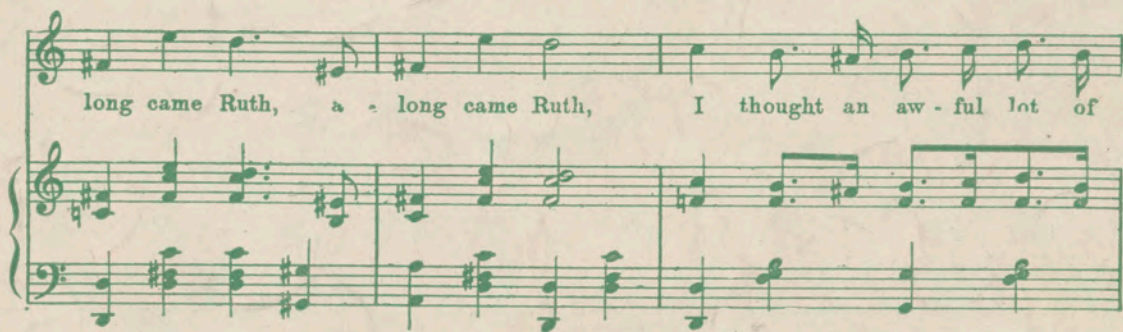
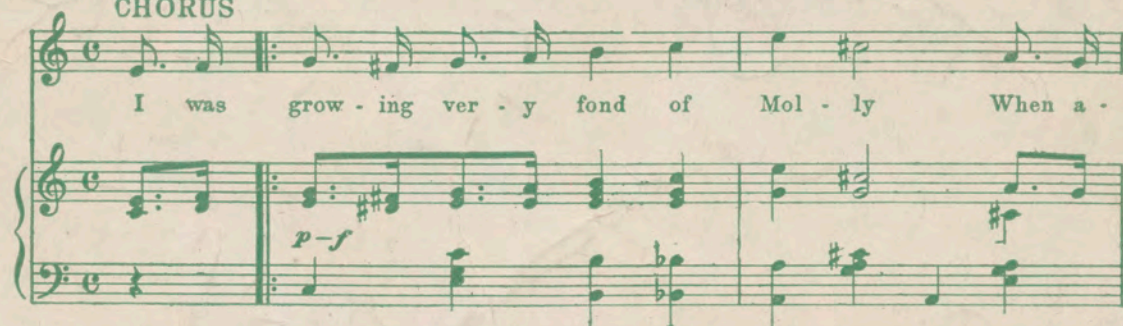
Irving Berlin

The Song Genius
of
The World
says:-

*This song surpasses all
my previous efforts.
I can safely say ~ this is
the best song I ever wrote.*

"Along Came Ruth"

CHORUS



Copyright 1914 by Waterson, Berlin & Snyder Co., Strand Theatre Bldg. Broadway at 47th St. N.Y.

International Copyright Secured
Copyright Canada 1914 by Waterson, Berlin & Snyder Co.